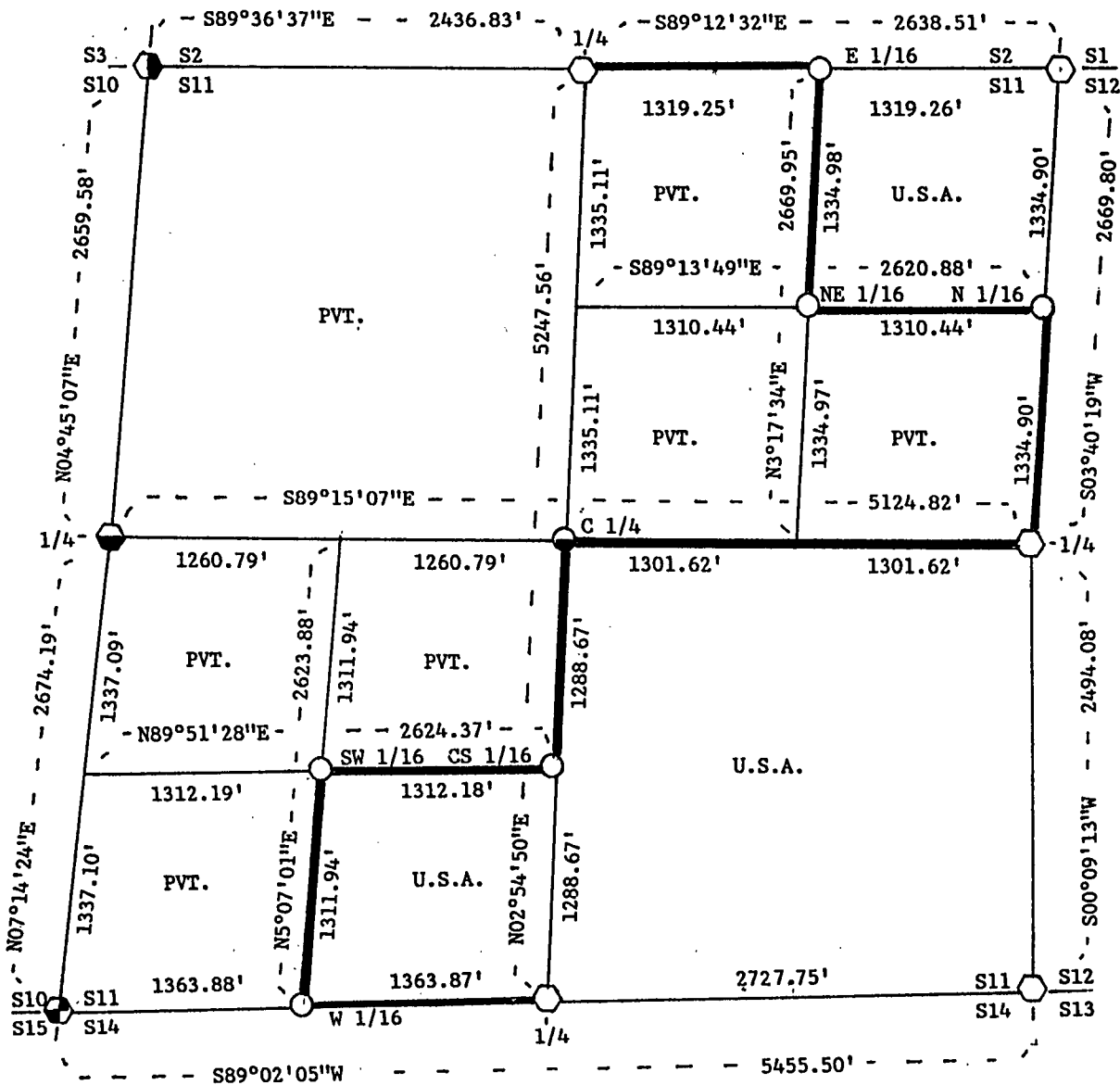
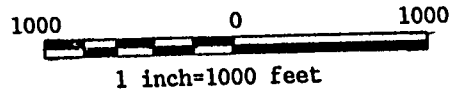


PLAT OF SURVEY FOR CERTIFIED LAND CORNER RESTORATION AND ESTABLISHMENT OF U.S. GOVERNMENT LAND

BEING THE CORNERS FOR THE NORTHEAST 1/4 OF THE NORTHEAST 1/4, THE SOUTHEAST 1/4 OF THE SOUTHWEST 1/4 AND THE SOUTHEAST 1/4. SECTION 11, T37N, R12E, FOURTH PRINCIPAL MERIDIAN FOREST COUNTY, STATE OF WISCONSIN



SCALE IN FEET



LEGEND

- Boundary line marked to standard.
- 1" diameter aluminum pipe monument. 36 inches long with an aluminum cap stamped to identify the corner.
- 1" diameter iron pipe at the corner with a 1" dia. witness aluminum pipe monument, 36 inches long with an aluminum cap stamped to identify the location of the corner.
- 2 1/2" dia. aluminum pipe monument, 36 inches long with an aluminum cap stamped to identify the corner.
- ⬢ County Monument has missing cap at the corner. Set a 2 1/2" dia. witness aluminum pipe monument, 36 inches long with an aluminum cap stamped to identify the location of the corner.
- ⬢ Railroad spike at the corner with a 2 1/2" dia. witness aluminum pipe monument, 36 inches long with an aluminum cap stamped to identify the location of the corner.
- ⬢ Iron pipe at the corner with Reference County Monument stamped to identify the location of the corner.

NOTE: Bearings are referenced to solar observations.

Stock No. 26273

Sheet 2 of 5

## SURVEY NOTES

This survey was made by John C. Schulke, a Registered Land Surveyor in the State of Wisconsin, for the U.S. Department of Agriculture, Forest Service. The purpose of the survey was for recovery, establishing, marking and perpetuating the corners and boundary lines of the U.S. Government Land on the perimeter and within Section 11, Township 37 North, Range 12 East, Fourth Principal Meridian, Forest County, Wisconsin.

The original Government survey of the township boundary was done by Alfred Millard, U.S. Deputy Surveyor, in May and June of 1858. The original Government subdivision survey of this township was done by William E. Daugherty in 1859.

The bearings between corner positions are true bearings as determined by reference to solar observations. The accuracy of this survey exceeds the State requirement for closure of 1 in 3,000. Corners recovered or established by this survey are marked as described in the map legend. Each monumented corner is referenced to blazed, scribed, painted and tagged bearing trees. Tie bearings are magnetic, and not corrected for declination.

## CORNERS RECOVERED AND RESTORED

1. Quarter Corner Between Sections 2 and 11.

Set a monument in the position described by local land owners as the location of the original corner. Fence line running North and South. Fence corner bears North a distance of 2.2 ft from the monument.

## Corner references:

Sugar Maple	5"	N87°E	7.07 feet
Sugar Maple	5"	S09°E	32.22 feet
Birch	10"	N36°W	22.96 feet
Balsam	7"	S39°W	35.90 feet
Steel sign post		South	1.0 feet

2. Section Corner Common To Sections 1, 2, 11 and 12.

Corner position restored by proportionate measurement. Monument placed in a mound of stones.

## Corner references:

Sugar Maple	8"	N48°E	12.43 feet
Hemlock	8"	S55°E	25.49 feet
Sugar Maple	4"	S40°W	30.48 feet
Sugar Maple	6"	S89°W	22.85 feet
Steel sign post		South	1.2 feet

3. Quarter Corner Between Sections 11 and 12.

Set a monument in the North shoulder of road on West side of a Spruce plantation described by the local land owners as the location of the original corner. The monument is 0.9 feet below the surface of the ground. Center of Forest Service (#2391) road runs East and West bears South a distance of 5.51 feet.

## Corner references:

Spruce	15"	N17°E	32.72 feet
Spruce	11"	S31°E	32.57 feet
Twin Sugar Maple	12"	S44°W	42.43 feet
Sugar Maple	13"	N50°W	43.04 feet
Steel sign post		North	14.4 feet

Stock No. 26273

Sheet 3 of 5

4. Section Corner Common To Sections 11, 12, 13 and 14.  
Corner position restored by proportionate measurement. Monument placed in a mound of stones.
- Corner references:
- |                  |    |       |            |
|------------------|----|-------|------------|
| Sugar Maple      | 7" | N04°E | 46.01 feet |
| Twin Sugar Maple | 5" | N34°E | 21.28 feet |
| Sugar Maple      | 4" | S33°E | 35.00 feet |
| Sugar Maple      | 6" | S84°W | 19.66 feet |
| Steel sign post  |    | South | 0.8 feet   |
5. Quarter Corner Between Sections 11 and 14.  
Corner position restored by proportionate measurement. Monument 0.3 ft. below the surface of the ground on the East edge of a logging road. The road runs N15°W.
- Corner references:
- |                 |    |       |            |
|-----------------|----|-------|------------|
| Black Ash       | 5" | N50°W | 53.77 feet |
| Aspen           | 6" | N40°E | 16.99 feet |
| Aspen           | 4" | S55°E | 13.69 feet |
| Sugar Maple     | 3" | S30°W | 45.69 feet |
| Steel sign psot |    | East  | 1.2 feet   |
6. Section Corner Common To Sections 10, 11, 14 and 15.  
Corner monument recovered in place and as described on the Certified Land Corner Restoration form filed in the Forest County Register of Deed's Office, Document #112378, in 1977 by William Cochrane (RLS-1107).
7. Quarter Corner Between Sections 10 and 11.  
Recovered a County Monument, 0.2 ft. below the surface of a gravel road (F.S. 2174), with a broken off cap at the corner. Set a witness monument. Steel sign post bears South a distance of 0.5 ft. from the witness monument.
- Recovered corner references:
- |             |    |       |            |
|-------------|----|-------|------------|
| Sugar Maple | 7" | N10°W | 30.74 feet |
| Sugar Maple | 8" | S38°E | 54.38 feet |
| Iron pipe   | 2" | N02°E | 33.0 feet  |
- New corner references:
- |                  |        |         |            |
|------------------|--------|---------|------------|
| Twin Black Ash   | 5"     | N17°E   | 42.91 feet |
| Witness Monument | 2 1/2" | S7°14'W | 33.00 feet |
8. Section Corner Common To Sections 2, 3, 10 and 11.  
Found spike in the road in the location described by adjacent land owners. The position has long been accepted by property owners as the corner. Steel sign post bears South a distance of 0.9 ft. from the witness monument.
- Corner References:
- |                  |        |         |            |
|------------------|--------|---------|------------|
| Sugar Maple      | 14"    | N62°W   | 36.54 feet |
| Twin Sugar Maple | 10"    | N78°E   | 54.48 feet |
| Iron pipe        | 1"     | N02°W   | 21.20 feet |
| Witness monument | 2 1/2" | S4°45'W | 33.0 feet  |

## CORNERS ESTABLISHED

1. East Sixteenth Corner Between Sections 2 and 11.  
Corner position is established at the midpoint and on line between the North Quarter corner and the Northeast Section corner of Section 11.
- Corner references:
- |                  |    |       |            |
|------------------|----|-------|------------|
| Tamarack         | 7" | N66°E | 19.15 feet |
| Twin Sugar Maple | 5" | N84°W | 19.42 feet |
| Steel sign post  |    | South | 0.9 feet   |

Stock No. 26273

Sheet 4 of 5

2. Northeast Sixteenth Corner Of Section 11.

Corner position is established at the intersection of the straight lines between opposing sixteenth corners on the perimeter of the Northeast Quarter of Section 11.

## Corner references:

Sugar Maple	6"	S73°E	21.25 feet
Black Ash	7"	S33°W	8.26 feet
Steel sign post		North	0.4 feet

3. North Sixteenth Corner Between Sections 11 and 12.

Corner position is established at the midpoint and on line between the East Quarter corner and the Northeast Section corner of Section 11. Monument placed in a mound of stones.

## Corner references:

Sugar Maple	14"	N41°W	47.56 feet
Black Ash	7"	S85°E	9.93 feet
Steel sign post		Northeast	1.0 feet

4. Center Quarter Corner Of Section 11.

Corner position is established at the intersection of a straight lines between opposing Quarter corners of the perimeter of Section 11. The steel sign post bears South a distance of 0.5 feet from the witness monument.

## Corner references:

Red Maple	9"	S41°E	38.87 feet
Red Maple	6"	N14°W	38.75 feet
Witness monument	1"	S2°55'W	33.00 feet

5. Center South Sixteenth Corner Of Section 11.

Corner position is established at the midpoint and on line between the South Quarter corner and the Center Quarter corner of Section 11.

## Corner references:

Sugar Maple	7"	N30°W	16.87 feet
Sugar Maple	5"	S76°E	30.87 feet
Steel sign post		Southeast	0.7 feet

6. Southwest Sixteenth Corner Of Section 11.

Corner position is established at the intersection of the straight lines between opposing sixteenth corners on the perimeter of the Southwest Quarter of Section 11. Monument placed in a mound of stones.

## Corner references;

Red Maple	8"	N05°W	13.65 feet
Red Maple	5"	S36°E	11.51 feet
Steel sign post		Southeast	1.2 feet

7. West Sixteenth Corner Between Sections 11 and 14.

Corner position is established at the midpoint and on line between the South Quarter corner and the Southwest Section corner of Section 11. The center line of a logging road bears South a distance of 41 feet from the monument. Road runs due East and West.

## Corner references:

Black Ash	7"	S80°W	29.84 feet
Clump of Red Maple	11"	N52°E	37.92 feet
Steel sign post		North	0.9 feet

Stock No. 26273

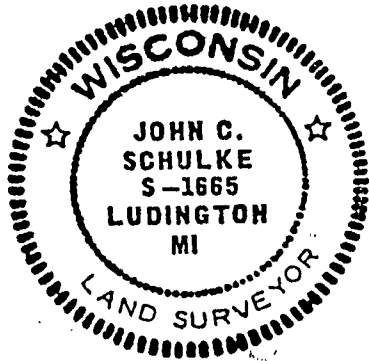
Sheet 5 of 5

SURVEYOR'S AFFIDAVIT

State of Wisconsin)  
County of Forest )ss

I, John C. Schulke, a Cadastral Surveyor, and a Registered land Surveyor in the State of Wisconsin, hereby certify that I have surveyed and subdivided Section 11, Township 37 North, Range 12 East, Fourth Principal Meridian, State of Wisconsin.

The plat map and survey notes herewith are a correct representation of the land surveyed and subdivided. I have surveyed and subdivided said section in accordance with the rules for the survey of the public lands and with the statutes of the State of Wisconsin.



John C. Schulke  
4604 So. Pere Marquette Rd.  
Ludington, MI 49431  
R.L.S. State of Wisconsin  
Date of Survey 1989  
Certificate S-1665

*John C. Schulke*  
Nov 3rd, 1989

Survey requested by; *Dale Staege* 1989  
District Ranger Date

