

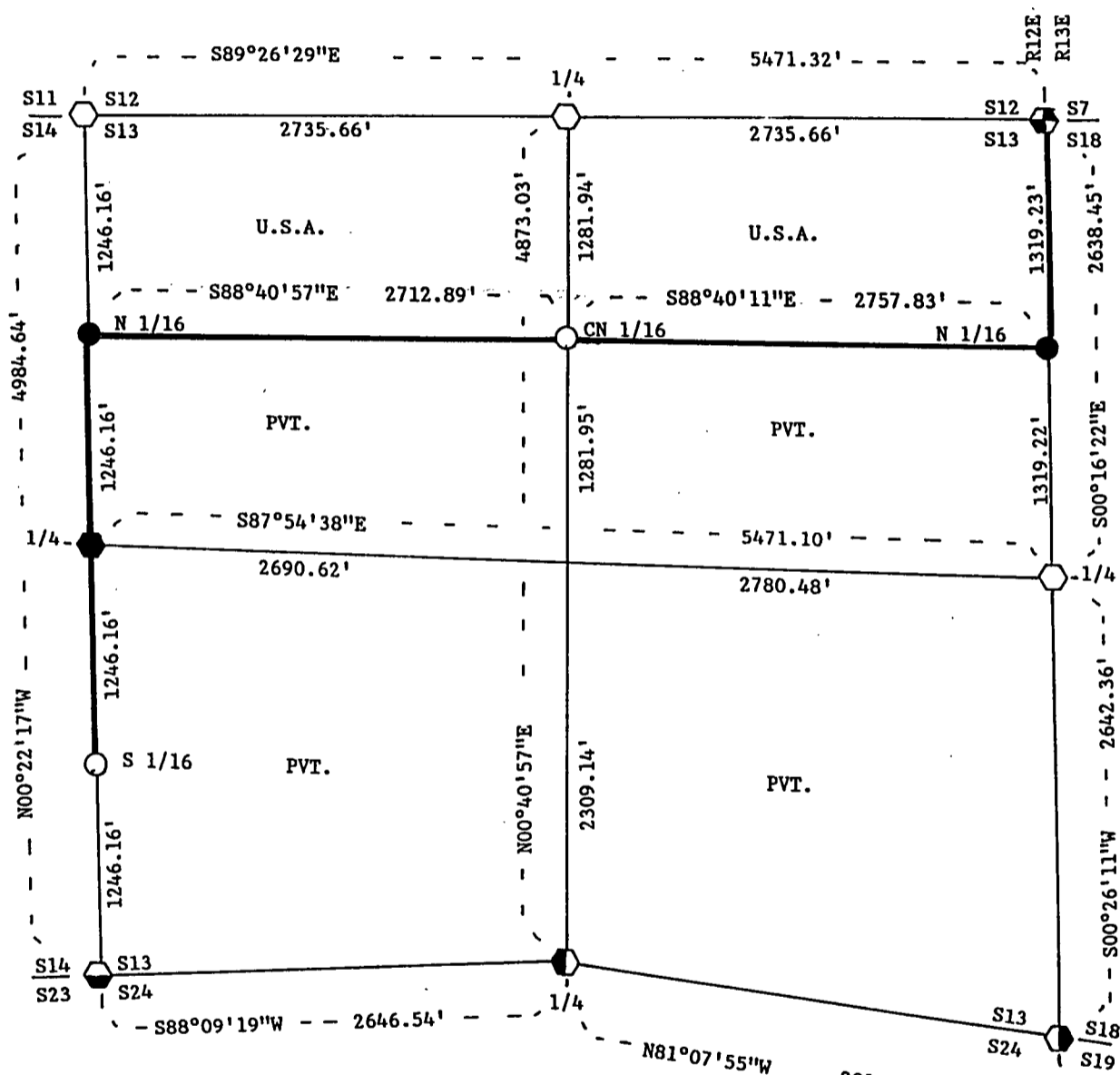
Stock No. 26273

FOREST CO SURVEYOR  
FILE # 371213-19891103  
DATE \_\_\_\_\_ BY \_\_\_\_\_

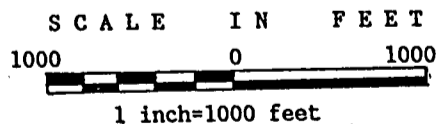
Sheet 1 of 4

PLAT OF SURVEY FOR CERTIFIED LAND CORNER RESTORATION AND ESTABLISHMENT OF U.S. GOVERNMENT LAND

BEING THE CORNERS FOR THE NORTH 1/2 OF THE NORTHWEST 1/4 AND THE NORTH 1/2 OF THE NORTHEAST 1/4. SECTION 13, T37N, R12E, FOURTH PRINCIPAL MERIDIAN FOREST COUNTY, STATE OF WISCONSIN



LEGEND



- Boundary line marked to standard.
- 1" dia. aluminum pipe monument, 36 inches long with an aluminum cap stamped to identify the corner.
- 1" dia. aluminum pipe monument, 60 inches long with an aluminum cap stamped to identify the corner.
- ⬡ 2 1/2" dia. aluminum pipe monument, 36 inches long with an aluminum cap stamped to identify the corner.
- ⬢ 2 1/2" dia. aluminum pipe monument, 60 inches long with an aluminum cap stamped to identify the corner.
- ⬤ 2" dia. X 3 ft. iron post with the brass cap stamped to identify the corner.
- ⬥ Railroad spike the the corner with Reference County monument stamped to identify the location of the corner.
- ⬦ Railroad spike at the corner with 2 1/2" dia. X 60" witness aluminum monument stamped to identify the location of the corner.
- ⬧ 2 1/2" dia. aluminum pipe monument, 36 inches long with an aluminum cap stamped to identify the corner. Monument 0.3 ft. below the surface of the road.

NOTE: Bearings are referenced to solar observations.

Stock No. 26273

Sheet 2 of 4

## SURVEY NOTES

This survey was made by John C. Schulke, a Registered Land Surveyor in the State of Wisconsin, for the U.S. Department of Agriculture, Forest Service. The purpose of the survey was for recovery, establishing, marking and perpetuating the corners and boundary lines of the U.S. Government Land on the perimeter and within Section 13, Township 37 North, Range 12 East, Fourth Principal Meridian, Forest County, Wisconsin.

The original Government survey of the township boundary was done by Alfred Millard, U.S. Deputy Surveyor, in May and June of 1858. The original Government subdivision survey of this township was done by William E. Daugherty in 1859. A Dependent Resurvey was done by Wesson Cook and approved by the General Land Office in 1937 for the North township line and the North two miles of the East township line.

The bearings between corner positions are true bearings as determined by reference to solar observations. The accuracy of this survey exceeds the State requirement for closure of 1 in 3,000. Corners recovered or established by this survey are marked as described in the map legend. Each monumented corner is referenced to blazed, scribed, painted and tagged bearing trees. Tie bearings are magnetic, and not corrected for declination.

## CORNERS RECOVERED AND RESTORED

1. Section Corner Common To Sections 13, 14, 23 and 24.  
Corner monument recovered in place and as described on the Certified Land Corner Restoration form filed in the Forest County Register of Deed's Office, Document #112174, in 1977 by William Cochrane (RLS-1107).
2. Quarter Corner Between Sections 13 and 14.  
Corner position restored by proportionate measurement.  
  
Corner references:
 

Cedar	10"	West	36.71 feet
Black Ash	8"	N84°E	13.05 feet
Cedar	12"	S03°E	46.17 feet
Black Ash	7"	S15°W	19.43 feet
Steel sign post		North	1.2 feet
3. Section Corner Common To Sections 11, 12, 13 and 14.  
Corner position restored by proportionate measurement. Monument placed in a mound of stones.  
  
Corner references:
 

Sugar Maple	7"	N04°E	46.01 feet
Twin Sugar Maple	5"	N34°E	21.28 feet
Sugar Maple	4"	S33°E	35.00 feet
Sugar Maple	6"	S84°W	19.66 feet
Steel sign post		South	0.8 feet
4. Quarter Corner Between Sections 12 and 13.  
Corner position restored by proportionate measurement. Monument placed in a mound of stones.  
  
Corner references:
 

Balsam	7"	N75°W	28.08 feet
Black Ash	8"	N17°E	37.04 feet
Black Ash	10"	N70°E	53.16 feet
Black Ash	8"	S17°E	18.24 feet
Steel sign post		Southeast	0.3 feet

Stock No. 26273

Sheet 3 of 4

5. Section Corner Common To Sections 7, 12, 13 and 18.  
Corner monument recovered in place.

## Recovered corner references:

Tamarack	6"	S39°W	22.29 feet
Steel sign post		West	1.0 feet

## New corner references:

Tamarack	3"	S07°W	32.55 feet
Tamarack	4"	West	40.84 feet
Tamarack	4"	N34°E	21.19 feet
Tamarack	5"	S80°E	30.16 feet

6. Quarter Corner Between Sections 13 and 18.

Recovered 1 1/4" dia. iron pipe. Replaced the iron pipe with an aluminum monument. Monument placed in a mound of stones. Fence corner post bears West a distance of 0.8 feet from the monument. Fence lines runs West and North.

## Corner references:

Clump of Basswood	16"	N33°E	37.74 feet
Aspen	6"	S68°E	21.77 feet
Sugar Maple	6"	S16°E	94.67 feet
Steel sign post		Northeast	0.7 feet

7. Section Corner Common To Sections 13, 18, 19 and 24.  
Corner monument recovered in place.

## Recovered corner references:

Elm	9"	N36°E	28.21 feet
Elm	11"	N54°W	39.82 feet
Power pole		S58°W	46.46 feet

8. Quarter Corner Between Sections 13 and 24.

Corner restored by obliterated evidence. Set a steel sign post 0.8 feet North from the witness monument.

## Corner references:

Cedar	8"	N09°W	44.20 feet
Black Ash	7"	N30°E	63.43 feet
Power pole #3712-24W14"		S31°W	36.32 feet
Witness monument 2 1/2"		N0°41"E	33.00 feet
Stream		West	82.00 feet

## CORNERS ESTABLISHED

1. North Sixteenth Corner Between Sections 13 and 14.

Corner position is established at the midpoint and on line between the West Quarter corner and the Northwest Section corner of Section 13.

## Corner references:

Spruce	7"	S02°E	84.90 feet
Red Maple	6"	S79°W	47.10 feet
Steel sign post		North	0.7 feet

2. Center North Sixteenth Corner Of Section 13.

Corner position is established at the midpoint and on line between the North Quarter corner and the Center Quarter corner of Section 13.

## Corner references:

Sugar Maple	7"	N54°W	28.32 feet
Sugar Maple	10"	S12°E	21.67 feet
Steel sign post		Northwest	0.7 feet



Stock No. 26273

Sheet 4 of 4

3. North Sixteenth Corner Between Sections 13 and 18.  
 Corner position is established at the midpoint and on line between the East Quarter corner and the Northeast Section corner of Section 13. Recovered 2" dia. iron pipe bears S76°W a distance of 2.6 feet from the monument.

## Corner references:

Tamarack	6"	S12°E	30.52 feet
Tamarack	9"	S59°W	54.03 feet
Steel sign post		Northwest	1.1 feet

4. South Sixteenth Corner Between Sections 13 and 14.  
 Corner position is established at the midpoint and on line between the West Quarter corner and the Southwest Section corner of Section 13.

## Corner references:

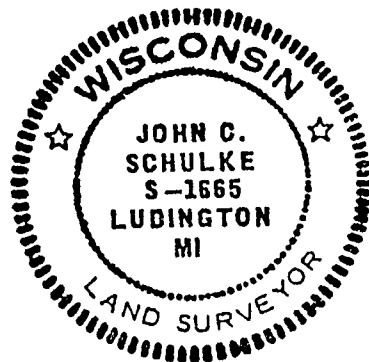
Aspen	10"	S35°W	21.37 feet
Aspen	7"	N88°W	40.05 feet
Steel sign post		Northwest	0.8 feet

## SURVEYOR'S AFFIDAVIT

State of Wisconsin)  
 County of Forest )<sup>ss</sup>

I, John C. Schulke, a Cadastral Surveyor, and a Registered Land Surveyor in the State of Wisconsin, hereby certify that I have surveyed and subdivided Section 13, Township 37 North, Range 12 East, Fourth Principal Meridian, State of Wisconsin.

The plat map and survey notes herewith are a correct representation of the land surveyed and subdivided. I have surveyed and subdivided said section in accordance with the rules for the survey of the public lands and with the statutes of the State of Wisconsin.



John C. Schulke  
 4604 So. Pere Marquette Rd.  
 Ludington, MI 49431  
 R.L.S. State of Wisconsin  
 Date of Survey 1989  
 Certificate S-1665

*John C. Schulke*

Nov. 3rd, 1989

Survey requested by; Dale Staege 1989

District Ranger

Date

