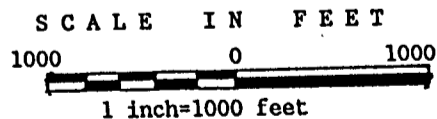
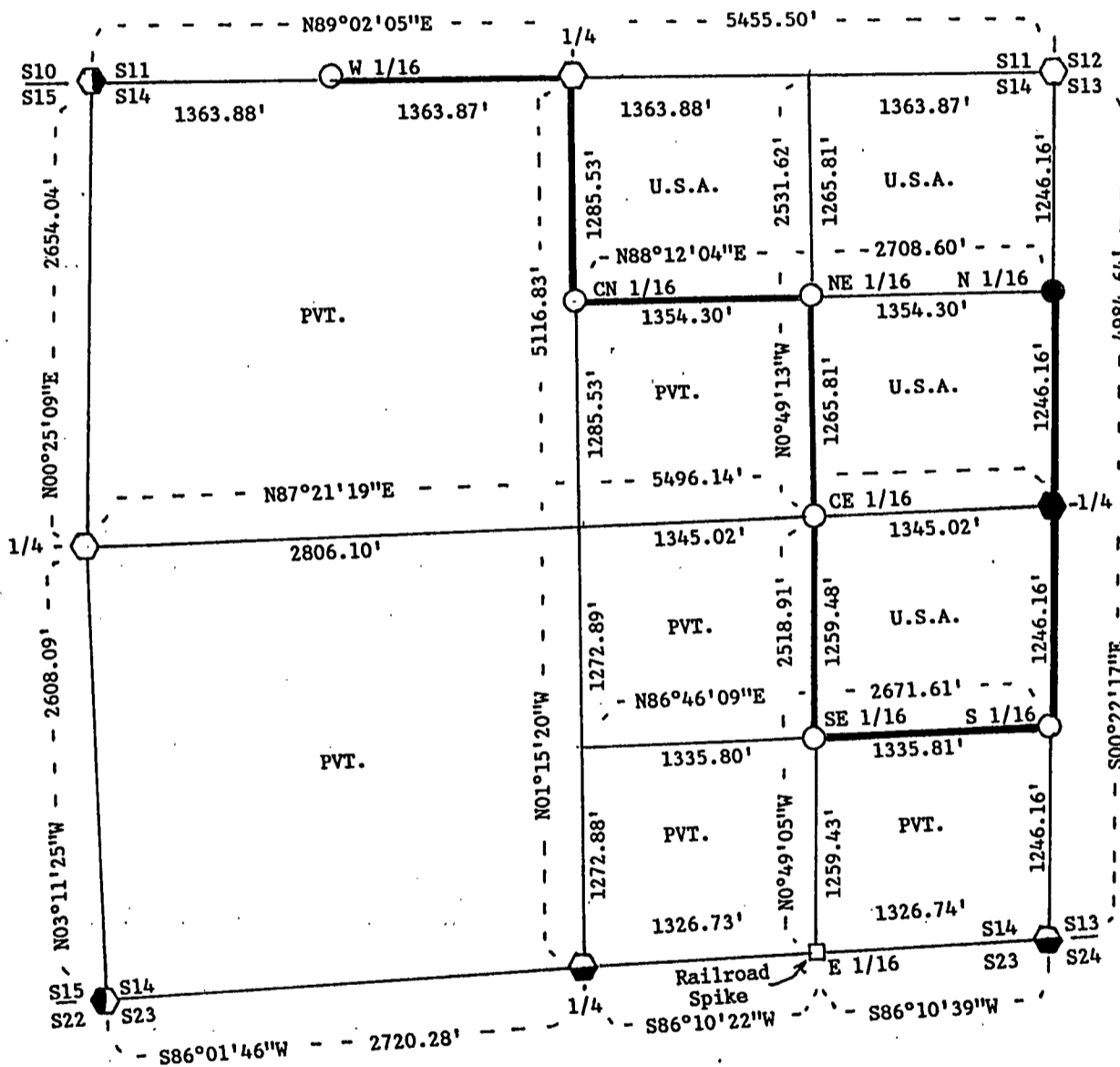


PLAT OF SURVEY FOR CERTIFIED LAND CORNER RESTORATION AND ESTABLISHMENT OF U.S. GOVERNMENT LAND

BEING THE CORNERS FOR THE NORTH 1/2 OF THE NORTHEAST 1/4, THE SOUTHEAST 1/4 OF THE NORTHEAST 1/4 AND THE NORTHEAST 1/4 OF THE SOUTHEAST 1/4. SECTION 14, T37N, R12E, FOURTH PRINCIPAL MERIDIAN FOREST COUNTY, STATE OF WISCONSIN



LEGEND

- Boundary line marked to standard.
- 1" diameter aluminum pipe monument. 36 inches long with an aluminum cap stamped to identify the corner.
- 1" diameter aluminum pipe monument, 60 inches long with an aluminum cap stamped to identify the corner.
- ◻ 2 1/2" dia. aluminum pipe monument, 36 inches long with an aluminum cap stamped to identify the corner.
- ◼ 2 1/2" dia. aluminum pipe monument, 60 inches long with an aluminum cap stamped to identify the corner.
- ⊙ Iron pin at the corner with Reference County Monument stamped to identify the location of the corner.
- ⊠ Railroad spike at the corner with Reference County Monument stamped to identify the location of the corner.
- ⊞ Iron pipe at the corner with Reference County Monument stamped to identify the location of the corner.

NOTE: Bearings are referenced to solar observations.

Stock No. 26273

Sheet 2 of 4

SURVEY NOTES

This survey was made by John C. Schulke, a Registered Land Surveyor in the State of Wisconsin, for the U.S. Department of Agriculture, Forest Service. The purpose of the survey was for recovery, establishing, marking and perpetuating the corners and boundary lines of the U.S. Government Land on the perimeter and within Section 14, Township 37 North, Range 12 East, Fourth Principal Meridian, Forest County, Wisconsin.

The original Government survey of the township boundary was done by Alfred Millard, U.S. Deputy Surveyor, in May and June of 1858. The original Government subdivision survey of this township was done by William E. Daugherty in 1859.

The bearings between corner positions are true bearings as determined by reference to solar observations. The accuracy of this survey exceeds the State requirement for closure of 1 in 3,000. Corners recovered or established by this survey are marked as described in the map legend. Each monumented corner is referenced to blazed, scribed, painted and tagged bearing trees. Tie bearings are magnetic, and not corrected for declination.

CORNERS RECOVERED AND RESTORED

1. Section Corner Common To Sections 10, 11, 14 and 15.
Corner monument recovered in place and as described on the Certified Land Corner Restoration form filed in the Forest County Register of Deed's Office, Document #112378, in 1977 by William Cochrane (RLS-1107).

2. Quarter Corner Between Sections 11 and 14.
Corner position restored by proportionate measurement. Monument 0.3 ft. below the surface of the ground on the East edge of a logging road. The road runs N15°W.

Corner references:

Black Ash	5"	N50°W	53.77 feet
Aspen	6"	N40°E	16.99 feet
Aspen	4"	S55°E	13.69 feet
Sugar Maple	3"	S30°W	45.69 feet
Steel sign post		East	1.2 feet

3. Section Corner Common To Sections 11, 12, 13 and 14.
Corner position restored by proportionate measurement. Monument placed in a mound of stones.

Corner references:

Sugar Maple	7"	N04°E	46.01 feet
Twin Sugar Maple	5"	N34°E	21.28 feet
Sugar Maple	4"	S33°E	35.00 feet
Sugar Maple	6"	S84°W	19.66 feet
Steel sign post		South	0.8 feet

4. Quarter Corner Between Sections 13 and 14.
Corner position restored by proportionate measurement.

Corner references:

Cedar	10"	West	36.71 feet
Black Ash	8"	N84°E	13.05 feet
Cedar	12"	S03°E	46.17 feet
Black Ash	7"	S15°W	19.43 feet
Steel sign post		North	1.2 feet

Stock No. 26273

Sheet 3 of 4

5. Section Corner Common To Sections 13, 14, 23 and 24.
Corner monument recovered in place and as described on the Certified Land Corner Restoration form filed in the Forest County Register of Deed's Office, Document #112174, in 1977 by William Cochrane (RLS-1107).
6. Quarter Corner Between Sections 14 and 23.
Corner monument recovered in place and as described on the Certified Land Corner Restoration form filed in the Forest County Register of Deed's Office, Document #112187, in 1977 by William Cochrane (RLS-1107).
7. Section Corner Common To Sections 14, 15, 22 and 23.
Corner monument recovered in place and as described on the Certified Land Corner Restoration form filed in the Forest County Register of Deed's Office, Document #112173, in 1977 by William Cochrane (RLS-1107).
8. Quarter Corner Between Sections 14 and 15.
Replaced 1 1/4" iron pipe with an aluminum monument. Monument placed in a mound of stones.

Corner references:

Red Maple	10"	S30°W	18.84 feet
Red Maple	10"	N78°W	42.95 feet
Black Ash	10"	N27°E	12.80 feet
Twin Red Maple	12"	S82°E	37.92 feet
Steel sign post		North	0.8 feet

9. East Sixteenth Corner Between Sections 14 and 23.
Corner monument recovered in place and as described on the Certified Survey Plat sheets filed in the Forest County Register of Deed's Office, Document #112256, in 1977 by William Cochrane (RLS-1107).

CORNERS ESTABLISHED

1. Center North Sixteenth Corner of Section 14.
Corner position is established at the midpoint and on line between the North Quarter corner and the Center Quarter corner of Section 14.
- Corner references:
- | | | | |
|--------------------|----|-----------|------------|
| Red Maple | 9" | N02°E | 54.65 feet |
| Clump of Red Maple | 5" | S31°E | 24.58 feet |
| Steel sign post | | Northeast | 0.9 feet |
2. Northeast Sixteenth Corner of Section 14.
Corner position is established at the intersection of the straight lines between opposing Sixteenth corners on the perimeter of the Northeast Quarter of Section 14.
- Corner references:
- | | | | |
|------------------|-----|-----------|------------|
| Twin Sugar Maple | 10" | N86°E | 23.86 feet |
| Twin Sugar Maple | 6" | S11°W | 28.40 feet |
| Steel sign post | | Northeast | 1.0 feet |
3. North Sixteenth Corner Between Sections 13 and 14.
Corner position is established at the midpoint and on line between the East Quarter corner and the Northeast Section corner of Section 14.
- Corner references:
- | | | | |
|-----------------|----|-------|------------|
| Spruce | 7" | S02°E | 84.90 feet |
| Red Maple | 6" | S79°W | 47.10 feet |
| Steel sign post | | North | 0.7 feet |

Stock No. 26273

Sheet 4 of 4

4. Center East Sixteenth Corner of Section 14.

Corner position is established at the midpoint and on line between the East Quarter corner and the Center Quarter corner of Section 14.

Corner references:

Red Maple	8"	N66°E	18.11 feet
Sugar Maple	9"	S59°W	4.90 feet
Steel sign post		North	1.0 feet

5. Southeast Sixteenth Corner of Section 14.

Corner position is established at the intersection of the straight lines between opposing sixteenth corners on the perimeter of the Southeast Quarter of Section 14.

Corner references:

Twin Aspen	10"	S45°E	31.12 feet
Red Oak	12"	N85°W	54.63 feet
Fence line		North	77.5 feet
Steel sign post		Northeast	1.0 feet

6. South Sixteenth Corner Between Sections 13 and 14.

Corner position is established at the midpoint and on line between the East Quarter corner and the Southeast Section corner of Section 14.

Corner references:

Aspen	10"	S35°W	21.37 feet
Aspen	7"	N88°W	40.05 feet
Steel sign post		Northwest	0.8 feet

7. West Sixteenth Corner Between Sections 11 and 14.

Corner position is established at the midpoint and on line between the North Quarter corner and the Northwest Section corner of Section 14. The center line of a logging road bears South a distance of 41 ft. from the monument. Road runs due East and West.

Corner references:

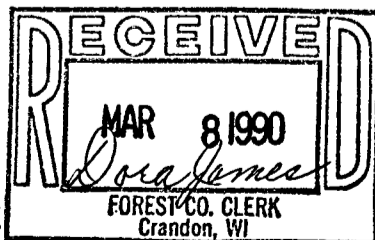
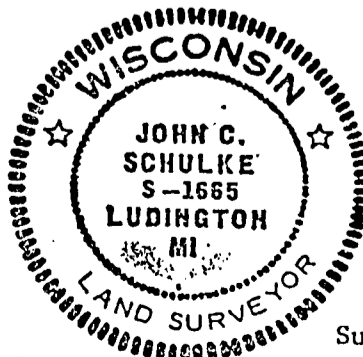
Black Ash	7"	S80°W	29.84 feet
Clump of Red Maple	11"	N52°E	37.92 feet
Steel sign post		North	0.5 feet

SURVEYOR'S AFFIDAVIT

State of Wisconsin)
County of Forest)^{ss}

I, John C. Schulke, a Cadastral Surveyor, and a Registered Land Surveyor in the State of Wisconsin, hereby certify that I have surveyed and subdivided Section 14, Township 37 North, Range 12 East, Fourth Principal Meridian, State of Wisconsin.

The plat map and survey notes herewith are a correct representation of the land surveyed and subdivided. I have surveyed and subdivided said section in accordance with the rules for the survey of the public lands and with the statutes of the State of Wisconsin.



John C. Schulke
4604 So. Pere Marquette Rd.
Ludington, MI 49431
R.L.S. State of Wisconsin
Date of Survey 1989
Certificate S-1665

Survey requested by: Doris James John C. Schulke
Date: Nov. 3rd, 1989
District Ranger