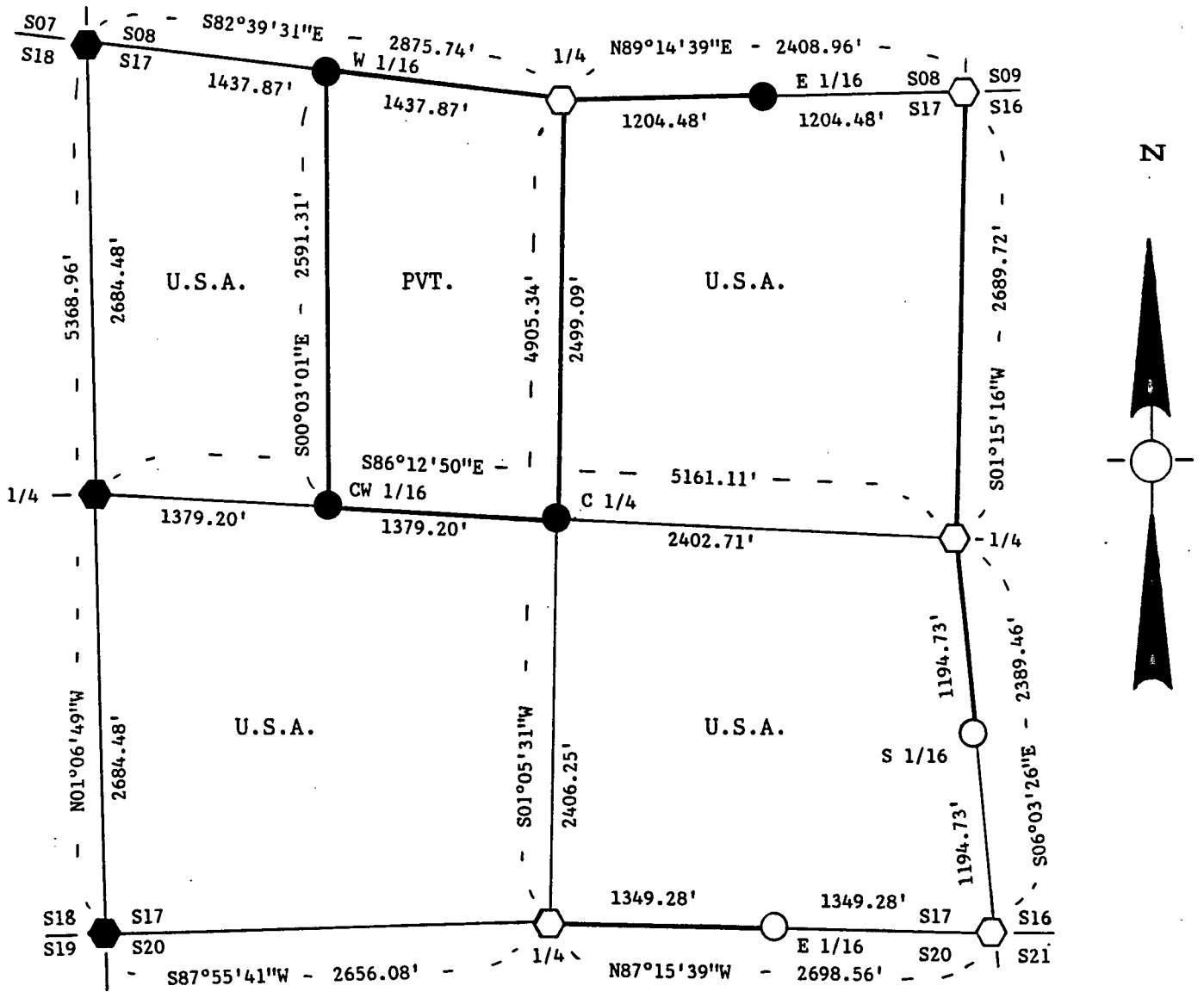


Stock No. 26273

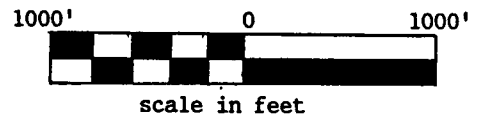
FOREST CO SURVEYOR  
 FILE # 371217-19870106  
 DATE \_\_\_\_\_ BY \_\_\_\_\_

PLAT OF SURVEY FOR CERTIFIED LAND CORNER  
 RESTORATION AND ESTABLISHMENT  
 OF U.S. GOVERNMENT LAND

BEING THE CORNERS FOR THE W 1/2 OF THE NW 1/4,  
 THE NE 1/4, THE SW 1/4 AND THE SE 1/4.  
 SECTION 17, T37N, R12E, FOURTH PRINCIPAL MERIDIAN  
 FOREST COUNTY, STATE OF WISCONSIN



SCALE: 1"=1000'



LEGEND

- Boundary line marked to standard.
- 1 inch diameter aluminum pipe monument, 36 inches long with an aluminum cap stamped to identify the corner.
- 1 inch diameter aluminum pipe monument, 60 inches long with an aluminum cap stamped to identify the corner.
- ⬡ 2 1/2 inch diameter aluminum pipe monument, 36 inches long with an aluminum cap stamped to identify the corner.
- ◆ 2 1/2 inch diameter aluminum pipe monument, 60 inches long with an aluminum cap stamped to identify the corner.

NOTE: Bearings are referenced to polaris observations.

Stock No. 26273

Sheet 2 of 4

SURVEY NOTES

This survey was made by John C. Schulke, a Registered Land Surveyor in the State of Wisconsin, for the U.S. Department of Agriculture, Forest Service. The purpose of the survey was for recovery, establishing, marking and perpetuating the corners and boundary lines of the U.S. Government Land on the perimeter and within Section 17, Township 37 North, Range 12 East, Fourth Principal Meridian, Forest County, Wisconsin.

The original Government survey of the township boundary was done by Alfred Millard, U.S. Deputy Surveyor, in May and June of 1858. The original Government subdivision survey of this township was done by William E. Daugherty in 1859.

The bearings between corner positions are true bearings and determined by reference to polaris observations. The accuracy of this survey exceeds the State requirement for closure of 1 in 3,000. Corners recovered or established by this survey are marked as described in the maps legend. Each monument corner is referenced to blazed, scribed, painted and tagged bearing trees. Tie bearings are magnetic, and not corrected for declination.

CORNERS RECOVERED AND RESTORED

1. Section Corner Common to Sections 17, 18, 19 and 20.  
Restored by proportionate measurement.

## Corner references:

Spruce	4"	N28°E	5.38 feet
Spruce	6"	S88°E	15.16 feet
Spruce	6"	S05°E	5.67 feet
Spruce	5"	N69°W	38.84 feet
Steel sign post		Southeast	1.0 feet

2. Quarter Corner Between Sections 17 and 18.  
Restored by proportionate measurement. The white pine is on a rock outcrop.

## Corner references:

White Pine	14"	N59°E	26.29 feet
Tamarack	4"	S76°E	51.49 feet
Spruce	4"	N86°W	45.36 feet
Spruce	5"	S05°W	37.69 feet
Steel sign post		Southwest	1.0 feet

3. Section Corner Common to Sections 7, 8, 17 and 18.  
Recovered wooden square post laying on it's side.

## Recovered corner references:

Tamarack stump		N02°W	31.0 feet
----------------	--	-------	-----------

## Corner references:

Spruce	5"	S86°W	19.77 feet
Spruce	5"	N20°W	33.40 feet
Spruce	4"	S71°E	2.85 feet
Spruce	4"	S05°W	24.21 feet
Steel sign post		Southwest	1.0 feet

4. Quarter Corner Between Sections 8 and 17.  
Used G.L.O. swamp calls to recover corner and found a very rotten remains of a Cedar post.

## Recovered corner references:

Hemlock		N10°W	7.3 feet
---------	--	-------	----------

Stock No. 26273

Sheet 3 of 4

## Corner references:

Twin Hemlock	15"	N67°E	42.55 feet
Sugar Maple	6"	S45°E	25.64 feet
Sugar Maple	6"	S49°W	11.84 feet
Sugar Maple	6"	N40°W	16.36 feet
Steel sign post		Southeast	1.1 feet

5. Section Corner Common to Sections 9, 8, 16 and 17.

Corner monument recovered in place and as described on Certified Land Corner Restoration form in the Forest County records, Document #124240, in 1982 by Milo Stefan (RLS-1558).

6. Quarter Corner Between Sections 16 and 17.

Corner monument recovered in place and as described on Certified Land Corner Restoration form in the Forest County records, Document #124241, in 1982 by Milo Stefan (RLS-1558).

7. Section Corner Common to Sections 16, 17, 20 and 21.

Found evidence of a post hole. Both GLO trees apparently had been blown down and recovered rotted Hemlock. Swamp call to the South 16.25 chains and swamp call to the East 3.0 chains both fit the GLO notes.

## Corner references recovered:

Decayed Hemlock		S20°E	13.9 feet
Stump hole		S44°W	7.3 feet

## Corner references:

Spruce	14"	N24°E	18.68 feet
Balsam	14"	S73°E	8.5 feet
Balsam	11"	N69°W	29.38 feet
Triple White Birch	14"	N26°W	45.84 feet
Steel sign post		Southeast	0.7 feet

8. Quarter Corner Between Sections 17 and 20.

Corner monument recovered in place and as described on Certified Land Corner Restoration form in the Forest County records, Document #124242, in 1982 by Milo Stefan (RLS-1558).

CORNERS ESTABLISHED1. East Sixteenth Corner Between Sections 17 and 20.

Corner position established at the midpoint and on line between the South Quarter corner and the Southeast Section corner of Section 17. Fence line running South-North is East 23 feet.

## Corner references:

Sugar Maple	10"	N23°W	68.03 feet
Twin Sugar Maple	10"	S73°E	27.0 feet
Basswood	9"	S38°W	47.04 feet
Steel sign post		Southeast	1.3 feet

2. South Sixteenth Corner Between Sections 16 and 17.

Corner position is established at the midpoint and on line between the East Quarter corner and the Southeast Section corner of Section 17. Corner fence post is N13°E 62.1 feet from the monument. The center of Atkins road is N66°W 24 feet from the monument.

## Corner references:

Sugar Maple	5"	N72°E	4.63 feet
Sugar Maple	6"	S66°E	47.27 feet
Sugar Maple	7"	S02°E	33.08 feet
Steel sign post		Southeast	0.9 feet

Stock No. 26273

Plat ready for filing.

District Ranger

Date

Dale B. Stage 2/24/87

Sheet 4 of 4

3. Center Quarter Corner of Section 17.

Corner position is established at the intersection of the straight lines between opposing Quarter corners on the perimeter of Section 17.

## Corner references:

Tamarack	5"	N32°W	29.24 feet
Tamarack	6"	S55°W	28.35 feet
Tamarack	5"	S33°W	25.88 feet
Steel sign post		Southeast	1.3 feet

4. Center West Sixteenth Corner of Section 17.

Corner position is established at the midpoint and on line between the West Quarter corner and the Center Quarter corner of Section 17.

## Corner references:

Cedar	8"	N12°E	68.73 feet
Cedar	10"	S40°W	22.46 feet
Cedar	9"	South	33.45 feet
Steel sign post		South	1.0 feet

5. West Sixteenth Corner of Sections 8 and 17.

Corner position is established at the midpoint and on line between the North Quarter corner and the Northwest Section corner of Section 17.

## Corner references:

Black Spruce	4"	S74°W	33.84 feet
Tamarack	3"	N21°W	26.58 feet
Tamarack	4"	N51°E	54.67 feet
Steel sign post		West	0.7 feet

6. East Sixteenth Corner of Sections 8 and 17.

Corner position is established at the midpoint and on line between the North Quarter corner and the Northeast Section corner of Section 17.

## Corner references:

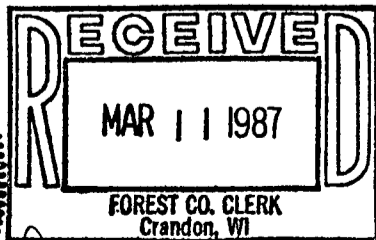
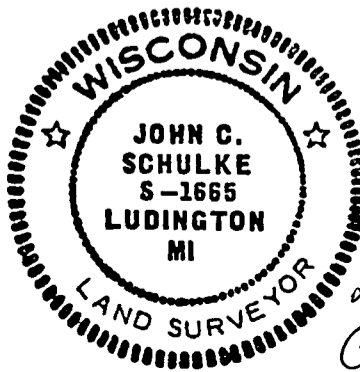
Tamarack	5"	South	27.75 feet
Tamarack	4"	S82°E	27.26 feet
Tamarack	5"	N16°E	28.10 feet
Steel sign post		Southeast	0.9 feet

SURVEYOR'S AFFIDAVIT

State of Wisconsin)  
County of Forest )ss

I, John C. Schulke, a Cadastral Surveyor, and a Registered Land Surveyor in the State of Wisconsin, hereby certify that I have surveyed and subdivided Section 17, Township 37 North, Range 12 East, Fourth Principal Meridian, State of Wisconsin.

The plat and survey notes herewith are a correct representation of the land surveyed and subdivided. I have surveyed and subdivided said section in accordance with the rules for the survey of the public lands and with the statutes of the State of Wisconsin.



John C. Schulke  
4604 South U.S.-31  
Ludington, MI 49431  
R.L.S. State of Wisconsin  
Date of Survey 1986  
Certificate S-1665

Dora C. James  
County Clerk

John C. Schulke  
January 6th, 1987