

Stock No. 26273

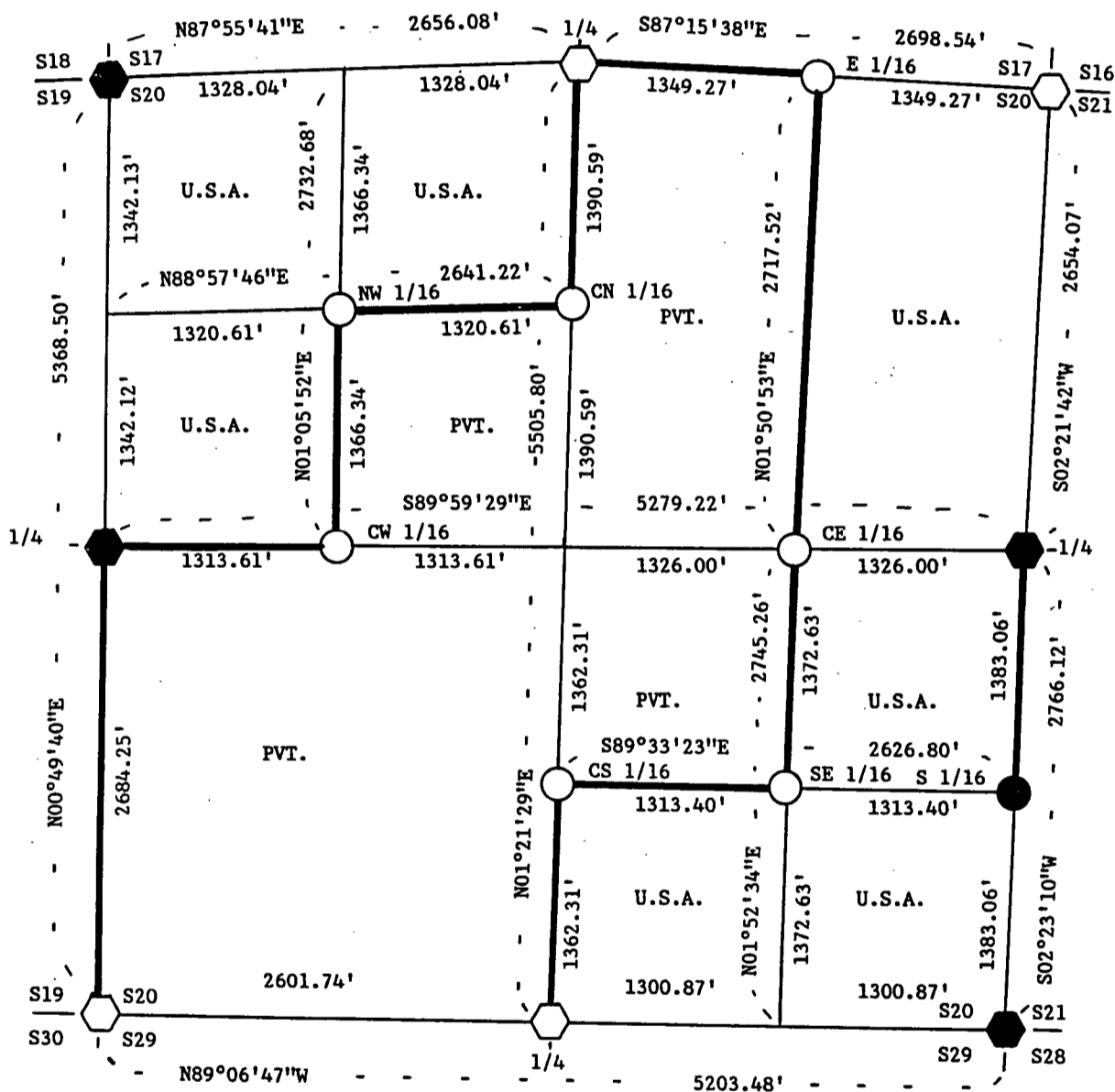
FOREST CO SURVEYOR

FILE # 371220-16870413

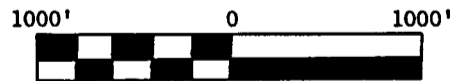
DATE \_\_\_\_\_ BY \_\_\_\_\_

PLAT OF SURVEY FOR CERTIFIED LAND CORNER RESTORATION AND ESTABLISHMENT OF U.S. GOVERNMENT LAND

BEING THE CORNERS FOR THE N 1/2 OF THE NW 1/4, THE SW 1/4 OF THE NW 1/4, THE E 1/2 OF THE NE 1/4, THE E 1/2 OF THE SE 1/4 AND THE SW 1/4 OF THE SE 1/4. SECTION 20, T37N, R12E FOURTH PRINCIPAL MERIDIAN FOREST COUNTY, STATE OF WISCONSIN



SCALE: 1"=1000'



scale in feet

LEGEND

- Boundary line marked to standard.
- 1 inch diameter aluminum pipe monument, 36 inches long with an aluminum cap stamped to identify the corner.
- 1 inch diameter aluminum pipe monument, 60 inches long with an aluminum cap stamped to identify the corner.
- ⬡ 2 1/2 inch diameter aluminum pipe monument, 36 inches long with an aluminum cap stamped to identify the corner.
- ⬢ 2 1/2 inch diameter aluminum pipe monument, 60 inches long with an aluminum cap stamped to identify the corner.

NOTE: Bearings are reference to polaris observations.

Stock No. 26273

Sheet 2 of 5

SURVEY NOTES

This survey was made by John C. Schulke, a Registered Land Surveyor in the State of Wisconsin, for the U.S. Department of Agriculture, Forest Service. The purpose of the survey was for recovery, establishing, marking and perpetuating the corners and boundary lines of the U.S. Government Land on the perimeter and within Section 20, Township 37 North, Range 12 East, Fourth Principal Meridian, Forest County, Wisconsin.

The original Government survey of the township boundary was done by Alfred Millard, U.S. Deputy Surveyor, in May and June of 1858. The original Government subdivision survey of this township was done by William E. Daugherty in 1859.

The bearings between corner positions are true bearings as determined by reference to polaris observations. The accuracy of this survey exceeds the State requirement for closure of 1 in 3,000. Corners recovered or established by this survey are marked as described in the maps legend. Each monument corner is referenced to blazed, scribed, painted and tagged bearing trees. Tie bearings are magnetic, and not corrected for declination.

CORNERS RECOVERED AND RESTORED

1. Section Corner Common to Sections 17, 18, 19 and 20.  
Restored by proportionate measurement.

## Corner references:

Spruce	4"	N28°E	5.38	feet
Spruce	6"	S88°E	15.16	feet
Spruce	6"	S05°E	5.67	feet
Spruce	5"	N69°W	38.84	feet
Steel sign post		Southeast	1.0	feet

2. Quarter Corner Between Sections 17 and 20.

Corner monument recovered in place and as described on Certified Land Corner Restoration form in the Forest County records, Document #124242, in 1982 by Milo Stefan (RLS-1558).

3. Section Corner Common to Sections 16, 17, 20 and 21.

Found evidence of a post hole. Both GLO trees apparently had been blown down and recovered rotted Hemlock. Swamp call to the South 16.25 chains and swamp call to the East 3.0 chains both fit the GLO notes.

## Corner references recovered:

Decayed Hemlock		S20°E	13.9	feet
Stump hole		S44°W	7.3	feet

## Corner references:

Spruce	14"	N24°E	18.68	feet
Balsam	14"	S73°E	8.5	feet
Balsam	11"	N69°W	29.38	feet
Triple White Birch	14"	N26°W	45.84	feet
Steel sign post		Southeast	0.7	feet

4. Quarter Corner Between Sections 20 and 21.

Found evidence of an original badly rotted scribed post.

## Corner references recovered:

Decayed Tamarack		N37°E	7.9	feet
------------------	--	-------	-----	------

Stock No. 26273

Sheet 3 of 5

## Corner references:

Cedar	7"	N82°E	25.14 feet
Cedar	10"	S04°W	41.28 feet
Cedar	10"	S89°W	37.39 feet
Cedar	12"	N09°W	15.81 feet
Steel sign post		North	0.9 feet

5. Section Corner Common to Sections 20, 21, 28 and 29.

Recovered evidence of GLO bearing trees. The location of these trees places the corner in the same location as the railroad surveys.

## Corner references recovered:

Decayed Cedar stump		N40°E	33.0 feet
Decayed Cedar stump		S64°W	11.9 feet

## Corner references:

Black Ash	8"	N51°E	17.83 feet
Cedar	8"	S71°E	23.83 feet
Black Ash	10"	S15°W	29.05 feet
Cedar	5"	N43°W	23.86 feet
Steel sign post		Northeast	0.8 feet

6. Quarter Corner Between Sections 20 and 29.

Restored by proportionate measurement.

## Corner references:

Sugar Maple	4"	N62°W	38.22 feet
Sugar Maple	10"	N38°E	8.80 feet
Sugar Maple	10"	S30°E	18.40 feet
Sugar Maple	5"	S56°W	11.06 feet
Steel sign post		Northwest	0.8 feet

7. Section Corner Common to Sections 19, 20, 29 and 30.

Recovered evidence of GLO bearing trees. Found charred fragments of wood post down about 1 1/2 feet in the ground. GLO swamp calls to the South 297 feet and North 1,221 feet fit the corner position. Found 3/4" diameter iron pipe S31°E a distance of 38.72 feet.

## Corner references recovered:

Birch stump hole		N82°W	3.3 feet
Birch stump hole		S72°E	4.6 feet

## Corner references:

Red Maple	5"	N46°W	24.58 feet
Red Maple	8"	N35°E	26.16 feet
Red Maple	6"	S54°E	16.64 feet
Red Maple	8"	S31°W	16.96 feet
Steel sign post		Northwest	1.0 feet

8. Quarter Corner Between Sections 19 and 20.

Restored by proportionate measurement.

## Corner references:

Spruce	5"	N67°E	45.86 feet
Tamarack	3"	N22°E	95.13 feet
Tamarack	5"	S54°E	95.72 feet
Spruce	4"	S69°W	38.62 feet
Steel sign post		Northwest	0.9 feet

Stock No. 26273

Sheet 4 of 5

CORNER ESTABLISHED1. East Sixteenth Corner Between Sections 17 and 20.

Corner position is established at the midpoint and on line between the North Quarter corner and the Northeast Section corner of Section 20. Fence corner is N27°E 60.0 feet (old fence line runs South and West from the corner).

## Corner references:

Sugar Maple	10"	N23°W	68.03 feet
Twin Sugar Maple	10"	S73°E	27.0 feet
Basswood	9"	S38°W	47.04 feet
Steel sign post		Southeast	1.3 feet

2. Northwest Sixteenth Corner Of Section 20.

Corner position is at the intersection of the straight lines between opposing sixteenth corners on the perimeter of the Northwest Quarter of Section 20.

## Corner references:

Hemlock	12"	S83°W	12.55 feet
Red Maple	10"	N30°E	29.85 feet
Hemlock	11"	N48°W	24.03 feet
Steel sign post		Northwest	1.0 feet

3. Center North Sixteenth Corner Of Section 20.

Corner position is established at the midpoint and on line between the North Quarter corner and the Center Quarter corner of Section 20.

## Corner references:

Twin Sug. Maple	7"	S42°W	17.17 feet
Red Maple	7"	N70°E	23.09 feet
Basswood	9"	N71°E	9.02 feet
Steel sign post		Northwest	1.4 feet

4. Center West Sixteenth Corner Of Section 20.

Corner position is established at the midpoint and on line between the West Quarter corner and the Center Quarter corner of Section 20. Center of a foot trail Northwest 27 feet (trail bears N65°E).

## Corner references:

Red Maple	7"	S22°W	19.96 feet
Red Maple	6"	N38°W	39.05 feet
Sugar Maple	5"	N81°E	10.65 feet
Steel sign post		Southeast	0.9 feet

5. Center East Sixteenth Corner Of Section 20.

Corner position is established at the midpoint and on line between the East Quarter corner and the Center Quarter corner of Section 20. Fence corner N07°E 21.2 feet (fence runs North and West from the corner).

## Corner references:

Triple Red Maple	5"	N77°E	28.24 feet
Spruce	18"	S37°W	36.36 feet
White Birch	11"	N72°W	39.71 feet
Steel sign post		East-SE	1.5 feet

6. Center South Sixteenth Corner Of Section 20.

Corner position is established at the midpoint and on line between the South Quarter corner and the Center Quarter corner of Section 20.

## Corner references:

Cedar	7"	S50°E	7.26 feet
Black Ash	6"	S88°W	7.77 feet
Black Ash	5"	N18°W	17.28 feet
Steel sign post		North	1.0 feet

Stock No. 26273

Sheet 5 of 5

7. Southeast Sixteenth Corner of Section 20.

Corner position is at the intersection of the straight lines between opposing sixteenth corners on the perimeter of the Southeast Quarter of Section 20.

## Corner references:

Cedar	8"	N15°W	13.42	feet
Cedar	8"	S25°W	11.58	feet
Cedar	4"	S76°E	14.00	feet
Steel sign post		Southeast	1.0	feet

8. South Sixteenth Corner Between Sections 20 and 21.

Corner position is established at the midpoint and on line between the East Quarter corner and the Southeast Section corner of Section 20.

## Corner references:

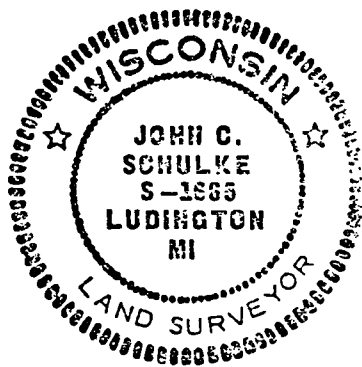
Cedar	8"	N02°E	51.30	feet
Cedar	6"	S45°E	28.05	feet
Cedar	12"	S60°W	15.93	feet
Steel sign post		Southwest	1.7	feet

SURVEYOR'S AFFIDAVIT

State of Wisconsin)  
County of Forest )ss

I, John C. Schulke, a Cadastral Surveyor, and a Registered Land Surveyor in the State of Wisconsin, hereby certify that I have surveyed and subdivided Section 20, Township 37 North, Range 12 East, Fourth Principal Meridian, State of Wisconsin.

The plat and survey notes herewith are a correct representation of the land surveyed and subdivided. I have surveyed and subdivided said section in accordance with the rules for the survey of the public lands and with the statutes of the State of Wisconsin.



John C. Schulke  
4604 South U.S.-31  
Ludington, MI 49431  
R.L.S. State of Wisconsin  
Date of Survey 1987  
Certificate S-1665

*John C. Schulke*

4-13-87

Survey requested by: Dale S. Stage

District Ranger

2/1/88  
Date

