

Stock No. 26273

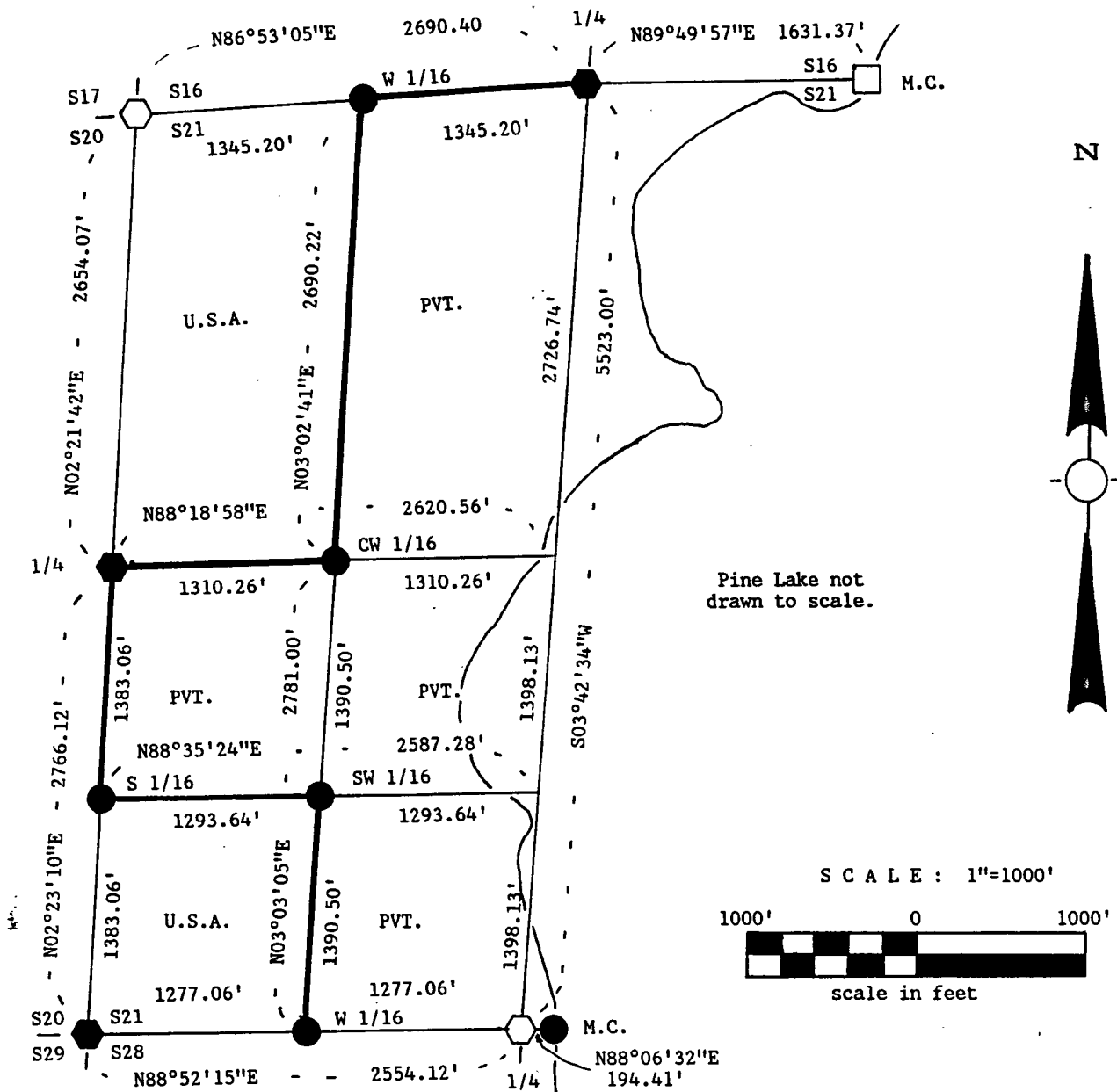
FOREST CO SURVEYOR

FILE # 371221-19870106

DATE _____ BY _____

PLAT OF SURVEY FOR CERTIFIED LAND CORNER RESTORATION AND ESTABLISHMENT OF U.S. GOVERNMENT LAND

BEING THE CORNERS FOR WEST 1/2 OF THE NW 1/4 AND THE SW 1/4 OF THE SW 1/4.
SECTION 21, T37N, R12E, FOURTH PRINCIPAL MERIDIAN
FOREST COUNTY, STATE OF WISCONSIN



LEGEND

- Boundary line marked to standard.
- 1 inch diameter aluminum pipe monument, 36 inches long with an aluminum cap stamped to identify the corner.
- 1 inch diameter aluminum pipe monument, 60 inches long with an aluminum cap stamped to identify the corner.
- ⬡ 2 1/2 inch diameter aluminum pipe monument, 36 inches long with an aluminum cap stamped to identify the corner.
- ⬤ 2 1/2 inch diameter aluminum pipe monument, 60 inches long with an aluminum cap stamped to identify the corner.
- 1 1/4 inch diameter axle shaft extending out of a rock pile.

NOTE: Bearings are reference to polaris observations.

Stock No. 26273

Sheet 2 of 5

SURVEY NOTES

This survey was made by John C. Schulke, a Registered Land Surveyor in the State of Wisconsin, for the U.S. Department of Agriculture, Forest Service. The purpose of the survey was for recovery, establishing, marking and perpetuating the corners and boundary lines of the U.S. Government Land on the perimeter and within Section 21, Township 37 North, Range 12 East, Fourth Principal Meridian, Forest County, Wisconsin.

The original Government survey of the township boundary was done by Alfred Millard, U.S. Deputy Surveyor, in May and June of 1858. The original Government subdivision survey of this township was done by William E. Daugherty in 1859.

The bearings between corner positions are true bearings as determined by reference to polaris observations. The accuracy of this survey exceeds the State requirement for closure of 1 in 3,000. Corners recovered or established by this survey are marked as described in the map legend. Each monumented corner is referenced to blazed, scribed, painted and tagged bearing trees. Tie bearings are magnetic, and not corrected for declination.

CORNERS RECOVERED AND RESTORED1. Section Corner Common to Sections 16, 17, 20 and 21.

Found evidence of a post hole. Both GLO trees apparently had been blown down and recovered rotted Hemlock. Swamp call to the South 16.25 chains and swamp call to the East 3.0 chains both fit the GLO notes.

Corner references recovered:

Decayed Hemlock		S20°E	13.9	feet
Stump hole		S44°W	7.3	feet

New corner references:

Spruce	14"	N24°E	18.68	feet
Balsam	14"	S73°E	8.5	feet
Balsam	11"	N69°W	29.38	feet
Triple White Birch	14"	N26°W	45.84	feet
Steel sign post		SE	0.7	feet

2. Quarter Corner Between Sections 16 and 21.

Found aluminum monument set by Bill Cochrane (RLS-1107) in 1983, in place.

Corner references recovered:

Cedar	13"	N86°W	13.58	feet
-------	-----	-------	-------	------

New corner references:

Cedar	16"	N48°W	16.99	feet
Cedar	8"	N38°E	17.22	feet
Cedar	5"	S69°E	22.93	feet
Cedar	12"	S16°W	69.88	feet
Steel sign post		North	within 1.0	feet

3. Meander Corner Between Sections 16 and 21.

Found 1 1/4" dia. truck axle in a mound of boulders. Accepted axle shaft for corner position. Lakeshore 6 feet East.

Corner references:

Twin Red Maple	10"	N75°W	44.53	feet
Red Maple	12"	N18°W	55.99	feet
Red Maple	10"	N20°E	36.02	feet
Red Maple	10"	S50°W	33.41	feet
Steel sign post		NW	2.1	feet

Stock No. 26273

Sheet 3 of 5

4. Meander Corner Between Sections 21 and 28.

Found evidence a scribed wood post with 1" dia. iron pipe at the corner. Accepted iron pipe for the corner position and replaced it with an aluminum monument. The shore line is East 3.1 feet from the monument. The South-east corner of a garage is N45°W 15.46 feet from the monument.

Corner references:

Hemlock	8"	S07°E	41.16 feet
Hemlock	8"	S40°W	8.10 feet
Hemlock	9"	S86°W	9.87 feet
Sugar Maple	20"	S69°W	33.74 feet
Steel sign post		Southwest	2.1 feet

5. Quarter Corner Between Sections 21 and 28.

Recovered a 3/4 inch diameter iron pipe at the corner. Accepted iron pipe for the corner position and replaced it with an aluminum monument.

Corner references:

Red Maple	16"	N72°W	60.27 feet
Sugar Maple	7"	S28°W	35.18 feet
Red Maple	10"	S40°E	2.0 feet
SW corner of house		N18°E	34.85 feet
Steel sign post		Southeast	0.7 feet

6. Section Corner Common to Sections 20, 21, 28 and 29.

Recovered evidence of GLO bearing trees. The location of these trees places the corner in the same location as the railroad surveys.

Corner references recovered:

Decayed Cedar stump		N40°E	33.0 feet
Decayed Cedar stump		S64°W	11.9 feet

Corner references:

Black Ash	8"	N51°E	17.83 feet
Cedar	8"	S71°E	23.83 feet
Black Ash	10"	S15°W	29.05 feet
Cedar	5"	N43°W	23.86 feet
Steel sign post		Northeast	0.8 feet

7. Quarter Corner Between Sections 20 and 21.

Found evidence of an original badly rotted scribed post.

Corner references recovered:

Decayed Tamarack		N37°E	7.9 feet
------------------	--	-------	----------

Corner references:

Cedar	7"	N82°E	25.14 feet
Cedar	10"	S04°W	41.28 feet
Cedar	10"	S89°W	37.39 feet
Cedar	12"	N09°W	15.81 feet
Steel sign post		North	0.9 feet

COMPUTED CORNER1. Center Quarter Corner of Section 21.

Computed to be at the intersection of the straight line between the North and South Quarter corners and East-West Quarter line. Note: the bearing of the East-West Quarter line is the "mean" bearing of the North and South Section lines of Section 21.

Stock No. 26273

Sheet 4 of 5

CORNERS ESTABLISHED1. West Sixteenth Corner Between Sections 16 and 21.

Corner position is established at the midpoint and on line between the Northwest Section corner and the North Quarter corner of Section 21.

Corner references:

Cedar	13"	S74°W	13.16 feet
Cedar	12"	N06°E	12.82 feet
Cedar	11"	N86°E	35.52 feet
Steel sign post		Northwest	0.9 feet

2. Center West Sixteenth Corner of Section 21.

Corner position is established at the midpoint and on line between the West Quarter corner and the Center Quarter corner of Section 21. A square wood post is S10°W 13.0 feet from the monument.

Corner references:

Cedar	8"	S12°E	6.37 feet
Cedar	13"	N50°W	21.58 feet
White Birch	6"	N10°E	23.99 feet
Steel sign post		West	1.2 feet

3. South Sixteenth Corner Between Sections 20 and 21.

Corner position is established at the midpoint and on line between the West Quarter corner and the Southwest Section corner of Section 21.

Corner references:

Cedar	8"	N02°E	51.30 feet
Cedar	6"	S45°E	28.05 feet
Cedar	12"	S60°W	15.93 feet
Steel sign post		Southwest	1.7 feet

4. Southwest Sixteenth Corner of Section 21.

Corner position is established at the intersection of the straight lines between opposing sixteenth corners on the perimeter of the Southwest Quarter of Section 21. A scribed wood post 30 inches high is S85°W 21.6 feet from the monument. Eleven inches diameter Cedar tree with scribing on the Southwest side is N62°W 12.15 feet from the monument.

Corner references:

Cedar	7"	S65°E	33.25 feet
Cedar	7"	S22°W	23.33 feet
Cedar	7"	N30°W	9.63 feet
Steel sign post		Southwest	0.6 feet

5. West Sixteenth Corner Between Sections 21 and 28.

Corner position is established at the midpoint and on line between the Southwest Section corner and the South Quarter corner of Section 21. A Square wood post is N84°W 11.5 feet from the monument.

Corner references:

Cedar	6"	S35°E	8.77 feet
Cedar	6"	N16°W	20.47 feet
White Birch	7"	S79°W	21.48 feet
Steel sign post		Northwest	1.0 foot

Stock No. 26273

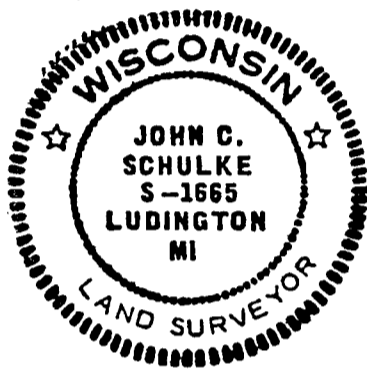
Sheet 5 of 5

SURVEYOR'S AFFIDAVIT

State of Wisconsin)
 County of Forest)^{ss}

I, John C. Schulke, a Cadastral Surveyor, and a Registered Land Surveyor in the State of Wisconsin, hereby certify that I have surveyed and subdivided Section 21, Township 37 North, Range 12 East, Fourth Principal Meridian, State of Wisconsin.

The plat and survey notes herewith are a correct representation of the land surveyed and subdivided. I have surveyed and subdivided said section in accordance with the rules for the survey of the public lands and with the statutes of the State of Wisconsin.



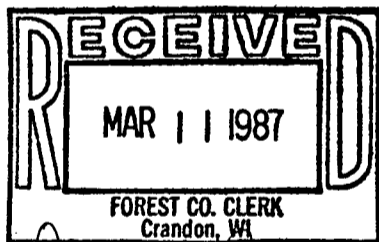
John C. Schulke
 4604 South U.S.-31
 Ludington, MI 49431
 R.L.S. State of Wisconsin
 Date of Survey 1986
 Certificate S-1665

John C. Schulke
January 6, 1987

Plat ready for filing:

Dale B. Staeger
 District Ranger

2/24/87
 Date



Dora C. James
 County Clerk