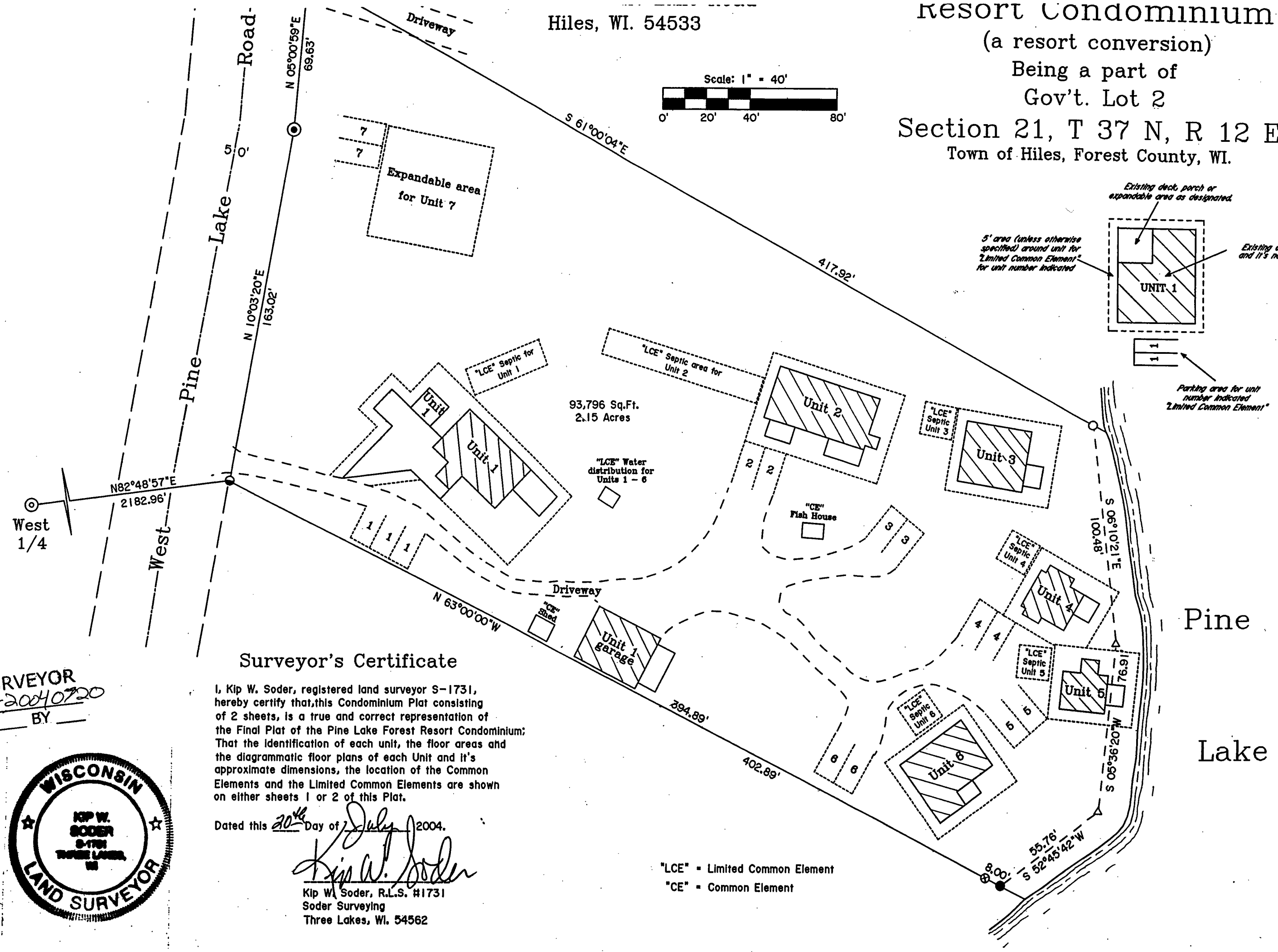
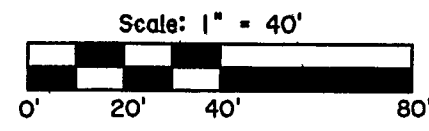


Hiles, WI. 54533

Resort Condominium  
(a resort conversion)  
Being a part of  
Gov't. Lot 2  
Section 21, T 37 N, R 12 E  
Town of Hiles, Forest County, WI.



Surveyor's Certificate

I, Kip W. Soder, registered land surveyor S-1731, hereby certify that this Condominium Plat consisting of 2 sheets, is a true and correct representation of the Final Plat of the Pine Lake Forest Resort Condominium; That the identification of each unit, the floor areas and the diagrammatic floor plans of each Unit and its approximate dimensions, the location of the Common Elements and the Limited Common Elements are shown on either sheets 1 or 2 of this Plat.

Dated this 20<sup>th</sup> Day of July, 2004.

*Kip W. Soder*  
Kip W. Soder, R.L.S. #1731  
Soder Surveying  
Three Lakes, WI. 54562

"LCE" = Limited Common Element  
"CE" = Common Element

FOREST CO SURVEYOR  
FILE # 371221-20040720  
DATE \_\_\_\_\_ BY \_\_\_\_\_

