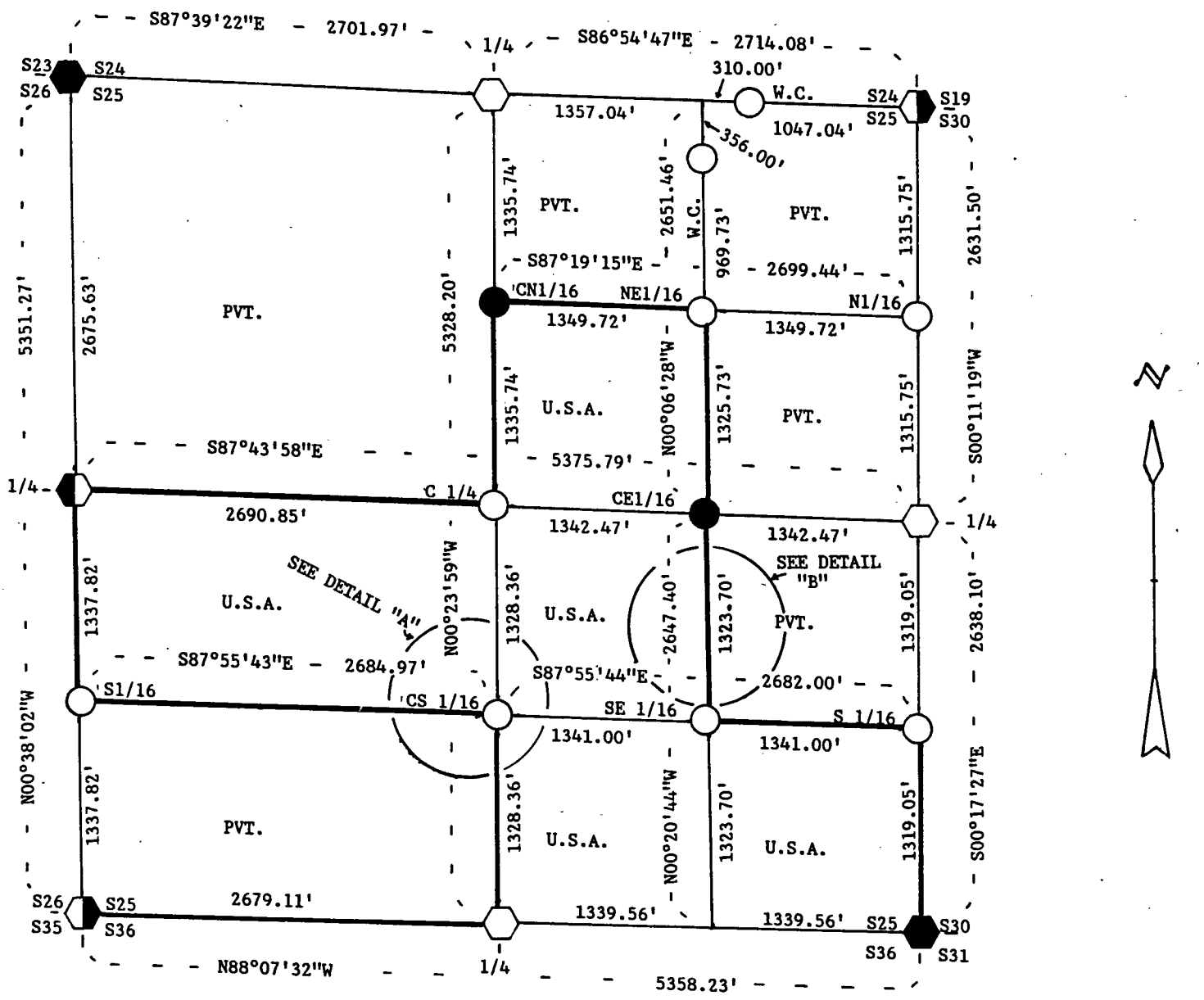


Stock No. 26273

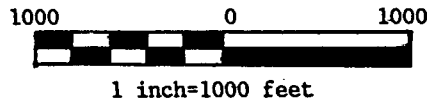
FOREST CO SURVEYOR  
 FILE # 371225-19871112  
 DATE \_\_\_\_\_ BY \_\_\_\_\_

PLAT OF SURVEY FOR CERTIFIED LAND CORNER  
 RESTORATION AND ESTABLISHMENT  
 OF U.S. GOVERNMENT LAND

BEING THE CORNERS FOR THE N 1/2 OF THE SW 1/4, SW 1/4 OF THE NE 1/4,  
 S 1/2 OF THE SE 1/4 AND THE NW 1/4 OF THE SE 1/4.  
 SECTION 25, T37N, R12E, FOURTH PRINCIPAL MERIDIAN  
 FOREST COUNTY, STATE OF WISCONSIN



SCALE IN FEET



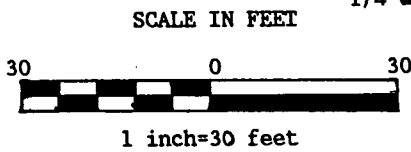
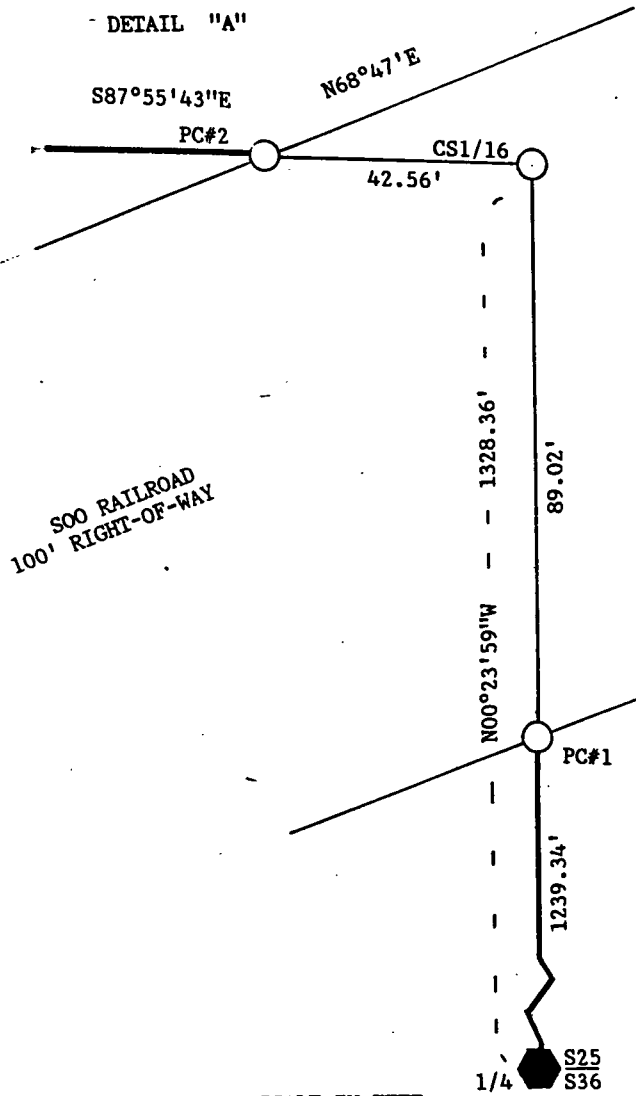
LEGEND

- Boundary line marked to standard.
- 1" diameter aluminum pipe monument, 36 inches long with an aluminum cap stamped to identify the corner.
- 1" diameter aluminum pipe monument, 60 inches long with an aluminum cap stamped to identify the corner.
- ◐ 2 1/2" diameter aluminum pipe monument, 30 inches long with an aluminum cap stamped to identify the corner.
- ◑ 2 1/2" diameter aluminum pipe monument, 36 inches long with an aluminum cap stamped to identify the corner.
- ◒ 2 1/2" diameter aluminum pipe monument, 60 inches long with an aluminum cap stamped to identify the corner.
- ◓ 2 1/2" Berntsen, A-1 Federal Monument with a cap stamped to identify the corner.

NOTE: Bearings are referenced to U.S.G.S. triangulation stations.

Stock No. 26273

Sheet 2 of 7

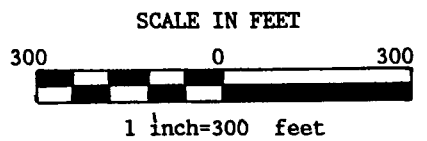
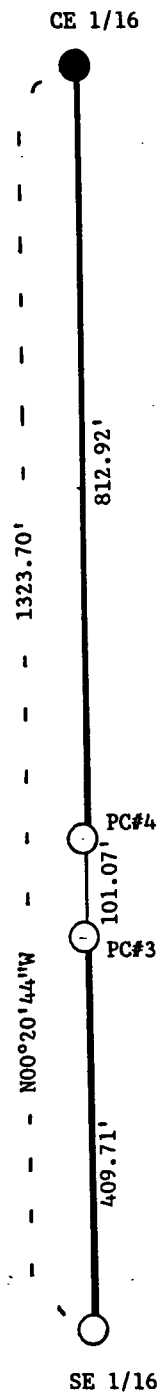


LEGEND

- Boundary line marked to standard.
- 1" diameter aluminum pipe monument, 36 inches long with an aluminum cap stamped to identify the corner.
- 1" diameter aluminum pipe monument, 60 inches long with an aluminum cap stamped to identify the corner.
- ⬠ 2 1/2" diameter aluminum pipe monument, 36 inches long with an aluminum cap stamped to identify the corner.

NOTE: Bearings are referenced to U.S.G.S. triangulation stations.

DETAIL "B"



Stock No. 26273

Sheet 3 of 7

## SURVEY NOTES

This survey was made by John C. Schulke, a Registered Land Surveyor in the State of Wisconsin, for the U.S. Department of Agriculture, Forest Service. The purpose of the survey was for recovery, establishing, marking and perpetuating the corners and boundary lines of the U.S. Government Land on the perimeter and within Section 25, Township 37 North, Range 12 East, Fourth Principal Meridian, Forest County, Wisconsin.

The original Government survey of the township boundary was done by Alfred Millard, a U.S. Deputy Surveyor, in May and June of 1858. The original Government subdivision survey of this township was done by William E. Daugherty in 1859.

The bearings between corner positions are true bearings as determined by reference to U.S.G.S. triangulation stations. The accuracy of this survey exceeds the State requirement for closure of 1 in 3,000. Corners recovered or established by this survey are marked as described in the map legend. Each monumented corner is referenced to blazed, scribed, painted and tagged bearing trees. Tie bearings are magnetic, and not corrected for declination.

CORNERS RECOVERED AND RESTORED

1. Section Corner Common to Sections 23, 24, 25 and 26.  
Corner monument recovered in place and as described on Certified Land Corner Restoration form in the Forest County Records, Document #112190, in Aug. 1977 by William B. Cochrane (S-1107).
2. Quarter Corner Between Sections 24 and 25.  
Recovered iron pipe and replaced it with an aluminum monument.

## Corner references:

Sugar Maple	4"	S35°E	24.99 feet
Sugar Maple	11"	N52°E	15.58 feet
Triple Sug. Maple	10"	N21°W	33.34 feet
Black Cherry	10"	S56°W	27.50 feet
Steel Sign Post		South	1.0 feet

3. Section Corner Common to Sections 19, 24, 25 and 30.  
Accepted center of road intersection as the best evidence of original corner location.

## Corner references:

Sugar Maple	24"	N64°E	121.10 feet
Sugar Maple	16"	N31°W	50.02 feet
White Birch	3"	S77°E	36.70 feet
Stop Sign		S29°E	42.1 feet
Steel Sign Post		S61°W	23.6 feet

4. Quarter Corner Between Sections 25 and 30.  
Found an old boundary fences running North, South and East. Accepted the intersection of the fences as the besst evidence of the corner.

## Corner references:

Triple Red Maple	16"	N27°E	20.78 feet
Red Maple	7"	East	6.89 feet
Balsam	6"	S21°W	43.84 feet
White Birch	6"	S65°W	32.15 feet
Steel Sign Post		Northeast	1.1 feet

Stock No. 26273

Sheet 4 of 7

5. Section Corner Common to Sections 25, 30, 31 and 36.  
Corner monument recovered in place and as described on Certified Land Corner Restoration form in the Forest County Records, Document #112874, in Nov. 1977 by William B. Cochrane (S-1107).

6. Quarter Corner Between Sections 25 and 36.  
Corner position restored by proportionate measurement.

## Corner references:

Sugar Maple	10"	S39°E	35.54 feet
Sugar Maple	14"	S65°W	4.22 feet
Sugar Maple	13"	N32°W	42.55 feet
Sugar Maple	8"	N63°E	36.81 feet
Steel sign post		Southwest	0.9 feet

7. Section Corner Common to Sections 25, 26, 35 and 36.  
Corner monument recovered in place and as described on U.S. Public Land Survey Monument Record form in the Forest County Records, dated in March 1987 by Alan D. Harrison (S-1651).

8. Quarter Corner Between Sections 25 and 26.  
Corner position restored by proportionate measurement.

## Corner references:

Spruce	8"	N57°E	34.60 feet
Spruce	4"	N28°W	31.41 feet
Spruce	11"	N80°W	139.19 feet
Spruce	4"	S71°E	13.65 feet
Steel sign post		South	0.9 feet

CORNERS ESTABLISHED

1. Witness Corner to the East Sixteenth of Sections 24 and 25.  
Corner position is established on Section line S86°55'E of the sixteenth corner a distance of 310.00 feet.

## Corner references:

Hemlock	11"	S07°W	47.96 feet
Red Maple	7"	S38°E	52.0 feet
Maple	7"	S86°E	74.44 feet
Steel sign post		West	0.7 feet

2. Witness Corner to the East Sixteenth of Sections 24 and 25.  
Corner position is established on East Sixteenth line of Section 25 S00°06'28"E of the sixteenth corner a distance of 356.00 feet.

## Corner references:

Red Maple	10"	N63°E	49.81 feet
Red Maple	13"	S74°E	28.85 feet
Red Maple	8"	S23°W	84.85 feet
Steel sign post		North	1.0 feet

3. Center North Sixteenth Corner of Section 25.  
Corner position is established at the midpoint and on line between the North Quarter corner and the Center Quarter corner of Section 25.

## Corner references:

White Birch	7"	N60°W	29.81 feet
Red Maple	4"	N04°W	24.86 feet
Jack Pine	9"	S50°E	14.88 feet
Steel sign post		Northwest	0.8 feet

Stock No. 26273

Sheet 5 of 7

4. Northeast Sixteenth Corner of Section 25.

Corner position is established at the intersection of the straight lines between opposing sixteenth corners on the perimeter of the Northeast Quarter of Section 25. 1 inch iron rod by the fence corner located N37°W a distance of 6.15 feet from the monument.

## Corner references:

Red Maple	12"	N48°E	22.81 feet
Red Maple	6"	S16°W	53.90 feet
White Ash	7"	N55°W	33.02 feet
Steel sign post		N-NE	3.4 feet

5. Center Quarter Corner of Section 25.

Corner position is established at the intersection of the straight lines between opposing Quarter corners on the perimeter of Section 25.

## Corner references:

Sugar Maple	9"	N64°W	11.76 feet
Sugar Maple	10"	S74°W	26.00 feet
Sugar Maple	9"	S45°E	8.53 feet
Steel sign post		South	0.9 feet

6. Center East Sixteenth Corner of Section 25.

Corner position is established at the midpoint and on line between the East Quarter corner and the Center Quarter corner of Section 25.

## Corner references:

Tamarack	6"	N32°W	92.90 feet
Tamarack	5"	N77°W	115.45 feet
Corner Post		N70°E	24.91 feet
Steel sign post		Northwest	0.9 feet

7. South Sixteenth Corner Between Sections 25 and 26.

Corner position is established at the midpoint and on line between the West Quarter corner and the Southwest Section corner of Section 25.

## Corner references:

White Birch	6"	S34°W	20.81 feet
White Birch	8"	N31°W	48.87 feet
Spruce	6"	N47°E	21.02 feet
Steel sign post		South	0.6 feet

8. Property Corner Number 2 of Section 25.

Corner position is established at the intersection of the South Sixteenth line of Section 25 with the North right-of-way line of Soo Railroad.

## Corner references:

Sugar Maple	14"	N88°W	69.66 feet
Cherry	6"	N24°W	105.96 feet
Basswood	7"	S73°W	59.11 feet
Steel sign post		North	0.8 feet

9. Center South Sixteenth Corner of Section 25.

Corner position is established at the midpoint and on line between the South Quarter corner and the Center Quarter corner of Section 25.

## Corner references:

White Birch	6"	N10°E	101.65 feet
Cherry	7"	N09°W	111.84 feet
Sugar Maple	14"	N84°W	112.45 feet
Steel sign post		Northeast	0.7 feet

Stock No. 26273

Sheet 6 of 7

10. Property Corner Number 1 of Section 25.

Corner position is established at the intersection of the North-South Quarter line of Section 25 with the South right-of-way line of Soo Railroad.

## Corner references:

Black Ash	9"	S23°W	12.49 feet
Twin Sugar Maple	6"	S67°W	27.04 feet
Balsam	8"	N59°W	27.67 feet
Steel sign post		Southeast	0.8 feet

11. Property Corner Number 3 of Section 25.

Corner position is established at the intersection of the East Sixteenth line of Section 25 with the South right-of-way line of Soo Railroad.

## Corner references:

Sugar Maple	12"	S86°E	17.93 feet
White Birch	12"	S10°E	28.54 feet
White Birch	9"	S67°W	19.55 feet
Steel sign post		Southeast	1.0 feet

12. Property Corner Number 4 of Section 25.

Corner position is established at the intersection of the East Sixteenth line of Section 25 with the North right-of-way line of Soo Railroad.

## Corner references:

Cherry	9"	S79°W	51.03 feet
U.S.G.S. Station			
Lewis		N16°W	25.30 feet
Basswood	7"	S51°E	11.81 feet
Steel sign post		North	0.8 feet

13. Southeast Sixteenth Corner of Section 25.

Corner position is established at the intersection of the straight lines between opposing sixteenth corners on the perimeter of the Southeast Quarter of Section 25.

## Corner references:

Red Maple	5"	N74°E	16.41 feet
Red Maple	5"	N45°W	27.24 feet
Red Maple	6"	S30°W	15.68 feet
Steel sign post		Southwest	0.9 feet

14. South Sixteenth Corner Between Sections 25 and 30.

Corner position is established at the midpoint and on line between the East Quarter corner and the Southeast Section corner of Section 25.

## Corner references:

Sugar Maple	10"	N43°W	20.02 feet
Sugar Maple	5"	S49°W	50.88 feet
Sugar Maple	6"	S43°E	14.51 feet
Steel sign post		South	0.8 feet

15. North Sixteenth Corner Between Sections 25 and 30.

Corner position is established at the midpoint and on line between the East Quarter corner and the Northeast Section corner of Section 25.

## Corner references:

Power pole	#3712-25E5	N16°W	62.90 feet
Spruce	22"	S02°W	66.38 feet
White Birch	5"	N47°W	76.83 feet
Steel sign post		Southeast	3.0 feet

Stock No. 26273

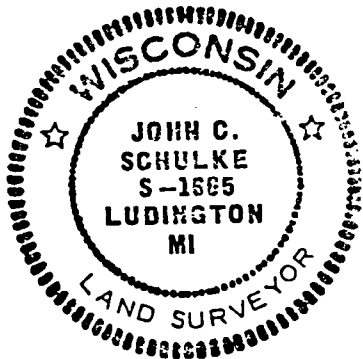
Sheet 7 of 7

SURVEYOR'S AFFIDAVIT

State of Wisconsin)  
County of Forest )<sup>ss</sup>

I, John C. Schulke, a Cadastral Surveyor, and a Registered Land Surveyor in the State of Wisconsin, hereby certify that I have surveyed and subdivided Section 25, Township 37 North, Range 12 East, Fourth Principal Meridian, State of Wisconsin.

The plat map and survey notes herewith are a correct representation of the land surveyed and subdivided. I have surveyed and subdivided said section in accordance with the rules for the survey of the public lands and with the statutes of the State of Wisconsin.



John C. Schulke  
4604 South U.S.-31  
Ludington, MI 49431  
R.L.S. State of Wisconsin  
Date of Survey 1987  
Certificate S-1665

*John C. Schulke*  
Nov 12, 1987

Survey requested by: *Dave Steeg* 2/1/88  
District Ranger Date

