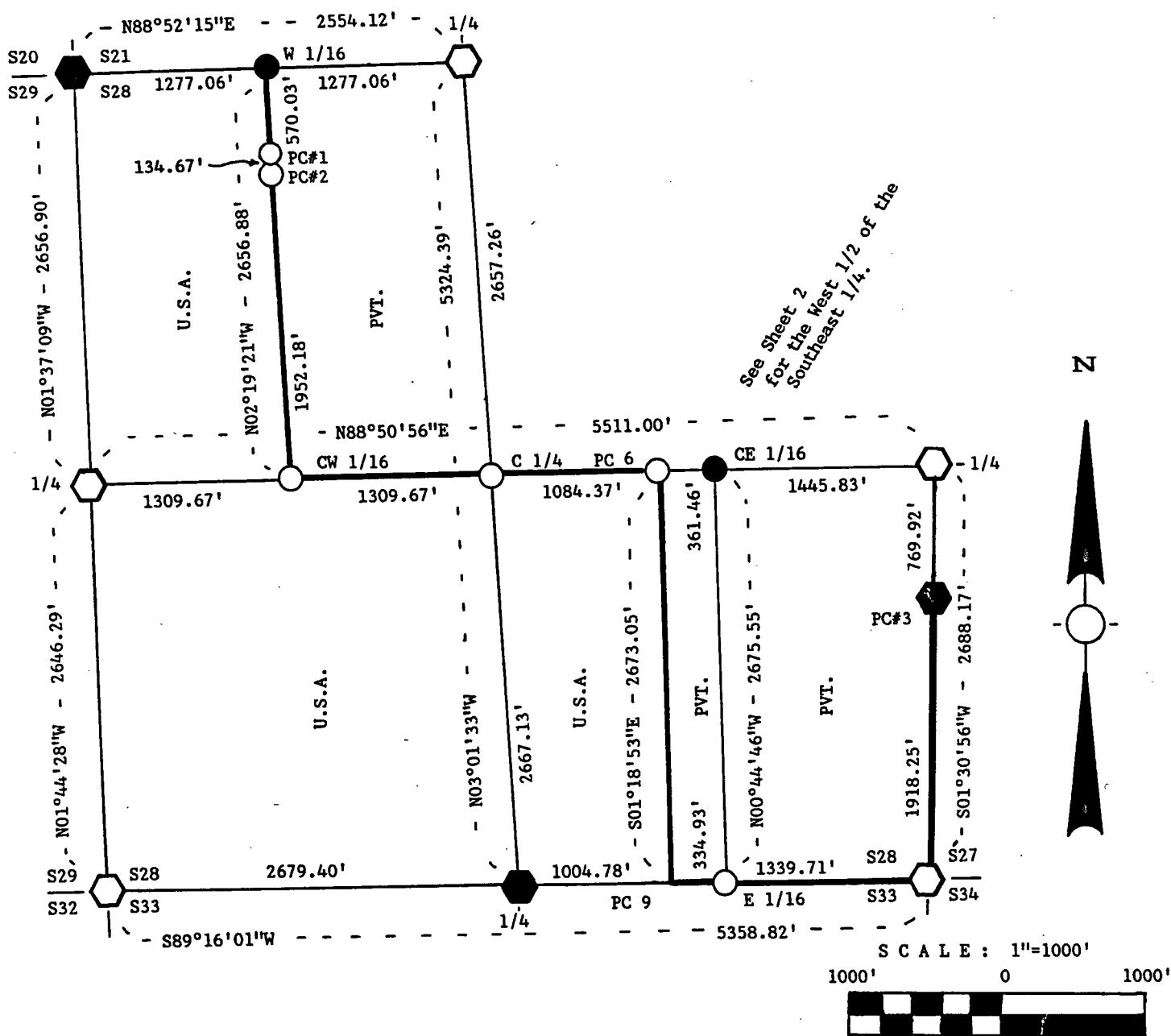


Stock No. 26273




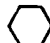

FOREST CO SURVEYOR
 FILE # 371228-19870413
 DATE _____ BY _____

PLAT OF SURVEY FOR CERTIFIED LAND CORNER RESTORATION AND ESTABLISHMENT OF U.S. GOVERNMENT LAND

BEING THE CORNERS FOR THE WEST 1/2 OF THE NORTHWEST 1/4,
 THE SOUTHWEST 1/4 AND THE WEST 3/4 OF THE WEST 1/2 OF THE SOUTHWEST 1/4.
 SECTION 28, T37N, R12E, FOURTH PRINCIPAL MERIDIAN
 FOREST COUNTY, STATE OF WISCONSIN



LEGEND





-  Boundary line marked to standard.
 -  1 inch diameter aluminum pipe monument, 36 inches long with an aluminum cap stamped to identify the corner.
 -  1 inch diameter aluminum pipe monument, 60 inches long with an aluminum cap stamped to identify the corner.
 -  2 1/2 inch diameter aluminum pipe monument, 36 inches long with an aluminum cap stamped to identify the corner.
 -  2 1/2 inch diameter aluminum pipe monument, 60 inches long with an aluminum cap stamped to identify the corner.
- NOTE: Bearings are reference to polaris observation.

Stock No. 26273

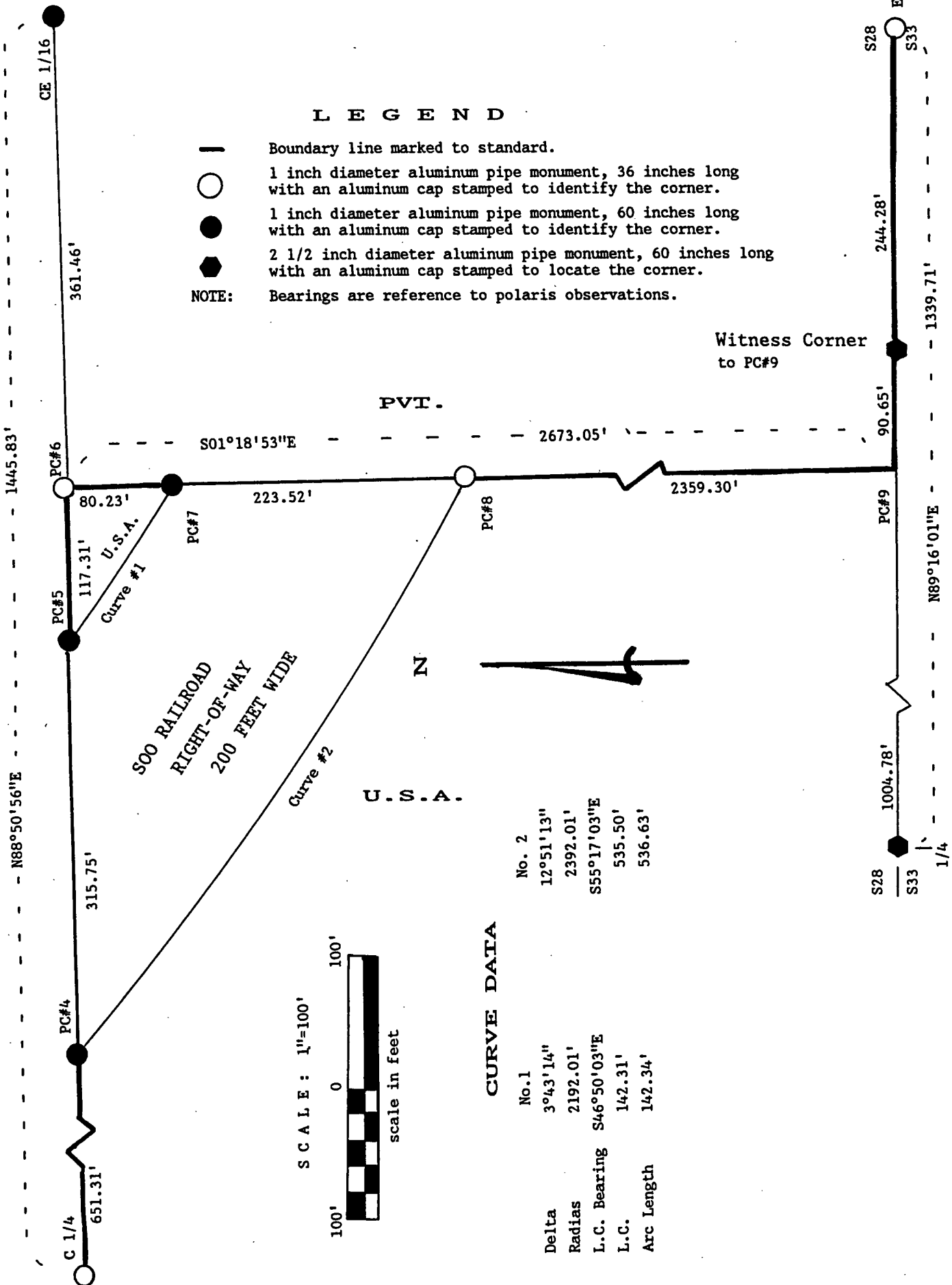
**PLAT OF SURVEY FOR CERTIFIED
LAND CORNER RESTORATION AND ESTABLISHMENT**

BEING THE CORNER FOR THE WEST 1/2 OF THE SOUTHEAST 1/4.
SECTION 28, T37N, R12E, FOURTH PRINCIPAL MERIDIAN
FOREST COUNTY, STATE OF WISCONSIN

L E G E N D

-  Boundary line marked to standard.
 -  1 inch diameter aluminum pipe monument, 36 inches long with an aluminum cap stamped to identify the corner.
 -  1 inch diameter aluminum pipe monument, 60 inches long with an aluminum cap stamped to identify the corner.
 -  2 1/2 inch diameter aluminum pipe monument, 60 inches long with an aluminum cap stamped to locate the corner.
- NOTE: Bearings are reference to polaris observations.

Witness Corner
to PC#9



PVT.

SOO RAILROAD
RIGHT-OF-WAY
200 FEET WIDE

U.S.A.

N



SCALE: 1"=100'



scale in feet

CURVE DATA

	No. 1	No. 2
Delta	3°43'14"	12°51'13"
Radius	2192.01'	2392.01'
L.C. Bearing	S46°50'03"E	S55°17'03"E
L.C.	142.31'	535.50'
Arc Length	142.34'	536.63'

Stock No. 26273

Sheet 3 of 7

SURVEY NOTES

This survey was made by John C. Schulke, a Registered Land Surveyor in the State of Wisconsin, for the U.S. Department of Agriculture, Forest Service. The purpose of the survey was for recovery, establishing, marking and perpetuating the corners and boundary lines of the U.S. Government Land on the perimeter and within Section 28, Township 37 North, Range 12 East, Fourth Principal Meridian, Forest County, Wisconsin.

The original Government survey of the township boundary was done by Alfred Millard, U.S. Deputy Surveyor, in May and June of 1858. The original Government subdivision survey of this township was done by William E. Daugherty in 1859.

The bearings between corner positions are true bearings as determined by reference to polaris observations. The accuracy of this survey exceeds the State requirement for closure of 1 in 3,000. Corners recovered or established by this survey are marked as described in the map legend. Each monumented corner is referenced to blazed, scribed, painted and tagged bearing trees. Tie bearings are magnetic, and not corrected for declination.

CORNERS RECOVERED AND RESTORED1. Section Corner Common to Sections 20, 21, 28 and 29.

Recovered evidence of GLO bearing trees. The location of these trees places the corner in the same location as the railroad surveys.

Corner references recovered:

Decayed Cedar stump		N40°E	33.0	feet
Decayed Cedar stump		S64°W	11.9	feet

Corner references:

Black Ash	8"	N51°E	17.83	feet
Cedar	8"	S71°E	23.83	feet
Black Ash	10"	S15°W	29.05	feet
Cedar	5"	N43°W	23.86	feet
Steel sign post		Northeast	0.8	feet

2. Quarter Corner Between Sections 21 and 28.

Recovered a 3/4 inch diameter iron pipe at the corner. Accepted iron pipe for the corner position and replaced it with an aluminum monument.

Corner references:

Red Maple	16"	N72°W	60.27	feet
Sugar Maple	7"	S28°W	35.18	feet
Red Maple	10"	S40°E	2.0	feet
SW corner of house		N18°E	34.85	feet
Steel sign post		Southeast	0.7	feet

3. Meander Corner Between Sections 21 and 28.

Found evidence of a scribed wood post with 1" dia. iron pipe at the corner. Accepted iron pipe for the corner position and replaced it with an aluminum monument. The shore line is East 3.1 feet from the monument. The Southeast corner of a garage is N45°W 15.46 feet from the monument.

Corner references:

Hemlock	8"	S07°E	41.16	feet
Hemlock	8"	S40°W	8.10	feet
Hemlock	9"	S86°W	9.87	feet
Sugar Maple	20"	S69°W	33.74	feet
Steel sign post		Southwest	2.1	feet

Stock No. 26273

Sheet 4 of 7

4. Meander Corner Between Sections 27 and 28.

Found evidence of a post hole. The location for the area of search was arrived from retracing the adjacent meanders of Pine Lake to the east and west. Lakeshore is due North 34.0 feet from the monument and recovered a one inch diameter iron pipe N48°E 21.91 feet from the monument.

Corner references recovered:

Hemlock stump hole		S62°W	5.3	feet
Stump hole		S64°E	5.9	feet

Corner references:

White Birch	8"	N79°E	25.78	feet
White Birch	7"	S20°E	17.42	feet
White Birch	5"	N68°W	33.15	feet
Aspen	12"	N10°W	7.01	feet
Steel sign post		Southwest	1.1	feet

5. Quarter Corner Between Sections 27 and 28.

Found evidence of a post hole.

Corner references recovered:

Red Oak	37"	N38°W	13.2	feet
Hemlock stump hole		N78°E	5.3	feet

Corner references:

Red Maple	7"	N06°E	35.52	feet
Twin Red Maple	4"	S11°E	15.12	feet
Hemlock	20"	N72°E	9.96	feet
Steel sign post		West	0.7	feet

6. Section Corner Common to Sections 27, 28, 33 and 34.

Found part of a post and the post hole.

Corner references:

Cedar	12"	S60°E	16.66	feet
White Birch	4"	S26°W	22.96	feet
White Pine	18"	N82°W	21.62	feet
Red Maple	6"	N30°E	21.91	feet
Steel sign post		Southeast	0.5	feet

7. Quarter Corner Between Sections 28 and 33.

Restored by proportionate measurement.

Corner references:

Black Ash	8"	S88°E	19.07	feet
Black Ash	11"	S32°E	13.40	feet
Cedar	13"	S49°W	32.80	feet
Black Ash	13"	N49°W	22.45	feet
Steel sign post		Southeast	1.1	feet

8. Section Corner Common to Sections 28, 29, 32 and 33.

Restored by proportionate measurement. Center of the Forest Service road is N30°W 75 feet.

Corner references:

"X" on boulder	8'X6'X5' high	N31°W	31.30	feet
Iron wood	4"	S25°W	76.22	feet
White Spruce	5"	N25°E	63.90	feet
Twin Red Maple	6"	N18°W	101.35	feet
Steel sign post		Southeast	1.2	feet

Stock No. 26273

Sheet 5 of 7

9. Quarter Corner Between Sections 28 and 29.

Found post hole and two hemlock stumps which fits the GLO notes.

Corner references recovered:

Hemlock stumps		N69°E	5.9	feet
Hemlock stumps		N63°W	2.6	feet

Corner references:

Sugar Maple	4"	S43°W	29.63	feet
Sugar Maple	8"	N18°W	31.52	feet
Sugar Maple	8"	N40°E	30.23	feet
Sugar Maple	5"	S77°E	41.25	feet
Steel sign post		South-SW	1.0	feet

CORNERS ESTABLISHED1. West Sixteenth Corner Between Sections 21 and 28.

Corner position is established at the midpoint and on line between the Northwest Section corner and the North Quarter corner of Section 28. A square wood post is N84°W a distance of 11.5 feet

Corner references:

Cedar	6"	S35°E	8.77	feet
Cedar	6"	N16°W	20.47	feet
White Birch	7"	S79°W	21.48	feet
Steel sign post		Northwest	1.0	feet

2. Property Corner Number 1 of Section 28.

Corner position is established at the intersection of the West Sixteenth line with the North right-of-way of the Soo Railroad.

Corner references:

White Birch	11"	S67°E	35.44	feet
Balsam	6"	N37°E	9.35	feet
Red Maple	5"	N48°W	21.51	feet
Steel sign post		Northwest	0.9	feet

3. Property Corner Number 2 of Section 28.

Corner position is established at the intersection of the West Sixteenth line with the South right-of-way of the Soo Railroad.

Corner references:

Balsam	6"	N14°W	16.56	feet
Cedar	10"	S72°E	17.69	feet
Maple	6"	S08°W	7.60	feet
Steel sign post		Southwest	0.6	feet

4. Center West Sixteenth Corner of Section 28.

Corner position is established at the midpoint and on line between the West Quarter corner and the Center Quarter corner of Section 28.

Corner references:

White Pine	12"	N23°W	48.28	feet
Red Maple	16"	N02°E	50.49	feet
Red Maple	6"	N50°E	54.95	feet
Steel sign post		Southwest	1.3	feet

Stock No. 26273

Sheet 6 of 7

5. Center Quarter Corner of Section 28.

Corner position is established at the intersection of the straight lines between opposing Quarter corners on the perimeter of Section 28.

Corner references:

Black Cherry	5"	S59°W	25.46 feet
Tamarack	12"	S44°E	71.09 feet
Aspen	6"	N04°W	20.34 feet
Steel sign post		Southwest	1.0 feet

6. Center East Sixteenth Corner of Section 28.

Corner position is established at the midpoint and on line between the East Quarter Corner and the Center Quarter corner of Section 28. Center of Pine Lake road is Southwest 87 feet and the lake shore is North 80 feet from the monument.

Corner references:

Aspen	7"	N35°E	17.77 feet
White Birch	4"	S57°E	45.64 feet
Balsam	8"	S42°W	42.88 feet
Steel sign post		Northwest	1.2 feet

7. Property Corner Number 4 of Section 28.

Corner position is established at the intersection of the East-West Quarter line and Southwesterly right-of-way of the Soo Railroad.

Corner references:

Twin Red Maple	7"	N21°E	62.36 feet
Twin Balsam	4"	N46°E	70.21 feet
Triple Wh. Birch	14"	S86°E	72.71 feet
Steel sign post		West-SW	1.0 feet

8. Property Corner Number 5 of Section 28.

Corner position is established at the intersection of the East-West Quarter line and the Northeasterly right-of-way of the Soo Railroad.

Corner references:

White Birch	7"	N13°W	30.15 feet
Red Maple	5"	S68°E	50.03 feet
Red Maple	6"	S20°W	25.39 feet
Steel sign post		East	0.8 feet

9. Property Corner Number 6 of Section 28.

Corner position is established on the straight line between the Center East Sixteenth corner and the Center Quarter corner, a fourth of the distance West of the Center East Sixteenth.

Corner references

Red Maple	10"	S60°E	36.36 feet
Red Maple	7"	S44°W	34.98 feet
Red Maple	13"	N40°W	26.65 feet
Steel sign post		Southwest	0.9 feet

10. Property Corner Number 7 of Section 28.

Corner position is established at the intersection of the North right-of-way of the Soo Railroad with the straight line between PC #6 and PC #9.

Corner references:

Red Maple	6"	N85°W	59.91 feet
Red Maple	6"	S01°E	48.20 feet
Twin Red Maple	5"	N33°E	48.98 feet
Steel sign post		North	0.8 feet

Stock No. 26273

Survey requested by:

Dale B. Staeger
District Ranger*2/1/88*
Date

Sheet 7 of 7

11. Property Corner Number 8 of Section 28.

Corner position is established at the intersection of the South right-of-way of the Soo Railroad with the straight line between PC #6 and PC #9.

Corner references:

White Birch	13"	S24°E	34.60 feet
Red Maple	4"	S89°W	18.61 feet
Cedar	8"	N06°E	33.03 feet
Steel sign post		Southwest	0.9 feet

12. Witness corner to Property Corner Number 9 of Sections 28 and 33.

Corner position is established on the South line of Section 28, N89°16'E a distance of 90.65 feet from the computed position for Property Corner #9. The computed position is three fourths the distance from the South Quarter corner of Section 28 to the East Sixteenth corner of Sections 28 and 33.

Corner references:

Spruce	8"	N23°W	39.90 feet
Spruce	12"	N78°E	29.97 feet
Twin Red Maple	12"	S66°E	60.77 feet
Steel sign post		West	1.0 feet

13. East Sixteenth Corner Between Sections 28 and 33.

Corner position is established at the midpoint and on line between the South Quarter corner and the Southeast Section corner of Section 28.

Corner references:

Cedar	9"	N04°W	31.10 feet
Spruce	8"	N64°E	27.62 feet
Cedar	13"	S82°W	24.01 feet
Steel sign post		East	1.0 feet

14. Property Corner Number 3 Between Sections 27 and 28.

Corner position is established at the intersection of the East line of Section 28 with the South right-of-way of the Soo Railroad.

Corner references:

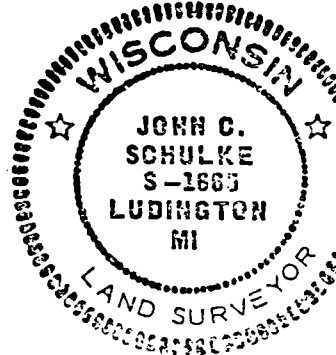
White Birch	7"	S12°W	14.84 feet
Tamarack	4"	N13°E	17.39 feet
Balsam	6"	S67°E	6.84 feet
Steel sign post		Southeast	1.0 feet

SURVEYOR'S AFFIDAVIT

State of Wisconsin)
County of Forest)^{ss}

I, John C. Schulke, a Cadastral Surveyor, and a Registered Land Surveyor in the State of Wisconsin, hereby certify that I have surveyed and subdivided Section 28, Township 37 North, Range 12 East, Fourth Principal Meridian, State of Wisconsin.

The plat map and survey notes herewith are a correct representation of the land surveyed and subdivided. I have surveyed and subdivided said section in accordance with the rules for the survey of the public lands and with the statutes of the State of Wisconsin.

*John C. Schulke*

Apr. 13, 1987

John C. Schulke
4604 South U.S-31
Ludington, MI 49401
R.L.S. State of Wisconsin
Date of Survey 1987
Certificate S-1665

