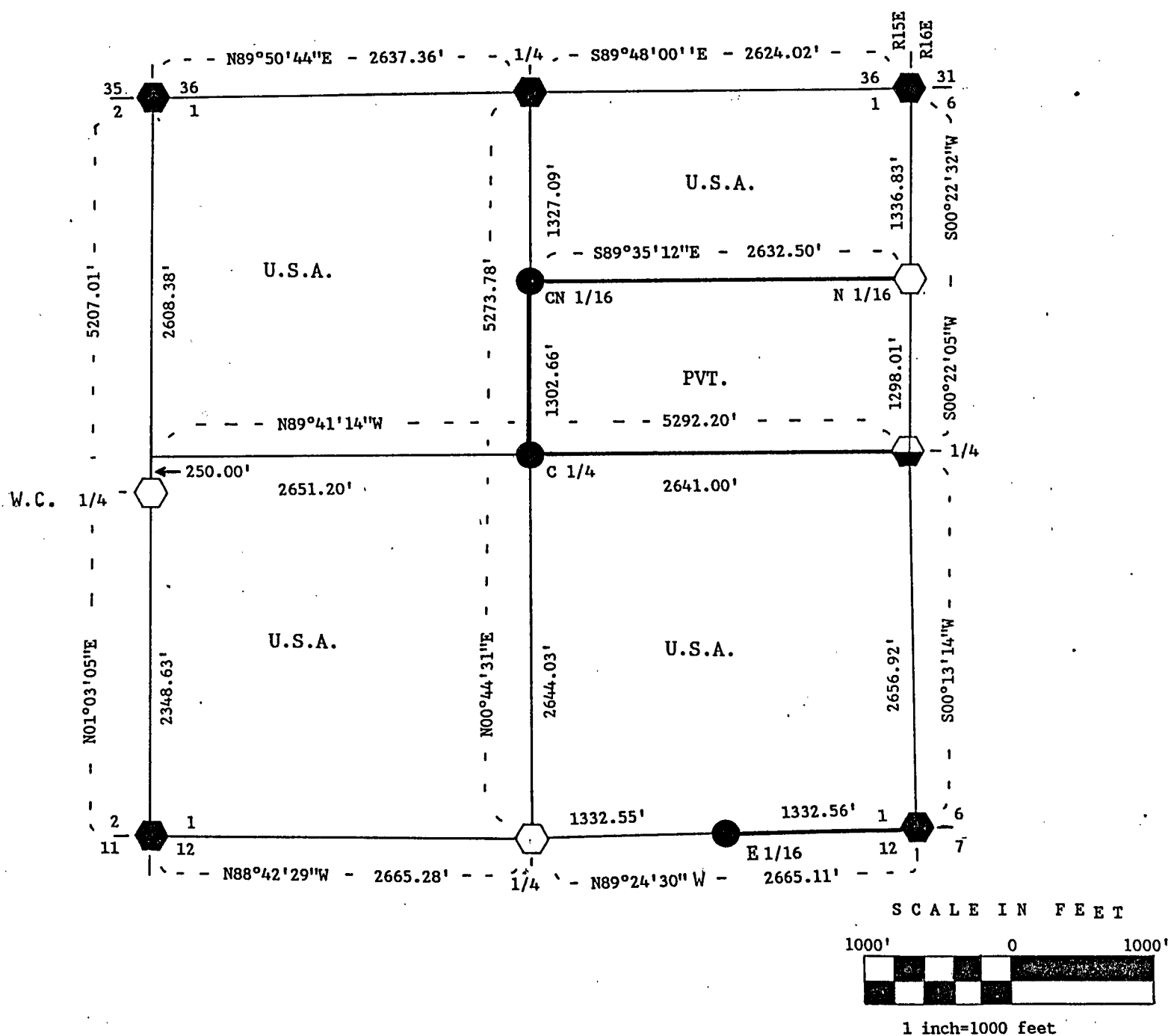


Stock No. 26273

PLAT OF SURVEY FOR CERTIFIED LAND CORNER RESTORATION AND ESTABLISHMENT OF U.S. GOVERNMENT LAND

BEING THE CORNERS FOR THE NW 1/4, THE SW 1/4, THE N 1/2
OF THE NE 1/4 AND THE SE 1/4.
SECTION 1, T37N, R15E, FOURTH PRINCIPAL MERIDIAN
FOREST COUNTY, STATE OF WISCONSIN



— Boundary line marked to standard.



2 1/2" diameter aluminum pipe monument, 30" or 36" long with an aluminum cap stamped to identify the corner.



1" diameter aluminum pipe monument, 60 inches long with an aluminum cap stamped to identify the corner.



2 1/2" diameter galvanized iron pipe monument, 60" long with a brass cap stamped to identify the corner.



2 1/2" diameter galvanized iron pipe monument, 36" long with a brass cap stamped to identify the corner.

NOTE: Bearings are referenced to a certified survey of Section 36, T38N, R15E by Bill Cochran (RLS-1107) dated 1985.

Stock No. 26273

sheet 2 of 4

Survey Notes

This survey was made by John E. Schulke, a Registered Land Surveyor in the State of Wisconsin, for the U.S. Department of Agriculture, Forest Service. The purpose of the survey was for recovery, establishing, marking and perpetuating the corners and boundary lines of the U.S. Government Land on the perimeter and within Section 01, Township 37 North, Range 15 East, Fourth Principal Meridian, Forest County, Wisconsin.

The original Government survey of the township boundary was done by Artemas Curtis in 1857. The original Government subdivision survey of this township was done by J. L. Nowlin in 1865.

The bearings between corner positions are based on the grid bearings of the Survey, Township 38 North, Range 15 East, by William Cochrane (RLS-1107) in 1985. The accuracy of this survey exceeds the State requirement for closure of 1 in 3,000. Corners recovered or established by this survey are marked as described in the map legend. Each monumented corner is referenced to blazed, scribed, painted and tagged bearing trees. Tie bearings are magnetic, and corrected for declination.

CORNERS RECOVERED AND RESTORED

1. Section Corner Common to Sections 1, 2, 35 and 36.
Corner monument recovered in place and as described on the U.S. Public Land Survey Monument Record form in the Forest County Register's Office, Document #127870, in April 1985 by William Cochrane (RLS-1107).
2. Quarter Corner Between Sections 1 and 36.
Corner monument recovered in place and as described on the U.S. Public Land Survey Monument Record form in the Forest County Register's Office, Document #127871, in April 1985 by William Cochrane (RLS-1107).
3. Section Corner Common to Sections 1, 6, 31 and 36.
Corner monument recovered in place and as described on the U.S. Public Land Survey Monument Record form in the Forest County Register's Office, Document #127872, in April 1985 by William Cochrane (RLS-1107).
4. Quarter Corner Between Sections 1 and 6.
Corner monument recovered in place and as described on the Certified Land Corner Restoration form in the Forest County Register's Office, in Sept. 1973 by Jean F. Resvick (RLS-802).
5. Section Corner Common to Sections 1, 6, 7 and 12.
Corner monument recovered in place and as described on the Certified Land Corner Restoration form in the Forest County Register's Office, in Nov. 1972 by Jean F. Resvick (RLS-802).
6. Quarter Corner Between Sections 1 and 12.
Corner monument recovered in place and as described on the Certified Land Corner restoration form in the Forest County Register's Office, Document #124205, in October 1981 by Milo E. Stefan (RLS-1558).
7. Section Corner Common to Sections 1, 2, 11 and 12.
Corner monument recovered in place and as described on the Certified Land Corner Restoration form in the Forest County Register's Office, Document #124207, in 1983 by Milo E. Stefan (RLS-1558).

Stock No. 26273

sheet 3 of 4

8. Witness Quarter Corner Between Sections 1 and 2.

Corner position restored by proportionate measurement. Witness corner set S01°03'W a distance of 250.00 feet from the computed position.

Corner references:

Balsam	11"	N72°E	5.30 feet
Black cherry	5"	S80°E	27.15 feet
Red Maple	6"	S14°E	27.36 feet
White Pine	28"	S66°W	33.48 feet
Steel sign post		Southeast	0.8 feet

9. North Sixteenth Corner Between Sections 1 and 6.

Corner monument recovered in place and as described on the Plat of Survey sheets in the Forest County Register's Office, in July 1982 by Kim H. Pritzloff (RLS-1259).

CORNERS ESTABLISHED1. Center North Sixteenth Corner of Section 1.

Corner position is established by proportionate measurement on line between the North Quarter corner and the Center Quarter corner of Section 1. A wood square post was recovered N33°E a distance of 16 feet from the monument.

Corner references:

Hemlock	5"	N46°E	24.60 feet
Hemlock	8"	S60°E	29.02 feet
Hemlock	5"	S68°W	25.48 feet
Steel sign post		East	0.7 feet

2. Center Quarter Corner of Section 1.

Corner position is established at the intersection of a straight lines between opposing Quarter corners on the perimeter of Section 1. The center of a two track is N29°W a distance of 58.5 feet. The center of the two track between the gate posts is N71°W a distance of 78.0 feet from the monument.

Corner references:

Maple	3"	N29°W	32.88 feet
Maple	12"	S89°W	40.98 feet
Ironwood	6"	S26°E	15.87 feet
Steel sign post		West	0.6 feet

3. East Sixteenth Corner Between Sections 1 and 12.

Corner position is established at the midpoint and on line between the South Quarter corner and the Southeast Section corner of Section 1. A wood square post is S48°W a distance of 3.1 feet from the monument.

Corner references:

Black spruce	4"	S34°W	30.80 feet
Spruce	3"	N37°W	18.16 feet
Spruce	3"	N80°E	25.03 feet
Steel sign post		Northwest	1.0 feet

Stock No. 26273

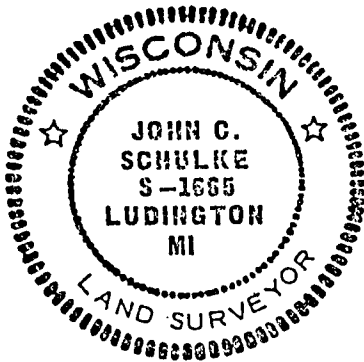
sheet 4 of 4

SURVEYOR'S AFFIDAVIT

State of Wisconsin)
County of Forest)^{ss}

I, John C. Schulke, a Cadastral Surveyor, and a Registered Land Surveyor in the State of Wisconsin, hereby certify that I have surveyed and subdivided Section 1, Township 37 North, Range 15 East, Fourth Principal Meridian, State of Wisconsin.

The plat map and survey notes herewith are a correct representation of the land surveyed and subdivided. I have surveyed and subdivided said section in accordance with the rules for the survey of the public lands and with the statutes of the State of Wisconsin.



John C. Schulke
4604 South U.S.-31
Ludington, MI 49431
R.L.S. State of Wisconsin
Date of Survey 1987
Certificate S-1665

John C Schulke
October 26, 1987

Plat Ready For Filing

David S. Stange
District Ranger

