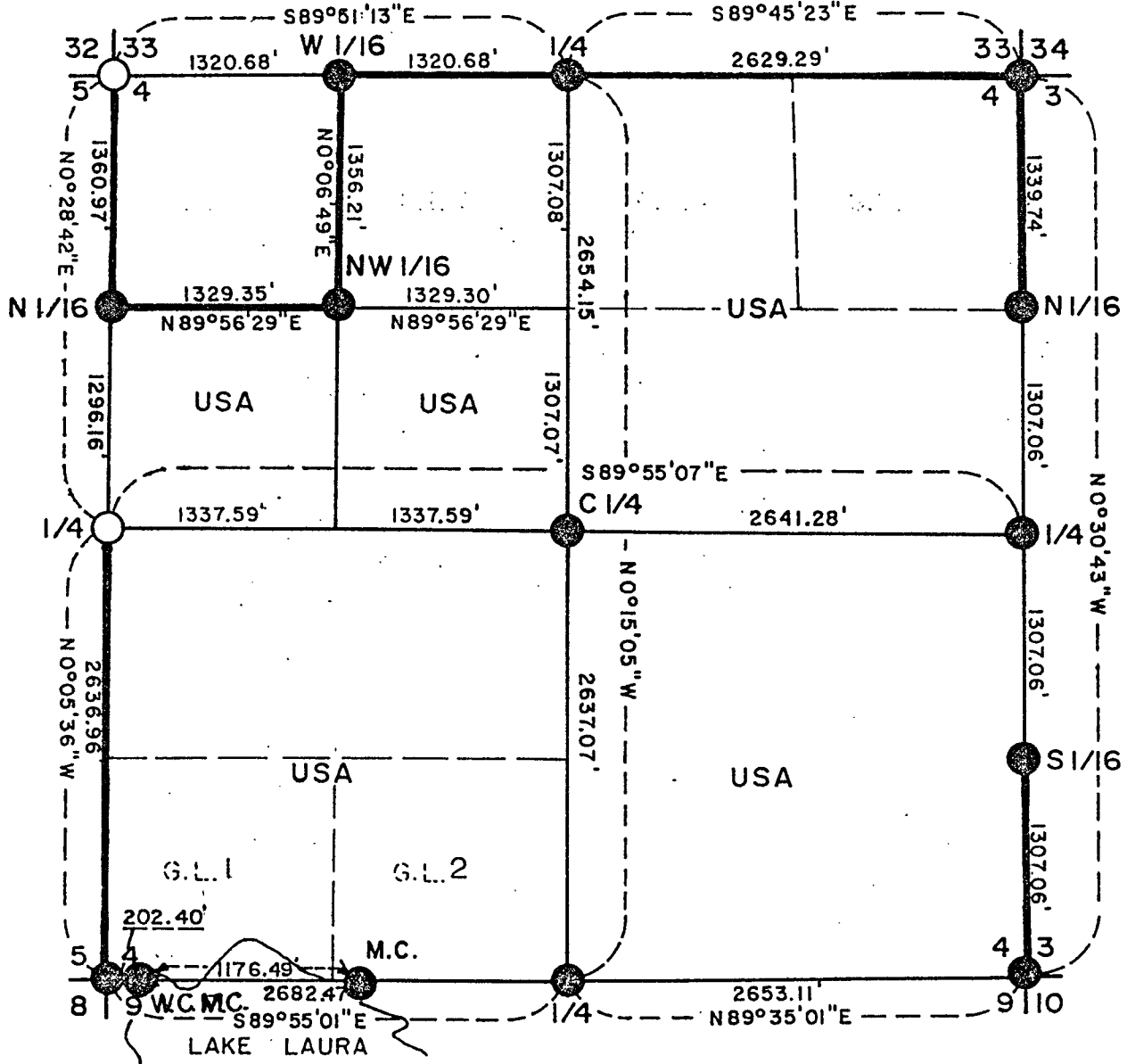


PLAT OF SURVEY U.S. GOVERNMENT LAND

Being NE1/4, SE1/4, SW1/4, E1/2 NW 1/4, and SW1/4 NW1/4 all in Section 4,
Township 37 North, Range 16 East, Fourth Principal Meridian.
FOREST COUNTY, WISCONSIN



LEGEND

- = 2" Driveable Aluminum Berntsen monument set.
- = 2" iron pipe with brass cap found in place.
- USA = U.S. Government land ——— = U.S. Boundary line

CONVERSION FACTORS
Feet to Meters - 0.3048
Meters to Feet - 3.2808

Stock No. 26273

Sheet 2 of 5

SURVEY NOTES

This survey was made by the U.S. Department of Agriculture, Forest Service, for the purpose of establishing, marking and perpetuating the corners and boundary lines of the U.S. Government land on the perimeter and within Section 4, Township 37 North, Range 16 East of the Fourth Principal Meridian, Forest County, Wisconsin as shown on the plat map herewith.

The original Government subdivision of this township was made by James McBride in 1859. Surveys of the township boundary were performed by Artemas Curtis in 1857. A large landholder in the area, the Universal Oil Company, had records of some of the corners to be used but the records were destroyed by fire.

The corner positions recovered and established by this survey are monumented by monuments described in the map legend.

The bearings between corner positions are true bearings as determined by solar observation near the NW corner of Section 6 and the NE corner of Section 3. The relative accuracy of the control traverse for corner establishment was one part on 10,000. The field measurements were done using a Wild T-2 theodolite and a Beetle 1600 infrared distance meter. The field notes and a copy of the plat of survey are on file in the Forest Supervisor's office in Rhinelander, Wisconsin.

Corners Recovered and Restored

1. Section Corner to Sections 4 and 5, T37N, R16E and Sections 32 and 33 of T38N, R16E.

Recovered and monumented in 1974 and recorded as document number 106872 by Jean Resvick R.L.S.-802.

Spruce 3"	N 67°E	9.07 feet
Spruce 8"	S 38°E	13.04 feet
Spruce 6"	S 51°W	16.07 feet
Spruce 4"	N 55°W	12.38 feet
Sign Post	North	0.50 feet

2. Section Corner to Sections 3 and 4, T37N, R16E and Sections 33 and 34 of T38N, R16E.

Corner recovered marked by a 3" squared post which fell within tolerances of the single proportioned point.

Cherry 6"	S 16°E	30.35 feet
Basswood 14"	S 08°E	61.26 feet
Maple 10"	S 82°W	43.15 feet
Cherry 8"	N 32°W	34.71 feet
Sign Post	Southwest	1.10 feet

3. Section Corner to Sections 3-4-9-10, T37N, R16E.

Corner was restored using as best available evidence, a pickett found 24" beneath surface vegetation and three feet west of a four sided blazed Spruce Tree. Swamp call to the south of 5 chains fit this position. During surveys to the west of this Section, corner positions fell within 6 feet of the four sided blazed trees we found. These trees were blazed as part of the Universal Oil Co. Corner recovery program of their own surveyors.

Tamarack 5"	N 52°W	43.28 feet
Tamarack 6"	N 72°E	49.90 feet
Tamarack 5"	S 41°E	19.42 feet
W. Pine 6"	S 52°W	68.45 feet
Sign Post	S 22°W	1.36 feet

Stock No. 26273

Sheet 3 of 5

4. Section Corner to Sections 4-5-8-9, T37N, R16E.

Corner recovered from the location of three original bearing tree stumps and swamp call to the south of 0.60 chains and lake call to the east of 3.35 chains. The Hemlock 10" N 64 W 40 lks, Hemlock 36" N 24 E 30 lks, and the Hemlock 12" S 64 W 50 lks were all rotted but evident in position. The Spruce 8" S77W 200 lks from the Meander corner on the west side of the lake was also found and used to help verify the other stumps.

Maple 6"	S 12°W	6.14 feet
Y. Birch 10"	S 49°W	26.94 feet
Maple 8"	N 34°W	45.38 feet
Y. Birch 4"	N 45°E	22.81 feet
Sign Post	South	1.50 feet

5. Quarter Corner to Sections 4, T37N, R16E, and 33, T38N, R16E.

Corner position recovered with a 3" post point found under a 4" Spruce tree which fell within 1.50 feet of the single proportioned position for this corner.

Cedar 9"	S 80°E	13.98 feet
Cedar 8"	N 25°E	26.15 feet
Sign Post	South	1.65 feet
Forest Service Tag	N 20°W	21.50 feet

6. Quarter Corner to Sections 3 and 4, T37N, R16E.

Corner position restored by using single proportionate measurement between the NW and SW corners of Section 3.

Tamarack 4"	S 09°E	80.78 feet
Spruce 5"	N 30°E	91.40 feet
Sign Post	West	1.20 feet

7. Quarter Corner to Sections 4 and 9, T37N, R16E.

Corner position recovered using the two Bearing trees found at the corner position. A 14" Hemlock Stump was located N 36 W 43 lks and the 12" Hemlock stump was located S 25 E 38 lks. A Maple tree was blazed and used to witness the SE bearing tree. The SE bearing tree distance could be mistaken for 33 lks, but the 38 lk distance fit the other BT and the swamp call east.

Maple 7"	S 68°E	12.96 feet
Maple 8"	S 02°W	24.81 feet
Sign Post	S 45°W	2.00 feet

8. Quarter Corner to Sections 4 and 5, T37N, R16E.

Recovered and monumented in 1973 and recorded as document number 105098 by Jean Resvick R.L.S. -802

Spruce 4"	N 15°E	12.18 feet
Spruce 4"	S 17°W	7.37 feet
Sign Post	NE	1.00 feet

9. North One Sixteenth Corner between Sections 4 and 5, T37N, R16E.

Corner established by single proportionate measurement between the NW and W $\frac{1}{2}$ corners of Section 4.

Spruce 5"	N 84°W	58.95 feet
Balsam Fir 9"	S 65°W	88.94 feet
Sign Post	West	1.15 feet

Stock No. 26273

Sheet 4 of 5

10. North-West One Sixteenth Corner of Section 4, T37N, R16E.

Corner was established by straight line intersection between opposite sixteenth corners on the periphery of the NW $\frac{1}{4}$ of Section 4.

Balsam Fir 8"	S 10°E	16.91 feet
Balsam Fir 8"	N 7 $\frac{1}{4}$ °E	25.27 feet
Sign Post	S 19°E	1.58 feet

11. West One Sixteenth Corner between Section 4, T37N, R16E and Section 33, T38N, R16E.

Corner position was established midway and on line between the northwest and the north quarter corners of Section 4.

Spruce 4"	S 30°E	13.25 feet
Spruce 5"	S 6 $\frac{1}{4}$ °W	3.20 feet
Sign Post	S 40°E	1.30 feet

12. North One Sixteenth Corner between Sections 3 and 4, T37N, R16E.

Corner position was established by single proportionate measurement between the NW and W $\frac{1}{4}$ corner of Section 3.

Balsam Fir 8"	N 10°W	28.37 feet
Maple 6"	N 32°E	28.88 feet
Sign Post	S 32°W	1.25 feet

13. South One Sixteenth Corner between Sections 3 and 4, T37N, R16E.

Corner position was established midway and on line between the SW and W $\frac{1}{4}$ corners of Section 3.

Tamarack 6"	S 58°W	98.21 feet
Tamarack 4"	S 88°E	47.50 feet
Sign Post	N 31°W	0.85 feet

14. Center One Quarter Corner of Section 4, T37N, R16E.

Corner position was established by straight line intersection between opposite quarter corners on the periphery of Section 4.

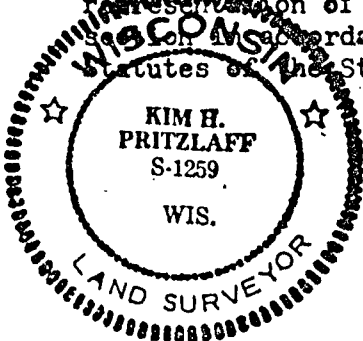
Balsam Fir 6"	N 39°E	9.14 feet
Balsam Fir 5"	S 15°E	12.51 feet
Sign Post	S 30°W	1.17 feet

(Corners Established continued on Sheet 5 of 5)

SURVEYOR'S AFFIDAVIT

State of Wisconsin)
County of Forest)ss

I, Kim H Pritzlaff, Land Surveyor with Aaron Associates of Oconto Falls, Wisconsin, and a Registered Land Surveyor in the State of Wisconsin hereby certify that I have surveyed and subdivided Section 4, Township 37 North, Range 16 East, Fourth Principal Meridian, Forest County, Wisconsin. The plat map and survey notes are a correct representation of the land surveyed and subdivided. I have surveyed and subdivided said land in accordance with the rules of the survey of the public lands and with the statutes of the State of Wisconsin.



Kim H. Pritzlaff

Kim H Pritzlaff, Aaron Associates
R.L.S. State of Wisconsin
Certificate Number 1259

Date of Survey: 1982

Stock No. 26273

Sheet 5 of 5

Corners Established (continued)

15. Witness Corner to Meander Corner on the West Side of Lake Laura between Sections 4 and 9, T37N, R16E.

Corner restored by single proportionate measurement between the SW and S $\frac{1}{4}$ corners of Section 4. Corner fell approximately 40 feet in the lake; so I set a Witness Corner 54.18 feet west with distance stamped on monument to actual Meander Corner.

Tamarack 3"	N 75 ⁰ W	52.95 feet
W. Pine 3"	S 49 ⁰ W	11.92 feet
Sign Post	West	0.90 feet

16. Meander Corner on the East Side of Lake Laura between Sections 4 and 9, T37N, R16E.

Corner restored by single proportionate measurement between the SW and S $\frac{1}{4}$ corners of Section 4.

Sugar 3"	N 08 ⁰ E	10.11 feet
Sugar 3"	N 34 ⁰ W	23.86 feet
Sign Post	South	2.00 feet



JUL 15 1982

Dora C. James