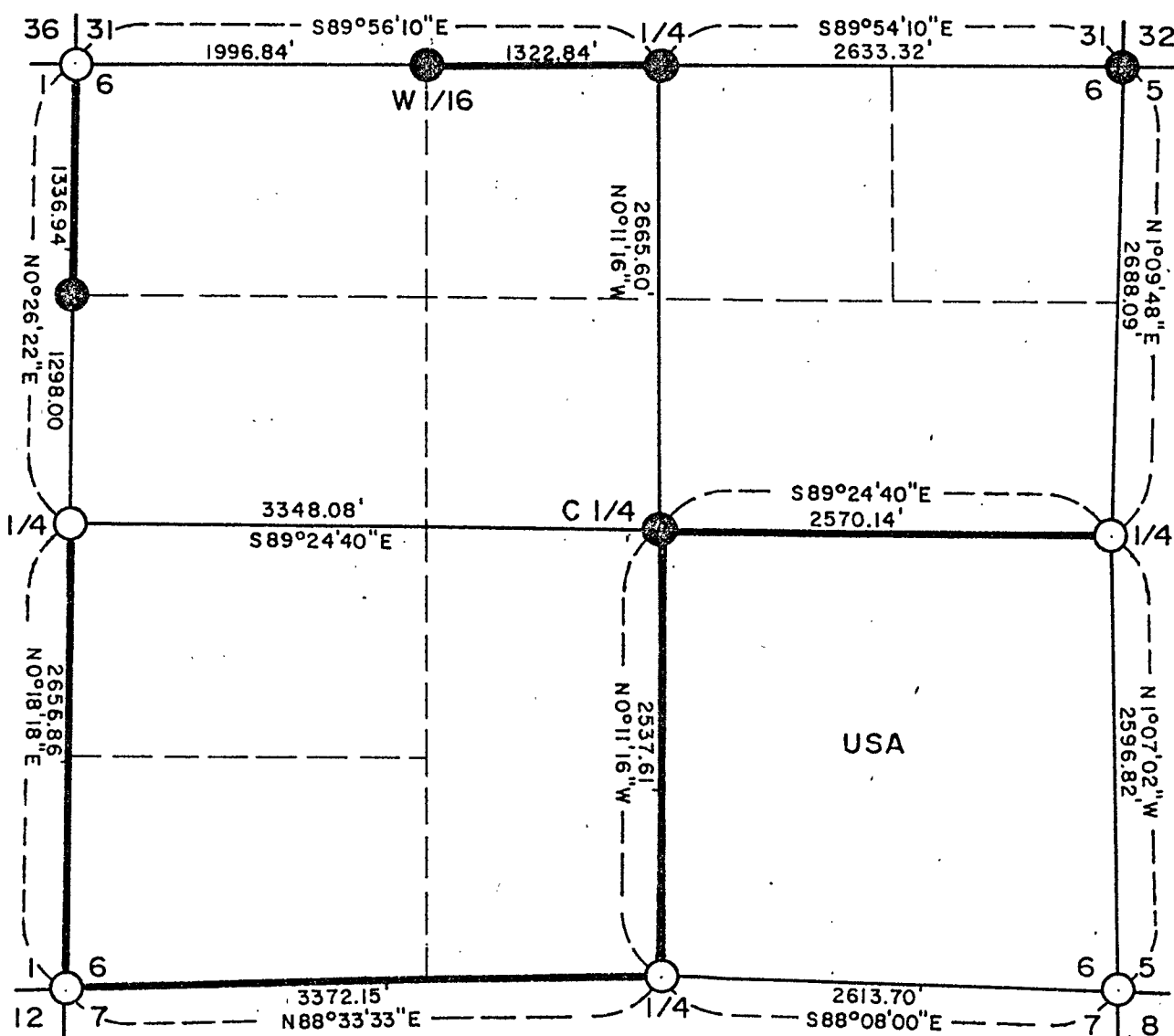
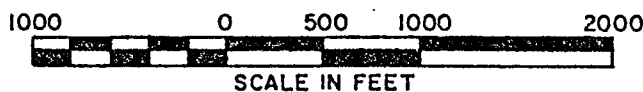


PLAT OF SURVEY U.S. GOVERNMENT LAND

Being SE 1/4 in Section 6
Township 37 North, Range 16 East, Fourth Principal Meridian
FOREST COUNTY, WISCONSIN



LEGEND

- = 2" Driveable Aluminum Berntsen monument set.
- = 2" iron pipe with brass cap found in place.
- USA = U.S. Government land — = U.S. Government boundary

CONVERSION FACTORS
Feet to Meters - 0.3048
Meters to Feet - 3.2808

Stock No. 26273

Sheet 2 of 4

SURVEY NOTES

This survey was made by the U.S. Department of Agriculture, Forest Service, for the purpose of establishing, marking and perpetuating the corners and boundary lines of the U.S. Government land on the perimeter and within Section 6, Township 37 North, Range 16 East, Fourth Principal Meridian, Forest County, Wisconsin as shown on the plat map herewith.

The original Government subdivision of the township was made by James McBride in 1859, and the township lines were surveyed by Atrems Curtis in 1857. Universal Oil Company had records of some of the corners which their surveyors had perpetuated in the 1930 to 1940 era, but these were lost to fires.

The corner positions recovered and established by this survey were monumented by monuments described in the map legend.

The bearings between corner positions are true bearings as determined by solar observation near the NW corner of Section 6 and again near the NE corner of Section 3. The relative accuracy of the control traverse for corner establishment was one part in 10,000. The field measurements were done with a Wild T-2 theodolite and a Beetle 1600 infrared distance meter. The field notes and a copy of the plat of survey are on file in the Forest Supervisor's office in Rhineland, Wisconsin.

CORNERS RECOVERED AND RESTORED.

1. Section Corner to Section 6, T37N, R16E; Section 1, T37N, R15E; Section 36, T38N, R15E; and Section 31, T38N, R16E.

Corner recovered and monumented in 1972 and recorded as document number 104441. by Jean Resvick R.L.S. 7802

| | | |
|-----------|--------|------------|
| Cedar 5" | N 55°E | 22.79 feet |
| Cedar 14" | S 65°E | 17.77 feet |
| Cedar 12" | S 73°E | 7.56 feet |
| Cedar 9" | N 14°W | 18.83 feet |
| Sign Post | SW | 1.00 feet |

2. Section Corner to Sections 5 and 6, T37N, R16E; and Sections 31 and 32, T38N, R16E.

Corner recovered and monumented as marked by two old 4"x 4" squared posts lying horizontally. The point was recovered and fell within 6 feet of the east west single proportionate position.

| | | |
|---------------|--------|------------|
| Cedar 8" | N 48°E | 52.28 feet |
| Balsam Fir 4" | S 55°E | 4.45 feet |
| Balsam Fir 6" | N 20°W | 23.70 feet |
| Sign Post | S 02°W | 1.60 feet |

3. Section Corner to Sections 5-6-7-8, T37N, R16E.

Corner recovered and monumented in 1973 and recorded as document number 105100. by Jean Resvick R.L.S. 7802

| | | |
|-----------|--------|------------|
| Cedar 10" | S 59°E | 7.94 feet |
| Cedar 8" | N 66°W | 16.08 feet |
| Sign Post | SE | 1.00 feet |

Stock No. 26273

Sheet 3 of 4

4. Section Corner to Section 6 and 7, T37N, R16E; and Sections 1 and 12, T 37N, R15E.

Corner recovered and monumented in 1972 and recorded as document number 102911. by Jean Resvick R.L.S.-802

| | | |
|--------------|--------|------------|
| Hemlock 13" | N 08°E | 38.03 feet |
| Y. Birch 14" | S 55°E | 13.30 feet |
| Y. Birch 5" | S 28°W | 50.82 feet |
| Hemlock 14" | N 23°W | 66.80 feet |
| Sign Post | SE | 1.00 feet |

5. Quarter Corner to Sections 6, T37N, R16E and 31, T38N, R16E.

Corner was marked by a 4" squared and scribed wood post from which the original bearing tree - Tamarack 8" S 19 W 26 lks was recovered. Corner position fell within 6 feet of single proportionate point.

| | | |
|-------------|--------|------------|
| Tamarack 8" | S 29°E | 43.15 feet |
| Spruce 8" | N 54°E | 67.71 feet |
| W. Pine 12" | N 01°W | 61.24 feet |
| Tamarack 8" | N 83°W | 21.40 feet |
| Sign Post | N 10°E | 3.10 feet |

6. Quarter Corner to Sections 5 and 6, T37N, R16E.

Corner was recovered and monumented in 1973 and recorded as document number 105097. by Jean Resvick R.L.S.-802

| | | |
|-----------|--------|------------|
| Cedar 8" | S 37°E | 26.98 feet |
| Cedar 11" | N 04°W | 31.55 feet |
| Sign Post | NW | 1.00 feet |

7. Quarter Corner to Sections 6 and 7, T37N, R16E.

Corner was recovered and monumented in 1973 and recorded as document number 105099. by Jean Resvick R.L.S.-802

| | | |
|-----------|--------|------------|
| Cedar 8" | S 78°E | 26.51 feet |
| Cedar 6" | S 57°E | 19.23 feet |
| Cedar 5" | S 29°W | 9.54 feet |
| Sign Post | SW | 1.00 feet |

8. Quarter Corner to Sections 6, T37N, R16E and 1, T37N, R15E.

Corner was recovered and monumented in 1973 and recorded as document number 104442. by Jean Resvick R.L.S.-802

| | | |
|-------------|--------|------------|
| Maple 7" | S 23°E | 32.34 feet |
| Y. Birch 6" | N 86°W | 47.35 feet |
| Sign Post | SW | 1.00 feet |

Corners Established9. West One Sixteenth Corner between Sections 6, T37N, R16E and 31, T38N, R16E.Corner position was established by single proportionate measurement between the NW and N $\frac{1}{4}$ corners of Section 6.

| | | |
|---------------|--------|------------|
| Balsam Fir 4" | N 64°E | 20.52 feet |
| Maple 6" | N 78°W | 28.33 feet |
| Sign Post | N 70°E | 1.00 feet |

Stock No. 26273

Sheet 4 of 4

10. North One Sixteenth Corner between Sections 6, T37N, R16E and 1, T37N, R15E.

Corner position was established by single proportionate measurement between the NW and W $\frac{1}{4}$ corners of Section 6.

| | | |
|----------------|--------|------------|
| Hemlock 8" | N 45°E | 18.40 feet |
| Balsam Fir 11" | N 07°E | 20.88 feet |
| Sign Post | N 60°W | 1.20 feet |

11. Center One Quarter Corner of Section 6, T37N, R16E.

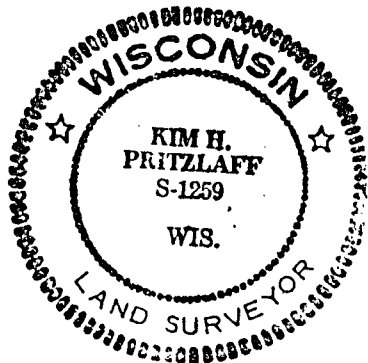
Corner position was established by straight line intersection between opposite quarter corners on the periphery of Section 6.

| | | |
|-----------|--------|------------|
| Maple 7" | S 18°E | 32.88 feet |
| Maple 7" | N 06°E | 7.51 feet |
| Sign Post | S 20°E | 1.30 feet |

SURVEYOR'S AFFIDAVIT

State of Wisconsin)
County of Forest)ss

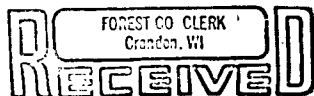
I, Kim H Pritzlaff, Land Surveyor with Aaron Associates of Oconto Falls, Wisconsin and a Registered Land Surveyor in the State of Wisconsin hereby certify that I have surveyed and subdivided Section 6, Township 37 North, Range 16 East, of the Fourth Principal Meridian, Forest County, Wisconsin. The plat map and survey are a correct representation of the land surveyed and subdivided. I have surveyed and subdivided said Section in accordance with the rules of the survey of the public lands and with the Statutes of the State of Wisconsin..



Kim H. Pritzlaff

 Kim H Pritzlaff, Aaron Associates
 R.L.S. State of Wisconsin
 Certificate Number 1259

Date of Survey: 1982



JUL 15 1982

Dora C. James