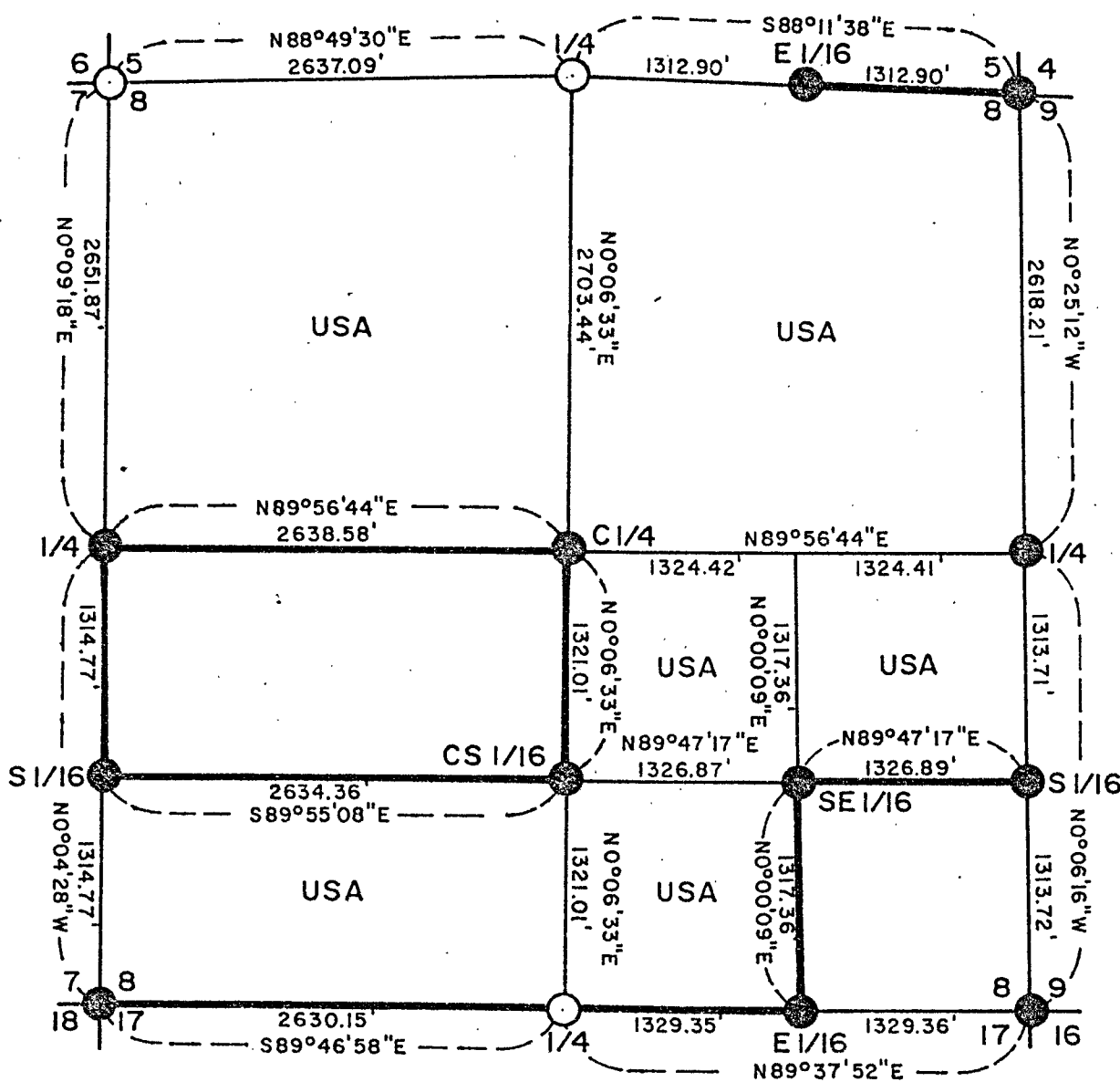
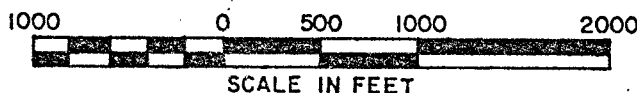


PLAT OF SURVEY U.S. GOVERNMENT LAND

Being NW1/4, NE1/4, N1/2 SE1/4, SW 1/4 SE1/4, and S 1/2 SW1/4 all in Section 8
Township 37 North, Range 16 East, Fourth Principal Meridian
FOREST COUNTY, WISCONSIN



LEGEND

- = 2" Driveable Aluminum Berntsen monument set.
- = 2" iron pipe with brass cap found in place.
- USA = U.S. Government land — = U.S. Government boundary

CONVERSION FACTORS

Feet to Meters - 0.3048
Meters to Feet - 3.2808

Stock No. 26273

Sheet 2 of 5

SURVEY NOTES

This survey was made by the U.S. Department of Agriculture, Forest Service for the purpose of establishing, marking and perpetuating the corners and boundary lines of the U.S. Government land on the perimeter and within Section 8, Township 37 North, Range 16 East, of the Fourth Principal Meridian, Forest County, Wisconsin as shown on the plat map herewith.

The original Government subdivision of the township was made by James McBride in 1859. Universal Oil Company had records of some of the corners which their surveyors had perpetuated in the 1930 to 1940 era, but these were lost to fires.

The corner positions recovered and established by this survey were monumented by monuments described in the legend on the map.

The bearings between corner positions are true bearings as determined by solar observations at the NW corner of Section 6 and near the NE corner of Section 3. The relative accuracy of the control traverse for corner establishment was one part in 10,000. The field measurements were done with a Wild T-2 theodolite and a Beetle 1600 infrared distance meter. The field notes and a copy of the plat of survey are on file in the Forest Supervisor's office in Rhinelander, Wisconsin.

Corners Recovered and Restored1. Corner to Sections 5-6-7-8, T37N, R16E.

Corner was recovered and monumented in 1973 and recorded as document no. 105100 by Jean Resvick R.L.S.-802.

Cedar 10"	S59°E	7.94 feet
Cedar 8"	N66°W	16.08 feet
Sign Post	Southeast	1.00 foot

2. Section Corner to Sections 4-5-8-9, T37N, R16E.

Corner recovered from the location of three original bearing tree stumps found, and swamp call to the south of 0.60 chains, and lake call to the east of 3.35 chains. The Hemlock 10" N64W 40 lks, the Hemlock 36" N24E 30 lks, and the Hemlock 12" S64W 50 lks were all rotted but evident in position and solid enough to identify.

Maple 6"	S12°W	6.14 Feet
Y. Birch 10"	S49°W	26.94 Feet
Maple 8"	N34°W	45.38 Feet
Y. Birch	N45°E	22.81 Feet
Sign Post	South	1.50 Feet

3. Section Corner to Sections 8-9-17-16, T37N, R16E.

Corner was marked by a 4" scribed and squared post in an east west fence line. The signed witness testimony of Frank Kowalkowski, area land owner and resident was used to help verify the corner position.

Maple 6"	N14°W	27.65 feet
Balsam Fir 7"	S82°E	4.63 feet
Balsam Fir 6"	S04°W	20.99 feet
Balsam Fir 10"	S62°W	6.10 feet
Sign Post	South	1.50 feet

Stock No. 26273

Sheet 3 of 5

4. Section Corner to Sections 7-8-17-18, T37N, R16E.

This corner position was restored by the use of the river calls to the south of 17 chains and 7 chains from the corner, and the river call to the north of 8 chains. These streams are deep channels and were found not to have moved in their course during the last 150 years by an appreciable amount. The stream calls fit well and for the east west location, the proportioned distance between the $S\frac{3}{4}$ corners of Sections 7 and 8 was used. This was the best available evidence of the corner location.

Tamarack 5"	S 84°E	23.17 feet
Spruce 4"	S 45°E	50.28 feet
Spruce 5"	N 21°E	26.70 feet
Tamarack 4"	N 28°W	51.90 feet
Sign Post	West	1.00 feet

5. Quarter Corner to Sections 5 and 8, T37N, R16E.

Corner was recovered and monumented in 1973 and recorded as document No. 105101 by Jean Resvick R.L.S.-802

Maple 9"	N 55°E	21.64 feet
Maple 9"	S 10°W	40.13 feet
Maple 18"	N 57°W	6.00 feet
Sign Post	SW	1.00 feet

6. Quarter Corner to Sections 8 and 9, T37N, R16E.

Corner was marked by a 3" squared and scribed post with $\frac{3}{4}$ " iron pipe along side of the monument. The original BT - Tamarack 12 N 21 E 28 lks was also verified and helped prove the post.

Cedar 9"	N 72°E	16.14 feet
Cedar 6"	S 65°E	25.67 feet
Cedar 10" With Forest Tag	N 84°E	13.50 feet
Sign Post	S 52°W	0.90 feet

7. Quarter Corner to Sections 8 and 17, T37N, R16E.

Corner was recovered and monumented in 1977 and recorded as document N. 113303 by William Cochrane, R.L.S.-1107

Maple 6"	N 81°E	12.01 feet
Maple 7"	South	6.11 feet
Sign Post	NW	0.50 feet

8. Quarter Corner to Sections 7 and 8, T37N, R16E.

Corner was recovered to original location by the use of the original bearing tree found. The Tamarack stump with blaze mark on face was located at the N 40 E 28 lks position. The stump is now 10" in diameter and under a covering of moss. Its position fit the single proportionate point within 6 feet.

Tamarack 5"	N 36°W	69.22 feet
Tamarack 7"	N 48°E	30.21 feet
Sign Post	N 61°W	1.20 feet

Corners Established.9. Center One Quarter Corner of Section 8, T37N, R16E.

This Corner position was established by straight line intersection between opposite quarter corners on the periphery of Section 8.

Maple 8"	N 36°W	13.81 feet
Y. Birch 9"	N 11°E	11.90 feet
Sign Post	N 46°E	1.20 feet

Stock No. 26273

Sheet 4 of 5

10. South One Sixteenth Corner between Sections 8 and 9, T37N, R16E.

Corner was established by setting point midway and on line between the $W\frac{1}{4}$ and SW corners of Section 9. A 3" squared post was found at this location within 0.40 ft. of true point.

Cedar 8"	N 06°E	3.28 feet
Cedar 6"	S 74°E	13.26 feet
Sign Post	N 32°W	1.30 feet
Cedar (Scribed)	S 14°W	5.40 feet

11. South-East One Sixteenth Corner of Section 8, T37N, R16E.

Corner was established at the intersection point of the line connecting opposite sixteenth corners on the periphery of the $SE\frac{1}{4}$ of Section 8.

Hemlock 10"	N 62°W	21.61 feet
Balsam Fir 7"	S 65°W	34.80 feet
Sign Post	N 32°W	1.20 feet

12. Center South One Sixteenth Corner of Section 8.

Corner was established midway and on line between the $C\frac{1}{4}$ corner and the $S\frac{1}{4}$ corner of Section 8.

Maple 7"	S 47°E	9.74 feet
Maple 9"	S 51°W	10.12 feet
Sign Post	S 28°E	1.63 feet

13. South One Sixteenth Corner between Sections 7 and 8 T37N, R16E.

Corner was set and established midway and on line between the $W\frac{1}{4}$ and SW corners of Section 8.

Tamarack 6"	S 76°E	51.62 feet
Tamarack 7"	N 57°W	39.07 feet
Sign Post	S 48°W	1.10 feet

14. East One Sixteenth Corner between Sections 8 and 17, T37N, R16E.

Corner was established midway and on line between the $S\frac{1}{4}$ and SE corners of Section 8.

Maple 8"	N 50°W	30.67 feet
Spruce 6"	N 52°E	30.38 feet
Sign Post	N 31°W	2.34 feet

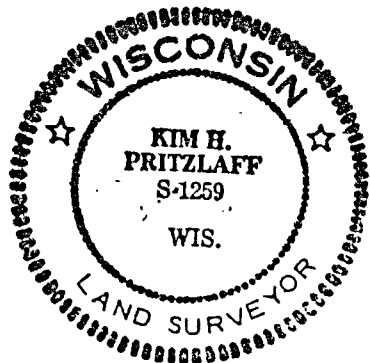
Stock No. 26273

Sheet 5 of 5

SURVEYOR'S AFFIDAVIT

State of Wisconsin)
County of Forest)ss

I, Kim H Pritzlaff, Land Surveyor with Aaron Associates of Oconto Falls, Wisconsin and a Registered Land Surveyor in the State of Wisconsin hereby certify that I have surveyed and subdivided Section 8, Township 37 North, Range 16 East of the Fourth Principal Meridian, Forest County, Wisconsin. The plat map and survey are a correct representation of the land surveyed and subdivided. I have surveyed and subdivided said Section in accordance with the rules of the survey of the public lands and with the Statutes of the State of Wisconsin.



Kim H. Pritzlaff

Kim H Pritzlaff, Aaron A associates
R.L.S. State of Wisconsin
Certificate No. 1259

Date of Survey: 1982



JUL 15 1982

Dora C. James