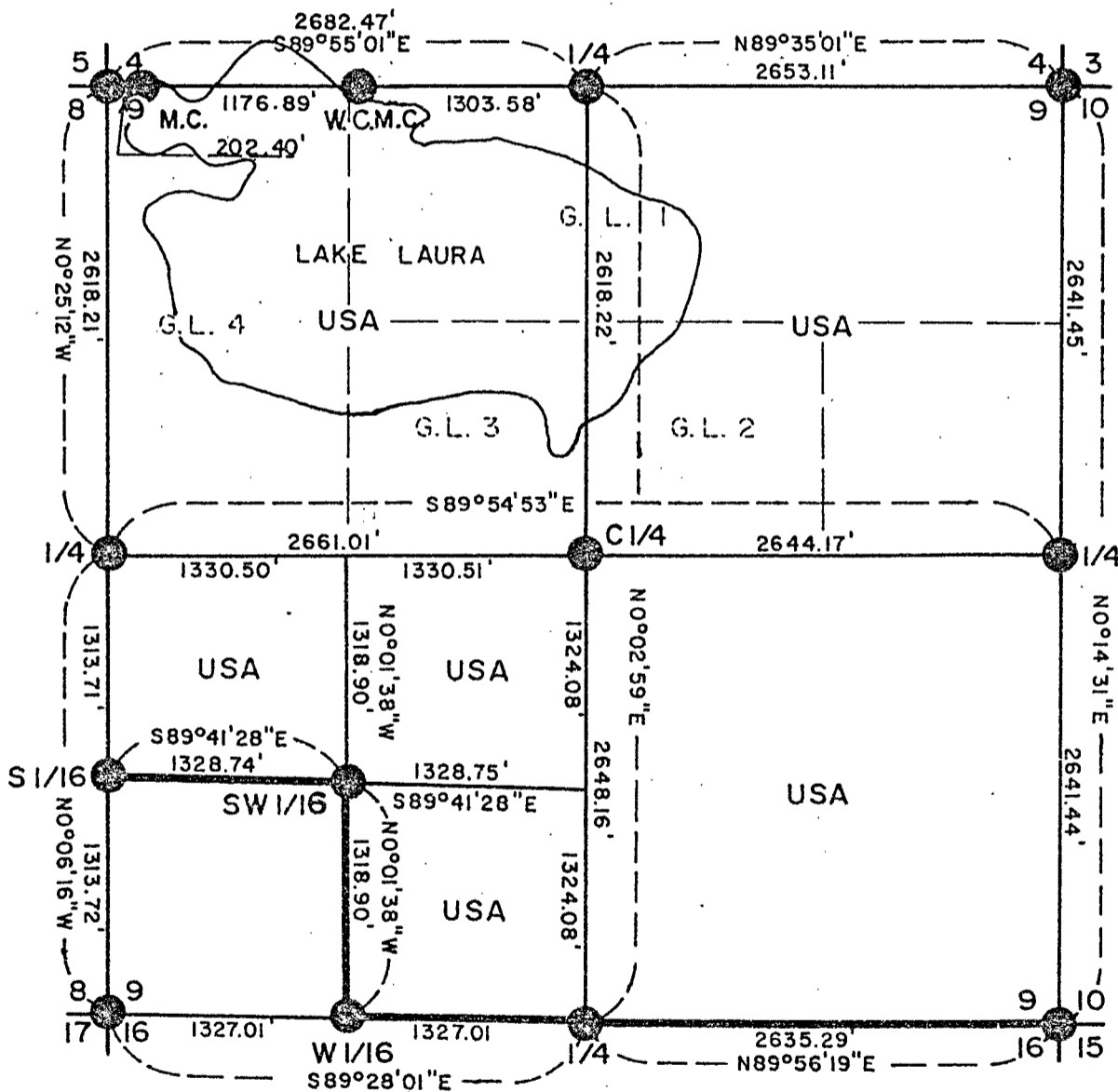
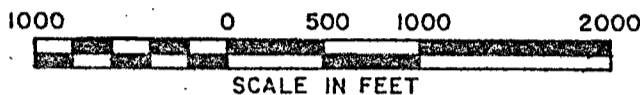


PLAT OF SURVEY U.S. GOVERNMENT LAND

Being NW 1/4, NE 1/4, SE 1/4, E 1/2 SW 1/4, and NW 1/4 SW 1/4 all in Section 9
Township 37 North, Range 16 East, Fourth Principal Meridian
FOREST COUNTY, WISCONSIN



LEGEND

- = 2" Driveable Aluminum Berntsen monument set.
- = 2" iron pipe with brass cap found in place
- USA = U.S. Government land
- = U.S. Government boundary

CONVERSION FACTORS

Feet to Meters - 0.3048
Meters to Feet - 3.2808

Stock No. 26273

Sheet 2 of 6

SURVEY NOTES

This survey was made by the U.S. Department of Agriculture, Forest Service, for the purpose of establishing, and marking and perpetuating the corners and boundary lines of the U.S. Government Land on the perimeter and within Section 9 Township 37 North, Range 16 East, of the Fourth Principal Meridian, Forest County, Wisconsin as shown on the plat map herewith.

The original Government subdivision of the township was made by James McBride in 1859. Universal Oil company had records of some of the corners which their surveyors had perpetuated but these records were lost in fires.

The corner positions recovered and established by this survey were monumented by monuments described in the legend of this map.

The bearings between corner positions are true bearings as determined by solar observations near the NW corner of Section 6 and again near the NE corner of Section 3. The relative accuracy of the control traverse for corner establishment was one part in 10,000. The field measurements were done with a Wild T-2 theodolite and a Beetle 1600 infrared distance meter. The field notes and a copy of the plat of survey are on file in the Forest Supervisor's office in Rhinelander, Wisconsin.

Corners Recovered and Restored1. Section Corner to Sections 4-5-8-9- T37N, R16E.

Corner restored from the location of three original bearing tree stumps and swamp call to the south of 0.60 chains and lake call to the east of 3.35 chains. The Hemlock 10" N64W 40 lks, the Hemlock 36" N24E 30 lks, and the Hemlock 12" S64W 50 lks were all rotted but evident in position and in solid enough condition to identify.

Maple 6"	S 12°W	6.14 feet
Y. Birch 10"	S 49°W	26.94 feet
Maple 8"	N 34°W	45.38 feet
Y. Birch 4"	N 45°E	22.81 feet
Sign Post	South	1.50 feet

2. Section Corner to Sections 3-4-9-10, T37N, R16E.

Corner was restored using as best available evidence, a pickett found 24" beneath surface vegetation and three feet west of a four sided blazed Spruce tree now dead. Swamp call to the south of 5 chains fit this position. During surveys to the west of this section, corner positions fell within 6 feet of the four sided blazed trees we found. These trees were blazed as part of the Universal Oil Co, corner recovery program of their own surveyors.

Tamarack 5"	N 52°W	43.28 feet
Tamarack 6"	N 72°E	49.90 feet
Tamarack 5"	S 41°E	19.42 feet
W. Pine 6"	S 52°W	68.45 feet
Sign Post	S 22°W	1.36 feet

Stock No. 26273

Sheet 3 of 6

3. Section Corner to Sections 9-10-15-16, T37N, R16E.

Corner position was marked by a 4" squared and scribed wood post. All three of the Hemlock bearing trees were recovered but no evidence of the Sugar was found. The Hemlock 24" S 14E 20 lks was standing above ground, while the other Hemlock stumps were just beneath the clear cut rubble in the area.

Maple 8"	N 44°E	9.23 feet
Maple 7"	N 25°W	6.08 feet
Maple 10"	N 86°E	27.34 feet
Balsam Fir 8"	S 22°W	50.20 feet
Sign Post	North	1.00 foot

4. Section Corner to Sections 8-9-16-17, T37N, R16E.

Corner was marked by a 4" scribed and squared wood post in an east west fence line. The signed witness testimony of Frank Kowalkowski, area resident and land owner, was used to help verify the corner post position.

Maple 6"	N 14°W	27.65 feet
Balsam Fir 7"	S 82°E	4.63 feet
Balsam Fir 6"	S 04°W	20.99 feet
Balsam Fir 10"	S 62°W	6.10 feet
Sign Post	South	1.50 feet

5. Quarter Corner to Sections 4 and 9, T37N, R16E.

Corner position restored using the two bearing trees found at the corner position. A 14" Hemlock stump was located N 36 W 43 lks, and the 12" Hemlock stump was located S 25 E 38 lks. A Maple tree was blazed and used to witness the SE bearing tree. The SE bearing tree distance could be mistaken for 33 lks, but the 38 lk distance fit the other BT and the swamp call to the east.

Maple 7"	S 68°E	12.96 feet
Maple 8"	S 02°W	24.81 feet
Sign Post	S 45°W	2.00 feet

6. Quarter Corner to Sections 9 and 10, T37N, R16E.

Corner position was restored using single proportionate measurement between the NE and SE corners of Section 9. No evidence of this corner position was located.

Cedar 6"	S 54°W	18.60 feet
Cedar 5"	S 08°E	22.31 feet
Sign Post	N 12°W	2.00 feet

7. Quarter Corner to Sections 9 and 16, T37N, R16E.

Corner position was marked by a 16" long Spruce post point found under the vegetation. The point was proved by the two Tamarack bearing tree stumps fairly rotted. A 5" Tamarack with an old Forestry tag set in 1947 helped witness the corner which fell East 22 lks.

Tamarack 6"	N 52°E	29.48 feet
Tamarack 5"	S 66°E	31.89 feet
Tamarack 5"	S 69°W	28.40 feet
Tamarack 4"	N 45°W	19.15 feet
Sign Post	N 40°W	1.30 feet

Stock No. 26273

Sheet 4 of 6

8. Quarter Corner to Sections 8 and 9, T37N, R16E.

Corner was marked by a 3" squared wood post with 3/4" iron pipe along side of post. The original BT - Tamarack 12 N 21E 28 lks was also verified in solid condition and helped prove the post.

Cedar 9"	N 72°E	16.14 feet
Cedar 6"	S 65°E	25.67 feet
Cedar 10" with Forest tag	N 84°E	13.50 feet
Sign Post	S 52°W	0.90 feet

Corners Established9. Center Quarter Corner of Section 9, T37N, R16E,

Corner was established using straight line intersection from opposite quarter corners on the periphery of Section 9.

Balsam Fir 5"	N 73°W	14.18 feet
Maple 9"	N 48°E	22.71 feet
Sign Post	N 12°W	1.55 feet

10. West One Sixteenth Corner between Sections 9 and 16, T37N, R16E.

Corner was established midway and on line between the SW and S $\frac{1}{4}$ corners of Section 9. The position again fell within 3 feet of a four sided blazed Maple tree.

Maple 7"	S 50°W	15.93 feet
Maple 7"	N 52°W	20.54 feet
Sign Post	N 35°E	1.30 feet

11. South-West One Sixteenth Corner of Section 9, T37N, R16E.

Corner position was established using straight line intersection from the opposite sixteenth corners on the periphery of the SW $\frac{1}{4}$ of Section 9.

Maple 6"	S 78°W	9.15 feet
Maple 7"	S 34°E	29.85 feet
Sign Post	N 28°E	1.42 feet

12. South One Sixteenth Corner between Sections 8 and 9, T37N, R16E.

Corner position was established using a point midway and on line between the W $\frac{1}{4}$ and SW corners of Section 9. A 4" squared wood post was found at this point and fell within 0.40 ft. of true corner position.

Cedar 8"	N 06°E	3.28 feet
Cedar 6"	S 74°E	13.26 feet
Cedar 8" (scribed and blazed)	S 14°W	5.40 feet
Sign Post	N 32°W	1.30 feet

(Corners Established continued on Sheet 6 of 6)

Stock No. 26273

Sheet 5 of 6

SURVEYOR'S AFFIDAVIT

State of Wisconsin)
 County of Forest)ss

I, Kim H Pritzlaff, Land Surveyor with Aaren Associates of Oconto Falls, Wisconsin, and a Registered Land Surveyor in the State of Wisconsin hereby certify that I have surveyed and subdivided Section 9, Township 37 North, Range 16 East of the Fourth Principal Meridian, Forest County, Wisconsin. The plat map and survey are a correct representation of the land surveyed and subdivided. I have surveyed and subdivided said Section in accordance with the rules of the survey of the public lands and with the Statutes of the State of Wisconsin.



Kim H Pritzlaff
 Kim H Pritzlaff, Aaren Associates
 R.L.S. State of Wisconsin
 Certificate No. 1259

Date of Survey: 1982



JUL 15 1982

Dora C. James

Stock No. 26273

Sheet 6 of 6

Corners Established (continued)

- Witness corner to
13. Meander Corner on the West Side of Lake Laura between Sections 4 and 9, T37N, R16E.

Corner restored by single proportionate measurement between the NW and N $\frac{1}{4}$ corners of Section 9. Corner fell approximately 40 feet in the lake; so I set a Witness Meander Corner 54.18 feet west and on line.

Tamarack 3"	N75°W	52.95 feet
W. Pine 3"	S49°W	11.92 feet
Sign Post	West	0.90 feet

14. Meander Corner on the East Side of Lake Laura between Sections 4 and 9, T37N, R16E.

Corner restored by single proportionate measurement between the NW and N $\frac{1}{4}$ corners of Section 9.

Sugar 3"	N08°E	10.11 feet
Sugar 3"	N34°W	23.86 feet
Sign Post	South	2.00 feet