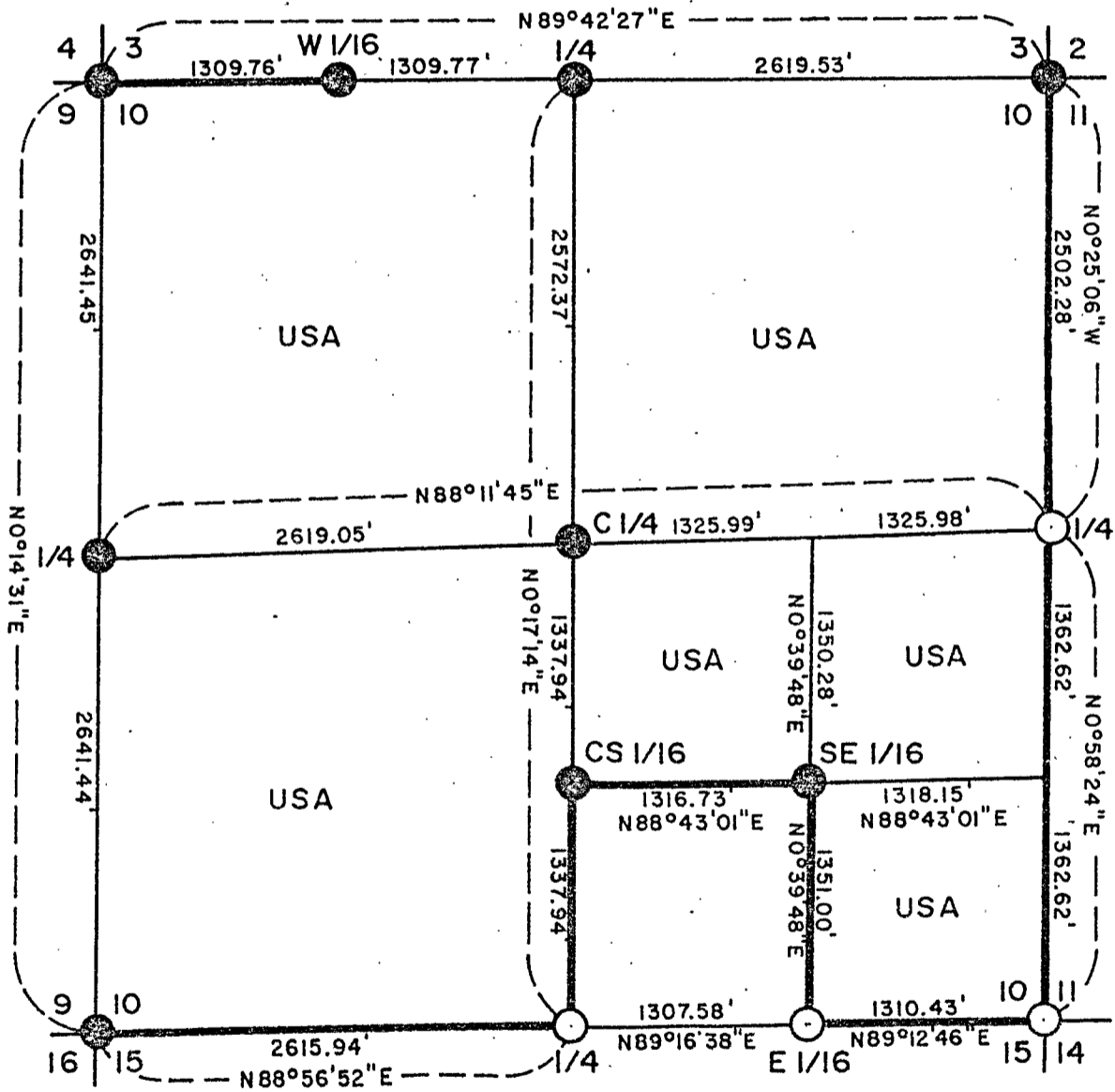
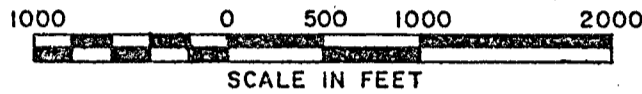


PLAT OF SURVEY U.S. GOVERNMENT LAND

Being SW1/4, NW1/4, NE1/4, N1/2 SE1/4, and SE1/4 SE1/4 all in Section 10,
Township 37 North, Range 16 East, Fourth Principal Meridian
FOREST COUNTY, WISCONSIN



LEGEND

- = 2" Driveable Aluminum Berntsen monument set.
- = 2" iron pipe with brass cap found in place.
- USA = U.S. Government land
- = US Government boundary

CONVERSION FACTORS

Feet to Meters -0.3048
Meters to Feet -3.2808

Stock No. 26273

Sheet 2 of 4

SURVEY NOTES

This survey was made by the U.S. Department of Agriculture, Forest Service, for the purpose of establishing, marking and perpetuating the corners and boundary lines of the U.S. Government land on the perimeter and within Section 10, Township 37 North, Range 16 East, of the Fourth Principal Meridian, Forest County, Wisconsin as shown on the plat map herewith.

The original Government subdivision of this township was made by James McBride in 1859. Universal Oil Company had some records of corners in this area from their own surveyors but fire claimed these records. Geniset Engineering Co. out of Rhinelander, Wisconsin resurveyed the south line of Section 10 in 1954.

The corner positions recovered and established by this survey were monumented by monuments described in the map legend.

The bearings between corner positions are true bearings as determined by solar observations near the NW corner of Section 6 and the NE corner of Section 3. The relative accuracy of the control traverse for corner establishment was one part in 10,000. The field measurements were done using a Wild T-2 theodolite and a Beetle 1600 infrared distance meter. The field notes and a copy of the plat of survey are on file in the Forest Supervisor's Office at Rhinelander, Wisconsin.

Corners Recovered and Restored1. Section Corner to Sections 3-4-9-10, T37N, R16E.

Corner was restored using as best available evidence, a pickett found 24" beneath surface vegetation and three feet west of a dead four sided blazed Spruce tree. Swamp call to the south of 5.0 chains fit this corner position. During surveys to the west of this Section; corner positions were found within 6 feet of these four sided blazed trees. These trees were blazed as part of the Universal Oil Company recovery program.

Tamarack 5"	N 52°W	43.28 feet
Tamarack 6"	N 72°E	49.90 feet
Tamarack 5"	S 41°E	19.42 feet
W. Pine 6"	S 52°W	68.45 feet
Sign Post	S 22°W	1.36 feet

2. Section Corner to Sections 2-3-10-11, T37N, R16E.

Corner was recovered marked by a 5" wood post point and a 4" Universal Oil Company post. Metal location tag was on a windfall Cedar to the NE and a 14" Cedar stump (original bearing tree) was found N 56 E 21 lks.

Cedar 10"	N 44°E	36.39 feet
Cedar 5"	S 51°E	30.14 feet
Cedar 8"	S 03°E	18.92 feet
Cedar 10"	N 64°W	17.07 feet
Sign Post	Southwest	1.00 foot

3. Section Corner to Sections 10-11-14-15, T37N, R16E.

Corner was recovered and monumented in 1973 and recorded as document No. 104447 by Jean Resvick R.L.S.-802

Balsam 5"	S 21°E	27.98 feet
Maple 6"	S 85°W	26.93 feet
Sign Post	NW	0.30 feet

Stock No. 26273

Sheet 3 of 4

4. Section Corner to Sections 9-10-15-16, T37N, R16E.

Corner position was marked by a 4" wood post squared and scribed. All three of the Hemlock bearing trees were recovered but no evidence of the Sugar was found. The Hemlock 24" S 14 E 20 lks was standing above ground, while the other Hemlock stumps were just beneath the clear cut rubble in the area.

Maple 8"	N 44°E	9.23 feet
Maple 7"	N 25°W	6.08 feet
Maple 10"	N 86°E	27.34 feet
Balsam Fir 8"	S 22°W	50.20 feet
Sign Post	North	1.00 Foot

5. Quarter Corner to Sections 9 and 10, T37N, R16E.

Corner position was restored using single proportionate measurement between the NW and the SW corners of Section 10. No evidence of the corner was located.

Cedar 6"	S 54°W	18.60 feet
Cedar 5"	S 08°E	22.31 feet
Sign Post	N 12°W	2.00 feet

6. Quarter Corner to Sections 3 and 10, T37N, R16E.

Corner position restored using single proportionate measurement between the NW and the NE corners of Section 10.

Balsam Fir 9"	N 25°E	14.90 feet
Balsam Fir 7"	S 85°W	10.38 feet
Sign Post	S 07°W	1.40 feet

7. Quarter Corner to Sections 10 and 11, T37N, R16E.

Corner recovered and monumented in 1977 and recorded as document No. 113304 by William Cochrane R.L.S.-1107

Cedar 7"	N 50°E	13.45 feet
Bk Spruce 5"	S 26°E	27.77 feet
Sign Post	West	1.00 feet

8. Quarter Corner to Sections 10 and 15, T37N, R16E.

Corner recovered and monumented in 1973 and recorded as document No. 104445 by Jean Resvick R.L.S.-802

Spruce 5"	N 43°W	27.32 feet
Balsam 4"	N 37°W	30.40 feet
Sign Post	NW	1.00 feet

Corners Established9. Center Quarter Corner of Section 10, T37N, R16E.

Corner was established by straight line intersection from opposite quarter corners around the periphery of Section 10.

Cedar 7"	N 29°W	6.95 feet
Cedar 7"	S 75°E	7.40 feet
Sign Post	N 85°W	1.30 feet

Stock No. 26273

Sheet 4 of 4

10. Center South One Sixteenth Corner of Section 10, T37N, R16E.

Corner was established midway and on line between the $S\frac{1}{4}$ and $C\frac{1}{4}$ corners of Section 10.

R. Pine 7"	N 53°E	29.10 feet
Tamarack 5"	S 22°W	15.55 feet
Sign and Post	S 74°W	1.40 feet

11. South-East One Sixteenth Corner of Section 10, T37N, R16E.

Corner was established using straight line intersection from the opposite sixteenth corners on the periphery of the $SE\frac{1}{4}$ of Section 10.

Maple 9"	N 34°W	10.29 feet
W. Pine 12"	S 72°W	30.53 feet
Sign post	N 50°E	1.00 feet

12. East One Sixteenth Corner between Sections 10 and 15, T37N, R16E.

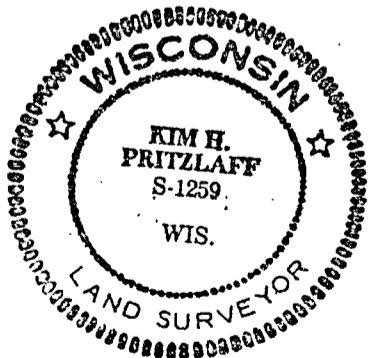
Corner was recovered and monumented in 1973 and recorded as document No. 104446 by Jean Resvick R.L.S.-802

W. Pine 19"	N 28°W	17.70 lks
W. Pine 14"	N 78°E	DESTROYED 4.00 lks
W. Pine 14"	N 52°E	New BT 6.21 feet
Sign Post	N 79°E	1.22 feet

SURVEYOR'S AFFIDAVIT

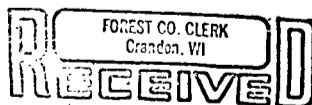
State of Wisconsin)
County of Forest)ss

I, Kim H Pritzlaff, Land Surveyor with Aaron Associates of Oconto Falls, Wisconsin, and a Registered Land Surveyor in the State of Wisconsin hereby certify that I have surveyed and subdivided Section 10, Township 37 North, Range 16 East of the Fourth Principal Meridian, Forest County, Wisconsin. The plat map and survey notes are a correct representation of the land surveyed and subdivided. I have surveyed and subdivided said Section in accordance with the rules for the survey of the public lands and with the Statutes of the State of Wisconsin.



Kim H Pritzlaff

Kim H Pritzlaff, Aaron Associates
R.L.S. State of Wisconsin
Certificate No. 1259



Date of Survey: 1982

JUL 15 1982

Dora C. James