

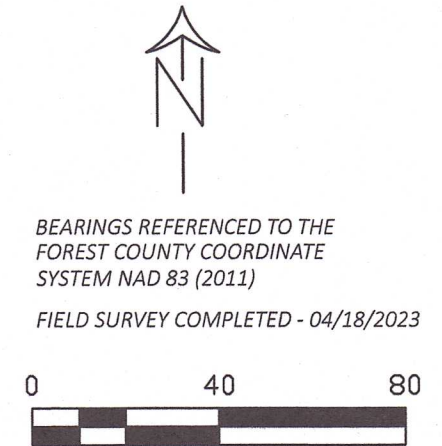
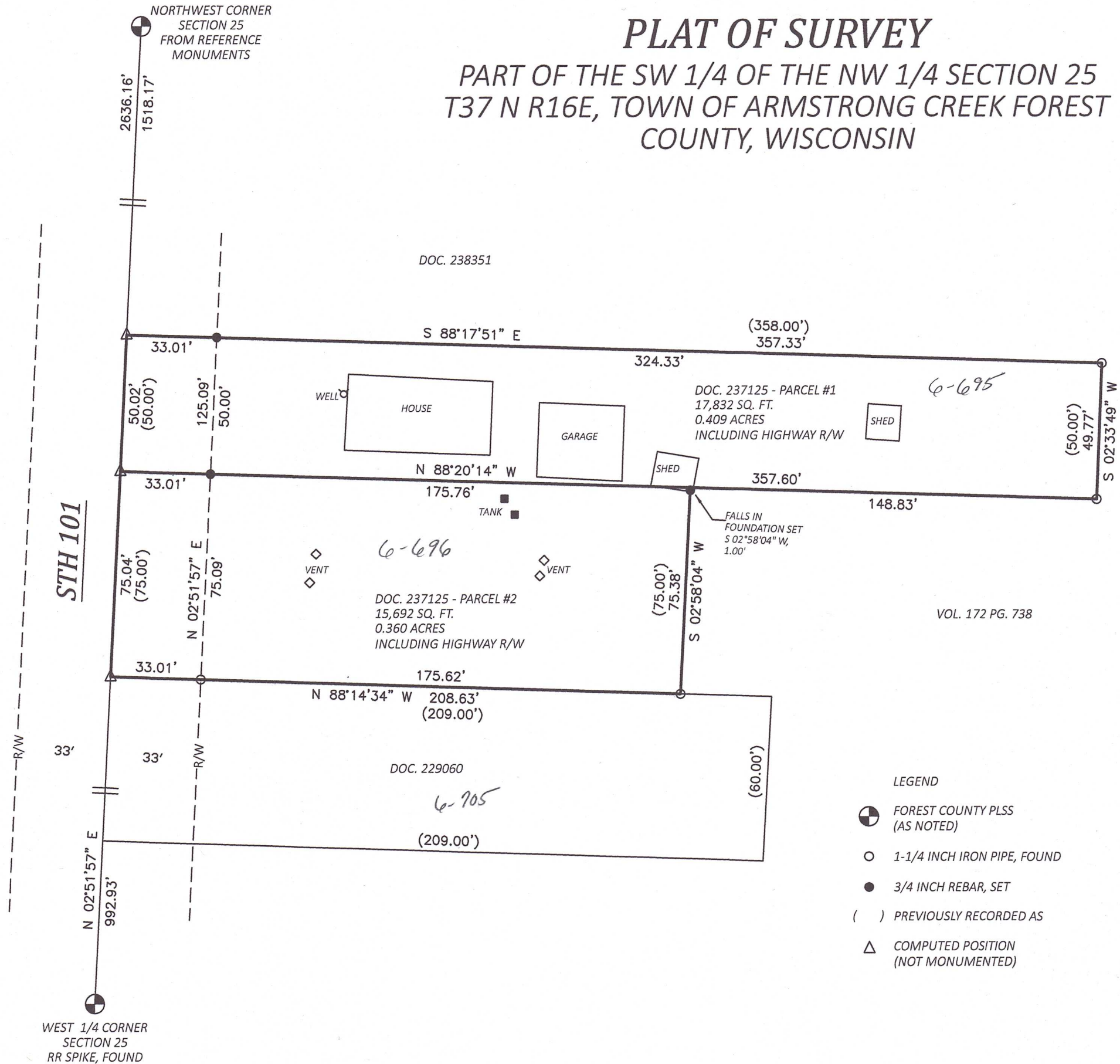
RECEIVED

MAY - 1 23

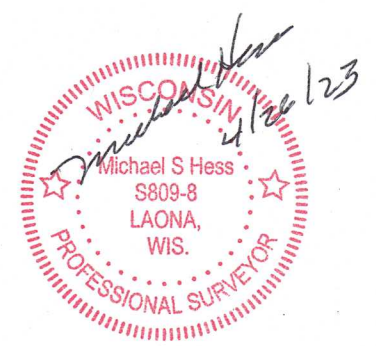
CO. TREASURER

PLAT OF SURVEY

PART OF THE SW 1/4 OF THE NW 1/4 SECTION 25 T37 N R16E, TOWN OF ARMSTRONG CREEK FOREST COUNTY, WISCONSIN



- LEGEND
- ⊙ FOREST COUNTY PLSS (AS NOTED)
 - 1-1/4 INCH IRON PIPE, FOUND
 - 3/4 INCH REBAR, SET
 - () PREVIOUSLY RECORDED AS
 - △ COMPUTED POSITION (NOT MONUMENTED)



FOREST CO SURVEYOR
FILE # 371625-20230426
DATE 05/05/2023 BY JN