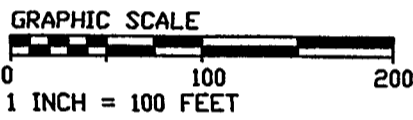


EAST 1/4, CORNER SECTION 27 PK NAIL IN PAVT USH 8

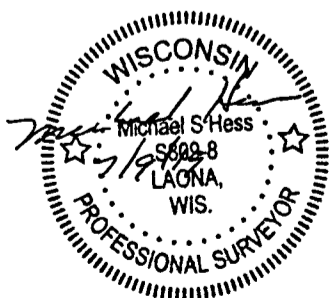
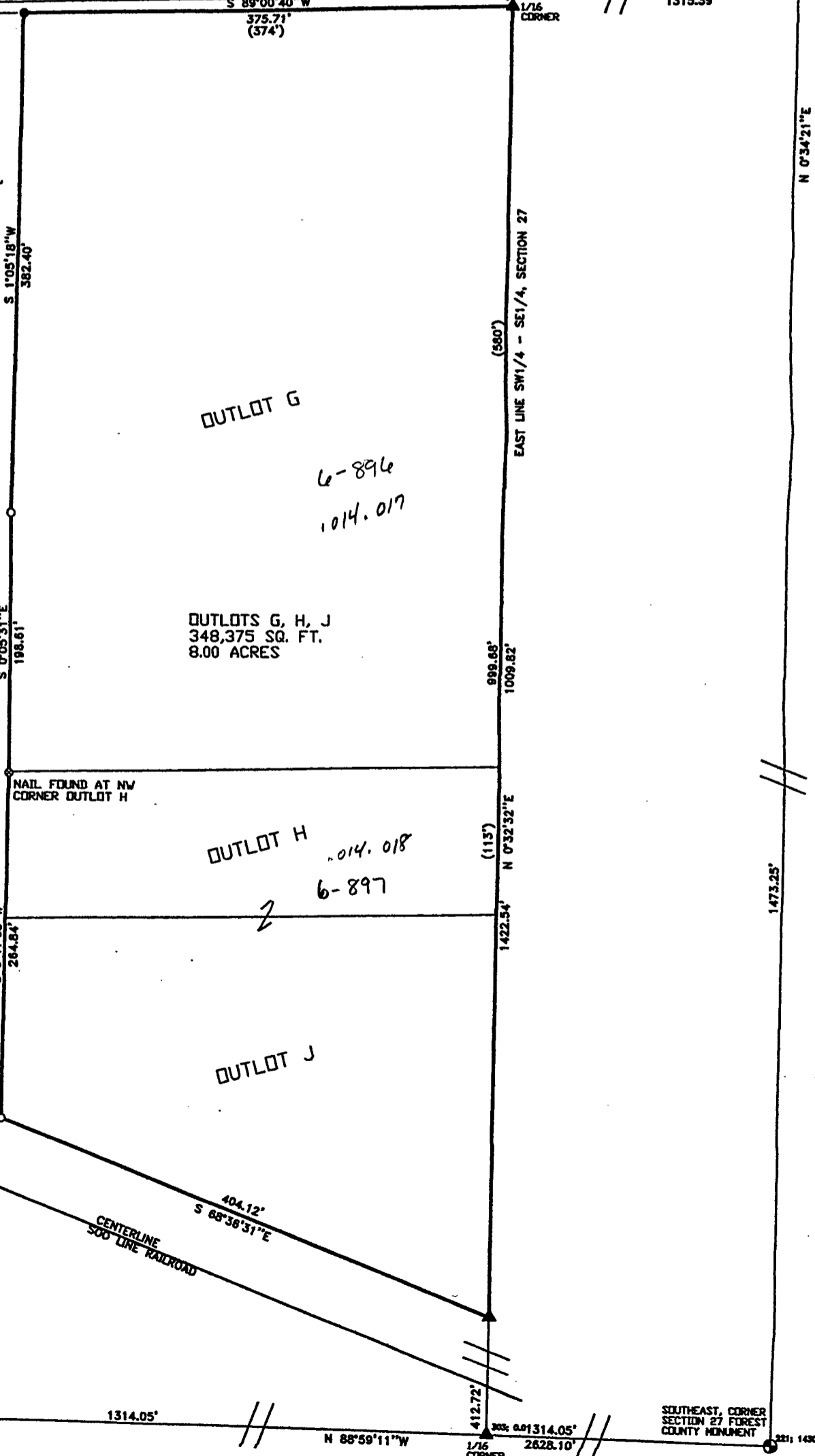
NORTHEAST 1/16 CORNER SE1/4-SE1/4, SECTION 27 FOREST COUNTY MONUMENT

PLAT OF SURVEY
 LOTS 3, 4, AND 5, OF BLOCK 2 AND OUTLOTS G, H, AND J, OF THE PLAT OF THE VILLAGE OF ENGLEKING, LOCATED IN THE NORTHWEST 1/4 OF THE SOUTHWEST 1/4, AND THE SOUTHWEST 1/4 OF THE SOUTHWEST 1/4, OF SECTION 27, TOWNSHIP 37 NORTH, RANGE 16 EAST, TOWN OF ARMSTRONG CREEK, FOREST COUNTY, WISCONSIN



LEGEND

- 1 INCH IRON PIPE, FOUND
- 1-1/4 INCH IRON PIPE, FOUND
- ⊙ FOREST COUNTY PLSS, AS NOTED
- ▲ COMPUTED POINT, NOT MONUMENTED
- 3/4 INCH REBAR, SET



N 0°30'36\"/>

SOUTH 1/4, CORNER SECTION 27 FOREST COUNTY MONUMENT

SOUTHEAST, CORNER SECTION 27 FOREST COUNTY MONUMENT

3211 1430.6