

CERTIFIED LAND CORNER RESTORATION

BEING THE NORTH SIXTEENTH CORNER BETWEEN SECTIONS  
5 AND 6, TOWNSHIP 38 NORTH, RANGE 12 EAST,  
FOURTH PRINCIPAL MERIDIAN

COUNTY OF FOREST, STATE OF WISCONSIN

S31 S32 T 39 N  
S6 S5 T 38 N

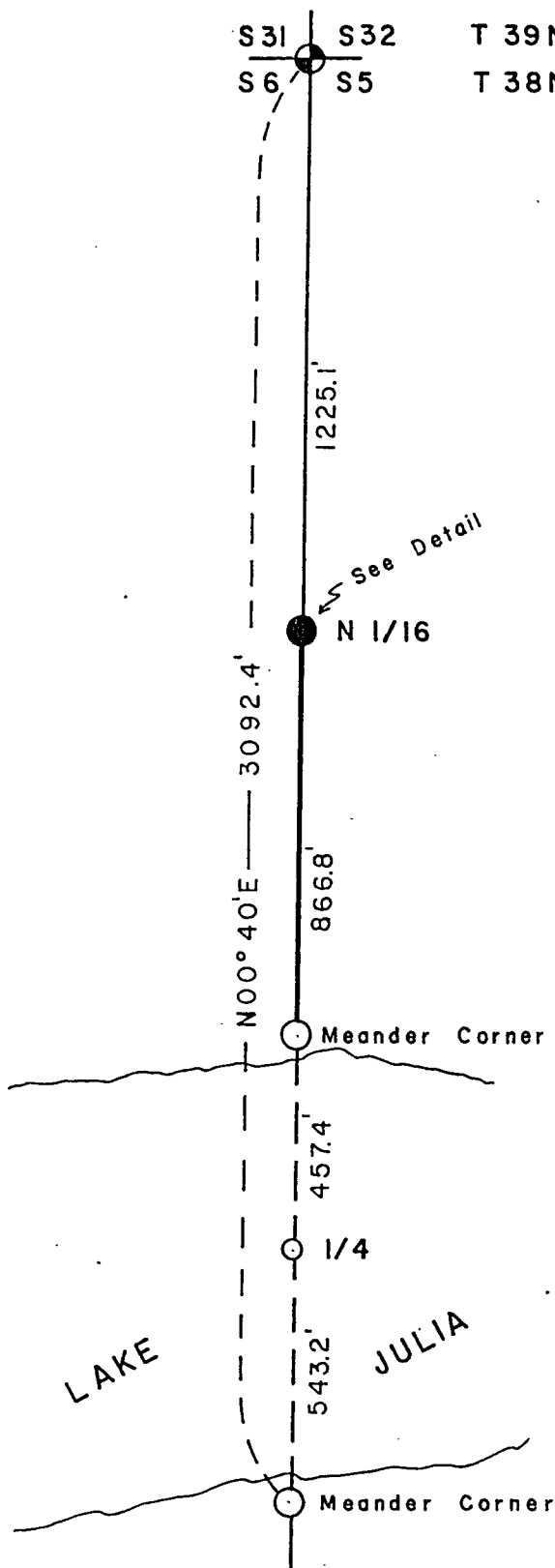
LEGEND

- 2½ inch diameter aluminum pipe monument, 30 inches long with an aluminum cap stamped to identify the corner.
- ⊕ Corners monumented and recorded.
- 1937 G.L.O. Monument.

SURVEY NOTES

The north sixteenth corner between Sections 5 and 6, T38N, R12E was established by the U.S. Department of Agriculture, Forest Service.

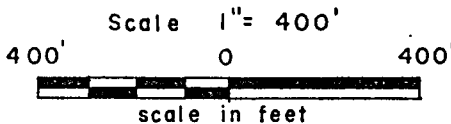
The north sixteenth corner was established by proportionate measurement and on line between the section corner common to Sections 5, 6, 31, 32 and the quarter corner which falls in Julia Lake.



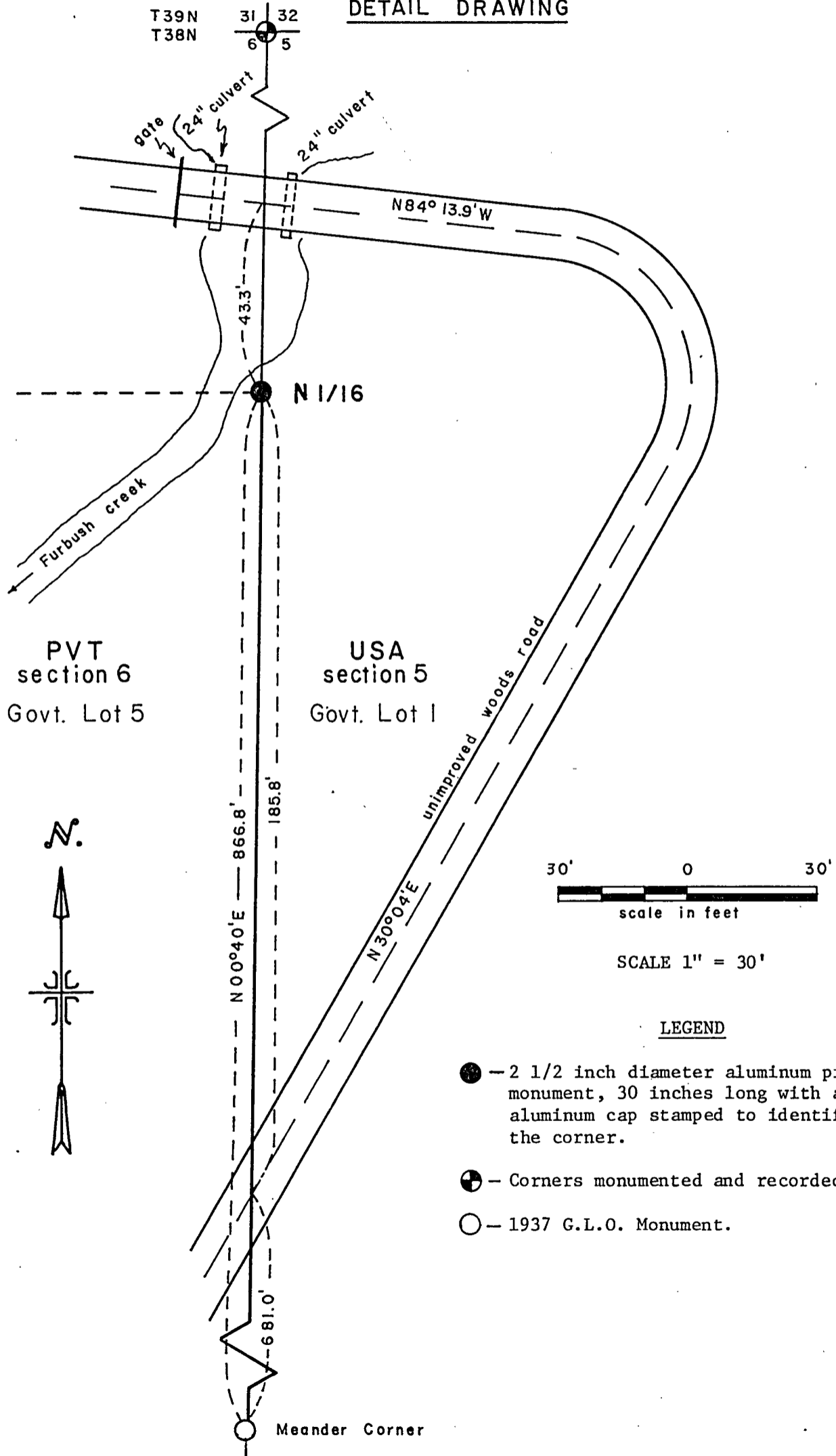
CONVERSION FACTORS:  
Feet to Meters — 0.304801  
Meters to feet — 3.280833



FOREST CO SURVEYOR  
FILE # 381205-19810000  
DATE \_\_\_\_\_ BY \_\_\_\_\_



DETAIL DRAWING



LEGEND

- - 2 1/2 inch diameter aluminum pipe monument, 30 inches long with an aluminum cap stamped to identify the corner.
- ⊕ - Corners monumented and recorded
- - 1937 G.L.O. Monument.



Stock No. 26273

Sheet 4 of 4

SURVEYOR'S AFFIDAVIT

State of Wisconsin)  
County of Forest ) ss

I, William B. Cochrane, Land Surveyor, U.S. Forest Service and a registered land surveyor in the State of Wisconsin, hereby certify that I have surveyed the north half mile between Sections 5 and 6, Township 38 North, Range 12 East, Fourth Principal Meridian.

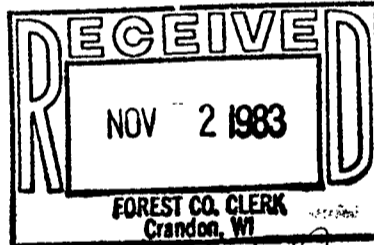
The plat map and the survey notes are a correct representation of the corners recovered and located.



*William B. Cochrane*

Land Surveyor, U.S. Forest Service  
R.L.S. State of Wisconsin  
Certificate No. S-1107

Date of Survey: 1981



*Dora C. James*

FOREST CO SURVEYOR

Stock No. 26273

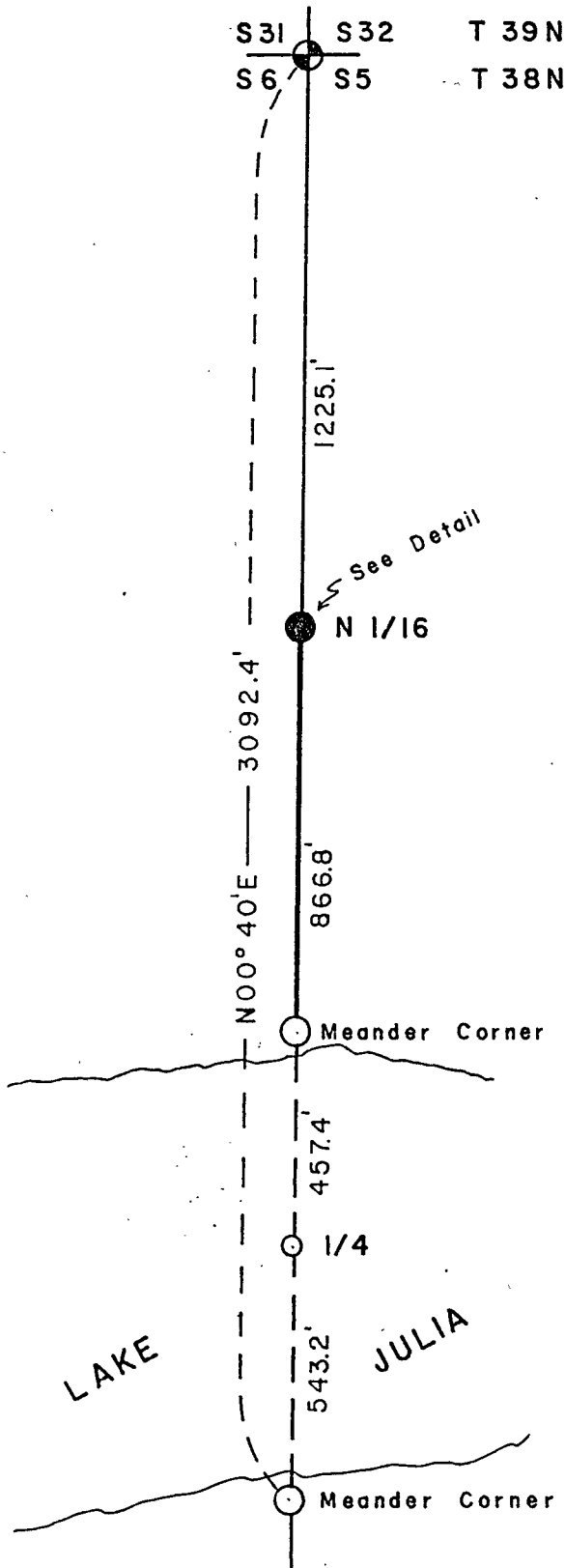
FILE # \_\_\_\_\_  
DATE \_\_\_\_\_ BY \_\_\_\_\_

FOREST CO SURVEYOR  
FILE # 381205-19810000  
DATE \_\_\_\_\_ BY \_\_\_\_\_

### CERTIFIED LAND CORNER RESTORATION

BEING THE NORTH SIXTEENTH CORNER BETWEEN SECTIONS  
5 AND 6, TOWNSHIP 38 NORTH, RANGE 12 EAST,  
FOURTH PRINCIPAL MERIDIAN

COUNTY OF FOREST, STATE OF WISCONSIN



#### LEGEND

- 2½ inch diameter aluminum pipe monument, 30 inches long with an aluminum cap stamped to identify the corner.
- ⊕ Corners monumented and recorded.
- 1937 G.L.O. Monument.

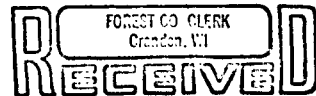
#### SURVEY NOTES

The north sixteenth corner between Sections 5 and 6, T38N, R12E was established by the U.S. Department of Agriculture, Forest Service.

The north sixteenth corner was established by proportionate measurement and on line between the section corner common to Sections 5, 6, 31, 32 and the quarter corner which falls in Julia Lake.

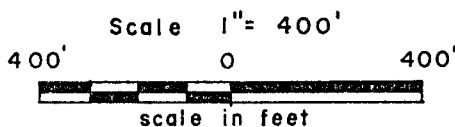
#### CONVERSION FACTORS:

Feet to Meters — 0.304801  
Meters to feet — 3.280833

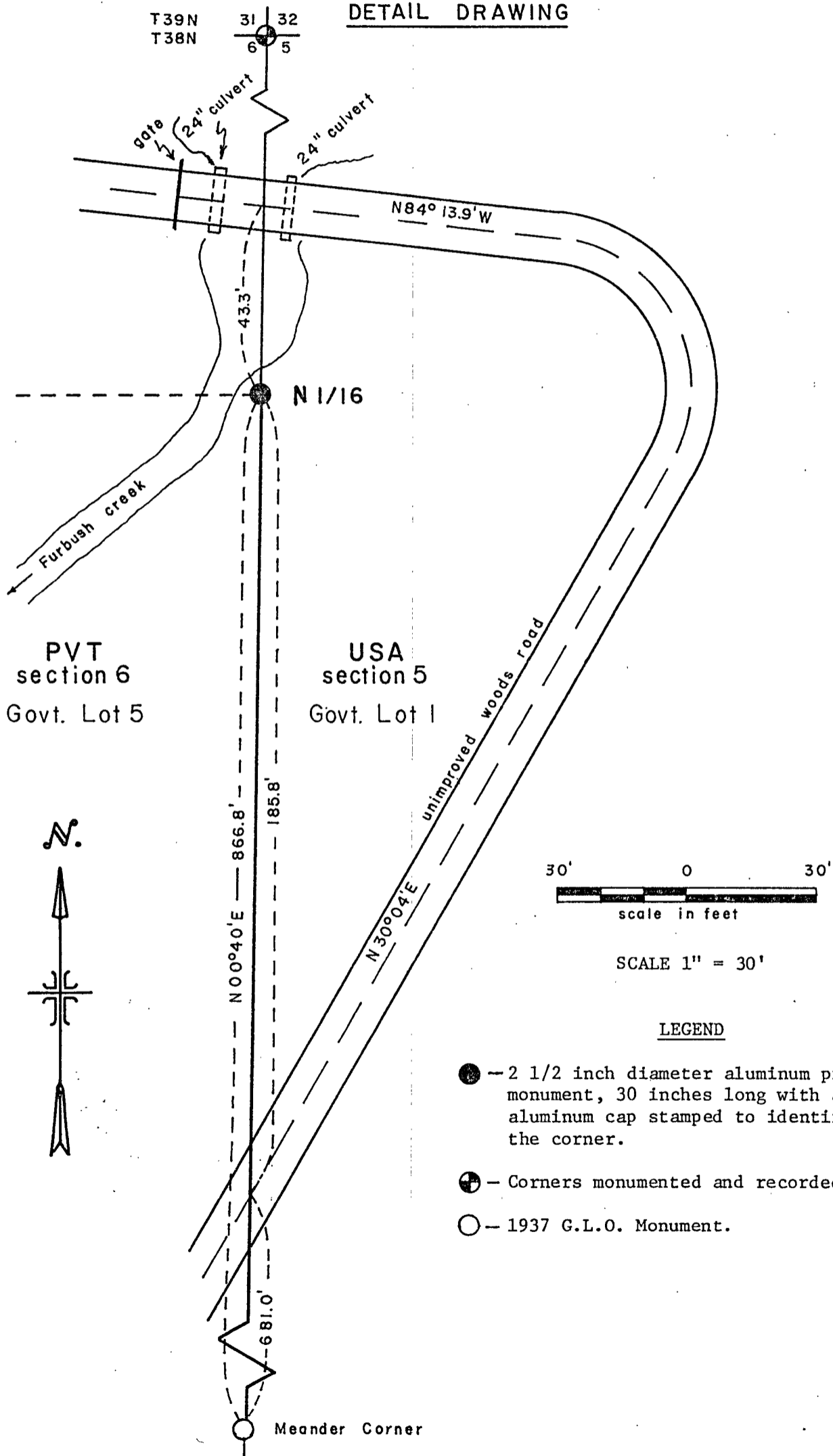


JAN 8 1982

*Dora C. James*



DETAIL DRAWING



Stock No. 26273

Sheet 3 of 4

CORNERS RECOVERED1. Section Corner Common to Sections 5, 6, 31 and 32.

Recorded as document 118064, 1979.

2. North Meander Corner Between Sections 5 and 6.

The corner position is marked by a monument from the 1937 General Land Office dependent resurvey.

Corner reference recovered:

Cedar 12" N60°E 53.67 Feet

New corner reference:

Birch 10" N 2°W 74.72 Feet

Steel Sign Post West .50 Foot

3. South Meander Corner Between Sections 5 and 6.

The corner position is marked by a monument from the 1937 General Land Office dependent resurvey.

Corner references recovered:

Red Pine 18" S 9°W 45.20 Feet

White Pine 23" S37°W 20.85 Feet

White Pine 18" S49°E 11.20 Feet

Steel Sign Post NW 2.0 Feet

CORNERS ESTABLISHED1. North Sixteenth Corner Between Sections 5 and 6.

Corner position established at proportional distance and on line between the section corner common to Sections 5, 6, 31, 32 and the quarter corner between Sections 5 and 6. The quarter corner falls in the lake.

New corner references:

Spruce 10" S38°E 14.13 Feet

Cedar 12" N70°W 53.19 Feet

Steel Sign Post Southwest .50 Foot

Stock No. 26273

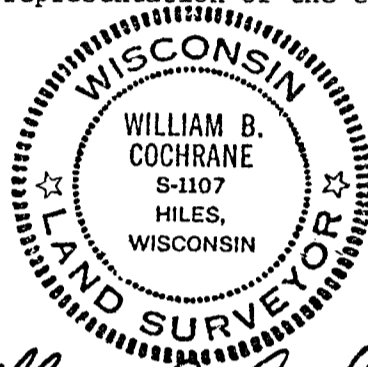
Sheet 4 of 4

SURVEYOR'S AFFIDAVIT

State of Wisconsin)  
County of Forest ) ss

I, William B. Cochrane, Land Surveyor, U.S. Forest Service and a registered land surveyor in the State of Wisconsin, hereby certify that I have surveyed the north half mile between Sections 5 and 6, Township 38 North, Range 12 East, Fourth Principal Meridian.

The plat map and the survey notes are a correct representation of the corners recovered and located.



*William B. Cochrane*

Land Surveyor, U.S. Forest Service  
R.L.S. State of Wisconsin  
Certificate No. S-1107

Date of Survey: 1981