

Stock No. 26273

FOREST CO SURVEYOR

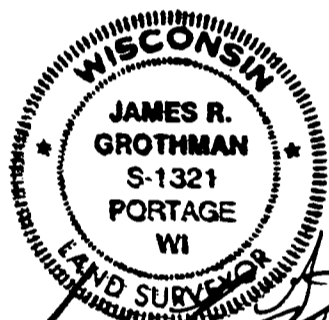
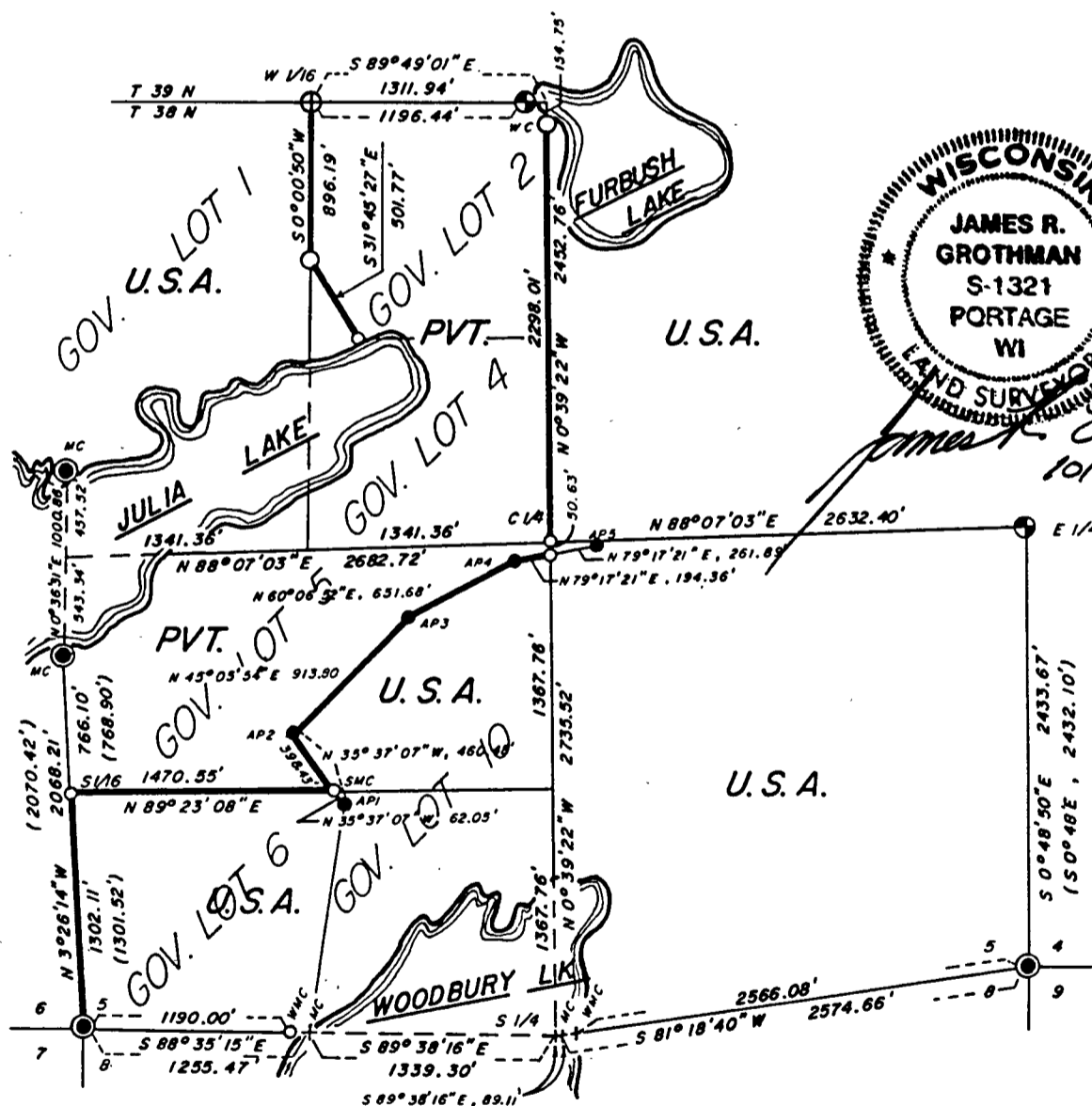
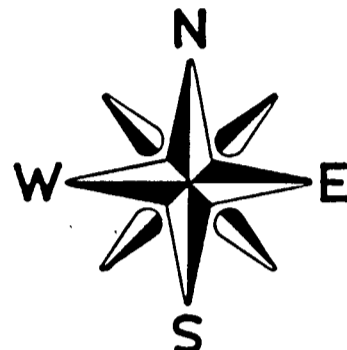
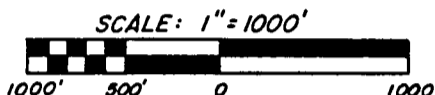
FILE # 381205-14860000

DATE \_\_\_\_\_ BY \_\_\_\_\_

# PLAT OF SURVEY U.S. GOVERNMENT LAND

Sheet 1 of 8

BEING GOVERNMENT LOTS 1, 6, AND 10, AND THE EAST 1/2, SECTION 5,  
TOWN 38 NORTH, RANGE 12 EAST, FOURTH PRINCIPAL MERIDIAN,  
FOREST COUNTY, WISCONSIN.



*James R. Grothman*  
10/10/86

### LEGEND

- FOUND 6" DIA. G.L.O. CONCRETE MONUMENT w/BRASS CAP & EMBEDDED IRON ROD.
- ⊙ FOUND 2" DIA. G.L.O. IRON PIPE w/BRASS CAP.
- FOUND 1" DIA. G.L.O. IRON PIPE w/BRASS CAP.
- SET 1" DIA. X 36" LONG BERNTSEN ALUMINUM PIPE MONUMENT w/ALUM. CAP.
- SET 1" DIA. X 60" LONG BERNTSEN ALUMINUM PIPE MONUMENT w/ALUM. CAP.
- U.S. GOVERNMENT LAND BOUNDARY LINE MARKED AND POSTED TO USFS STANDARDS.
- (...) PUBLISHED G.L.O. DEPENDENT RESURVEY INFORMATION.
- ⊕ FOUND 2" DIA FOREST SERVICE IRON PIPE w/BRASS CAP

Stock No. 26273

Sheet 2 of 8

T 38 N R 12 E, SECTION 5

SURVEY NOTES

This survey is made by GENERAL ENGINEERING COMPANY, INC. pursuant to United States Department of Agriculture, Forest Service Contract "No. 53-56A6-6-00020, Cadastral Survey" for the purpose of recovering, restoring, establishing, marking and perpetuating the corners and boundary lines of the U.S. Government land on the perimeter and within Section 5, T38N, R12E, Fourth Principal Meridian, Forest County, Wisconsin as shown on the plat herewith.

The original government survey of the township was made in 1859, by William E. Daugherty.

The U.S. Government acquired title to the lands in Section 5, in 1932, 1933 and 1957.

This township was resurveyed by the General Land Office in 1938.

Bearings between corner positions are true bearings by reference to a solar observation. All distances shown thereon are in feet and hundredths of feet. The control traverse was measured by use of electronic distance measuring equipment to an accuracy of one part in 20,000. Corners recovered, restored and established by this survey are marked by the monument described in the map legend. Each monumented corner position is referenced to blazed and scribed bearing trees and described reference objects.

CORNERS RECOVERED1. Corner to Sections 4-5-8-9

Corner is monumented by a G.L.O. brass cap.

## Corner References:

Maple	10"	S35°E	12.20 feet
Maple	8"	N74°E	13.71 feet
Maple	6"	N28°W	27.20 feet
Maple	10"	S77°W	18.90 feet
Steel sign post		North	1.00 foot

2. Quarter Corner to Sections 5&4

Corner is monumented by a G.L.O. brass cap.

## Corner References:

Spruce	2"	S41°W	19.93 feet
Spruce	2"	N24°E	10.48 feet
Spruce	2"	N62°E	19.55 feet
Spruce	2"	S50°E	10.37 feet
Steel Sign Post		South	1.00 foot

Stock No. 26273

Sheet 3 of 8

T 38 N R 12 E, SECTION 5

3. Corner to Sections 5-6-7-8

Corner is monumented by a G.L.O. brass cap.

## Corner References:

Birch	16"	S2 <sup>o</sup> E	19.20 feet
Birch	12"	N76 <sup>o</sup> E	2.85 feet
Birch	8"	N85 <sup>o</sup> W	8.20 feet
Birch	8"	N14 <sup>o</sup> E	32.43 feet
Steel Sign Post		East	.50 foot

4. Witness Meander Corner to Sections 5-8

This corner was monumented by a G.L.O. brass cap, but this location now falls in Woodbury Lake. Do not set monument in Lake.

## Corner References:

Tamarack	6"	S74 <sup>o</sup> 30'E	22.50 feet
Tamarack	6"	S13 <sup>o</sup> 30'E	43.65 feet
Spruce	5"	S23 <sup>o</sup> W	17.90 feet
Steel Sign Post		North	1.00 foot +

5. Angle Point Number 1, Section 5

Corner is monumented by a G.L.O. brass cap.

## Corner References:

Maple	5"	N7 <sup>o</sup> W	18.82 feet
Poplar	5"	S56 <sup>o</sup> W	12.99 feet
Birch	6"	S9 <sup>o</sup> E	5.18 feet
Steel Sign Post		East	1.00 foot

6. Angle Point Number 2, Section 5

Corner is monumented by a G.L.O. brass cap.

## Corner References:

Tamarack	7"	N89 <sup>o</sup> E	10.13 feet
Tamarack	10"	S84 <sup>o</sup> W	27.38 feet
Cedar	7"	S25 <sup>o</sup> E	39.25 feet
Steel Sign Post		South	1.00 foot

7. Angle Point Number 3, Section 5

Corner is monumented by a G.L.O. brass cap.

## Corner References:

White Birch	10"	N75 <sup>o</sup> E	12.49 feet
Poplar	6"	S35 <sup>o</sup> W	28.82 feet
Poplar	13"	N68 <sup>o</sup> W	22.82 feet
White Birch	11"	S50 <sup>o</sup> E	18.72 feet
Steel Sign Post		Southeast	1.00 foot +

Stock No. 26273

Sheet 4 of 8

T 38 N, R 12 E, Section 5

8. Angle Point Number 4, Section 5

Corner is monumented by a G.L.O. brass cap.

## Corner References:

Spruce	10"	S50°W	15.00 feet
White Birch	12"	S53°E	23.20 feet
Poplar	10"	N83°W	9.90 feet
Steel Sign Post		South	1.00 foot +

9. Angle Point Number 5, Section 5

Corner is monumented by a G.L.O. brass cap.

## Corner References:

White Birch	10"	N60°W	7.15 feet
White Birch	10"	N64°E	13.26 feet
White Birch	8"	S24°E	5.33 feet
Steel Sign Post		South	1.00 foot +

10. North Meander Corner between Section 5 and 6

Corner is monumented by a G.L.O. brass cap. This corner recovered by William B. Cochrane, Registered Land Surveyor - 1107, 1981.

## Corner References:

Cedar	12"	N60°E	53.67 feet
Birch	10"	N2°W	74.72 feet
Steel Sign Post		West	.50 foot

11. South Meander Corner between Section 5 and 6

Corner is monumented by a G.L.O. brass cap. This corner recovered by William B. Cochrane, Registered Land Surveyor - 1107, 1981.

## Corner References:

Red Pine	18"	S9°W	45.20 feet
White Pine	23"	S37°W	20.85 feet
White Pine	18"	S49°E	11.20 feet
Steel Sign Post		Northwesterly	2.00 feet

12. West 1/16 Corner to Section 32 and 5

Corner is monumented by a Forest Service 2" iron pipe with brass cap as established by Jean Resvick in 1979.

## Corner References:

Maple	7"	S13°W	28.30 feet
Maple	11"	N32°W	4.60 feet
Maple	6"	S73°E	28.60 feet
Steel Sign Post		North	.90 feet

Stock No. 26273

Sheet 5 of 8

T 38 N, R 12 E, Section 5

13. Witness Corner to Quarter Corner to Sections 32 and 5

Corner is monumented by a 2" iron pipe with a US General Land Office brass cap set in 1937.

## Corner References:

Maple	9"	N38°E	107.10 feet
White Birch	12"	N46°W	74.30 feet
Maple	9"	N24°W	61.10 feet
Balsam	8"	S30°E	107.90 feet
Steel Sign Post		West	.07 foot

Stock No. 26273

Sheet 6 of 8

N 38 N R 12 E, SECTION 5

CORNERS ESTABLISHED1. South 1/16 to Sections 5-6

Corner is monumented by a 1"x36" aluminum pipe with a 3" aluminum tablet stamped to identify corner. The corner is set on line between the Corner to Sections 5-6-7-8 and the Meander Corner to Sections 5 and 6 on the south side of Julia Lake, at the prorated position between said corners.

## Corner References:

Red Pine	13"	S80°W	37.71 feet
Red Pine	12"	S77°E	26.09 feet
Ash	8"	N2°W	57.83 feet
Steel Sign Post		South	1.00 feet

2. Center 1/4 Corner, Section 5

Corner is monumented by a 1"x36" aluminum pipe with a 3" aluminum tablet stamped to identify corner. The corner is set at the intersection of the North-South 1/4 line and the East-West 1/4 line, Section 5.

## Corner References:

Maple	6"	N27°E	9.85 feet
Balsam	7"	S55°E	18.83 feet
White Birch	12"	S52°W	37.04 feet
Balsam	7"	N80°W	13.77 feet
Steel Sign Post		East	1.00 foot

3. Special Meander Corner, Section 5

Corner is monumented by a 1"x36" aluminum pipe with a 3" aluminum tablet stamped to identify corner. The corner is set at the intersection of the north line of Government Lot and the line between AP1 and AP2, Section 5.

## Corner References:

Poplar	5"	S10°E	6.81 feet
Poplar	5"	N9°W	11.18 feet
Poplar	12"	N72°W	37.70 feet
AP1		S35°37'07"E	62.05 feet
AP2		N35°37'07"W	398.43 feet
Steel Sign Post		Northeast	1.00 foot +

Stock No. 26273

Sheet 7 of 8

4. Special Meander Corner, Section 5

Corner is monumented by a 1"x36" aluminum pipe with a 3" aluminum tablet to identify corner. The corner is set at the intersection of the North-South 1/4 line, Section 5 and the line between AP4 and AP5.

## Corner References:

White Birch	14"	N18°E	22.78 feet
White Birch	9"	S76°E	38.60 feet
White Birch	10"	S30°W	16.39 feet
AP4		S79°17'21"W	194.36 feet
AP5		N79°17'21"E	261.89 feet
Steel Sign Post		East	1.00 foot +

5. Witness Corner for the Quarter Corner to Sections 5, T38N R12E, and Section 32, T39N R12E

Corner is monumented by a 1"x60" aluminum pipe with a 3" aluminum tablet stamped to identify corner. The corner is set 154.75 feet South of the Quarter Corner to Section 5, T38N R12E and Section 32, T39N R12E, and on line between said Quarter Corner and the Quarter line to Sections 5 and 8.

## Corner References:

Spruce	4"	S64°W	26.12 feet
White Birch	4"	West	38.59 feet
Balsam	5"	N67°W	37.18 feet
Center 1/4 Corner		S0°39'22"E	2298.01 feet
Steel Sign Post		East	1.00 foot +

6. Auxiliary Meander Corner to Section 5 on the North Side of Julia Lake

Corner is monumented by a 1"x36" aluminum pipe with a 3" aluminum tablet stamped to identify corner. The corner is set on line between the Special Meander Corner and a point on the bank of Julia Lake. The point on Julia Lake was determined by "Riparian Proportionate Method" as directed by the Forest Service.

## Corner References:

Hemlock	9"	N81°W	21.04 feet
Hemlock	16"	S66°W	31.27 feet
Hemlock	14"	N7°E	15.68 feet
Steel Sign Post		South	1.00 foot +

7. Special Meander Corner to Section 5, North of Julia Lake

Corner is monumented by a 1"x60" aluminum pipe with a 3" aluminum tablet stamped to identify corner. The corner is set at the intersection of the West line of Government Lot 2 and the record meander line along Julia Lake.

## Corner Reference:

Ash	7"	N14°W	15.50 feet
Cedar	6"	N37°E	9.20 feet
White Birch	6"	S16°W	6.51 feet
Steel Sign Post		West	1.00 foot +

