

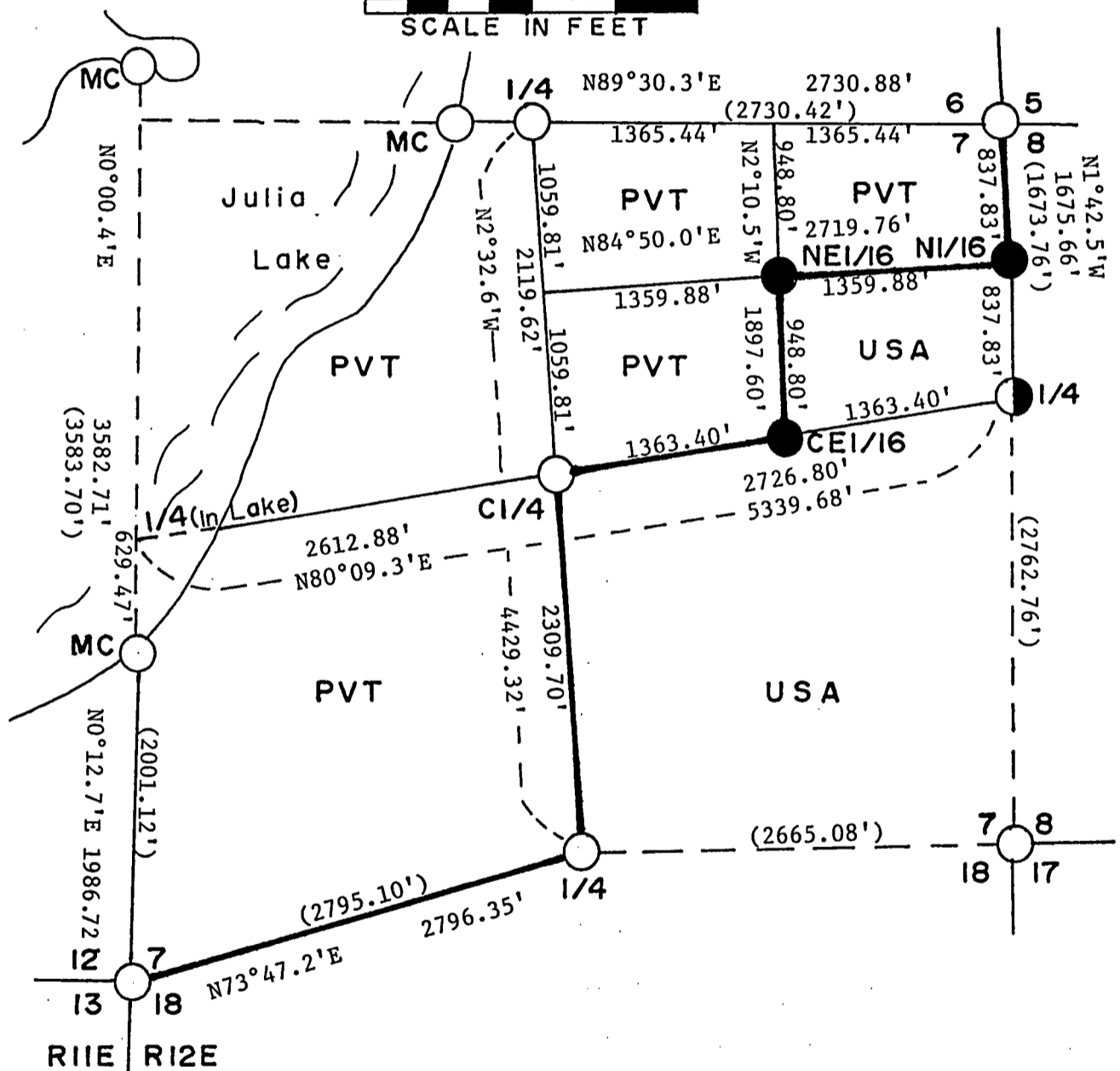
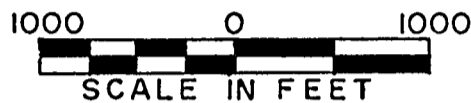
FOREST CO SURVEYOR  
 FILE # 381207-19881000  
 DATE \_\_\_\_\_ BY \_\_\_\_\_

Sheet 1 of 4





# PLAT OF SURVEY U. S. GOVERNMENT LAND

Being The SE1/4; 8 SE1/4, N1/4 of Section 7, Township 38 North, Range 12 East,  
 Fourth Principal Meridian

FOREST COUNTY, WISCONSIN



## LEGEND

-  — Found Dependent Resurvey Monument by G.L.O.  
6" x 24" Concrete Cylinder With Brass Cap
-  — Found Dependent Resurvey Monuments by G.L.O.  
2" x 36" Iron Post With Brass Cap
-  — Set 1" x 36" Drive Type Aluminum Monument
-  — Boundary Line Marked to Standard
- USA** — U.S. Government Lands

Note: (xxx.xx)  
 distances by G.L.O.  
 in 1937.

### Conversion Factors:

Meters to Feet - 3.280833  
 Feet to Meters - .304801

SURVEY NOTES

This survey was made by Milo E. Stefan and party pursuant to the United States Department of Agriculture, Forest Service Contract #53-56A6-8-00187 "Cadastral Survey" for the purpose of subdividing, establishment of corners and marking the boundaries of U. S. Government lands on the perimeter and within Section 7, Township 38 North, Range 12 East, Fourth Principal Meridian, Forest County, Wisconsin as shown on the plat map herewith.

The original government subdivision survey of this township was done in 1859 by William Daugherty. The west side of this section, or Range Line between Ranges 11 and 12, was originally surveyed by Alfred Millard in 1858. A dependent resurvey of the township was done by G.L.O. in 1937. The control for this survey is based on the 1937 G.L.O. dependent resurvey.

The U.S. Government acquired title to lands in Section 7 in 1940 and 1943.

Bearings between corner positions are true bearings by reference to a solar observation. All distances shown thereon are in feet or hundredths of feet. The control traverse was measured by use of electronic distance measuring equipment. Corners recovered, restored and established by this survey are marked by the monument described in the map legend. Each monumented corner position is referenced to blazed bearing trees and described corner references.

CORNERS RECOVERED AND RESTORED1. Section Corner to Sections 7, 12, 13 and 18; T38N, R11-12E

Position found marked by a GLO monument, a 6" x 24" concrete cylinder placed in 1937.

## Corner References:

12"	Sugar Maple	N44°E	22.26 feet
12"	Sugar Maple	N17°W	43.39 feet
10"	Red Pine	S63°W	19.43 feet
11"	Red Pine	S30°E	32.17 feet
	Steel Sign Post	East	1.0 feet

2. Section Corner to Sections 5, 6, 7 and 8; T38N, R12E

Position found marked by a GLO monument, a 6" x 24" concrete cylinder placed in 1937 by Wesson Cook.

## Corner References:

16"	White Birch	S2°E	19.20 feet
12"	White Birch	N76°E	2.85 feet
8"	White Birch	N85°W	8.20 feet
8"	White Birch	N14°E	32.43 feet
	Steel Sign Post	East	0.5 feet

3. Quarter Corner to Sections 6-7, T38N, R12E

Position found marked by a GLO monument, a brass cap in 6" x 24" concrete cylinder placed in 1937.

## Corner References:

26"	Red Pine	S34°E	17.46 feet
24"	Red Pine	N8°W	47.37 feet
10"	Red Pine	S65°E	66.10 feet
10"	White Pine	S77°W	58.90 feet
	Steel Sign Post	Northeast	0.7 feet

4. Quarter Corner to Sections 7-8, T38N, R12E

Position found marked by a GLO monument, a brass cap on a 2" x 36" iron pipe, placed in 1937.

## Corner References:

7"	Red Pine	N43°E	140.60 feet
2"	Black Spruce	S43°E	27.08 feet
2"	Black Spruce	S79°W	8.00 feet
2"	Black Spruce	N28°W	29.80 feet
	Steel Sign Post	Southwest	1.5 feet

5. Quarter Corner to Sections 7-18, T38N, R12E

Position found marked by a GLO monument, a brass cap in a 6" x 24" concrete cylinder, placed in 1937.

## Corner References:

8"	Cedar	N36°E	18.00 feet
7"	Cedar	N66°W	13.61 feet
10"	Cedar	S51°E	8.70 feet
6"	Spruce	N8°E	7.12 feet
	Steel Sign Post	East	1.0 feet

6. Meander Corner between Sections 1-6, T38N, R11-12E

Position found marked by a GLO monument, a brass cap in a 6" x 24" concrete cylinder, placed in 1937.

## Corner References:

24"	White Pine	N10½°E	26.4 feet
6"	Red Pine	N12°E	25.6 feet
4"	White Pine	N86°E	17.4 feet
6"	White Pine	N14°W	6.3 feet
	Steel Sign Post	South	.7 feet

7. Witness Corner Meander Corner between Sections 7-12, T38N, R11-12E

Position found marked by a GLO monument, a brass cap in a 6" x 24" concrete cylinder, set in 1937.

## Corner References:

14"	Hemlock	S47°E	29.70 feet
16"	White Pine	S54°W	38.94 feet
	Northwest Corner of Boathouse	S52°E	25.08 feet
	Steel Sign Post	West	2.3 feet

CORNERS ESTABLISHED1. Center Quarter Corner to Section 7

Position established at the intersection of quarter lines from opposing quarter corners on the exterior of Section 7.

## Corner References:

12"	Hemlock	S30°E	25.12 feet
5"	Sugar Maple	N24°E	27.10 feet
	Steel Sign Post	South	2.4 feet

2. North Sixteenth Corner Between Sections 7-8

Position established on line and midpoint between the East Quarter and Northeast Section Corners to Section 7.

Corner References:

10"	White Pine	S49°W	17.42 feet
6"	Black Spruce	N82°E	14.18 feet
	Steel Sign Post	West	3.9 feet

3. Northeast Sixteenth Corner to Section 7

Position established at the intersection of the North and East Sixteenth lines to Section 7.

Corner References:

16"	Red Pine	N9°E	26.25 feet
14"	Hemlock	N79°W	15.51 feet
	Steel Sign Post	South	1.9 feet

4. Center East Sixteenth Corner to Section 7

Position established on line and at midpoint between the East Quarter and Center Quarter Corners to Section 7.

Corner References:

11"	White Pine	S15°W	32.82 feet
13"	Red Pine	N29°W	15.54 feet
	Steel Sign Post	West	2.5 feet

SURVEYORS AFFIDAVIT

I, Milo E. Stefan, Land Surveyor, registered in the State of Wisconsin, hereby certify: That I have surveyed and subdivided Section 7, T38N, R12E, Fourth Principal Meridian, County of Forest, State of Wisconsin, in accordance with the rules of the survey of public lands and with the statutes of the State of Wisconsin. The plat map and survey notes are an accurate representation of the corners recovered and established.

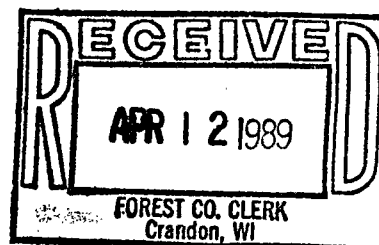
Date of Survey October 1988



*Milo E. Stefan*  
 Milo E. Stefan  
 Registered Land Surveyor  
 State of Wisconsin  
 Certificate #1558

Plat is ready for filing:

*Samuel Ayard*      12/6/88  
 District Ranger      Date



*Dora C. James*