

COPY

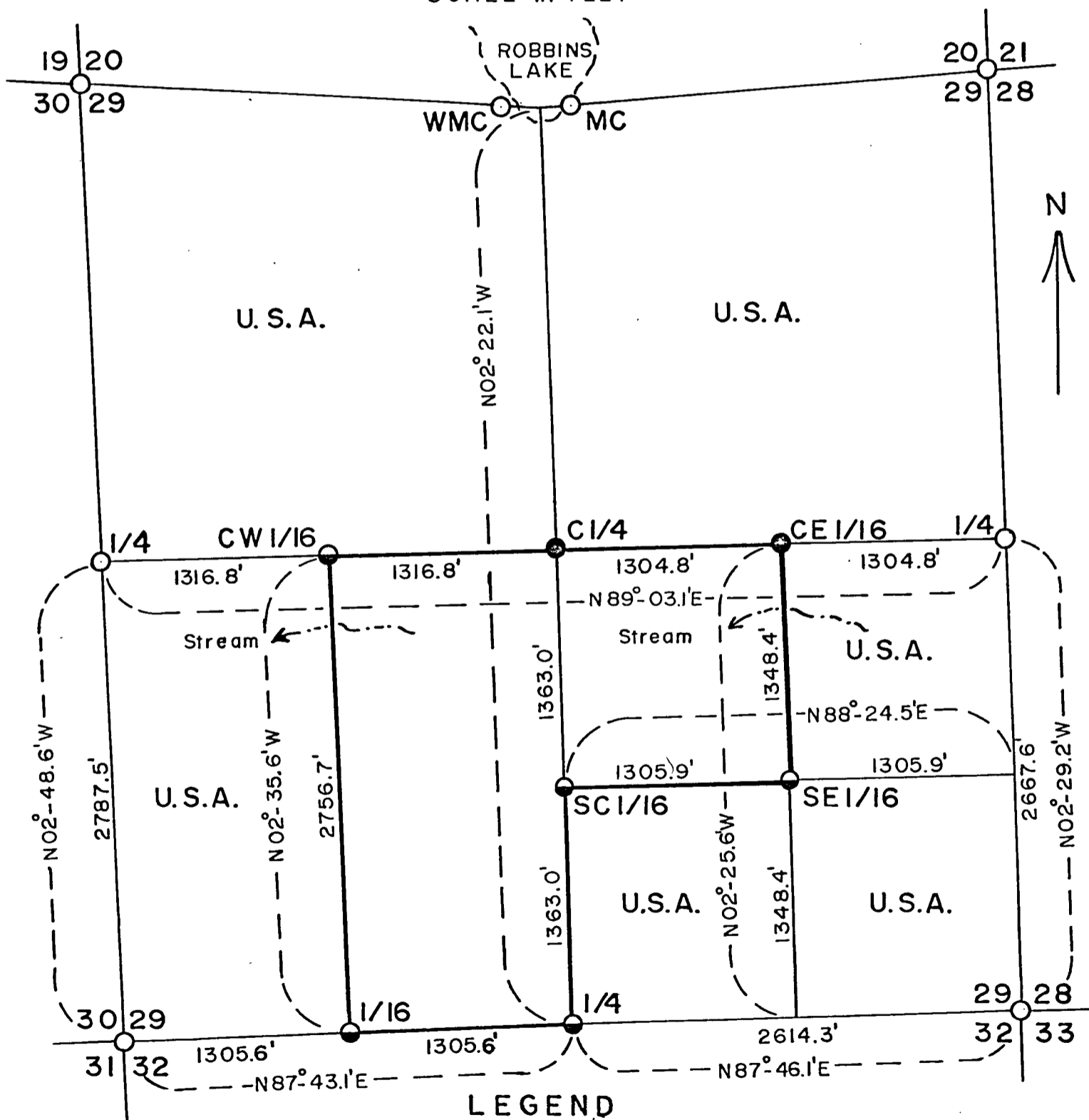
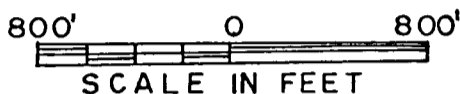
FOREST CO SURVEYOR

FILE # 381229-19760000

DATE \_\_\_\_\_ BY \_\_\_\_\_

## PLAT OF SURVEY U. S. GOVERNMENT LAND

Being W1/2 SW1/4, N1/2, S1/2 SE1/4 and NE1/4 SE1/4 Section 29  
 Township 38 North, Range 12 East, Fourth Principal Meridian  
 FOREST COUNTY, WISCONSIN



### LEGEND

- |   |   |
|---|---|
| <ul style="list-style-type: none"> <li>○ — Bureau of Land Management monument.</li> <li>— — Marked boundary of U.S. Government land.</li> <li>U.S.A. — U.S. Government land.</li> </ul> | <ul style="list-style-type: none"> <li>● — Corner position marked by a 2 inch inside diameter by 3 foot (●) or 5 foot (●) long concrete filled galvanized iron pipe capped with a 3 inch diameter brass tablet stamped to identify corner.</li> </ul> |
|---|---|

COPY

Sheet 2 of 6

# PLAT OF SURVEY U. S. GOVERNMENT LAND

Being W1/2 SW1/4, N1/2, S1/2 SE1/4 and NE1/4 SE1/4 Section 29  
Township 38 North, Range 12 East, Fourth Principal Meridian  
FOREST COUNTY, WISCONSIN

## SURVEY NOTES

This survey was made by the U. S. Department of Agriculture, Forest Service.

The original Government subdivision survey of township 38 north, range 12 east, fourth principal meridian was made in 1859. In 1937 the Bureau of Land Management made a dependent resurvey of the township. The corners recovered from these surveys were used as the control for this subdivision survey of section 29.

The U. S. Government acquired title to the plat identified Government lands within section 29 during the period of 1931-41.

The corner positions recovered and established by this survey are monumented by the monuments described in the map legend.

The bearings between corner positions are true bearings as determined by reference to a Polaris observation. The relative accuracy of the traverse control for corner establishment was one part in 3,000.

The field survey notes and a copy of the plat of survey are on file in the Forest Supervisor's Office at Rhinelander, Wisconsin.

## CORNERS RECOVERED

1. Section Corner to Sections 19-20-29-30, T. 38 N., R. 12 E.  
Corner position restored by 1937 BLM dependent resurvey.  
Corner references established:

Cedar 8"	N.27°E.	16.2 feet
Black Ash 6"	S.27°E.	15.4 feet
Black Ash 6"	S.45°W.	23.8 feet
Cedar 7"	N.34°W.	7.2 feet
Sign Post	N.45°W.	1.0 feet

2. Witness Meander Corner to West Shore of Robbins Lake between Sections 20 and 29, T. 38 N., R. 42 E.  
Corner position established by 1937 BLM dependent resurvey.  
Corner references established:

Cedar 6"	S.20°E.	26.0 feet
Cedar 8"	N.21°W.	32.9 feet
Sign Post	N.45°W.	1.0 feet

COPY

Sheet 3 of 6

# PLAT OF SURVEY U. S. GOVERNMENT LAND

Being W1/2 SW1/4, N1/2, S1/2 SE1/4 and NE1/4 SE1/4 Section 29  
Township 38 North, Range 12 East, Fourth Principal Meridian  
FOREST COUNTY, WISCONSIN

3. Meander Corner to East Shore of Robbins Lake between Sections 20 and 29, T. 38 N., R. 12 E.

Corner position restored by 1937 BLM dependent resurvey.  
BLM corner references found:

Tamarack 6"	N.68°E.	71 links
Cedar 8"	S.29°E.	77 links
Sign Post	N.45°E.	1.0 feet

4. Section Corner to Sections 20-21-28-29, T. 38 N., R. 12 E.  
Corner position restored by 1937 BLM dependent resurvey.  
Corner references established:

White Spruce 5"	N.22°E.	16.9 feet
Red Maple 4"	S.37°E.	23.2 feet
Black Spruce 7"	S.74°W.	31.7 feet
White Spruce 6"	N.52°W.	15.6 feet
Sign Post	N.45°W.	1.0 feet

5. Quarter Corner to Sections 28-29, T. 38 N., R. 12 E.  
Corner position restored by 1937 BLM dependent resurvey.  
Corner references established:

Yellow Birch 7"	N. 5°E.	66.8 feet
Sugar Maple 8"	S.14°W.	23.9 feet
Sign Post	N.45°W.	1.0 feet

6. Section Corner to Sections 28-29-32-33, T. 38 N., R. 12 E.  
Corner position restored by 1937 BLM dependent resurvey.  
BLM corner references found or established:

Sugar Maple 6"	N.75°E.	39.1 feet
White Birch 13"	S.65°E.	27 links
Hemlock 5"	S.32°W.	29.8 feet
Sugar Maple 8"	N.42°W.	62.5 feet
Sign Post	S.45°E.	1.0 feet

7. Quarter Corner to Sections 29-32, T. 38 N., R. 12 E.  
Corner position restored by 1937 BLM dependent resurvey.  
Corner references established:

White Spruce 10"	N.10°W.	43.4 feet
Red Maple 8"	S.81°W.	46.2 feet
Sign Post	N.80°W.	1.0 feet

COPY

Sheet 4 of 6

# PLAT OF SURVEY U. S. GOVERNMENT LAND

Being W1/2 SW1/4, S1/2 SE1/4 and NE1/4 SE1/4 Section 29  
Township 38 North, Range 12 East, Fourth Principal Meridian  
FOREST COUNTY, WISCONSIN

8. Section Corner to Sections 29-30-31-32, T. 38 N., R. 12 E.  
Corner position restored by 1937 BLM dependent resurvey.  
BLM corner references found:

Balsam Fir Snag	N.44 <sup>o</sup> E.	19 links
Cedar 12"	S.33 <sup>o</sup> E.	96 links
Cedar 15"	S.71 <sup>o</sup> W.	58 links
Cedar 17"	N.63 <sup>o</sup> W.	51 links
Sign Post	S.45 <sup>o</sup> W.	1.0 feet

9. Quarter Corner to Sections 29-30, T. 38 N., R. 12 E.  
Corner position restored by 1937 BLM dependent resurvey.  
BLM corner references found or established:

Cedar 8"	S.44 <sup>o</sup> E.	35 links
Black Ash 6"	N.53 <sup>o</sup> E.	17.8 feet
Sign Post	N.45 <sup>o</sup> W.	1.0 feet

## CORNERS ESTABLISHED

1. Center Quarter Corner  
Corner position established at the intersection of straight lines between opposing quarter corners on the perimeter of section 29.  
Corner references:

Cedar 7"	N.32 <sup>o</sup> E.	21.9 feet
Cedar 8"	S.7 <sup>o</sup> W.	22.7 feet
Sign Post	North	1.0 feet

2. Center East Sixteenth Corner  
Corner position established at the midpoint and on line between the east quarter corner and the center quarter corner.  
Corner references established:

Cedar 9"	N.32 <sup>o</sup> E.	17.9 feet
Cedar 8"	S.33 <sup>o</sup> W.	12.0 feet
Sign Post	North	1.0 feet

3. Center West Sixteenth Corner  
Corner position established at the midpoint and on line between the west quarter corner and the center quarter corner.  
Corner references established:

Black Ash 5"	N.67 <sup>o</sup> E.	44.8 feet
Black Ash 7"	S.19 <sup>o</sup> E.	18.3 feet
Cedar 8"	N.32 <sup>o</sup> W.	11.0 feet
Sign Post	N.45 <sup>o</sup> W.	1.0 feet

COPY

Sheet 5 of 6

# PLAT OF SURVEY U. S. GOVERNMENT LAND

Being W1/2 SW1/4, S1/2 SE1/4 and NE1/4 SE1/4 Section 29  
Township 38 North, Range 12 East, Fourth Principal Meridian  
FOREST COUNTY, WISCONSIN

4. Center South Sixteenth Corner

Corner position established at the midpoint and on line between the south quarter corner and the center quarter corner.  
Corner references established:

Cedar 6"	N.34°E.	26.8 feet
Hemlock 9"	S.29°E.	32.9 feet
Red Maple 6"	N.53°W.	5.2 feet
Sign Post	N.45°W.	1.0 feet
4" Squared Post	S.65°E.	97.7 feet

5. Southeast Sixteenth Corner

Corner position established at the intersection of straight lines between the opposing sixteenth corners on the perimeter of the southeast quarter of section 29.  
Corner references established:

Cedar 9"	S.35°E.	17.1 feet
Cedar 14"	S.10°W.	16.8 feet
Hemlock 9"	N.81°W.	25.6 feet
Sign Post	South	1.5 feet
6" Squared Post	S.66°E.	78.0 feet

6. West Sixteenth Corner to Sections 29-32, T. 38 N., R. 12 E.

Corner position established at midpoint and on line between the southwest section corner and the south quarter corner of section 29.  
Corner references established:

Sugar Maple 4"	N.49°E.	30.0 feet
Sugar Maple 6"	S. 8°E.	20.8 feet
Sugar Maple 7"	N.32°W.	30.2 feet
Sign Post	S.45°W.	2.0 feet

### LOCATION OF CORNERS

1. West Meander Corners.

Located proportionately between the witness meander corner for the west meander corner and the east meander corner according to the Dependent Resurvey of 1937. Corner now falls in lake.

2. North Quarter Corner.

Located proportionately between the east and west meander corners, according to the Dependent Resurvey of 1937. Corner falls in lake.

COPY

Sheet 6 of 6

# PLAT OF SURVEY U. S. GOVERNMENT LAND

Being W1/2 SW1/4, N1/2, S1/2 SE1/4 and NE1/4 SE1/4 Section 29  
Township 38 North, Range 12 East, Fourth Principal Meridian  
FOREST COUNTY, WISCONSIN

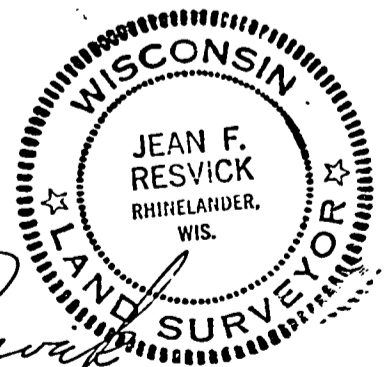
## SURVEYOR'S AFFIDAVIT

STATE OF WISCONSIN) )  
COUNTY OF FOREST ) SS

I, Jean F. Resvick, land surveyor, U. S. Forest Service, and a registered land surveyor in the State of Wisconsin, hereby certify that I have supervised the survey and subdivision of section 29, township 38 north, range 12 east, fourth principal meridian, Forest County, Wisconsin.

The plat map and survey notes herewith are a correct representation of the land surveyed and subdivided. I have reviewed the survey and subdivision of said section 29 in accordance with the rules for the survey of the public lands and the statutes of the State of Wisconsin.

The following U. S. Forest Service personnel, under my supervision, conducted this survey, in the following capacities: Milo E. Stefan, Chief of Party; Anthony Tillman, Chainman. Plat by Milo E. Stefan.



*Jean F. Resvick*  
Land Surveyor, U. S. Forest Service  
R.L.S. State of Wisconsin  
Certificate S-802

Date of Survey: 1976