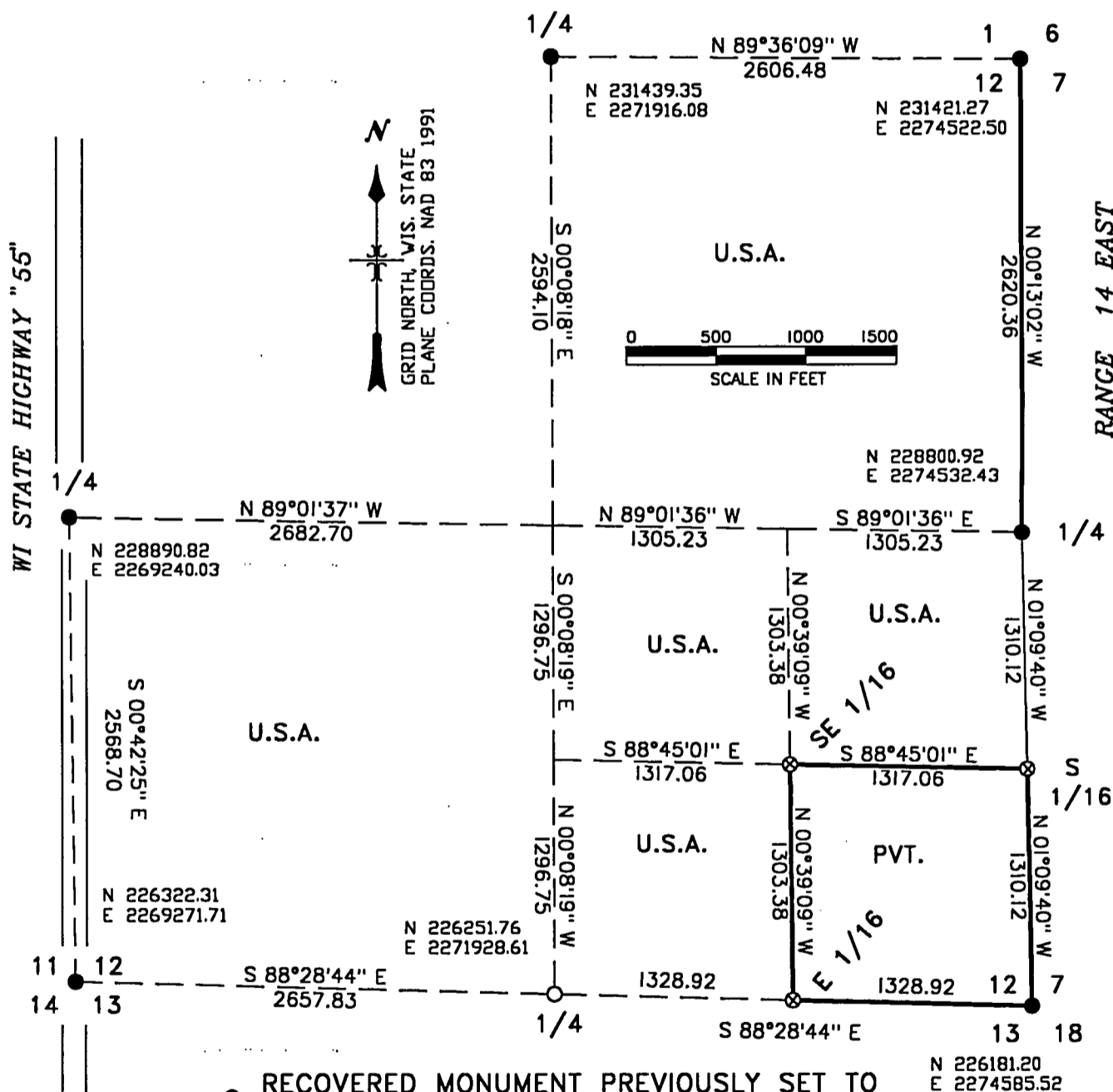


FOREST CO SURVEYOR
FILE # 381312-20070301
DATE _____ BY _____

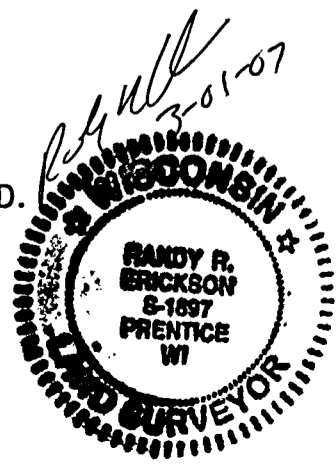
MAP OF SURVEY

U.S. GOVERNMENT LANDS BEING THE WEST 1/2, THE NORTHEAST 1/4, THE NORTH 1/2 SOUTHEAST 1/4, AND SOUTHWEST 1/4 SOUTHEAST 1/4, OF SECTION 12, TOWNSHIP 38 NORTH, RANGE 13 EAST, FOREST COUNTY WISCONSIN.



- RECOVERED MONUMENT PREVIOUSLY SET TO FOREST SERVICE STANDARDS.
- SET A 2" X 36" ALUMINUM MONUMENT WITH 3" ALUMINUM CAP.
- ⊗ SET A 1" X 36" ALUMINUM DRIVE MONUMENT.
- LINE MARKED TO FOREST SERVICE STANDARD.

(E 227458) WISCONSIN NORTH ZONE STATE PLANE COORDINATES, NAD 83, 1991.



SURVEY NOTES
 SECTION 12, T 38 N, R 13 E
 FOREST COUNTY, WISCONSIN

THIS SURVEY WAS MADE BY THE U.S.D.A. FOREST SERVICE AT THE REQUEST OF THE EAGLE RIVER-FLORENCE DISTRICT RANGER OF THE CHEQUAMEGON-NICOLET NATIONAL FOREST. THE PURPOSE OF THIS SURVEY WAS TO RECOVER, RESTORE, ESTABLISH, MARK AND PERPETUATE THE CORNERS AND BOUNDARIES OF U.S. GOVERNMENT LANDS ON THE PERIMETER AND WITHIN SECTION 12, T 38 N, R 13 E, FOREST COUNTY, WISCONSIN.

ORIGINAL SURVEY OF RANGE LINE BETWEEN RANGES 13 AND 14 EAST MADE BY ALFRED MILARD IN 1858. SECTION LINES BY H. AND L. NOWLIN 1865.

SURVEY WAS MADE USING STATIC GPS. BEARINGS AND DISTANCES ARE GRID, BASED ON WISCONSIN NORTH ZONE STATE PLANE COORDINATES.

BEARING TREES ARE BLAZED SCRIBED AND PAINTED WITH RED PAINT. MEASUREMENTS TO BEARING TREES ARE TO ALUMINUM NAILS IN THE SIDE OF TREES ABOVE THE CENTER OF THE ROOT CROWN.

SURVEY MADE IN THE FALL OF 2006.

SURVEY CREW: RANDY ERICKSON, LAND SURVEYOR, DAVID BROWNELL, SURVEY TECHNICIAN.

CORNERS RECOVERED

1. NORTHEAST CORNER SECTION 12, T 38 N, R 13 E.
RECOVERED MONUMENT AS DESCRIBED ON CERTIFIED LAND CORNER RESTORATION FORM, DATED 1993 BY RLS #1107.
2. EAST QUARTER CORNER SECTION 12, T 38 N, R 13 E.
RECOVERED MONUMENT AS DESCRIBED ON CERTIFIED LAND CORNER RESTORATION FORM, DATED 1999 BY RLS #1651.
3. SOUTHEAST CORNER SECTION 12, T 38 N, R 13 E.
RECOVERED MONUMENT AS DESCRIBED ON CERTIFIED LAND CORNER RESTORATION FORM, DATED 1995 BY RLS #1107.
4. SOUTHWEST CORNER SECTION 12, T 38 N, R 13 E.
RECOVERED MONUMENT AS DESCRIBED ON CERTIFIED LAND CORNER RESTORATION FORM, DATED 1992 BY RLS #1107.
5. WEST QUARTER CORNER SECTION 12, T 38 N, R 13 E.
RECOVERED MONUMENT AS DESCRIBED ON CERTIFIED LAND CORNER RESTORATION FORM, DATED 1992 BY RLS #1107.
6. NORTHWEST CORNER SECTION 12, T 38 N, R 13 E.
RECOVERED MONUMENT AS DESCRIBED ON CERTIFIED LAND CORNER RESTORATION FORM, DATED 1992 BY RLS #1107.
7. NORTH QUARTER CORNER SECTION 12, T 38 N, R 13 E.
RECOVERED MONUMENT AS DESCRIBED ON CERTIFIED LAND CORNER RESTORATION FORM, DATED 1992 BY RLS #1107.





Stock No. 26273

CORNERS RESTORED

- I. SOUTH QUARTER CORNER SECTION 12, T 38 N, R 13 E.
RESTORED CORNER MID POINT ON LINE BETWEEN THE SOUTHEAST AND
SOUTHWEST CORNERS OF SECTION 12. SET A 2" X 36" ALUMINUM
PIPE MONUMENT WITH A 3" ALUMINUM CAP STAMPED TO IDENTIFY THE
CORNER. MONUMENT EXTENDS 6" ABOVE GROUND. MARKED B.T.S:
- | | | | |
|-----------------|-----|---------|------------|
| SUGAR | 13" | S 64° E | 23.88 FEET |
| SUGAR | 12" | S 12° W | 24.38 FEET |
| SUGAR | 8" | N 62° W | 27.65 FEET |
| STEEL SIGN POST | | NORTH | 0.9 FEET |

CORNERS ESTABLISHED

- I. SOUTHEAST 1/16 CORNER, SECTION 12, T 38 N, R 13 E.
ESTABLISHED CORNER AT INTERSECTION OF STRAIGHT LINES BETWEEN
OPPOSING 1/16 CORNERS ON THE PERIMETER OF THE SOUTHEAST 1/4
OF SECTION 12. SET A 1" X 36" ALUMINUM DRIVE MONUMENT WITH
A 2" ALUMINUM CAP STAMPED TO IDENTIFY THE CORNER. MONUMENT
EXTENDS 6" ABOVE GROUND. MARKED BEARING TREES:
- | | | | |
|-----------------|-----|-----------|------------|
| RED MAPLE | 14" | S 34° W | 7.02 FEET |
| RED MAPLE | 9" | N 78° W | 23.25 FEET |
| STEEL SIGN POST | | NORTHWEST | 0.7 FEET |
2. SOUTH 1/16 CORNER, SECTION 12, T 38 N, R 13 E.
ESTABLISHED CORNER MID POINT ON LINE BETWEEN THE EAST 1/4
AND SOUTHEAST CORNERS OF SECTION 12. SET A 1" X 36" ALUM.
DRIVE IN MONUMENT WITH A 2" ALUMINUM CAP STAMPED TO IDENTIFY
THE CORNER. MONUMENT EXTENDS 6" ABOVE GROUND. MARKED B.T.S:
- | | | | |
|-----------------|-----|-----------|------------|
| ASPEN | 14" | N 18° E | 4.68 FEET |
| WHITE SPRUCE | 9" | S 72° W | 23.27 FEET |
| STEEL SIGN POST | | NORTHEAST | 0.6 FEET |
3. EAST 1/16 CORNER SECTIONS 12 AND 13, T 38 N, R 13 E.
ESTABLISHED CORNER MID POINT ON LINE BETWEEN THE SOUTH 1/4
AND SOUTHEAST CORNERS OF SECTION 12. SET A 1" X 36" ALUM.
DRIVE IN MONUMENT WITH A 2" ALUMINUM CAP STAMPED TO IDENTIFY
THE CORNER. MONUMENT EXTENDS 6" ABOVE GROUND. MARKED B.T.S:
- | | | | |
|-----------------|----|---------|------------|
| WHITE SPRUCE | 6" | S 80° E | 17.02 FEET |
| BALSAM | 6" | N 25° W | 7.53 FEET |
| STEEL SIGN POST | | WEST | 0.75 FEET |

SURVEYORS AFFIDAVIT

STATE OF WISCONSIN)
COUNTY OF FOREST } SS

I RANDY R. ERICKSON, LAND SURVEYOR FOR THE U.S.D.A. FOREST
SERVICE AND A REGISTERED LAND SURVEYOR IN THE STATE OF WISCONSIN,
DO HEREBY CERTIFY THAT I HAVE SURVEYED AND SUBDIVIDED SECTION 12,
TOWNSHIP 38 NORTH, RANGE 13 EAST, 4TH P.M., FOREST COUNTY
WISCONSIN. DURING THIS SURVEY, I HAVE COMPLIED WITH THE RULES
FOR THE DIVISION OF THE PUBLIC LANDS. THE MAP AND ACCOMPANYING
NOTES ARE CORRECT AND ACCURATE TO THE BEST OF MY KNOWLEDGE AND
BELIEF.

RANDY R. ERICKSON
WIS. REGISTERED LAND SURVEYOR #1897

DATE: 03-01-2007

