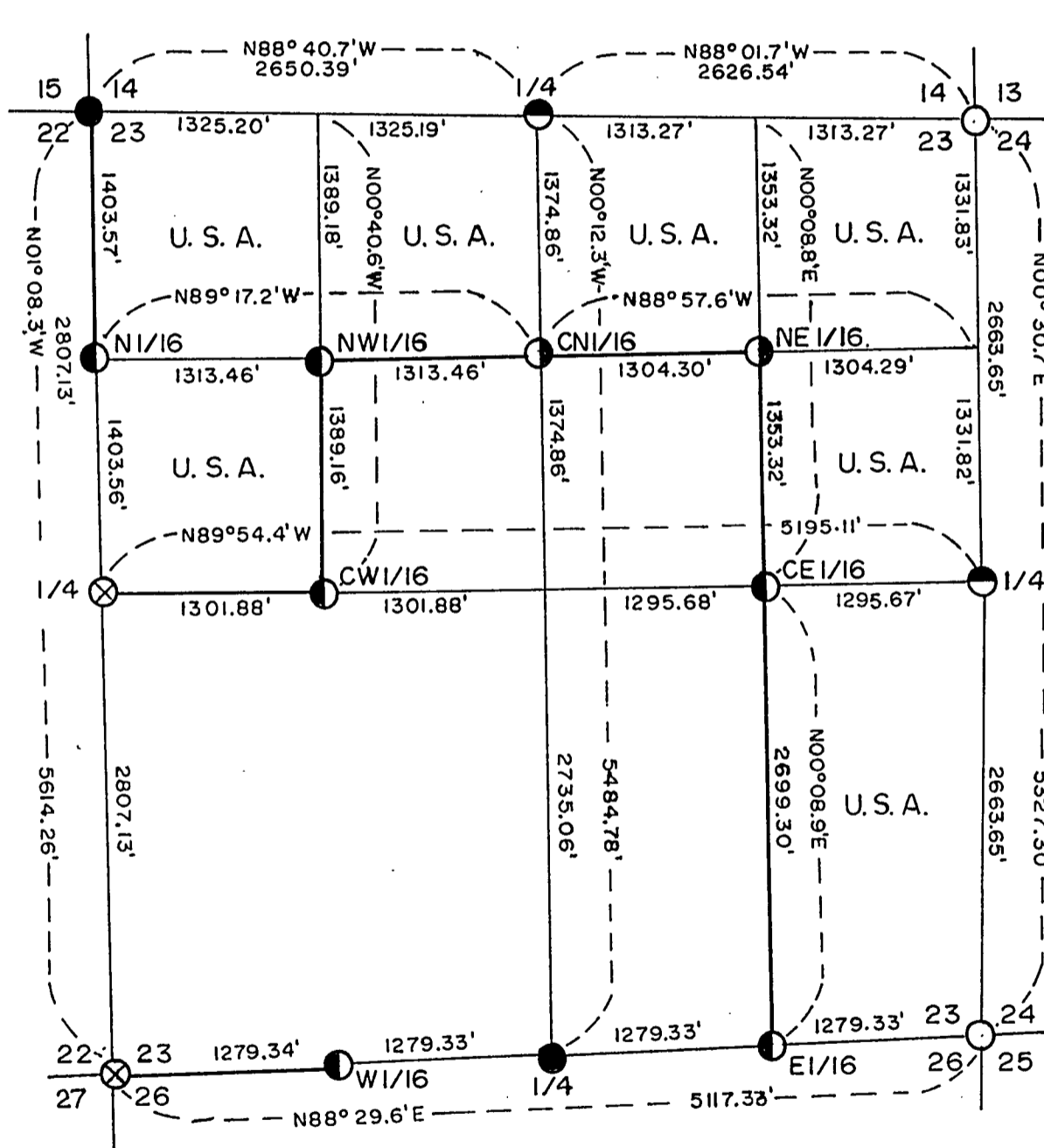
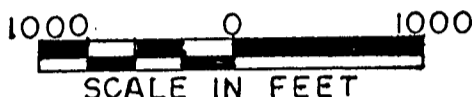


PLAT OF SURVEY

U. S. GOVERNMENT LANDS

Being the W1/2, NW1/4; NE1/4, NW1/4; N1/2, NE1/4; SE1/4, NE1/4 and E1/2, SE1/4 of Section 23, Township 38 North, Range 13 East, Fourth Principal Meridian FOREST COUNTY, WISCONSIN



LEGEND

- 2" X 60" Iron Pipe With Brass Cap
- 2 1/2" X 60" Aluminum Monument
- ◐ 2 1/2" X 36" Aluminum Monument
- ◑ 1" X 36" Aluminum Monument
- ◒ 1" X 60" Aluminum Monument
- ⊗ Railroad Spike In Road Surface
- Marked Boundary Lines, U. S. Government Lands

FOREST CO SURVEYOR
 FILE # 381323-19900000
 DATE _____ BY _____

Conversion Factors:
 Feet to Meters-3.280833
 Meters to Feet-0.304801

Stock No. 26273

Sheet 2 of 5

SURVEY NOTES

This survey was made by Milo E. Stefan, a Registered Land Surveyor in the state of Wisconsin, under contract to the U. S. Department of Agriculture, Forest Service, for the purpose of restoring and establishing corners on the perimeter of Section 23, for establishing boundaries of U. S. Government land on the perimeter and within Section 23, Township 38 North, Range 13 East, Fourth Principal Meridian, Forest County, Wisconsin.

The U. S. Government Lands in this Section were acquired in 1936.

The original Government subdivision survey of this township was made in 1965 by H. and J. L. Nowlin.

The corner positions recovered, restored and established by this survey are marked by the monument described in the map legend.

The corner positions established were located to an accuracy of one part in 3000.

The bearings between corner positions are true bearings as determined by solar observations. Orientation for this survey is by solar observations by the Forest Service on the west half of the south line of Section 26. The field notes of this survey and a copy of this plat are on file in the Forest Supervisor's Office at Rhinelander, Wisconsin.

CORNERS RECOVERED AND RESTORED

1. Section Corner to Sections 14, 15, 22 and 23, T.38N., R.13E.
Corner monumented by Milo E. Stefan, R.L.S. Certificate on file in Forest County, Document No. 124235.
2. Section Corner to Sections 13, 14, 23 and 24, T.38N., R.13E.
Corner monumented by Jean F. Resvick, R.L.S. Certificate on file in Forest County, Document No. 99716.
3. Section Corner to Sections 22, 23, 26, and 27, T.38N., R.13E.
Corner monumented by Milo E. Stefan, R.L.S. Certificate on file in Forest County, Document No. 127213.
4. Section Corner to Sections 23, 24, 25 and 26, T.38N., R.13E.
Corner monumented by Jean F. Resvick, R.L.S. Certificate on file in Forest County, Document No. 105814.
5. Quarter Corner to Sections 14 and 23, T.38N., R.13E.
Corner monumented by Milo E. Stefan, R.L.S., in 1983. We destroyed a bearing tree in this survey, therefore, took two new bearing trees.
Corner references:

Sugar Maple	6"	N13°E	37.94 Feet
Sugar Maple	6"	N50°E	14.22 Feet
Sugar Maple	12"	S38°W	42.71 Feet
Sugar Maple	13"	N73°W	61.73 Feet
Steel Sign Post		Southeast	1.40 Feet

Stock No. 26273

Sheet 3 of 5

6. Quarter Corner to Sections 22 and 23, T.38N., R.13E.

We restored this corner by proportionate measure between the Section Corners North and South. Corner position falls in State Highway 55.

Corner references:

Sugar Maple	6"	N58°E	79.40 Feet
Sugar Maple	10"	S73°E	56.26 Feet
Sugar Maple	6"	S75°W	89.28 Feet
Sugar Maple	6"	N39°W	68.74 Feet
Reference Corner	2½" x 36" Aluminum Monument West 49.78 Feet		
Steel Sign Post	West of R.C. 1.6 Feet		

7. Quarter Corner to Sections 23 and 24, T.38N., R.13E.

We restored this corner by proportionate measure between the Section Corners North and South.

Corner references:

Sugar Maple	10"	S56°E	12.64 Feet
Sugar Maple	5"	S13°E	21.97 Feet
Sugar Maple	6"	S46°W	45.69 Feet
Sugar Maple	6"	N14°W	49.92 Feet
Steel Sign Post		Southwest	.90 Foot

8. Quarter Corner to Sections 23 and 26, T.38N., R.13E.

We restored this corner by proportionate measure between the Section Corners East and West.

Corner references:

Cedar	10"	N77°E	15.11 Feet
Cedar	8"	North	18.23 Feet
Cedar	10"	S45°W	21.30 Feet
Cedar	10"	N66°W	19.52 Feet
Steel Sign Post		Northeast	1.40 Feet

CORNERS ESTABLISHED1. North Sixteenth Corner Between Sections 22 and 23, T.38N., R.13E.

We established this corner at midpoint and on line between the Northwest Section Corner and the West Quarter Corner to Section 23.

Corner references:

Sugar Maple	7"	N46°E	14.33 Feet
Sugar Maple	8"	S38°E	4.94 Feet
Sugar Maple	6"	N02°W	13.64 Feet
Steel Sign Post		Northeast	.80 Foot

2. West Sixteenth Corner Between Sections 23 and 26, T.38N., R.13E.

We established this corner at midpoint and on line between the Southwest Section Corner and the South Quarter Corner to Section 23.

Corner references:

Sugar Maple	10"	S82°E	23.41 Feet
Sugar Maple	8"	S46°W	5.45 Feet
Sugar Maple	9"	S54°W	19.29 Feet
Steel Sign Post		Southwest	1.90 Feet

3. East Sixteenth Corner Between Sections 23 and 26, T.38N., R.13E.

We established this corner at midpoint and on line between the Southeast Section Corner and the South Quarter Corner to Section 23.

Corner references:

Sugar Maple	6"	S13°E	48.22 Feet
Black Ash	12"	S66°W	56.32 Feet
Sugar Maple	10"	N11°W	17.36 Feet
Steel Sign Post		Northeast	1.60 Feet

Stock No. 26273

Sheet 4 of 5

4. Northwest Sixteenth Corner to Section 23, T.38N., R.13E.
We established this corner at the intersection of the North and West Sixteenth Lines to Section 23.
Corner references:
- | | | | |
|-----------------|----|-----------|------------|
| Sugar Maple | 6" | N24°E | 24.48 Feet |
| Sugar Maple | 6" | S15°E | 23.98 Feet |
| Sugar Maple | 5" | S48°W | 8.65 Feet |
| Steel Sign Post | | Southwest | 1.20 Feet |
5. Center North Sixteenth Corner to Section 23, T.38N., R.13E.
We established this corner at midpoint and on line between the North Quarter Corner and the Center Quarter Corner to Section 23.
Corner references:
- | | | | |
|-----------------|----|-----------|------------|
| Cedar | 8" | N61°E | 17.01 Feet |
| Black Ash | 4" | S03°E | 5.20 Feet |
| Yellow Birch | 8" | S77°W | 31.38 Feet |
| Steel Sign Post | | Southwest | .90 Foot |
6. Northeast Sixteenth Corner to Section 23, T.38N., R.13E.
We established this corner at the intersection of the North and East Sixteenth Lines to Section 23.
Corner references:
- | | | | |
|-----------------|-----|-----------|------------|
| Yellow Birch | 6" | N05°E | 4.50 Feet |
| Red Maple | 10" | S43°E | 47.98 Feet |
| Red Maple | 12" | S47°W | 29.43 Feet |
| Steel Sign Post | | Northeast | 1.00 Feet |
7. Center East Sixteenth Corner to Section 23, T.38N., R.13E.
We established this corner at midpoint and on line between the East Quarter Corner and the Center Quarter Corner to Section 23.
Corner references:
- | | | | |
|-----------------|----|-----------|------------|
| White Spruce | 6" | N27°E | 32.07 Feet |
| Black Ash | 5" | S74°E | 19.47 Feet |
| Black Ash | 4" | S42°W | 8.11 Feet |
| Steel Sign Post | | Southeast | 1.10 Feet |
8. Center West Sixteenth Corner to Section 23, T.38N., R.13E.
We established this corner at midpoint and on line between the West Quarter Corner and the Center Quarter Corner to Section 23.
Corner references:
- | | | | |
|-----------------|----|-----------|------------|
| Sugar Maple | 6" | S84°E | 31.48 Feet |
| Sugar Maple | 6" | S60°W | 16.17 Feet |
| Sugar Maple | 8" | N26°W | 36.52 Feet |
| Steel Sign Post | | Southwest | 1.20 Feet |

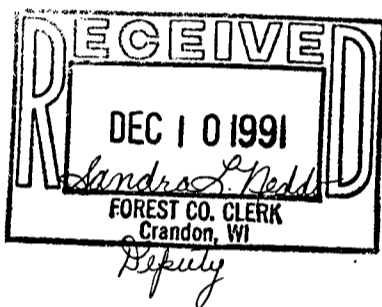
Stock No. 26273

Sheet 5 of 5

SURVEYOR'S AFFIDAVITSTATE OF WISCONSIN)
FOREST COUNTY)SS

I, Milo E. Stefan, Registered Land Surveyor in the State of Wisconsin hereby certify: that I have surveyed and subdivided Section 23, Township 38 North, Range 13 East, Fourth Principal Meridian, Forest County, Wisconsin.

The Plat Map and notes are a correct representation of the corners recovered, restored and established. I have restored and recovered and established these corners in accordance with the rules of survey of the public lands and with the Statutes of the State of Wisconsin.



Milo E. Stefan

Milo E. Stefan, RLS No. 1558
Rhineland, Wisconsin

Date of Survey: 1990



Plat ready for filing:

Paul B. Stage
District Ranger