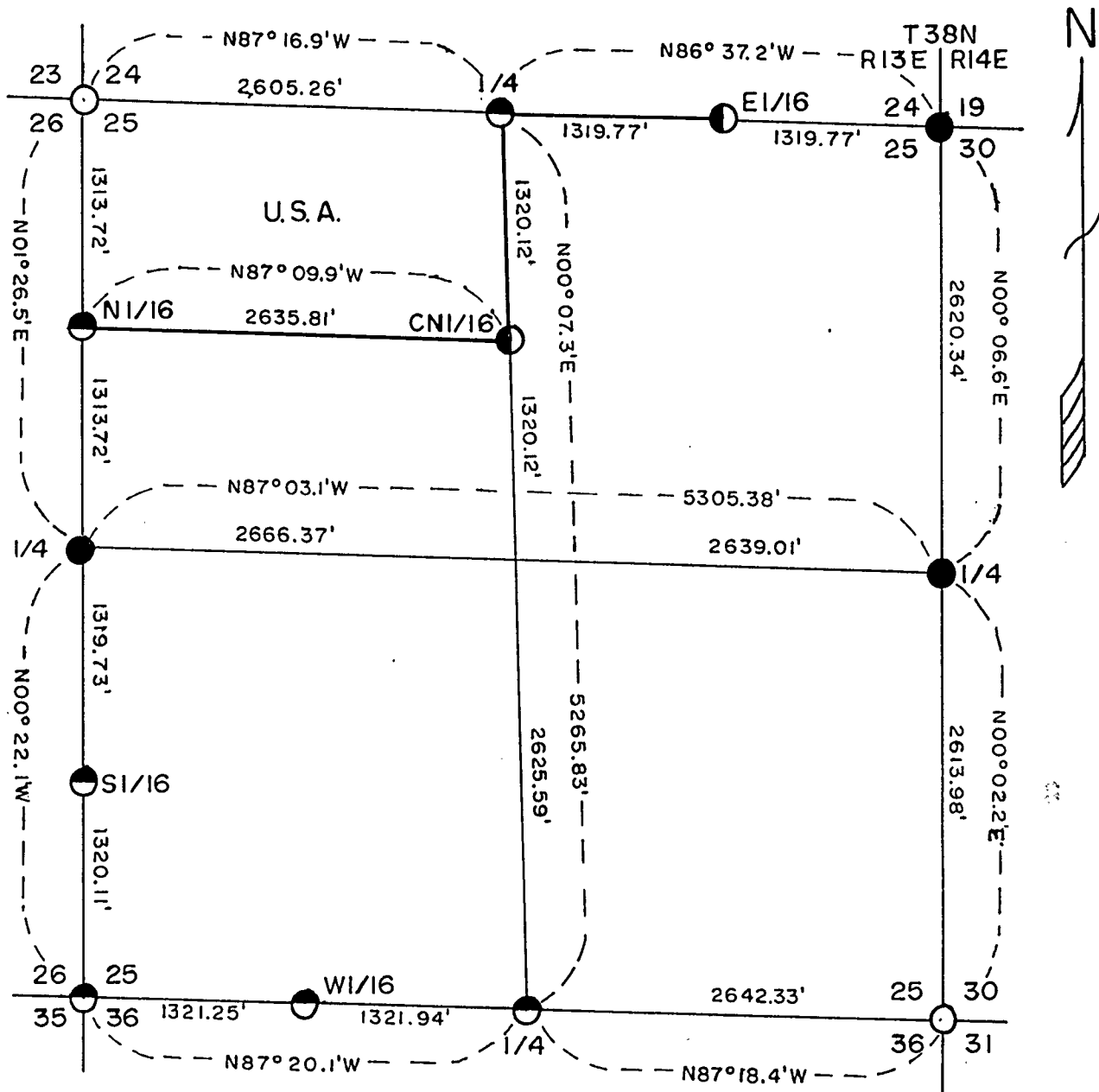
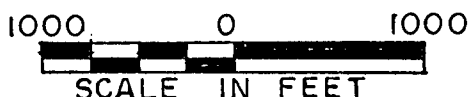


PLAT OF SURVEY

U. S. GOVERNMENT LANDS

Being the N1/2, NW1/4 of Section 25

Township 38 North, Range 13 East, Fourth Principal Meridian
FOREST COUNTY, WISCONSIN



LEGEND

- 2" X 60" Iron Pipe With Brass Cap
- 2 1/2" X 60" Aluminum Monument
- ◐ 2 1/2" X 36" Aluminum Monument
- ◑ 1" X 36" Aluminum Monument

Marked Boundary Lines, U. S. Government Lands

FOREST CO SURVEYOR
FILE # 381325-199D0000
DATE _____ BY _____

Conversion Factors:
Feet to Meters-3.280833
Meters to Feet-0.304801

Stock No. 26273

Sheet 2 of 4

SURVEY NOTES

This survey was made by Milo E. Stefan, a Registered Land Surveyor in the State of Wisconsin, under contract to the U. S. Department of Agriculture, Forest Service, for the purpose of restoring and establishing corners on the perimeter of Section 25, for establishing the boundaries of U. S. Government land on the perimeter and within Section 25, Township 38 North, Range 13 East, Fourth Principal Meridian, Forest County, Wisconsin.

The U. S. Government Lands in this Section were acquired in 1936.

The original Government subdivision survey of this township was made in 1865 by H. and J. L. Nowlin. The range line was surveyed by Alfred Millard in 1858.

The corner positions recovered, restored and established by this survey are marked by the monument described in the map legend.

The corner positions established were located to an accuracy of one part in 3000.

The bearings between corner positions are true bearings as determined by solar observations. Orientation for this survey is by solar observations by the Forest Service on the west half of the south line of Section 26. The field notes of this survey and a copy of this plat are on file in the Forest Supervisor's Office at Rhinelander, Wisconsin.

CORNERS RECOVERED AND RESTORED

1. Section Corner to Sections 23, 24, 25 and 26, T.38N., R.13E.
Corner monumented by Jean F. Resvick, R.L.S. Certificate on file in Forest County, Document No. 105814.
2. Section Corner to Sections 19, 24, 25 and 30, T.38N., R.13-14E.
Corner monumented by Phillip Hansen in 1977. Monument very unstable. We replaced the short monument and took new references.
Corner references:

Cedar	9"	S62°E	32.80 Feet
Cedar	5"	S22°W	26.60 Feet
Cedar	10"	S76°W	14.05 Feet
Cedar	6"	N30°W	25.78 Feet
Steel Sign Post		Northwest	1.0 Feet
3. Section Corner to Sections 25, 26, 35 and 36, T.38N., R.13E.
Corner monumented by Milo E. Stefan, R.L.S. Certificate on file in Forest County, Document No. 131265.
4. Section Corner to Sections 25, 30, 31 and 36, T.38N., R.13-14E.
Corner monumented by Jean F. Resvick, R.L.S. Certificate on file in Forest County, Document No. 92683.
5. Quarter Corner to Sections 24 and 25, T.38N., R.13E.
Corner monumented by Milo E. Stefan, R.L.S. Certificate on file in Forest County, Document No. 124237.

Stock No. 26273

Sheet 3 of 4

6. Quarter Corner to Sections 25 and 26, T.38N., R.13E.
Corner monumented by Milo E. Stefan, R.L.S. Certificate on file in Forest County, Document No. 131264.
7. Quarter Corner to Sections 25 and 30, T.38N., R.13-14E.
Corner monumented by Phillip Hansen in 1977. Monument very unstable. We replaced the short monument and took new references.
Corner references:
- | | | | |
|-----------------|-----|-----------|------------|
| Cedar | 7" | N60°E | 13.12 Feet |
| Cedar | 10" | S48°E | 50.82 Feet |
| Cedar | 9" | S76°W | 16.98 Feet |
| Cedar | 8" | S15°E | 51.34 Feet |
| Steel Sign Post | | Northwest | .60 Foot |
8. Quarter Corner to Sections 25 and 36, T.38N., R.13E.
Corner monumented by Milo E. Stefan, R.L.S. Certificate on file in Forest County, Document No. 131263.
9. South Sixteenth Corner to Sections 25 and 26, T.38N., R.13E.
Corner position found marked with an aluminum monument as set by Milo E. Stefan, R.L.S. and recorded with the Forest County Clerk October 8, 1986.
10. West Sixteenth Corner to Sections 25 and 36, T.38N., R.13E.
Corner position found marked with an aluminum monument as set by Milo E. Stefan, R.L.S. and recorded with the Forest County Clerk October 8, 1986.

CORNERS ESTABLISHED

1. East Sixteenth Corner Between Sections 24 and 25, T.38N., R.13E.
We established this corner at midpoint and on line between the Northeast Section Corner and the North Quarter Corner to Section 25.
Corner references:
- | | | | |
|-----------------|-----|-----------|------------|
| Cedar | 14" | N87°E | 40.87 Feet |
| Hemlock | 11" | S03°W | 10.82 Feet |
| Hemlock | 13" | N39°W | 15.75 Feet |
| Steel Sign Post | | Northwest | 1.10 Feet |
2. North Sixteenth Corner Between Sections 25 and 26, T.38N., R.13E.
We established this corner at midpoint and on line between the Northwest Section Corner and the West Quarter Corner to Section 25.
Corner references:
- | | | | |
|-----------------|----|-----------|------------|
| Sugar Maple | 8" | S53°E | 28.02 Feet |
| Sugar Maple | 8" | S78°E | 8.57 Feet |
| Sugar Maple | 9" | N63°W | 18.03 Feet |
| Steel Sign Post | | Southeast | 3.80 Feet |
3. Center North Sixteenth Corner to Section 25, T.38N., R.13E.
We established this corner at midpoint and on line between the North Quarter Corner and the Center Quarter Corner to Section 25.
Corner references:
- | | | | |
|-----------------|-----|-----------|------------|
| Sugar Maple | 7" | S09°W | 18.08 Feet |
| Cedar | 12" | S83°W | 38.63 Feet |
| Sugar Maple | 6" | N54°W | 47.17 Feet |
| Steel Sign Post | | Northwest | .90 Foot |

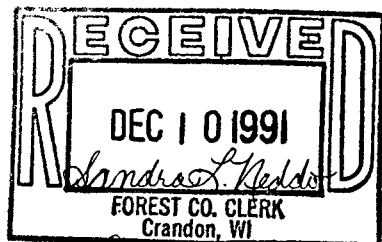
Stock No. 26273

Sheet 4 of 4

SURVEYOR'S AFFIDAVITSTATE OF WISCONSIN)
FOREST COUNTY)SS

I, Milo E. Stefan, Registered Land Surveyor in the State of Wisconsin hereby certify: that I have surveyed and subdivided Section 25, Township , 38 North, Range 13 East, Fourth Principal Meridian, Forest County, Wisconsin.

The Plat Map and notes are a correct representation of the corners recovered, restored and established. I have restored and recovered and established these corners in accordance with the rules of survey of the public lands and with the Statutes of the State of Wisconsin.



Milo E. Stefan

Milo E. Stefan, RLS No. 1558
Rhineland, Wisconsin

Date of Survey: 1990



Plat ready for filing:

Walter S. Stange
District Ranger