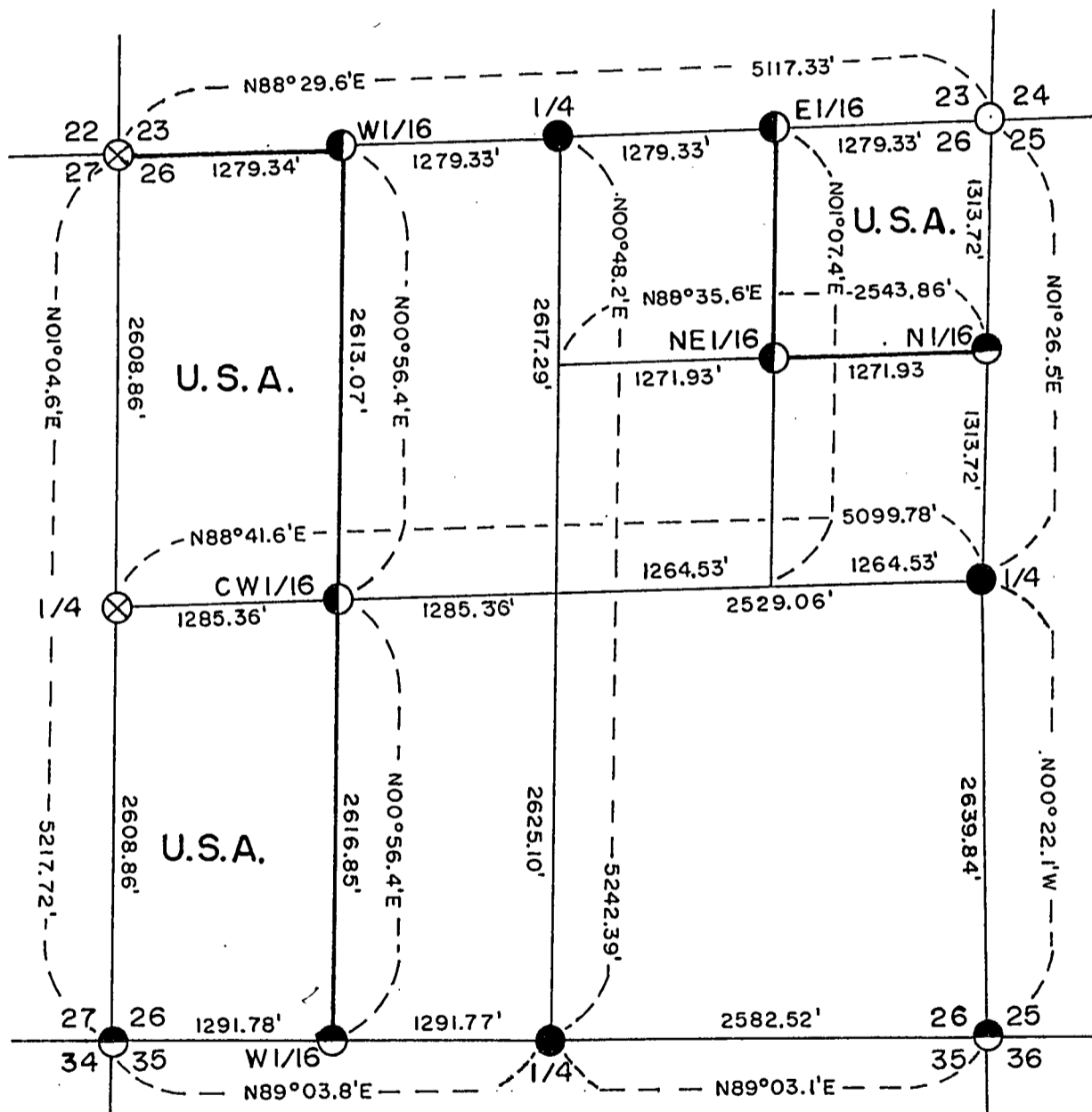
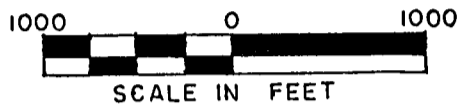




# PLAT OF SURVEY U. S. GOVERNMENT LANDS

Being the W1/2, SW1/4; W1/2, NW1/4; and NE1/4, NE1/4 of Section 26  
Township 38 North, Range 13 East, Fourth Principal Meridian  
FOREST COUNTY, WISCONSIN



### LEGEND

- 2" X 60" Iron Pipe With Brass Cap
- 2 1/2" X 60" Aluminum Monument
- ◐ 2 1/2" X 36" Aluminum Monument
- ◑ 1" X 60" Aluminum Monument
- ◒ 1" X 36" Aluminum Monument
- ⊗ Railroad Spike In Road Surface

FOREST CO SURVEYOR

FILE # 381326-19900000

DATE \_\_\_\_\_ BY \_\_\_\_\_

Conversion Factors:  
Feet to Meters — 3.280833  
Meters to Feet — 0.304801

— Marked Boundary Lines, U. S. Government Lands

Stock No. 26273

Sheet 2 of 4

SURVEY NOTES

This survey was made by Milo E. Stefan, a Registered Land Surveyor in the State of Wisconsin, under contract to the U. S. Department of Agriculture, Forest Service, for the purpose of restoring and establishing corners on the perimeter of Section 26, for establishing the boundaries of U. S. Government land on the perimeter and within Section 26, Township 38 North, Range 13 East, Fourth Principal Meridian, Forest County, Wisconsin.

The U. S. Government lands in this Section were acquired in 1934.

The original Government subdivision survey of this township was made in 1865 by H. & J. L. Nowlin.

The corner positions recovered, restored and established by this survey are marked by the monument described in the map legend.

The corner positions established were located to an accuracy of one part in 3000.

The bearings between corner positions are true bearings as determined by solar observations. Orientation for this survey is by solar observations by the Forest Service on the west half of the south line of Section 26. The field notes of this survey and a copy of this plat are on file in the Forest Supervisor's Office at Rhinelander, Wisconsin.

CORNERS RECOVERED AND RESTORED

1. Corner to Sections 22, 23, 26 and 27, T.38N., R.13E.  
Corner monumented by Milo E. Stefan, R.L.S. Certificate on file in Forest County, Document Number 127213.
2. Corner to Sections 23, 24, 25 and 26, T.38N., R.13E.  
Corner monument by Jean F. Resvick, R.L.S. Certificate on file in Forest County, Document Number 105814.
3. Corner to Sections 26, 27, 34 and 35, T.38N., R.13E.  
Corner monumented by Milo E. Stefan, R.L.S. Certificate on file in Forest County, Document Number 127212.
4. Corner to Sections 25, 26, 35 and 36, T.38N., R.13E.  
Corner monumented by Milo E. Stefan, R.L.S. Certificate on file in Forest County, Document Number 131265.
5. Quarter Corner to Sections 25 and 26, T.38N., R.13E.  
Corner monumented by Milo E. Stefan, R.L.S. Certificate on file in Forest County, Document Number 131264.
6. Quarter Corner to Sections 26 and 35, T.38N., R.13E.  
Corner monumented by Kim Pritzlaff, R.L.S. Certificate on file in Forest County, Document Number 128589.
7. Quarter Corner to Sections 23 and 26, T.38N., R.13E.  
Restored this corner by single proportionate measure after searching for bearing tree evidence and determining the position to be lost.  
Corner references:
 

Cedar	10"	N 77°E	15.11 Feet
Cedar	8"	North	18.23 Feet
Cedar	10"	S 45°W	21.30 Feet
Cedar	10"	N 66°W	19.52 Feet
Steel Sign Post		Northeast	1.4 Feet



Stock No. 26273

Sheet 3 of 4

8. Quarter Corner to Sections 26 and 27, T.38N., R.13E.

Restored this corner by single proportionate measure after searching for bearing tree evidence and determining the position to be lost.

Corner references:

Sugar Maple	6"	N 57°E	63.75 Feet
Sugar Maple	6"	S 38°E	91.47 Feet
Red Maple	6"	S 47°W	78.60 Feet
Black Ash	6"	N 46°W	68.16 Feet
Reference Corner	2½" x 36" Aluminum Monument Easterly 33.00 Feet		
Steel Sign Post		East of R.C.	1.30 Feet

9. West Sixteenth Corner Between Sections 26 and 35, T.38N., R.13E.

Corner position found marked with an aluminum monument as set by Kim Pritzlaff, R.L.S. Position in error and in consultation with Kim Pritzlaff and the Forest Service we moved this corner to its proper position and took new ties.

Corner references:

Hemlock	15"	S 84°E	25.20 Feet
Hemlock	10"	S 28°E	57.58 Feet
Hemlock	13"	S 85°W	51.19 Feet
Steel Sign Post		Southwest	1.00 Foot

CORNERS ESTABLISHED1. West Sixteenth Corner Between Sections 23 and 26, T.38N., R.13E.

We established this corner at midpoint and on line between the Northwest Section Corner and North Quarter Corner to Section 26.

Corner references:

Sugar Maple	10"	S 82°E	23.41 Feet
Sugar Maple	8"	S 46°W	5.45 Feet
Sugar Maple	9"	S 54°W	19.29 Feet
Steel Sign Post		Southwest	1.90 Feet

2. East Sixteenth Corner Between Sections 23 and 26, T.38N., R.13E.

We established this corner at midpoint and on line between the Northeast Section Corner and North Quarter Corner to Section 26.

Corner references:

Sugar Maple	6"	S 13°E	48.22 Feet
Black Ash	12"	S 66°W	56.32 Feet
Sugar Maple	10"	N 11°W	17.36 Feet
Steel Sign Post		Northeast	1.60 Feet

3. Northeast Sixteenth Corner to Section 26, T.38N., R.13E.

We established this corner at the intersection of the North and East Sixteenth lines to Section 26.

Corner references:

Hemlock	12"	N 78°E	18.41 Feet
Sugar Maple	5"	S 38°W	45.98 Feet
Sugar Maple	10"	N 54°W	33.40 Feet
Steel Sign Post		Northeast	1.50 Feet

Stock No. 26273

Sheet 4 of 4

4. North Sixteenth Corner Between Sections 25 and 26, T.38N., R.13E.  
We established this corner at midpoint and on line between the Northeast Section Corner and East Quarter Corner to Section 26.  
Corner references:

Sugar Maple	8"	N 53°E	28.02 Feet
Sugar Maple	8"	S 78°E	8.57 Feet
Sugar Maple	9"	N 63°W	18.03 Feet
Steel Sign Post		Southeast	3.80 Feet

5. Center West Sixteenth Corner to Section 26, T.38N., R.13E.  
We established this corner at midpoint and on line between the West Quarter Corner and Center Quarter Corner to Section 26.  
Corner references:

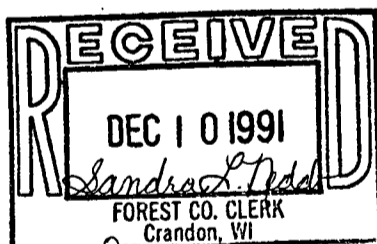
Sugar Maple	8"	S 13°W	37.21 Feet
Sugar Maple	6"	S 66°E	33.08 Feet
Sugar Maple	8"	N 47°W	6.11 Feet
Steel Sign Post		Northwest	.80 Foot

SURVEYOR'S AFFIDAVIT

STATE OF WISCONSIN)  
FOREST COUNTY )SS

I, Milo E. Stefan, Registered Land Surveyor in the State of Wisconsin hereby certify: that I have surveyed and subdivided Section 26, Township 38 North, Range 13 East, Fourth Principal Meridian, Forest County, Wisconsin.

The Plat Map and notes are a correct representation of the corners recovered, restored and established. I have restored and recovered and established these corners in accordance with the rules of survey of the public lands and with the Statutes of the State of Wisconsin.



*Milo E. Stefan*

Milo E. Stefan, RLS No. 1558  
Rhineland, Wisconsin

Date of Survey: 1990



Plat ready for filing: *Sandra L. Deda*  
District Ranger