

Stock No. 26273

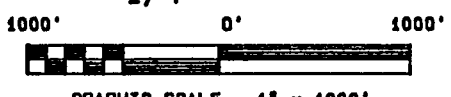
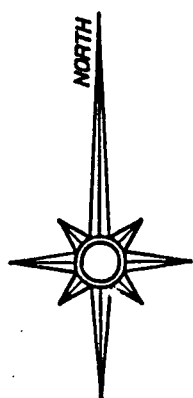
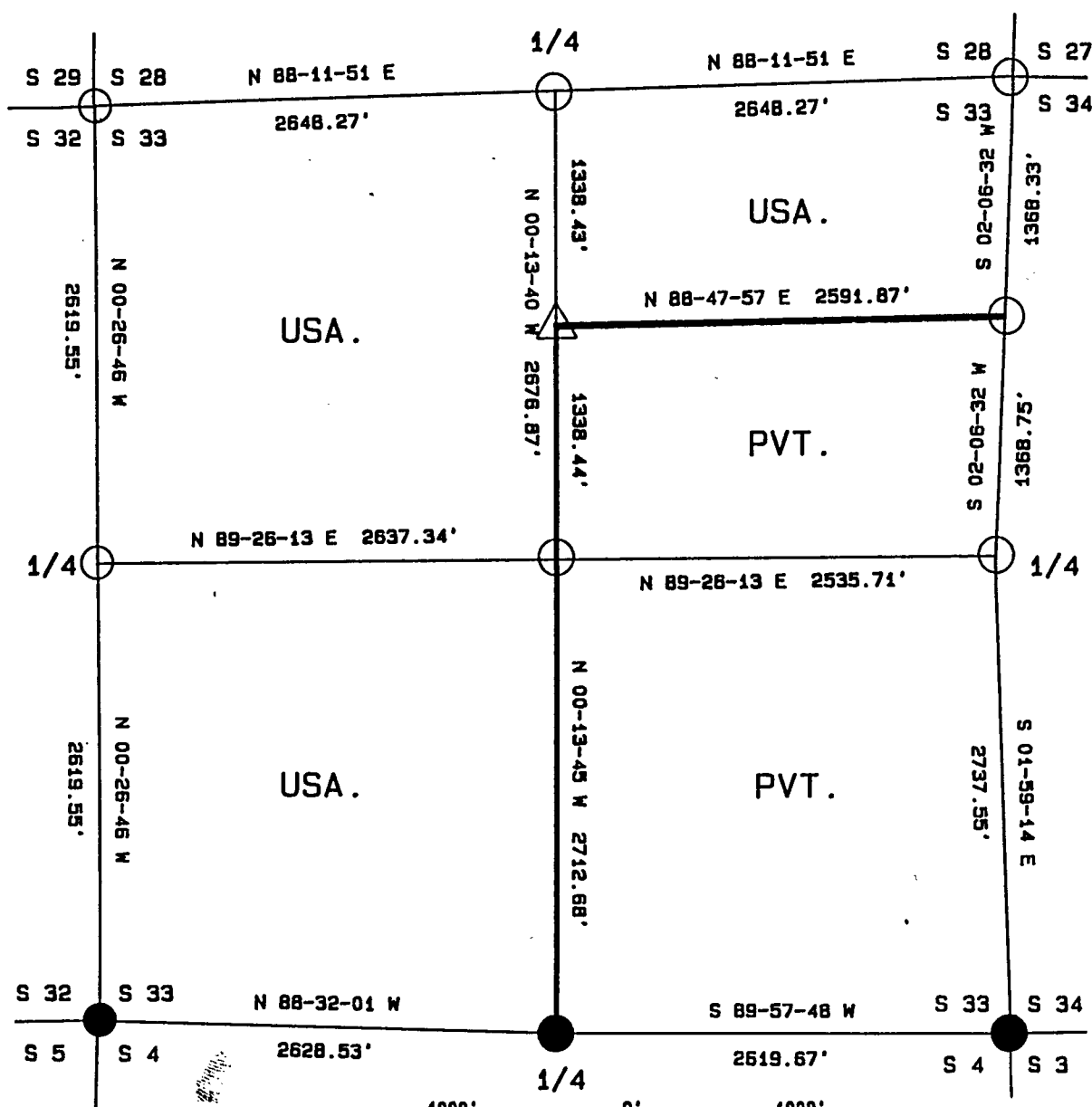
FOREST CO SURVEYOR
FILE # 381333-19920402
DATE _____ BY _____

PLAT OF SURVEY FOR CERTIFIED LAND CORNER
RESTORATION AND ESTABLISHMENT





BEING THE CORNERS FOR THE N 1/2 OF THE NE 1/4,
AND THE CORNERS ON THE PERIMETER OF THE SECTION.

SECTION 33, TOWNSHIP 38 NORTH, RANGE 13 EAST.

COUNTY OF FOREST, STATE OF WISCONSIN.



LEGEND

-  2 1/2 INCH DIAMETER ALUMINUM PIPE MONUMENT 36 INCHES LONG WITH AN ALUMINUM CAP.
-  2 1/2 INCH DIAMETER GALVANIZED PIPE MONUMENT WITH BRASS CAP.
-  1 INCH DIAMETER ALUMINUM PIPE MONUMENT 36 INCHES LONG WITH AN ALUMINUM CAP.
-  BOUNDARY LINE MARKED TO FOREST SERVICE STANDARD

Stock No. 26273

T38N R13E - SECTION 33

Page 2 of 4

SURVEY NOTES

This survey was made by the U.S. Department of Agriculture, Forest Service for the purpose of recovering, restoring, establishing, marking, and perpetuating the corners and boundary line of U.S. Government land on the perimeter and within Section 33, Township 38 North, Range 13 East, Fourth Principal Meridian, Forest County, State of Wisconsin as shown on the plat map herewith.

The Original Government Sub-division of this township was done in 1865 by H. and J.L. Nowlin.

The U.S. Government land within Section 33 was acquired in 1935.

The bearings between corner positions are referenced to the West line of Section 34 as previously surveyed. No curvature corrections have been applied to the bearings in Section 33. The accuracy of this survey exceeds the State of Wisconsin requirement for closure of 1 part in 3000. Corners recovered or established by this survey are marked as described in the map legend. Each monumented corner is referenced to blazed, scribed, painted and tagged bearing trees. Tie bearings to the bearing trees are magnetic and are not corrected for declination.

The field notes and a copy of the plat of survey are on file in the Forest Service Supervisor's Office at Rhinelander, Wisconsin and the District Ranger's Office at Laona, Wisconsin.

CORNERS RECOVERED AND RESTORED1. Northeast Section Corner

Corner position recovered and restored in 1983 by Milo Stefan, RLS with the U.S. Forest Service. Corner documentation is recorded on a Certified Land Corner Restoration Certificate filed in the Forest County Registrar of Deeds Office as Document No. 124238.

1983 Corner References Recovered:

Black Spruce	5"	S 77° E	10.34 feet
Black Spruce	6" (Down)	S 38° W	28.36 feet
Black Spruce	6"	N 81° W	8.03 feet
Steel Sign Post		West	1.50 feet

New Corner References:

Black Spruce	5"	N 10° E	24.85 feet
--------------	----	---------	------------

2. East Quarter Corner

Corner position restored at mid-point and in the center of Highway 55 by Kim Pritzlaff, RLS under contract with the U.S. Forest Service. Corner documentation is recorded on a U.S. Public Land Survey Monument Record filed in the Forest County Registrar of Deeds Office as Document No. 128588.

1984 Corner References Recovered:

Witness Corner	2"x30" Monument	S 85° E	33.00 feet
Elm	12"	N 48° E	84.35 feet
Balsam	6"	S 89 D E	71.75 feet
Steel Sign Post		S 85° E	34.00 feet

3. Southeast Section Corner

Corner position recovered and restored in 1969 by Jean Resvick, RLS with the U.S. Forest Service. Corner documentation is recorded on a Plat of Survey - U.S. Government Land filed in the Forest County Registrar of Deeds Office as Document No. 105099.

Corner position recovered and restored in 1984 by Kim Pritzlaff, RLS under contract with the U.S. Forest Service. Corner documentation is recorded on a U.S. Public Land Survey Monument Record filed in the Forest County Registrar of Deeds Office as Document No. 128586.

1969 and 1984 Corner References Recovered:

Reference Monument		S 44° E	60.00 feet
Black Cherry	9"	S 53° W	98.50 feet
Witness Corner		West	42.50 feet
USGS Bench Mark		N 77° W	66.00 feet
Steel sign post		West	42.80 feet

Stock No. 26273

T38N R13E - SECTION 33

Page 3 of 4

4. South Quarter Corner

Corner position was recovered and restored by Jean Resvick, RLS with the U.S. Forest Service. Corner documentation is recorded on a Plat of Survey - U.S. Government Land filed in the Registrar of Deeds Office as Document No. 105099.

1971 Corner References Recovered:

Aspen	14"	S 4° E	52.94 feet
Aspen	9"	N 85° W	54.29 feet
Steel sign post		Southwest	1.00 feet

5. Southwest Section Corner

Corner position was restored by Jean Resvick, RLS with the U.S. Forest Service. Corner documentation is recorded on a Plat of Survey - U.S. Government Land filed in the Registrar of Deeds Office as Document No. 105099.

1971 Corner References Recovered:

Maple	8"	N 58° E	59.53 feet
Maple	9"	S 35° E	15.95 feet
Maple	9"	S 24° W	10.14 feet
White Ash	15"	N 46° W	51.51 feet
Steel sign post		Northeast	1.00 feet

6. West Quarter Corner

Corner position restored at mid-point and on line between the Southwest and Northwest section corners.

Corner References:

Triple Basswood	12" (SW Branch)	N 37° E	43.74 feet
White Ash	15"	N 9° W	32.35 feet
Steel Sign Post		West	0.50 feet

7. Northwest Section Corner

Corner position restored by double proportionate measurement between the Northwest corner of section 32, the Northwest corner of section 28, the Northeast corner of section 33 and the Southwest corner of section 33.

Corner References:

Twin Maple	12"	N 24° E	27.84 feet
Maple	10"	S 60° E	20.78 feet
Maple	12"	S 44° W	33.25 feet
Maple	10"	N 45° W	25.29 feet
Steel Sign Post		West	0.75 feet

8. North Quarter Corner

Corner position restored at proportionate measurement between the Northwest and the Northeast section corners. Corner position falls in a beaver pond.

Corner References:

Witness Corner	N 82° 50' 21" E	230.62 feet
----------------	-----------------	-------------

Witness Corner References:

Hemlock	18"	N 10° E	73.53 feet
Cedar	22"	N 65° E	94.41 feet
Steel sign post		Northwest	0.50 feet

CORNERS ESTABLISHED1. Center North Sixteenth Corner

Corner position established at midpoint and on line between the Center quarter corner and the North quarter corner.

Corner References:

Spruce	8"	N 19° E	11.13 feet
Spruce	9"	S 75° E	7.12 feet
Steel sign post		West	1.00 feet

Stock No. 26273

T38N R13E - SECTION 33

Page 4 of 4

2. North Sixteenth Corner Between Sections 33 and 34

Corner position established at midpoint and on line between the East quarter corner and the Northeast section corner by Kim Pritzlaff, RLS under contract with the U.S. Forest Service in 1985.

1985 Corner References Recovered:

Elm (Dead)	4"	N 42° E	41.95 feet
Elm	6"	S 74° E	22.50 feet
Basswood	10"	S 21° E	73.80 feet
Steel sign Post		East	7.15 feet

3. Center Quarter Corner

Corner position established at the intersection of straight lines between opposing quarter corners on the perimeter of section 33.

Corner References:

Spruce	6"	S 41° E	39.58 feet
Aspen	6"	S 36° W	4.97 feet
Steel sign post		West	0.75 feet

SURVEYOR'S AFFIDAVIT

State of Wisconsin)

)ss

County of Forest)

I, William B. Cochrane, Land Surveyor, U.S.D.A. Forest Service and a Registered Land Surveyor in the State of Wisconsin, hereby certify that I have surveyed and sub-divided Section 33, Township 38 North Range 13 East, Fourth Principal Meridian, Forest County, State of Wisconsin.

The plat map and survey notes herewith are a correct representation of the land surveyed and sub-divided. I have surveyed and sub-divided said section in accordance with the rules for the Survey of Public Lands and the Statutes of the State of Wisconsin.

William B. Cochrane
Land Surveyor, U.S.D.A. Forest Service
R.L.S. State of Wisconsin
Certificate S-1107



Date of Survey: 1991

Survey requested by: Sue Vap

District Ranger

4/2/92
Date