

County Clerk

FORM NO. 985-A

H.C. Miller Company

Stock No. 26273

FOREST CO SURVEYOR

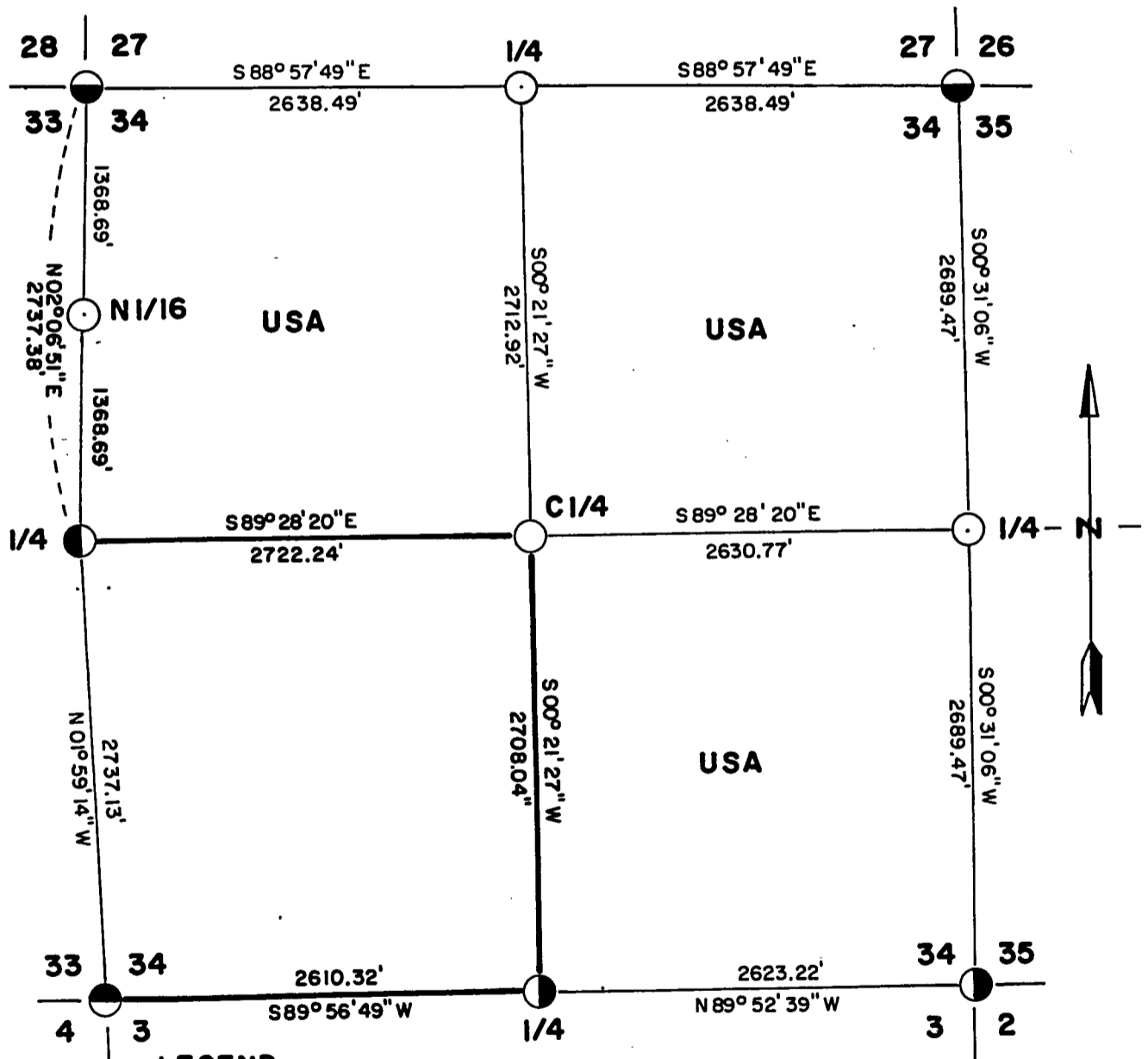
FILE # 38/334-1990424

DATE _____ BY _____

Sheet one of four

PLAT OF SURVEY U.S. GOVERNMENT LAND

Being NW 1/4, NE 1/4, and SE 1/4 all in Section 34
Township 38 North, Range 13 East, Fourth Principal Meridian
FOREST COUNTY, WISCONSIN.



LEGEND

- 2" Diameter Aluminum monument, 30" long
- 2" Diameter Aluminum monument, existing with cap stamped
- 1937 General Land Office monument
- 6" Diameter concrete post with Brass cap stamped for corner
- 1"x 30" iron bar in road way

CONVERSION FACTOR:

Feet to Meters= 0.304801

Meters to Feet= 3.280833

— Marked Boundary Lines of US Government Lands

Stock No. 26273

Sheet two of four

SURVEY NOTES

This survey was made by AARON ASSOCIATES of Oconto Falls, Wisconsin, under contract with the USDA, Forest Service for the purpose of restoring and establishing corners on the perimeter of Section 34, for establishing subdivisional corners within Section 34, and for locating and marking corners and the boundaries of US Government Lands on their perimeter and within Section 34, Township 38 North, Range 13 East, Fourth Principal Meridian, Forest County, Wisconsin.

The US Government Lands in this Section were acquired in the mid 1930s.

The corner positions recovered, restored, and established by this survey are marked by monuments described in the map legend.

The corner positions established were located to an accuracy of one part in 10,000.

The bearings between corner positions are true bearings as determined by solar observation.

The field notes and a copy of the Plat map are on file in the Forest Supervisor's Office at Rhinelander, Wisconsin.

CORNERS RECOVERED AND RESTORED1. Section corner to Sections 27-28-33-34, T38N, R13E.

Located a 2" diameter Aluminum monument set by Milo Stefan, RLS, in 1983. Corner certificate on file.

Corner references:

Black Spruce	5"	S 77 E	10.34'
Black Spruce	6"	S 38 W	28.26'
Black Spruce	5"	N 81 W	8.03'
Black Spruce	4"	N 25 W	6.00'
Steel Sign Post		NW	1.50'

2. Section corner to Sections 26-27-34-35, T38N, R13E.

Located a 2" diameter Aluminum monument with cap stamped for corner set by Milo Stefan, RLS, in 1984. Certificate on file.

Corner references:

Sugar	5"	N 50 E	96.50'
Basswood	6"	S 38 E	28.44'
Red Maple	6"	S 67 W	63.58'
Sugar	14"	N 61 W	133.44'
Steel Sign Post		East	23.90'

3. Section corner to Sections 34-35, T38N, R13E and 2-3, T37N, R13E.

Located a 6" diameter concrete post with Brass cap stamped for corner set by Jean Resvick, RLS, in 1971. Plat map on file.

Corner references:

Cedar (previous)	14"	N 49 W	77.10'
Maple	12"	N 34 E	59.90'
Hemlock (new)	8"	S 10 W	61.05'
Maple	6"	S 57 W	30.17'
Steel Sign Post		S 06 E	2.40'

Stock No. 26273

Sheet three of four

4. Section corner to Sections 33-34, T38N, R13E and 3-4, T37N, R13E.

Located a 1937 General Land Office monument 20" under the surface.
Plat map on file.

Corner references:

Reference Monument	S 44°39' E	60.0'
USGS Bench Mark	N 77°32' W	66.0'
Black Cherry 8"	S 53° W	98.50'
Witness Corner	West	42.50' (with Steel sign post)

5. Quarter corner to Sections 33-34, T38N, R13E.

Highway 55 construction has destroyed all corner evidence in this area. I set this corner using the centerline of Highway 55 and the single proportionate distance between the southwest and northwest corners of Section 34 as the corner position.

Corner references: Set a 1"x 30" iron rod under road surface

Elm	12"	N 48° E	84.35'
Balsam Fir	5"	S 89° E	71.75'
Witness Corner		East	33.00'
Steel Sign Post		East	34.00'

6. Quarter corner to Sections 27-34, T38N, R13E.

This corner fell on the north side of Highway 55 and no original evidence was located. I determined this corner to be lost and set it by single proportionate measurement.

Corner references:

Sugar Maple (3)	7"	N 57° W	23.00'
Sugar Maple	7"	N 19° W	37.00'
Sugar Maple (2)	4"	N 42° E	15.20'
Road centerline		South	50'
Steel Sign Post		North	1.20'

7. Quarter corner to Sections 34-35, T38N, R13E.

No original evidence of this corner could be located. I determined this position to be lost and set it by single proportionate measurement.

Corner references:

Sugar Maple	8"	N 80° W	33.17'
Yellow Birch	7"	S 21° W	20.21'
Hemlock	6"	S 82° E	22.35'
Steel Sign Post		North	1.55'

8. Quarter corner to Sections 34, T38N, R13E and 3, T37N, R13E.

Located a 6" concrete post with Brass cap stamped for corner set in 1971 by Jean Resvick, RLS. Plat map on file.

Corner references:

Corner reset with 2" diameter Aluminum monument set by Milo Stefan, RLS in 1984. Corner certificate on file.

Stock No. 26273

Sheet four of four

CORNERS ESTABLISHED9. Center quarter corner of Section 34, T38N, R13E.

I set this corner at the intersection point of the north-south and east-west quarter lines of Section 34.

Corner references:

Hemlock	13"	S 08 W	9.52'
Hemlock	18"	S 66 W	8.89'
Cedar	10"	N 05 E	27.91'
Steel Sign Post		South	1.00'

10. North sixteenth corner between Sections 33-34, T38N, R13E.

I set this corner at midpoint between the west quarter and northwest corners of Section 34.

Corner references:

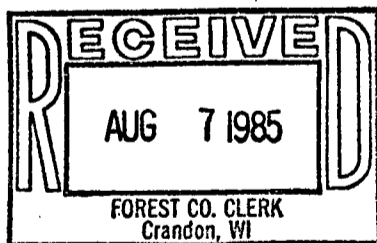
Elm	4"	N 42 E	41.95'
Elm	6"	S 74 E	22.50'
basswood (5)	8"	S 21 E	73.80'
Road centerline		West	14'
Steel Sign Post		East	7.15'

SURVEYOR'S AFFIDAVIT

STATE OF WISCONSIN)
 OCONTO COUNTY)SS

I, Kim H Pritzlaff, Registered Land Surveyor in the State of Wisconsin hereby certify: that I have surveyed and subdivided Section 34, Township 38 North, Range 13 East, Fourth Principal Meridian, Forest County, Wisconsin.

The Plat map and field notes herewith are a true and correct representation of the land surveyed and divided. I have surveyed and subdivided said section in accordance with the rules of survey of the public lands and with the Statutes of the State of Wisconsin.



Dora C. James
 Forest Co. Clerk

Kim H Pritzlaff

Kim H Pritzlaff, RLS No. 1259
 AARON ASSOCIATES
 Oconto Falls, Wisconsin

Date of survey: 1985



Plat ready for filing.

Dale S. Stage
 District Ranger

AFFIDAVIT

I, Kim H Pritzlaff, hereby depose and say: That I am a resident of 5830 Donegal Lane, Oconto Falls, Wisconsin;

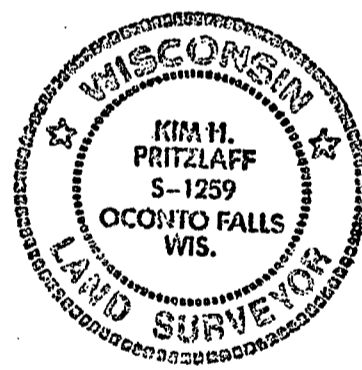
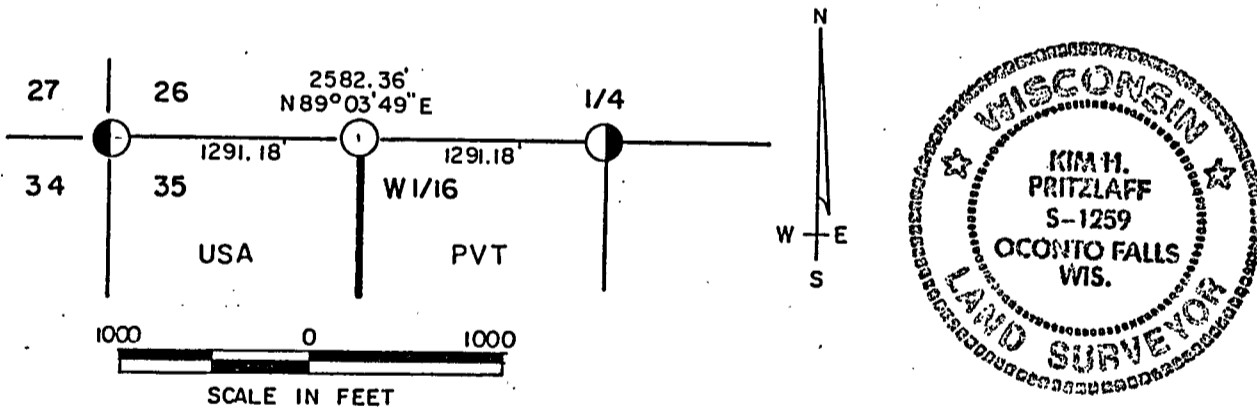
That I am a Registered Wisconsin Land Surveyor with certificate Number S 1259 and operate a land surveying business known as AARON ASSOCIATES in Oconto Falls, Wisconsin;

That in 1985 I had a contract with the United States Department of Agriculture, Forest Service, to perform a cadastral survey of government lands in Section 35, Township 38 North, Range 13 East, Fourth Principal Meridian, Forest County, Wisconsin;

That as a result of said cadastral survey, I made a Plat of Survey filed August 7, 1985 in the Forest County Courthouse which plat shows the results of the aforementioned survey;

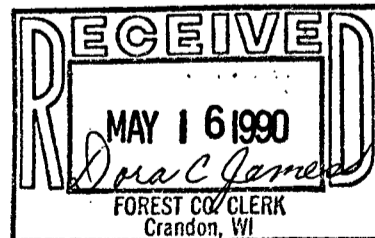
That on said Plat on sheet one of six, I have noted the distance from the corner to sections 26-27-34-35 to the West sixteenth corner and from the West sixteenth corner to the quarter corner to sections 26-35 as being 1391.18 ft. when in fact it should be noted as 1291.18 ft in both instances. This would correspond to the total dimension along the north line of said section 35 which is correctly noted as 2582.36 ft.

That I make this correction for the sole purpose of correcting the distance shown on said plat and for no other purpose. This half mile line should be noted as follows:



WITNESS the hand and seal of Kim H Pritzlaff this 24 day of April, 1990.

Kim H. Pritzlaff
 Kim H Pritzlaff, RLS No. 1259



STATE OF WISCONSIN)
 OCONTO COUNTY)SS

Personally came before me this 24 day of April, 1990, the above named Kim H Pritzlaff known to me to be the person who executed the foregoing instrument and acknowledged the same.

Ellen Pritzlaff Notary Public, Oconto County, Wisconsin.

My Commission expires 12/8/91