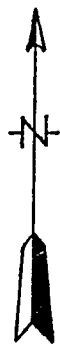
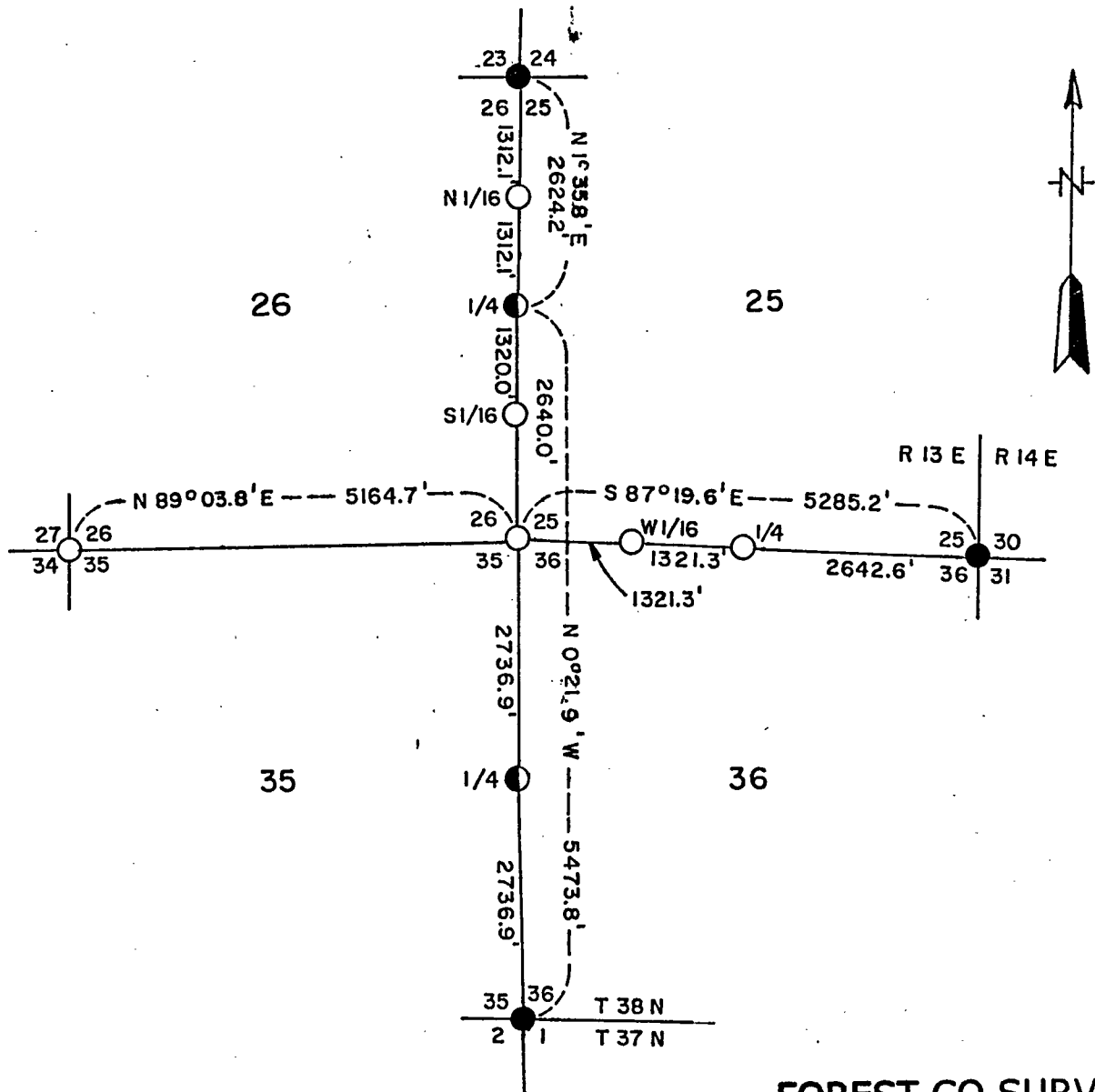
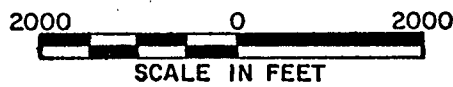


CERTIFIED LAND CORNER RESTORATION & ESTABLISHMENT

Being Corners on the South and West Side of Section 25
and 1/4 Corner to Sections 35 and 36
Township 38 North, Range 13 East, Fourth Principal Meridian
FOREST COUNTY, WISCONSIN



LEGEND

- 2" Galvanized Iron Pipe with Brass Cap
- ⊙ 2" Aluminum Monument, - 60" Long
- 2" Aluminum Monument, - 30" Long

FOREST CO SURVEYOR
FILE # 381335-19840000
DATE _____ BY _____

Stock No. 26273

Sheet 2 of 4

SURVEY NOTES

This survey was made by the U. S. Department of Agriculture, Forest Service, for the purpose of recovering, restoring, and establishing corners on the west and south sides of Section 25 and the quarter corner to Sections 35 and 36, Township 38 North, Range 13 East, Fourth Principal Meridian, Forest County, State of Wisconsin.

The original Government survey of the township was made in 1865 by James L. Nowlin. Subsequent survey evidence was located in the field, but no record of it is known.

Lands in this survey area were acquired between 1934 and 1938.

The corner positions are marked by the monument described in the map legend.

This survey was conducted by an Electronic Distance Meter (HR3800A) and Wild T-2 Theodolite.

The bearings between corner positions are true bearings as determined by solar observations.

The field notes of this survey and a copy of this restoration are on file in the Forest Supervisor's Office at Rhinelander, Wisconsin.

CORNERS RECOVERED AND RESTORED1. Section Corner to Sections 23, 24, 25, and 26, T.38N., R.13E.

Replaced found 3" x 3" post with a 2" iron pipe, 5' long, filled with concrete with a brass cap stamped to identify corner.

Corner References:

Hemlock	18"	N.24°E.	25.24 feet
White Spruce	10"	S.3°E.	20.59 feet
Hemlock	13"	S.44°W.	41.09 feet
Cedar	14"	N.35°W.	25.79 feet

2. Quarter Corner to Sections 25 and 26, T.38N., R.13E.

Corner position was restored from natural feature calls north and south by Milo Stefan in 1984. Position was monumented by a 2" x 60" aluminum monument with cap stamped to identify corner.

Corner References:

Tamarack	6"	N.75°E.	13.69 feet
Tamarack	6"	S.65°E.	13.98 feet
Tamarack	11"	S.23°W.	76.42 feet
Steel Sign Post		Northwest	1.15 feet

3. Section Corner to Sections 25, 26, 35, and 36, T.38N., R.13E.

Corner position restored from natural feature calls north, west, and south by Milo Stefan, R.L.S., in 1984. Position was monumented by a 2" x 30" aluminum monument with cap stamped to identify corner.

Certificate on file.

Corner References:

White Ash	10"	N.38°E.	60.69 feet
Sugar Maple	10"	S.10°E.	14.12 feet
Sugar Maple	9"	N.80°W.	27.29 feet
Sugar Maple	5"	N.12°W.	33.23 feet
Steel Sign Post	7'	Northeast	1.10 feet

Stock No. 26273

Sheet 3 of 4

4. Quarter Corner to Sections 35 and 36, T.38N., R.13E.
Corner position restored by lost methods, single proportionate measure by Milo Stefan, R.L.S., in 1984. Certificate on file.
Corner References:

Tamarack	5"	N.53°E.	21.33 feet
Tamarack	8"	S.52°W.	11.38 feet
Black Spruce	5"	N.51°W.	44.03 feet
Steel Sign Post	7'	East	1.00 feet

5. Section Corner to Sections 1, 2, 35, and 36, T.37-38N., R.13E.
Corner position was restored by proportionate record measurement between the quarter corner to Sections 3 and 34 and the quarter corner to Sections 1 and 36, Townships 37-38 North, Range 13 East. Position monumented by a 2" x 60" iron pipe with brass cap stamped to identify corner location.
Corner References:

Maple	6"	N.76°W.	38.42 feet
Maple	20"	S.32°W.	38.25 feet
Hemlock	20"	S.68°W.	93.62 feet
Maple	18"	N.24°E.	27.44 feet

6. Section Corner to Sections 26, 27, 34, and 35, T.38N., R.13E.
Corner position was restored from road construction notes of 1922. Position monumented by a 2" x 36" aluminum monument 6" below old road surface with cap stamped to identify corner location.
Corner References:

Sugar Maple	5"	N.50°E.	96.50 feet
Basswood	6"	S.38°E.	28.44 feet
Red Maple	6"	S.67°W.	63.58 feet
Sugar Maple	14"	N.61°W.	133.44 feet
Steel Sign Post		East	23.90 feet

7. Quarter Corner to Sections 35 and 36, T.38N., R.13E.
Corner position was restored by lost methods. Position is monumented by a 2" x 30" aluminum monument with cap stamped to identify the corner location.
Corner References:

Hemlock	14"	N.54°E.	85.64 feet
Sugar Maple	5"	S.20°W.	10.50 feet
Sugar Maple	6"	N.70°W.	12.62 feet
Steel Sign Post		Southeast	1.30 feet

8. Section Corner to Sections 25, 30, 31, and 36, T.38N., R.13-14E.
Corner position is a found perpetuated position. Position was remonumented with a 2" x 60" iron pipe with a brass cap stamped to identify the corner location.
Corner References:

White Birch	5"	N.59°E.	30.78 feet
Cedar	5"	S.18°E.	19.59 feet
Tamarack	7"	S.69°W.	31.33 feet
Cedar	8"	N.11°W.	41.00 feet

Stock No. 26273

Sheet 4 of 4

CORNERS ESTABLISHED

1. West One-Sixteenth to Sections 25 and 36, T.38N., R.13E.
 Corner established midpoint and on line between the southwest section corner and the south quarter corner of Section 25.
 Corner References:

White Ash	9"	N.52°E.	26.82 feet
Sugar Maple	6"	S.60°W.	23.03 feet
Sugar Maple	7"	N.65°W.	29.08 feet
Steel Sign Post		North	1.80 feet

2. South One-Sixteenth to Sections 25 and 26, T.38N., R.13E.
 Corner established midpoint and on line between southwest section corner and the west quarter corner of Section 25.
 Corner References:

Hemlock	14"	North	112.98 feet
Sugar Maple	8"	S.44°E.	19.93 feet
Sugar Maple	6"	N.58°W.	35.04 feet
Steel Sign Post		East	2.70 feet

3. North One-Sixteenth to Sections 25 and 26, T.38N., R.13E.
 Corner established midpoint and on line between the northwest section corner and the west quarter corner of Section 25.
 Corner References:

Sugar Maple	6"	N.41°E.	26.79 feet
Sugar Maple	6"	S.31°E.	35.89 feet
Sugar Maple	7"	N.75°W.	21.91 feet
Steel Sign Post		East	1.60 feet

SURVEYOR'S AFFIDAVIT

State of Wisconsin]
 County of Forest] SS

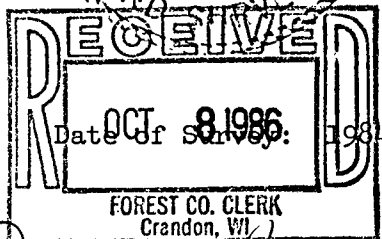
I, Milo E. Stefan, Cadastral Surveyor, U. S. Forest Service and a registered surveyor in the State of Wisconsin, hereby certify that I have surveyed and subdivided Sections 25 and 36, Township 38 North, Range 13 East, Fourth Principal Meridian, State of Wisconsin.

The plat map and the notes herewith are a correct representation of the land surveyed and divided. I have surveyed and subdivided said section in accordance with the rules for survey of the public lands and with the statutes of the State of Wisconsin.



Milo E. Stefan

Cadastral Surveyor, U. S. Forest Service
 R.L.S., State of Wisconsin
 Certificate S-1558



Plat Ready For Filing:

Dale B. Haeg
 District Ranger

Dora C. James