

County Clerk

FORM NO. 985-A

H.C. Miller Company

Stock No. 26273

FOREST CO SURVEYOR

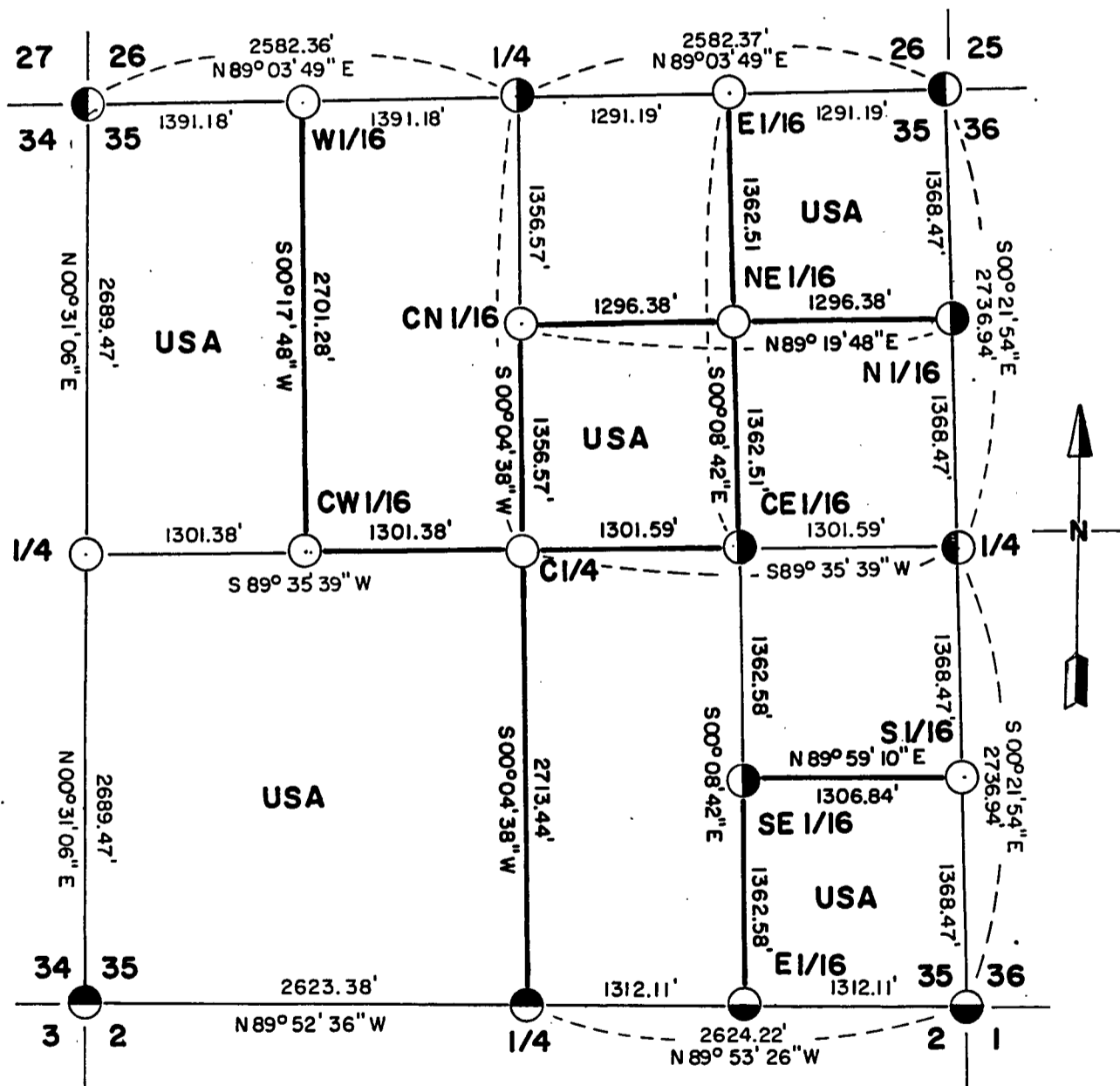
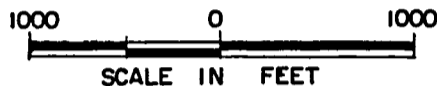
FILE # 381335-19850807

DATE \_\_\_\_\_ BY \_\_\_\_\_

Sheet one of six

# PLAT OF SURVEY U.S. GOVERNMENT LAND

Being W 1/2-NW 1/4, NE 1/4-NE 1/4, SW 1/4-NE 1/4,  
SE 1/4-SE 1/4, and SW 1/4 all in Section 35  
Township 38 North, Range 13 East, Fourth Principal Meridian  
FOREST COUNTY, WISCONSIN.



### LEGEND

- 6" Diameter concrete post with brass cap
- 2" Diameter iron pipe with Brass cap
- 2" Diameter Aluminum post, 30" long
- 2" Diameter Aluminum post, 60" long
- 2" Diameter Aluminum post found with cap stamped for corner

CONVERSION FACTOR:  
Feet to Meters = 0.304801  
Meters to Feet = 3.280833

— Marked Boundary Lines of US Government lands

Stock No. 26273

Sheet two of six

SURVEY NOTES

This survey was made by AARON ASSOCIATES of Oconto Falls, Wisconsin under contract with the USDA Forest Service, for the purpose of restoring and establishing corners on the perimeter of Section 35, for establishing subdivisional corners within Section 35, and for locating and marking the boundaries of US Government lands on their perimeter and within Section 35, Township 38 North, Range 13 East, Fourth Principal Meridian, Forest County, Wisconsin.

The US Government lands were acquired in this section in the mid 1930s.

The corner positions restored, recovered and established by this survey are marked by monuments described in the map legend.

The corner positions established were located to an accuracy of one part in 10,000.

The bearings between corner positions are true bearings as determined by solar observation.

The field notes of this survey and a copy of the plat are on file in the Forest Supervisor's Office at Rhinelander, Wisconsin.

CORNERS RECOVERED AND RESTORED1. Section corner to Sections 27-26-34-35, T38N, R13E.

Located a 2" diameter Aluminum monument with cap stamped for corner set by Milo Stefan, RLS in 1984. Certificate on file.

Corner references:

Sugar	5"	N 50 E	96.50'
Basswood	6"	S 38 E	28.44'
Red Maple	6"	S 67 W	63.58'
Sugar	14"	N 61 W	133.44'
Steel Sign Post		East	23.90'

2. Section corner to Sections 25-26-35-36, T38N, R15E.

Located a 2" diameter Aluminum monument with cap stamped for corner set by Milo Stefan, RLS in 1984. Certificate on file.

Corner references:

White Ash	10"	N 38 E	60.69'
Sugar Maple	10"	S 10 E	14.12'
Sugar Maple	9"	N 80 W	27.29'
Sugar Maple	5"	N 12 W	33.23'
Steel Sign Post		NE	1.1'

Stock No. 26273

Sheet three of six

3. Section corner to Sections 35-36, T38N, R13E and 1-2, T37N, R13E.

Located a 2" diameter iron pipe with brass cap stamped for corner set by Jean Resvick, RLS, in 1971. Plat map and certificate on file.  
Corner refernces:

Maple(previous)	18"	N 25 E	27.40'
Maple(new)	6"	N 76 W	38.42'
Maple "	20"	S 32 W	38.25'
Hemlock "	20"	S 68 W	93.62'
Iron post		NW	1.0'

4. Section corner to Sections 34-35, T38N, R13E and 2-3, T37N, R13E.

Located a 6" diameter concrete post with brass cap stamped for corner set by Jean Resvick, RLS in 1971. Plat map and certificate on file.  
Corner refernces:

Cedar(previous)	14"	N 49 W	77.10'
Maple "	12"	N 34 E	59.90'
Hemlock ( new)	8"	S 10 W	61.05'
Maple "	6"	S 57 W	30.17'
Steel Sign Post		S 06 E	2.40'

5. Quarter corner to Sections 34-35, T38N, R13E.

Set this corner by single proportionate measurement after searching for bearing tree evidence and determining the position to be lost.  
Corner refernces:

Sugar Maple	8"	N 80 W	33.17'
Yellow Birch	7"	S 21 W	20.21'
Hemlock	6"	S 82 E	22.35'
Steel Sign Post		North	1.55'

6. Quarter corner to Sections 26-35, T38N, R13E.

Located blazed lines running east-west 40 and 100 feet north but no corner evidence. I determined this corner to be lost and set it by single proportionate measurement.  
Corner refernces:

Cedar	6"	N 08 E	14.64'
Hemlock	12"	S 57 E	23.50'
Yellow Birch	7"	S 04 W	45.74'
Cedar	9"	N 77 W	13.28'
Steel Sign Post		S 08 E	1.50'

7. Quarter corner to Sections 35-36, T38N, R13E.

Located a 2" diameter Aluminum monument with cap stamped for corner set by Milo Stefan, RLS; in 1984. Certificate on file.  
Corner refernces:

Tamarack	5"	N 53 E	21.22'
Tamarack	8"	S 52 W	11.38'
Black Spruce	5"	N 51 W	44.10'
Steel Sign Post		East	1.0'

Stock No. 26273

Sheet four of six

8. Quarter corner to Sections 35, T38N, R13E and 2, T37N, R13E.

Located a 6" diameter concrete post with brass cap stamped for corner set by Jean Resvick, RLS, in 1971. Plat map and certificate on file.  
Corner references:

Hemlock	17"	S 25 E	38.2'
White Spruce	19"	S 22 W	41.1'
Sugar Maple	13"	N 14 W	32.0'
Road centerline		South	3'
Set Steel Sign Post North, next to 4"x4" post with metal tag			

CORNERS ESTABLISHED9. Center quarter corner of Section 35, T38N, R13E.

Set this corner position at the intersection point of the north-south and east-west quarter lines of said Section 35.  
Corner references:

Red Maple	7"	S 47 E	9.52'
Yellow Birch	20"	S 84 W	49.82'
Hemlock	10"	N 62 W	69.70'
Steel Sign Post		East	1.00'

10. West sixteenth corner between Sections 26-35, T38N, R13E.

Set this corner at midpoint between the northwest and north quarter corners of Section 35.  
Corner references:

Hemlock	10"	S 28 E	57.40'
Hemlock	15"	S 84 E	24.50'
Hemlock	13"	S 85 W	53.00'
Steel Sign Post		South	1.55'

11. East sixteenth corner between Section 26-35, T38N, R13E.

I set this corner at midpoint between the northeast and north quarter corners of Section 35.  
Corner references:

Sugar Maple	6"	N10 W	17.40'
Sugar Maple	9"	S 08 W	27.07'
Hemlock	15"	S 68 E	53.48'
Steel Sign Post		South	1.32'

12. Center north sixteenth corner of Section 35, T38N, R13E.

I set this corner at midpoint between the center quarter and north quarter corners of said Section 35.  
Corner references:

Sugar Maple	10"	S 88 E	15.25'
Hemlock	18"	N 12 E	57.15'
Yellow Birch	20"	S 68 W	8.58'
Steel Sign Post		South	2.40'

Stock No. 26273

Sheet five of six

13. Northeast sixteenth corner of Section 35, T38N, R13E.

I set this corner at the intersection of the north-south and east west sixteenth lines in the northeast quarter of said Section 35.

Corner references:

Sugar Maple	10"	N 02 W	26.30'
Sugar Maple	8"	N 68 E	3.50'
Hemlock	18"	S 19 W	13.85'
Steel Sign Post		North	1.70'

14. North sixteenth corner between Sections 35-36, T38N, R13E.

I set this corner at midpoint between the west quarter and northeast corners of said Section 35.

Corner references:

Hemlock	8"	S 40 E	21.56'
Yellow Birch	13"	S 77 W	34.10'
Hemlock	12"	N 16 W	25.10'
Steel Sign Post		West	1.80'

15. Center west sixteenth corner of Section 35, T38N, R13E.

I set this corner at midpoint between the center quarter and west quarter corners of said Section 35.

Corner references:

Sugar Maple	5"	N 14 W	37.40'
Sugar Maple	8"	S 45 E	7.94'
Hemlock	10"	N 75 W	38.45'
Steel Sign Post		North	1.55'

16. Center east sixteenth corner of Section 35, T38N, R13E..

I set this corner at midpoint between the center quarter and east quarter corners of said Section 35.

Corner references:

Cedar	8"	S 13 E	16.20'
Cedar	10"	S 86 W	22.49'
Cedar	10"	N 39 W	26.22'
Steel Sign Post		West	2.10'

17. Southeast sixteenth corner of Section 35, T38N, R13E.

I set this corner at the intersection point of the north-south and east-west sixteenth lines in the southeast quarter of said Section 35.

Corner references:

Cedar	11"	S 27 E	21.90'
Cedar	12"	S 44 W	21.00'
Cedar	10"	N 23 W	10.75'
Steel Sign Post		East	1.40'

Stock No. 26273

Sheet six of six

18. South sixteenth corner between Sections 35-36, T38N, R13E.

I set this corner at midpoint between the east quarter and southeast corners of said Section 35.

Corner references:

Yellow Birch	11"	S 52 E	9.70'
Sugar Maple	5"	S 04 W	29.35'
Yellow Birch	11"	S 54 W	24.80'
Steel Sign Post		West	1.70'

19. East sixteenth corner between Sections 35, T38N, R13E and 2, T37N, R13E.

Located a 2" diameter iron pipe with brass cap stamped for corner set by Jean Resvick, RLS, in 1971. Plat map and certificate on file.

Corner references:

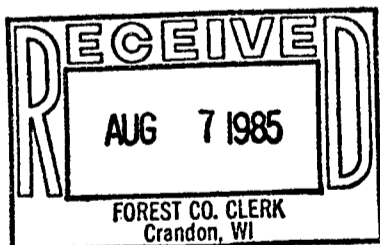
Maple	9"	N 46 E	24.0'
Maple	5"	S 05 E	21.5'
Steel Sign Post		SE	1.0'
Center Road		North	43.0'
Center Road		West	38.0'

SURVEYOR'S AFFIDAVIT

STATE OF WISCONSIN)  
 OCONTO COUNTY )SS

I, Kim H Pritzlaff, Registered Land Surveyor in the State of Wisconsin hereby certify: that I have surveyed and subdivided Section 35, Township 38 North, Range 13 East, Fourth Principal Meridian, Forest County, Wisconsin.

The Plat map and notes are a correct representation of the corners recovered, restored, and established. I have restored and recovered and established these corners in accordance with the rules of survey of the public lands and with the Statutes of the State of Wisconsin.



*Dora C. James*  
*Forest Co. Clerk*

*Kim H Pritzlaff*

Kim H Pritzlaff, RLS No. 1259  
 AARON ASSOCIATES  
 Oconto Falls, Wisconsin

Date of survey: 1985



Plat ready for filing: *Dale B. Staeger*

District Ranger