

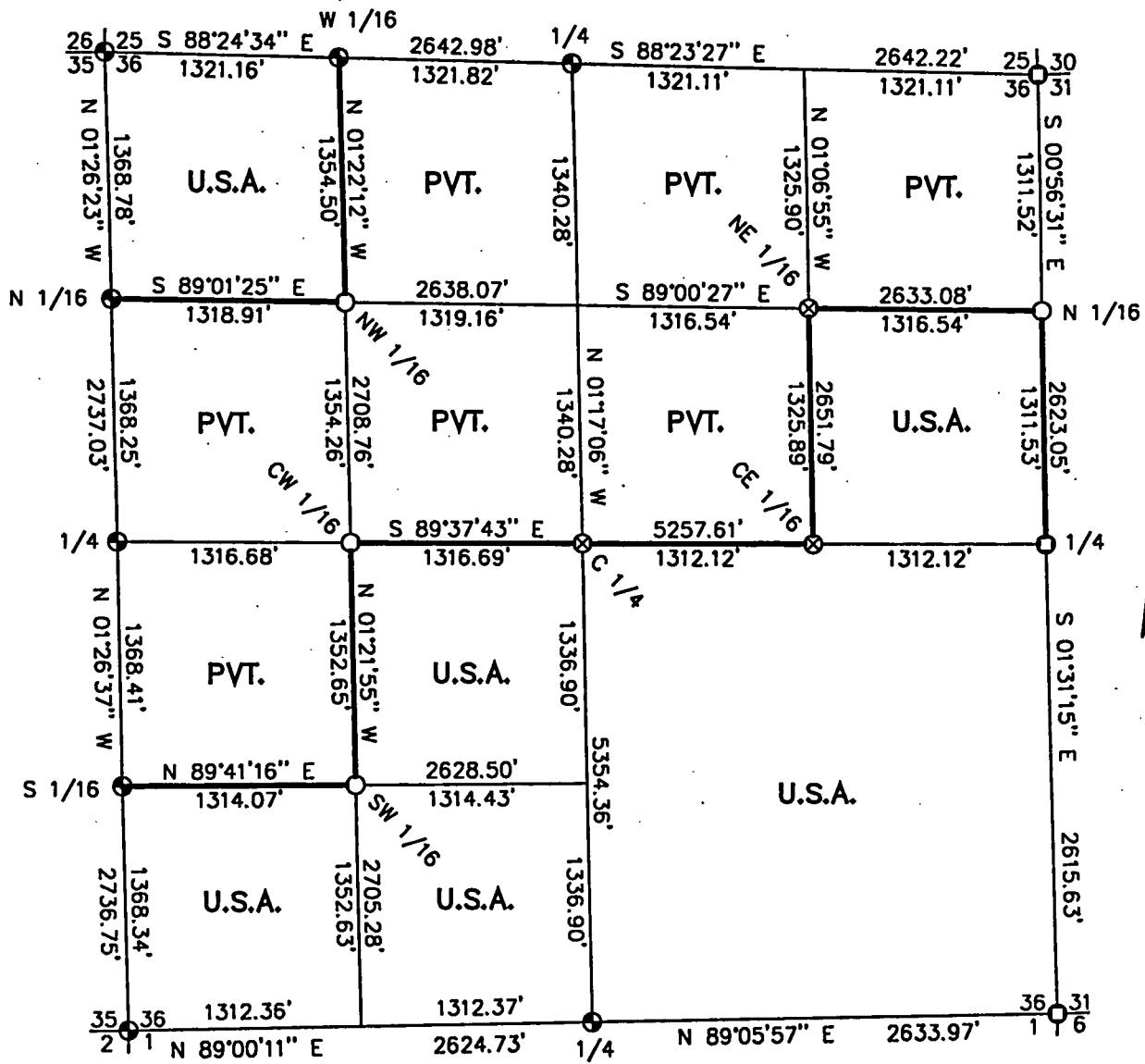
FOREST CO SURVEYOR  
 FILE # 381336-19990318  
 DATE \_\_\_\_\_ BY \_\_\_\_\_

SHEET ONE OF FIVE

# PLAT OF SURVEY

## U.S. GOVERNMENT LANDS

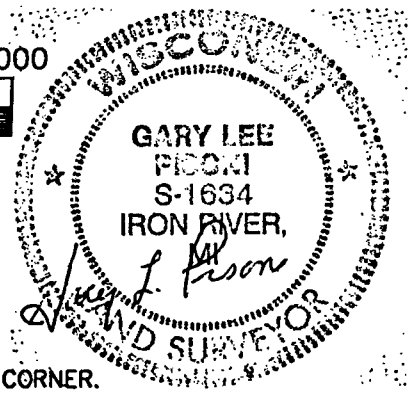
Being the SE 1/4; the NW 1/4 of the NW 1/4; the SE 1/4 of the NE 1/4;  
 the E 1/2 and the SW 1/4 of the SW 1/4; Section 36, Township 38 North, Range 13 East,  
 Fourth Principal Meridian, Forest County, Wisconsin



Scale 1" = 1000'

LEGEND

- EXISTING 2" DIAMETER IRON PIPE WITH BRASS CAP STAMPED FOR CORNER.
- ⊕ EXISTING 2 1/2" DIAMETER ALUMINUM MONUMENT WITH CAP STAMPED FOR CORNER.
- 1"X36" ALUMINUM MONUMENT WITH CAP STAMPED FOR CORNER, SET THIS SURVEY.
- ⊗ 1"X60" ALUMINUM MONUMENT WITH CAP STAMPED FOR CORNER, SET THIS SURVEY.
- MARKED BOUNDARY LINES OF U.S. GOVERNMENT LANDS.



**SURVEY NOTES**

This survey was made by Gary L. Pisoni of Iron River, Michigan under contract with the U.S. Department of Agriculture, Forest Service for the purpose of establishing subdivisional corners within and along the perimeter of Section 36, and for locating and marking the boundaries of the U.S. Government lands on their perimeter and within Section 36, Township 38 North, Range 13 East, 4th Principal Meridian, Forest County, WI.

This survey is based on U.S.D.A., U.S. Forest Service GPS survey control completed in 1998 and the resulting sectional subdivision therefrom.

The U.S. Government lands in Section 36 were acquired in 1935.

The original township line survey was completed by Alfred Millard in 1858.  
The original township subdivision was completed by James L. Nowlin in 1865.

The corner positions recovered, restored, and established by this survey are marked by the monuments described in the plat legend:

The corner positions established were located to an accuracy of one part in 3000.

The field notes and a copy of this plat are on file in the Forest Supervisor's office at Rhinelander, WI.

Wisconsin North Zone Coordinates were computed by the U.S.D.A. from GPS observations and are based on 1983 North American datum.

The bearings between corner positions are grid bearings based on the Wisconsin North Zone State Plane Coordinate System.

Conversions between grid bearings and true bearings are performed by the use of the following algebraic formula: True bearings - Convergence angle = Grid bearing. (Close attention to the algebraic sign must be observed, ie: +/- of the convergence angle).

Ground distances are shown on the Plat map. Conversion between Ground distance and Grid distance is performed by the following formula:

$$\text{Grid distance} / (\text{Grid Scale Factor} \times (20,906,000 / (20,906,000 + \text{Mean Elev.}))) = \text{Ground Distance}$$

**COORDINATE VALUES ON 1983 N.A.D.**

Corner Code	North Latitude	West Longitude	State Plane Coordinates		Convergence Angle	Scale Factor
			North	East		
E 1/4	45-43'-48.95"	88-48'-01.22"	207825.638	2274845.395	00-51'-55.44"	0.999974327
W 1/4	45-43'-50.06"	88-49'-15.31"	207859.725	2269588.432	00-51'-01.99"	0.999974286
NE	45-44'-14.84"	88-48'-01.27"	210448.062	2274802.274	00-51'-55.41"	0.999973383
N 1/4	45-44'-15.97"	88-48'-38.49"	210522.248	2272161.369	00-51'-28.56"	0.999973342
S 1/4	45-43'-23.11"	88-48'-37.92"	205169.793	2272281.433	00-51'-28.97"	0.999975284
SW	45-43'-23.05"	88-49'-14.92"	205124.123	2269657.367	00-51'-02.28"	0.999975287
SE	45-43'-23.13"	88-48'-00.80"	205211.204	2274914.803	00-51'-55.75"	0.999975283
N 1/16	45-44'-03.57"	88-49'-15.51"	209227.397	2269554.001	00-51'-01.85"	0.999973792
NW	45-44'-17.08"	88-49'-15.71"	210595.607	2269519.677	00-51'-01.71"	0.999973302

**COORDINATE VALUES ON 1983 N.A.D.**

Corner Code	North	West	State Plane Coordinates		Convergence	Scale Factor
	Latitude	Longitude	North	East	Angle	
W 1/16	45-44'-16.52"	88-48'-57.10"	210558.899	2270840.193	00-51'-15.13"	0.999973322
C 1/4	45-43'-49.51"	88-48'-38.20"	207842.652	2272221.477	00-51'-28.76"	0.999974306
N 1/16 (36/31)	45-44'-01.90"	88-48'-01.25"	209136.850	2274823.834	00-51'-55.42"	0.999973853
CW 1/16	45-43'-49.79"	88-48'-56.76"	207851.188	2270904.954	00-51'-15.38"	0.999974296
NE 1/16	45-44'-02.32"	88-48'-19.80"	209159.650	2273507.628	00-51'-42.04"	0.999973838
NW 1/16	45-44'-03.15"	88-48'-56.93"	209204.926	2270872.577	00-51'-15.25"	0.999973807
SW 1/16	45-43'-36.43"	88-48'-56.59"	206499.060	2270937.178	00-51'-15.50"	0.999974789
S 1/16	45-43'-36.56"	88-49'-15.11"	206491.900	2269623.260	00-51'-02.14"	0.999974784
CE 1/16	45-43'-49.23"	88-48'-19.71"	207834.150	2273533.44	00-51'-42.10"	0.999974316

**CORNERS RECOVERED OR RESTORED**

- 1) Section corner common to Sections 25, 26, 35, 36, T38N, R13E.  
Corner found monumented by Alan Harrison, RLS. Certificate on file in Forest County.
- 2) Quarter corner common to Sections 25 and 36, T38N, R13E.  
Corner found monumented by Phillip Hansen, RLS. Certificate on file in Forest County.
- 3) Quarter corner common to Sections 35 and 36, T38N, R13E.  
Corner found monumented by Alan Harrison, RLS. Certificate on file in Forest County.
- 4) Quarter corner common to Section 36, T38N, R13E and 31, T38N, R14E  
Corner found monumented by Jean Resvick, RLS. Certificate on file in Forest County.
- 5) Section corner common to Sections 1, 2, T37N, R13E and 35, 36, T38N, R13E.  
Corner found monumented by Phillip Hansen, RLS. Certificate on file in Forest County.
- 6) Quarter corner common to Sections 1, T37N, R13E and 36, T38N, R13E.  
Corner found monumented by Phillip Hansen, RLS. Certificate on file in Forest County.
- 7) Southeast corner Section 36, T38N, R13E  
Corner found monumented by Jean Resvick, RLS. Certificate on file in Forest County.
- 8) Northeast corner Section 36, T38N, R13E  
Corner found monumented by Milo Stefan, RLS. Certificate on file in Forest County.
- 9) North One-sixteenth corner common to Sections 35 and 36, T38N, R13E.  
Corner found monumented by Kim Pritzlaff, RLS.
- 10) South One-sixteenth corner common to Sections 35 and 36, T38N, R13E.  
Corner found monumented by Kim Pritzlaff, RLS.
- 11) West One-sixteenth corner common to Sections 25 and 36, T38N, R13E.  
Corner found monumented by Milo Stefan, RLS.

**CORNERS ESTABLISHED**

1) North One-Sixteenth Corner to Sections 31 and 36.

Corner position established midpoint and on line between the Northeast corner and the East quarter corner of Section 36.

Corner References:

Sugar Maple	10"	N 66°W	15.56 feet
Sugar Maple	7"	N 64°E	29.22 feet
Sugar Maple	8"	S 32°W	37.20 feet
Steel Sign Post		West	0.85 feet

2) Northeast One-Sixteenth Corner to Section 36.

Corner established at the intersection of straight lines between opposing one-sixteenth corner positions on the perimeter of the Northeast quarter of Section 36.

Corner References:

Cedar	8"	N 37°E	22.15 feet
Cedar	6"	S 07°W	39.96 feet
Cedar	6"	N 76°W	20.85 feet
Steel Sign Post		South	0.85 feet

3) Center East One-Sixteenth Corner to Section 36.

Corner position established midpoint and on line between the center quarter corner and the East quarter corner of Section 36.

Corner References:

Tamarack	5"	N 41°E	30.02 feet
Tamarack	8"	S 68°E	35.28 feet
Tamarack	8"	S 23°W	28.52 feet
Steel Sign Post		West	0.75 feet

4) Center One-Quarter Corner to Section 36.

Corner established at the intersection of straight lines between opposing one-quarter corner positions on the perimeter of Section 36.

Corner References:

Cedar	8"	N 31°W	7.07 feet
Spruce	8"	S 48°E	26.51 feet
Cedar	12"	S 60°W	48.70 feet
Steel Sign Post		East	0.50 feet

5) Center West One-Sixteenth Corner to Section 36.

Corner position established midpoint and on line between the center quarter corner and the West quarter corner of Section 36.

Corner References:

Red Maple	6"	N 70°E	22.82 feet
Red Maple	6"	S 19°E	30.03 feet
Spruce	8"	N 78°W	29.52 feet
Steel Sign Post		South	0.70 feet

**CORNERS ESTABLISHED**

6) Southwest One-Sixteenth Corner to Section 36.

Corner established at the intersection of straight lines between opposing one-sixteenth corner positions on the perimeter of the Southwest quarter of Section 36.

Corner References:

Sugar Maple	12"	N 61°W	18.94 feet
Sugar Maple	14"	S 11°E	26.12 feet
Sugar Maple	6"	S 51°W	31.98 feet
Steel Sign Post		West	1.50 feet

7) Northwest One-Sixteenth Corner to Section 36.

Corner established at the intersection of straight lines between opposing one-sixteenth corner positions on the perimeter of the Northwest quarter of Section 36.

Corner References:

Tamarack	9"	S 83°E	11.32 feet
Tamarack	7"	S 18°W	11.28 feet
Tamarack	7"	S 61°W	20.43 feet
Steel Sign Post		North	0.75 feet

**SURVEYOR'S AFFIDAVIT**

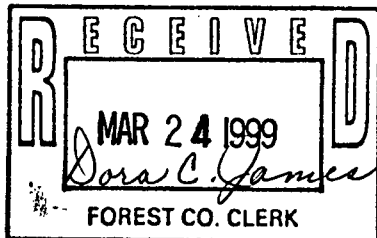
State of Wisconsin ]  
 County of Forest ] SS

I, Gary L. Pisoni, a Registered Land Surveyor in the State of Wisconsin, do hereby certify that I have surveyed and subdivided Section 36, Township 38 North, Range 13 East, Fourth Principal Meridian, Forest County, Wisconsin under contract with the U.S.D.A. Forest Service using the section dimensions and subdivision data as provided by the Forest Service.

The Plat Map and notes herewith are a correct representation of the land surveyed and subdivided. I have surveyed and subdivided said section in accordance with the rules for survey of the public lands and with the statutes of the State of Wisconsin.

*Gary L. Pisoni 2-15-99*

Gary L. Pisoni R.L.S. No. S-1634  
 Iron River, Michigan



Plat ready for filing:

*[Signature]* 3-18-99  
 District Ranger

