

Stock No. 26273

FOREST CO SURVEYOR

FILE # 391205-19860000

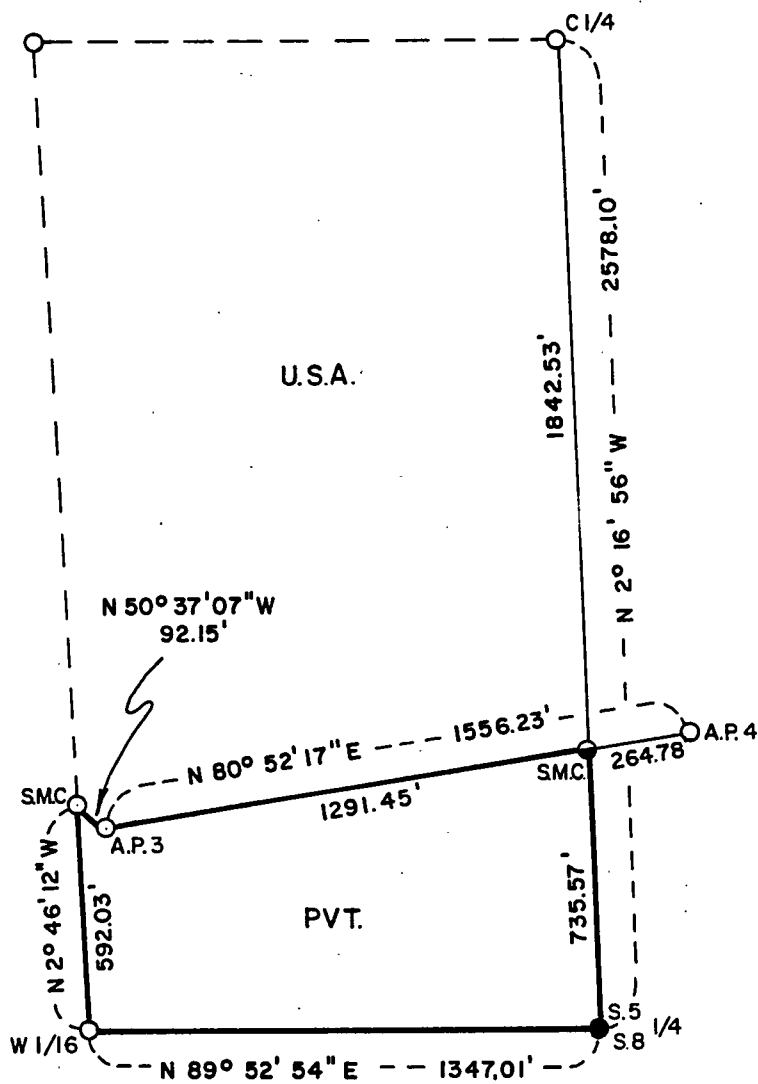
DATE _____ BY _____

Sheet 1 of 3

PLAT OF SURVEY FOR CERTIFIED LAND CORNER
RESTORATION AND ESTABLISHMENT

BEING THE CORNERS FOR THE E1/2-SW1/4 OF SECTION 5,
T.39N. R.12E., FOURTH PRINCIPAL MERIDIAN

COUNTY OF FOREST, STATE OF WISCONSIN



Scale 1" = 500'



Scale in feet.

LEGEND

- -1 inch diameter iron post, 36 inches long with a brass cap stamped to identify the corner found in place, set by dependent resurvey of 1939.
- -6 inch diameter concrete monument, 24 inches long with a brass tablet stamped to identify the corner found in place, set by dependent resurvey of 1939.
- ◉ -1 inch diameter aluminum pipe monument, 36 inches long with an aluminum cap stamped to identify the corner.
- -Boundary line marked to Forest Service standards.

NOTE: Bearings are referenced from the dependent resurvey of 1939.

Stock No. 26273

Sheet 2 of 3

SURVEY NOTES

This survey was made by Gary L. Pisoni, a Registered Land Surveyor in the State of Wisconsin, for the U.S. Department of Agriculture, Forest Service, for the purpose of recovering, restoring, establishing, marking and perpetuating the corners and boundary lines of U.S. Government land on the perimeter and within Section 5, Township 39 North, Range 12 East, Fourth Principal Meridian, Forest County, State of Wisconsin, as shown on the plat map herewith.

The bearings between corner positions are referenced to the N-S One Quarter line of Section 5 as determined by dependent resurvey of 1939. The dependent resurvey and extension survey was made by the U.S. Department of the Interior General Land Office in 1939. The corners of the dependent resurvey on the perimeter and within Section 5 were recovered as control for the subdivision survey of Section 5.

The accuracy of this survey exceeds the State requirements of 1 in 3000.

The field notes and a copy of the Plat of Survey are on file in the Forest Supervisor's office at Rhinelander, Wisconsin.

CORNERS RECOVERED AND RESTORED1. Center Quarter Corner of Section 5.

Corner position marked by a monument from the 1939 Dependent Resurvey.

Corner references:

Maple	12"	S.85°E.	19.14 feet
New corner references:			
Sugar Maple	6"	S.37°W.	27.61 feet
Sugar Maple	6"	N.48°W.	23.79 feet
Steel sign post		N.20°E.	0.90 feet

2. Quarter Corner Between Sections 5 and 8.

Corner position marked by a monument from the 1939 Dependent Resurvey.

New corner references:

Tamarack	7"	N.80°E.	18.68 feet
Black Spruce	3"	S.23°E.	6.29 feet
Black Spruce	3"	N.70°W.	8.20 feet
Steel sign post		N.04°E.	0.80 feet

3. West Sixteenth Corner Between Sections 5 and 8.

Corner position marked by a monument from the 1939 Dependent Resurvey.

Corner reference:

Black Spruce	6"	N.60°W.	16.88 feet
New corner references:			
Black Spruce	5"	N.52°E.	25.82 feet
Steel sign post		S.71°W.	0.90 feet

4. Special Meander Corner of Section 5.

Corner position marked by a monument from the 1939 Dependent Resurvey.

Corner position located at the intersection of the straight lines between the West Sixteenth corner and the Center-West Sixteenth corner and between Angle Point No. 2 and Angle Point No. 3.

Corner references:

White Pine	28"	N.74°30'E.	44.88 feet
White Pine	32"	N.26°30'W.	36.96 feet
New corner references:			
Steel sign post		S.74°E.	1.50 feet

Stock No. 26273

Sheet 3 of 3

5. Angle Point No. 3 of Section 5.

Corner position marked by a monument from the 1939 Dependent Resurvey.

Corner references:

White Pine	30"	North	28.38 feet
White Pine	24"	S.48°W.	25.74 feet

New corner reference:

Steel sign post		S.58°E.	1.55 feet
-----------------	--	---------	-----------

6. Angle Point No. 4 of Section 5.

Corner position marked by a monument from the 1939 Dependent Resurvey.

Corner references:

Hemlock	16"	S.70°30'W.	14.21 feet
Maple	6"	S.72°30'E.	16.70 feet
Hemlock	18"	S.10°E.	46.70 feet

New corner reference:

Steel sign post		N.10°E.	0.90 feet
-----------------	--	---------	-----------

CORNERS ESTABLISHED1. Special Meander Corner of Section 5.

Corner position established at the intersection of the straight lines between Angle Point No. 3 and Angle Point No. 4 and along the North and South One-Quarter line.

Corner references:

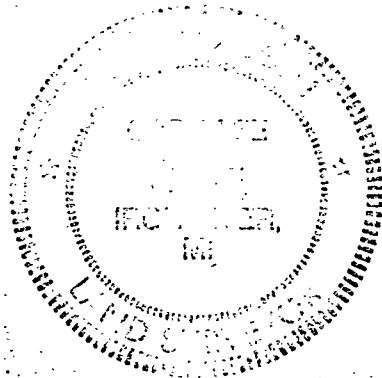
Sugar Maple	5"	S.59°E.	17.07 feet
Red Pine	7"	S.73°W.	36.74 feet
Steel sign post		N.46°E.	1.23 feet

SURVEYOR'S CERTIFICATE

State of Wisconsin)
County of Forest) ss

I, Gary L. Pisoni, a Cadastral Surveyor, and a registered land surveyor in the State of Wisconsin, hereby certify that I have surveyed and subdivided Section 5, Township 39 North, Range 12 East, Fourth Principal Meridian, State of Wisconsin.

The plat map and survey notes herewith are a correct representation of the land surveyed and divided. I have surveyed and subdivided said section in accordance with the rules for the survey of public lands and with the statutes of the State of Wisconsin.



Date of Survey: 1986

Gary L. Pisoni
Cadastral Surveyor
R.L.S. State of Wisconsin
Certificate S-1634

Survey requested by:

Greg F. Herrett
acting District Ranger

Date: 7/7/88

