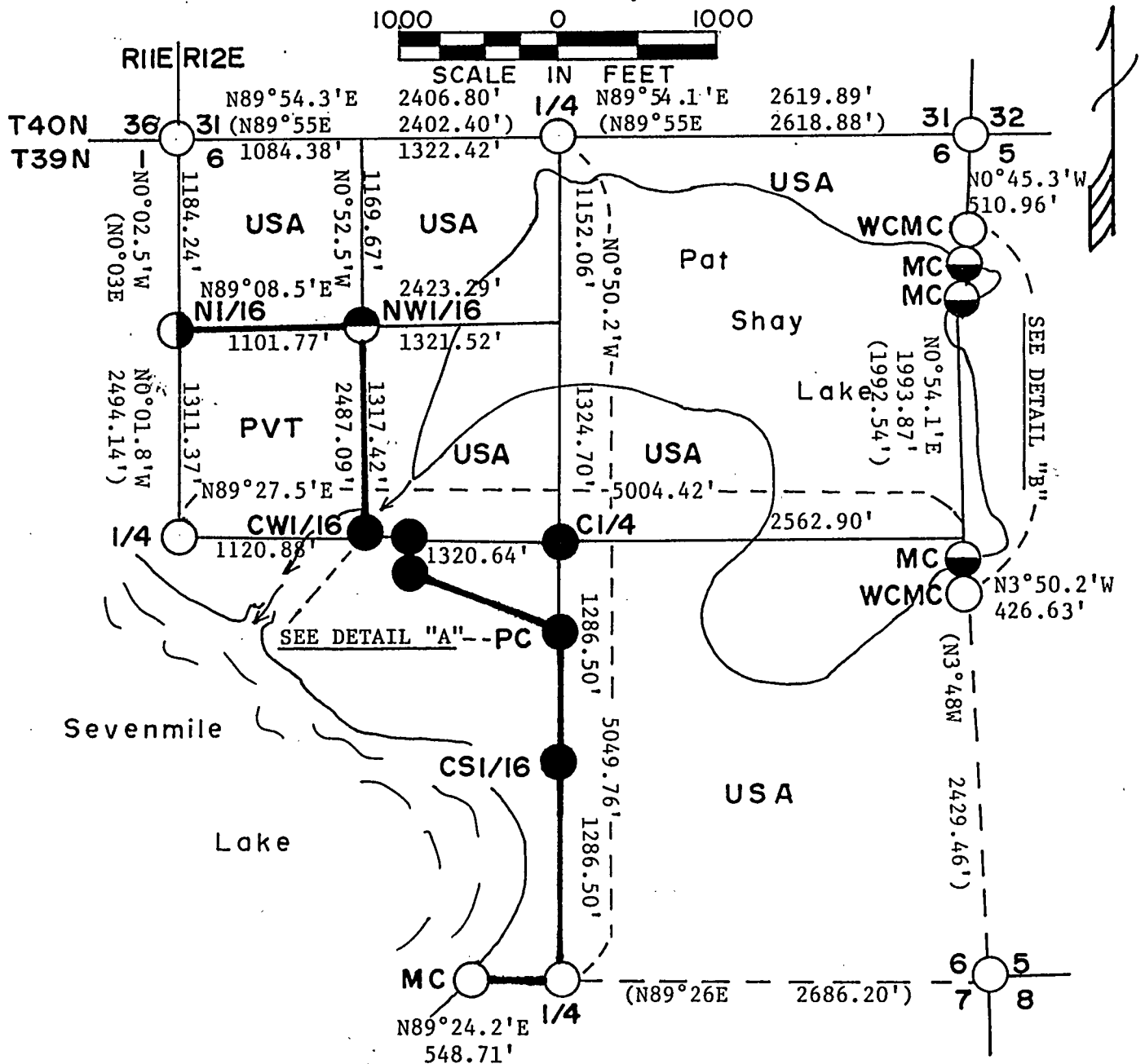


FOREST CO SURVEYOR
 FILE # 391206-19881000
 DATE _____ BY _____








PLAT OF SURVEY U. S. GOVERNMENT LAND

Being Government Lots 4, 5 & 6; Part of Lots 2 & 3; N1/2, NE1/4; N1/2, NW1/4; & SW1/4, NE1/4; SE1/4, NW1/4; NW1/4, SW1/4 & SE1/4, SE1/4, Section 6, Township 39 North, Range 12 East, Fourth Principal Meridian

FOREST COUNTY, WISCONSIN



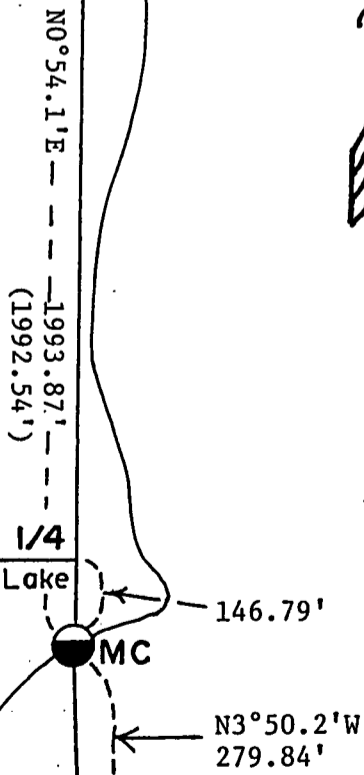
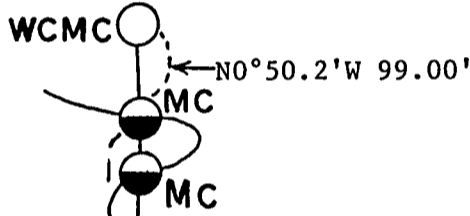
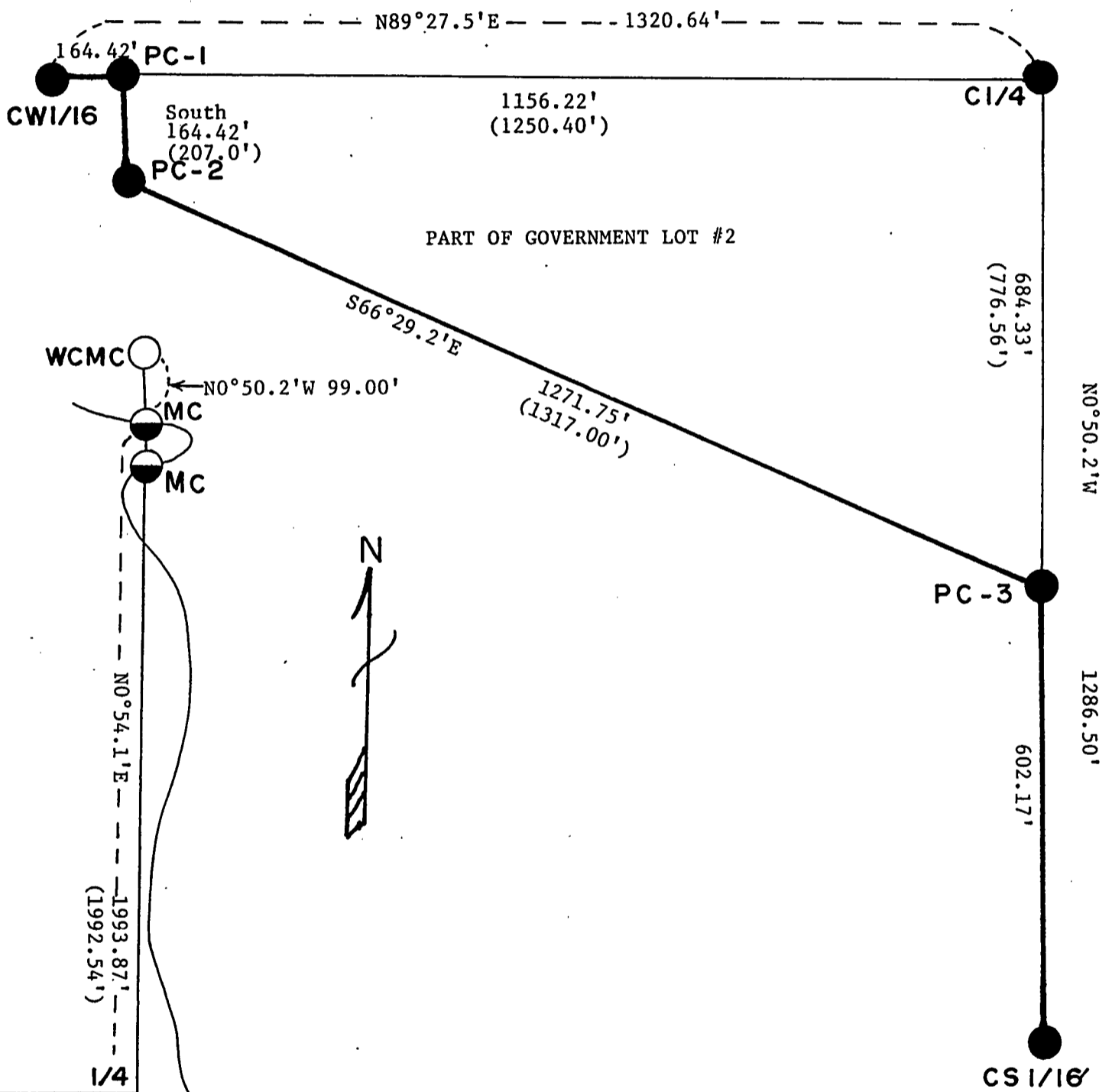
LEGEND

-  Found Dependent Resurvey Monument by G.L.O. 6" x 24" Concrete Cylinder With Brass Cap
-  Found 2 1/2" x 30" Aluminum Pipe Monument by Forest Service.
-  Set 1" x 60" Drive Type Aluminum Monument
-  Set 2 1/2" x 60" Aluminum Pipe Monument
-  Set 1" x 36" Drive Type Aluminum Monument
-  Boundary Line Marked to Standard
-  USA U.S. Government Lands

Note: (xxx.xx) distances by G.L.O. in 1939.

Conversion Factors:
 Meters to Feet - 3.280833
 Feet to Meters - .304801

DETAIL "A"



DETAIL "B"

SURVEY NOTES

This survey was made by Milo E. Stefan and party pursuant to the United States Department of Agriculture, Forest Service Contract #53-56A6-8-00187 "Cadastral Survey" for the purpose of subdividing, establishing corners and marking the boundaries of U. S. Government Lands on the perimeter and within Section 6, Township 39 North, Range 12 East, Fourth Principal Meridian, Forest County, Wisconsin, as shown on the plat map herewith.

The original government subdivision survey of this township was done in 1859 by William Daugherty. The north and west boundary of Section 6 was originally surveyed by Alfred Millard in 1858. A dependent resurvey and extension survey of Sections 5 and 6 was done by the U.S. Department of Interior, General Land Office in 1939. The corners of the dependent resurvey of 1939 were recovered and used as control for the subdivision of Section 6.

The U.S. Government acquired title to lands in Section 6 from 1931 thru 1936.

Bearings between corner positions are true bearings by reference to a solar observation. All distances shown thereon are in feet or hundredths of feet. The control traverse was measured with an electronic distance measuring instrument. Corners recovered, restored and established by this survey are marked by the monument described in the map legend. Each monumented corner position is referenced to blazed and scribed bearing trees as described as "corner references".

CORNERS RECOVERED AND RESTORED

1. Township Corner to Township 39-40 North, Range 11-12 East
Position found marked by a GLO monument, a brass cap in a concrete cylinder set in 1939 by the General Land Office.

Corner References:

13"	Red Pine	N81°E	38.84 feet
17"	Red Pine	S70°E	43.06 feet
13"	Red Pine	S10°W	73.59 feet
	Steel Sign Post	North	.50 feet

2. Section Corner to Sections 5, 6, 31 and 32; T39-40N, R12E
Position found marked by a GLO monument, a brass cap in a concrete cylinder set in 1939 by the General Land Office.

Corner References:

18"	Sugar Maple	S60°E	27.37 feet
16"	Sugar Maple	N50°E	46.83 feet
13"	Sugar Maple	N60°W	48.35 feet
9"	Hemlock	N19°E	52.63 feet
	Steel Sign Post	S30°E	1.2 feet

3. Quarter Corner to Sections 6-31; T39-40N, R12E
Position found marked by a GLO monument, a brass cap in a concrete cylinder set in 1939 by the General Land Office.

Corner References:

7"	Sugar Maple	N62°E	19.53 feet
6"	Red Maple	N35°E	10.08 feet
11"	Sugar Maple	N28°W	26.20 feet
8"	Red Maple	S88°W	19.61 feet
	Steel Sign Post	N14°W	1.5 feet

4. Quarter Corner to Sections 1-6; T39N, R11-12E

Position found marked by a GLO monument, a brass cap in a concrete cylinder set in 1939.

Corner References:

14"	Red Oak	N60°E	16.72 feet
18"	White Pine	S50°W	20.46 feet
	Power Pole	North	27.77 feet
	Northwest Corner of House	S21°E	51.37 feet
	Steel Sign Post	South	.5 feet

5. Quarter Corner to Sections 6-7; T39N, R11E

Position found marked by a GLO monument, a brass cap set in a 6" concrete cylinder in 1939.

Corner References:

6"	Red Maple	N51°E	13.53 feet
8"	White Birch	S24°E	26.50 feet
6"	Red Maple	S25°W	26.56 feet
8"	White Pine	N38°W	10.82 feet
	Steel Sign Post	North	2.2 feet

6. Meander Corner to Sections 6-7; T39N, R11E

Position found marked by a brass cap atop a 2" x 60" galvanized iron pipe set in 1967 by S802.

Corner References:

10"	Hemlock	N60°E	17.58 feet
8"	Balsam Fir	S35°W	35.09 feet
6"	White Birch	N87°E	21.77 feet
	Steel Sign Post	East	12.5 feet

7. Witness Corner Meander Corner to Sections 5-6; North Shore, T39N, R12E

Position found marked by a GLO monument, a brass cap set in a 6" concrete cylinder in 1939.

Corner References:

18"	Hemlock	N61°E	21.43 feet
16"	Red Maple	S51°E	42.74 feet
10"	White Pine	S77°W	22.27 feet
20"	White Spruce, snag	N74°W	39.24 feet
8"	Sugar Maple	N14°W	9.09 feet
	Steel Sign Post	South	1.4 feet

8. Witness Corner Meander Corner to Sections 5-6; South Shore, T39N, R12E

Position found marked by a GLO monument, a brass cap set in a 6" concrete cylinder in 1939.

Corner References:

12"	Red Pine	N60°E	17.50 feet
5"	White Birch	S16°E	7.08 feet
14"	White Pine	S38°W	20.62 feet
12"	White Pine	N44°W	14.90 feet
	Steel Sign Post	Southeast	1.1 feet

9. North Sixteenth to Sections 1-6; T39N, R11-12E
Position found marked by a 2 1/2" diameter aluminum pipe monument, 30" long as set in 1981 by S-1107.

Corner References:

12"	Red Pine	N67°E	39.23 feet
13"	White Pine	S39°W	24.93 feet
11"	Red Pine	S44°E	35.45 feet
	Steel Sign Post	North	.50 feet

10. Meander Corner to Sections 5-6; North Shore, T39N, R12E
Position restored from an original 1859 bearing tree and call from the Witness Corner by GLO in 1939.

Corner References:

5"	Red Maple	N29°E	47.10 feet
8"	Red Pine	N25°W	102.31 feet
4"	Red Maple	N11°E	35.60 feet
	Steel Sign Post	Northwest	1.1 feet

11. Meander Corner to Sections 5-6; South Shore of a Bay of Pat Shay Lake
Position found marked by a cedar post by 1939 GLO survey.

Corner References:

6"	Steel Sign Post	South	1.0 feet
No other references within a reasonable distance - trees are all dead.			

12. Meander Corner to Sections 5-6, South Shore of Pat Shay Lake
Position found marked by a rotted off tamarack post and scribed BT from 1939 GLO survey.

Corner References:

3"	Black Spruce	S11°E	7.71 feet
2"	Tamarack	S27°W	26.82 feet
4"	Tamarack	S59°W	43.84 feet
	Steel Sign Post	South	1.9 feet

CORNERS ESTABLISHED

1. Center Quarter Corner to Section 6
Position established at the intersection of straight lines between opposing Quarter Corners to Section 6.

Corner References:

24"	White Pine	N76°W	44.43 feet
10"	Hemlock	N23°W	22.22 feet
	Steel Sign Post	Northeast	1.0 feet

2. Northwest Sixteenth Corner to Section 6
Position established at the intersection of the North and West Sixteenth lines to Section 7.

Corner References:

20"	White Pine	N85°E	56.80 feet
10"	White Pine	N25°E	54.18 feet
	Steel Sign Post	South	1.0 feet

Stock No. 26273

Sheet 6 of 7

3. Center West Sixteenth Corner to Section 7

Position established at the proportionate distance and on line between the Center Quarter and West Quarter to Section 6.

Corner References:

10"	White Pine	S45°W	7.97 feet
10"	White Pine	N20°W	13.33 feet
	Steel Sign Post	North	1.8 feet

4. Center South Sixteenth Corner to Section 7

Position established on line and at midpoint between the Center Quarter and South Quarter to Section 6.

Corner References:

12"	Hemlock	N35°E	29.47 feet
10"	Sugar	S35°E	39.39 feet
	Steel Sign Post	North	.8 feet

5. Property Corner #1

Position established on the East-West Quarter line feet east of the Center West Sixteenth as called for in

Corner References:

11"	Yellow Birch	S55°W	7.38 feet
8"	Hemlock	N68°W	8.07 feet
	Steel Sign Post	West	1.6 feet

6. Property Corner #2

Position established due south from property corner #1 and the intersection of the north right of way line to Forest Road #2179.

Corner References:

10"	Hemlock	N38°E	64.40 feet
11"	Sugar Maple	N38°W	64.20 feet
	Steel Sign Post	Southeast	1.1 feet

7. Property Corner #3

Position established on the North-South Quarter line at the intersection of the North right of way to Forest Road #2179. Center Quarter Corner bears N0°50'-12"W, 684.33 feet.

Corner References:

14"	Red Oak	N38°W	22.30 feet
4"	Red Maple	N36°E	15.48 feet
	Steel Sign Post	N66°W	1.6 feet

Stock No. 26273

Sheet 7 of 7

SURVEYORS AFFIDAVIT

I, Milo E. Stefan, Land Surveyor, registered in the State of Wisconsin, hereby certify: That I have surveyed and subdivided Section 6, T39N, R12E, Fourth Principal Meridian, County of Forest, State of Wisconsin, in accordance with the rules of the survey of public lands and with the statutes of the State of Wisconsin. The plat map and survey notes are an accurate representation of the corners recovered and established.

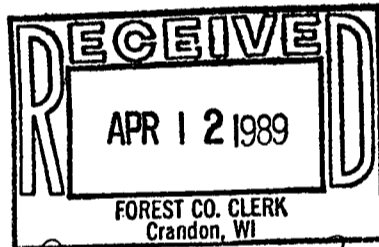
Date of Survey: October 1988



Milo E. Stefan
Milo E. Stefan
Registered Land Surveyor
State of Wisconsin
Certificate #1558

Plat is ready for filing:

James Gorn 12/6/88
District Ranger Date



Dora C. James