

Stock No. 26273

FOREST CO SURVEYOR

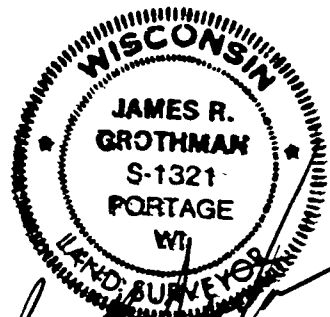
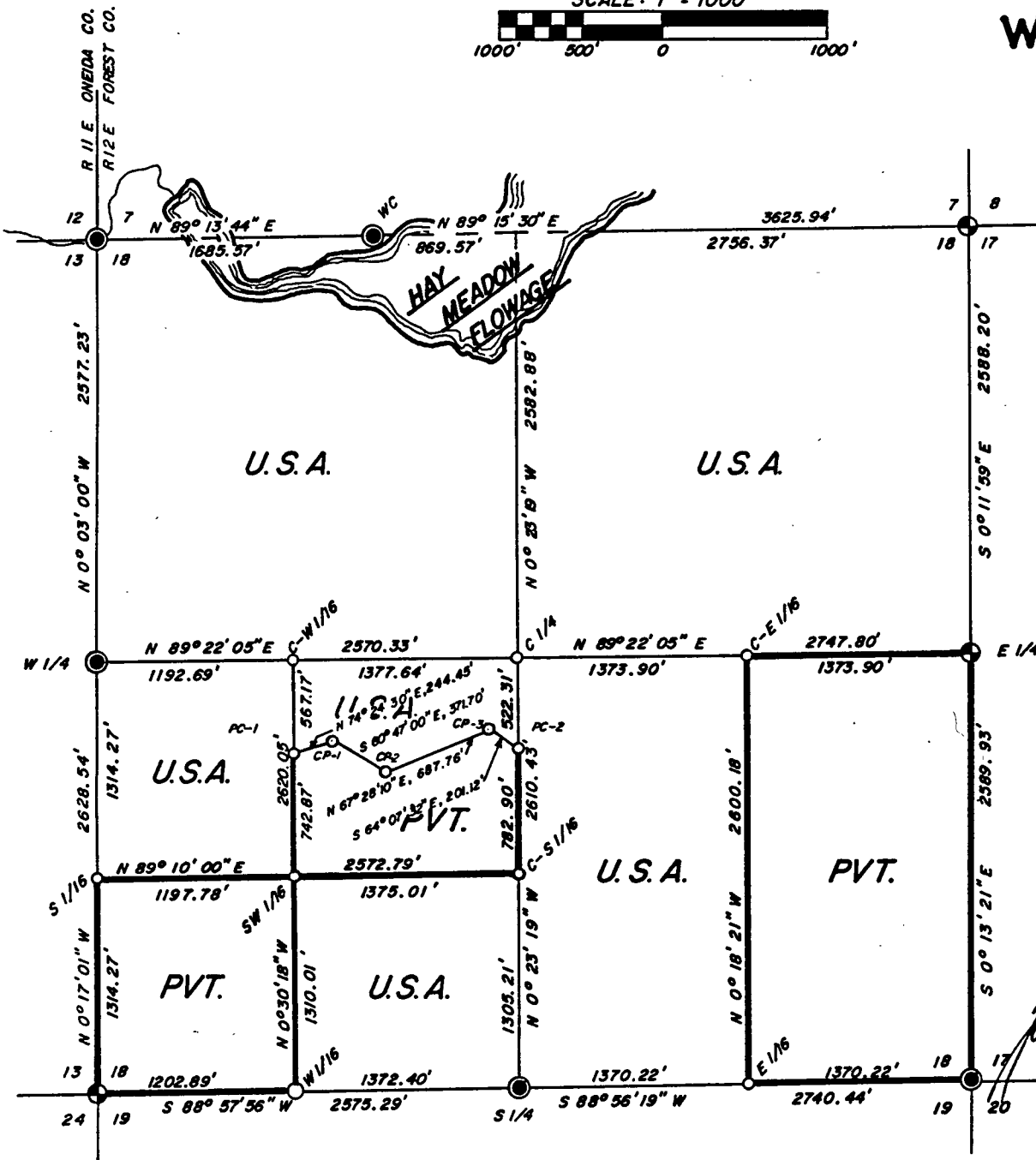
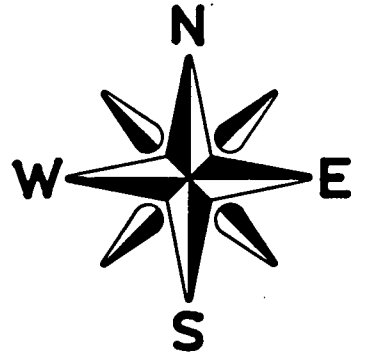
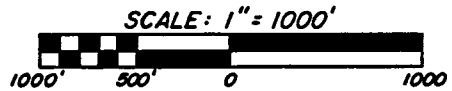
FILE # 391218-19861010

DATE _____ BY _____

PLAT OF SURVEY U.S. GOVERNMENT LAND

Sheet 1 of 10

BEING THE NORTH 1/2, THE WEST 1/2 OF THE SE 1/4, THE NW 1/4 OF THE SW 1/4, AND THE SE 1/4 OF THE SW 1/4, SECTION 18, TOWN 39 NORTH, RANGE 12 EAST, FOURTH PRINCIPAL MERIDIAN, FOREST COUNTY, WISCONSIN.

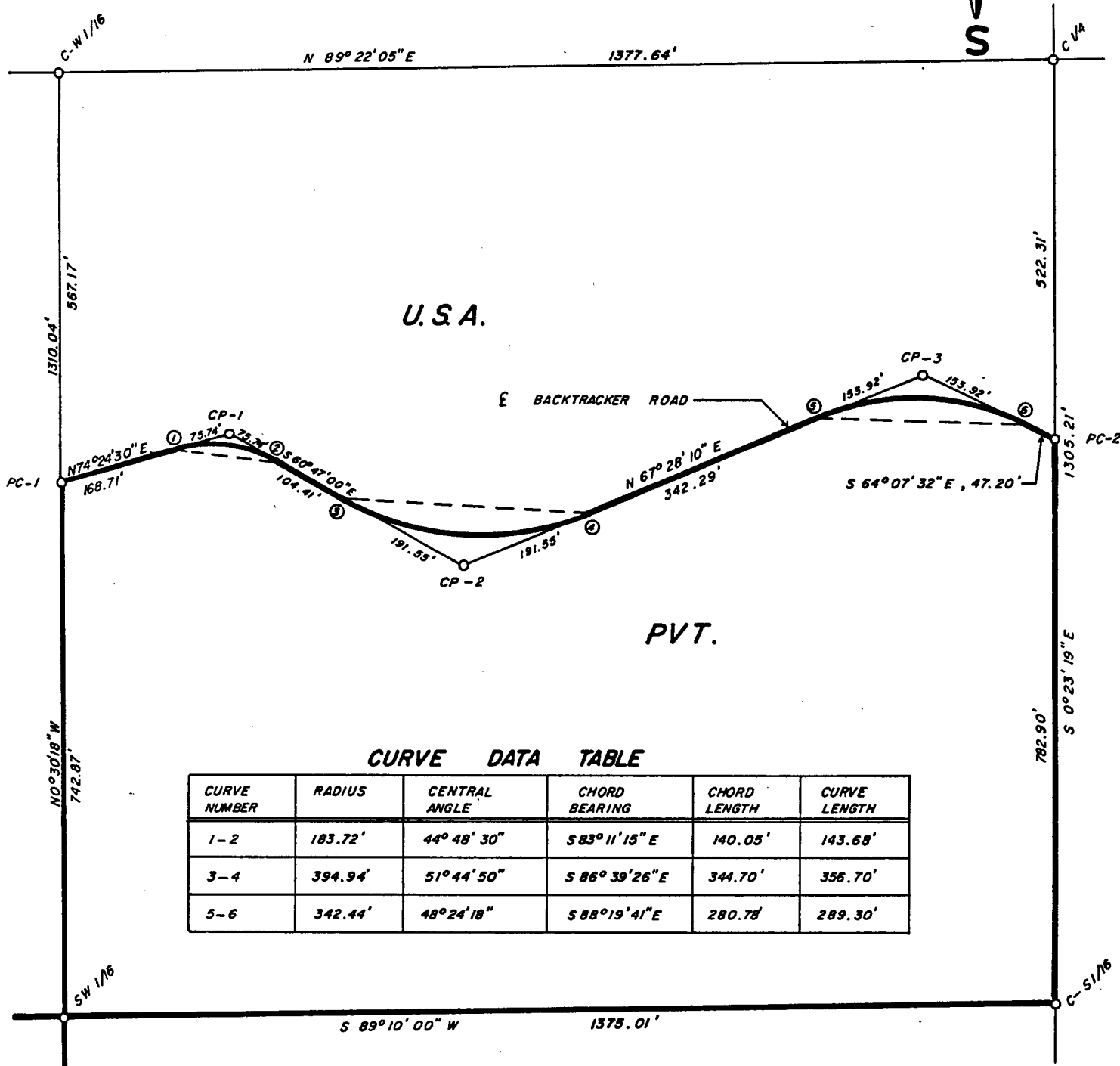
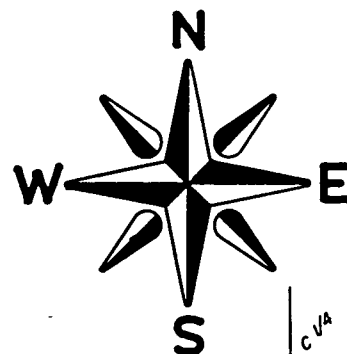
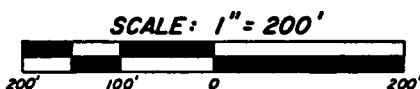


James R. Grothman
10/10/86

LEGEND

- FOUND 6" DIA. G.L.O. CONCRETE MONUMENT w/BRASS CAP & EMBEDDED IRON ROD.
- ⊕ FOUND 2" DIA. G.L.O. IRON PIPE w/BRASS CAP.
- SET 1" DIA. X 60" LONG BERNTSEN ALUMINUM PIPE MONUMENT w/ALUM. CAP.
- SET 1" DIA. X 36" LONG BERNTSEN ALUMINUM PIPE MONUMENT w/ALUM. CAP.
- U.S. GOVERNMENT LAND BOUNDARY LINE MARKED AND POSTED TO USES. STANDARDS.
- PC-1 PROPERTY CORNER
- CP-1 CURVE POINT

PLAT OF SURVEY U.S. GOVERNMENT LAND



CURVE DATA TABLE

CURVE NUMBER	RADIUS	CENTRAL ANGLE	CHORD BEARING	CHORD LENGTH	CURVE LENGTH
1-2	183.72'	44° 48' 30"	S 83° 11' 15" E	140.05'	143.68'
3-4	394.94'	51° 44' 50"	S 86° 39' 26" E	344.70'	356.70'
5-6	342.44'	48° 24' 18"	S 88° 19' 41" E	280.78'	289.30'

Stock No. 26273

Sheet 3 of 10

T 39 N R 12 E, SECTION 18

SURVEY NOTES

This survey is made by GENERAL ENGINEERING COMPANY, INC. pursuant to United States Department of Agriculture, Forest Service Contract "No. 53-56A6-6-00020, Cadastral Survey" for the purpose of recovering, restoring, establishing, marking and perpetuating the corners and boundary lines of the U.S. Government land on the perimeter and within Section 18, T39N, R12E, Fourth Principal Meridian, Forest County, Wisconsin as shown on the plat herewith.

The original government survey of the township was made in 1859 by William E. Daugherty.

The U.S. Government acquired title to the lands in Section 18, in 1930, 1934, 1941 and 1983.

This township was resurveyed by the General Land Office in 1941.

Bearings between corner positions are true bearings by reference to a solar observation. All distances shown thereon are in feet and hundredths of feet. The control traverse was measured by use of electronic distance measuring equipment to an accuracy of one part in 20,000. Corners recovered, restored, and established by this survey are marked by the monument described in the map legend. Each monumented corner position is referenced to blazed and scribed bearing trees and described reference objects.

CORNERS RECOVERED1. Corner to Sections 12 and 13, T39N R11E and Sections 7 and 18, T39N R12E

Corner is monumented by a G.L.O. brass cap.

Corner References:

Red Pine	10"	N14 ⁰ E	107.58 feet
White Pine	14"	N11 ⁰ E	98.97 feet
Red Pine	7"	N6 ⁰ E	93.31 feet

2. Quarter Corner to Section 13, T39N R11E and Section 18, T39N R12E

Corner is monumented by a G.L.O. brass cap.

Corner References:

Red Pine	10"	S80 ⁰ E	18.00 feet
White Pine	8"	N30 ⁰ W	12.37 feet
White Pine	9"	S54 ⁰ W	37.95 feet
Red Pine	7"	S16 ⁰ E	24.00 feet
Steel Sign Post		East	1.00 feet

Stock No. 26273

Sheet 4 of 10

T 39 N R 12 E, SECTION 18

3. Quarter Corner to Sections 18 and 19

Corner is monumented by a G.L.O. brass cap.

Corner References:

Cedar	8"	S77°E	22.21 feet
Cedar	12"	S28°E	25.79 feet
White Birch	4"	S80°W	22.08 feet
Cedar	5"	N13°W	41.87 feet
Steel Sign Post		South	1.00 foot

4. Corner to Sections 13 and 24, T39N R11E and Sections 18 and 19 T39N R12E

Corner is monumented by a G.L.O. brass cap.

Corner References:

Red Pine	10"	N71°E	14.43 feet
Red Pine	12"	S27°E	25.54 feet
Red Pine	10"	S31°W	16.77 feet
Red Pine	8"	N67°W	20.26 feet
Steel Sign Post		Southwest	1.00 foot

5. Corner to Sections 17, 18, 19 and 20, T39N R12E

Corner is monumented by a G.L.O. brass cap.

Corner References:

1"x36" Aluminum Monument w/Alum. cap set		S89°03'22"E	35.00 feet
1"x36" Aluminum Monument w/Alum. cap set		S6°43'52"W	35.00 feet
1"x36" Aluminum Monument w/Alum. cap set		S88°56'19"W	35.00 feet
1"x36" Aluminum Monument w/Alum. cap set		N0°13'21"W	35.00 feet
Steel Sign Post		Southwest	1.00 foot

6. Quarter Corner to Sections 18 and 17, T39N R12E

Corner is monumented by a G.L.O. brass cap.

Corner References:

Cedar	11"	S61°W	7.92 feet
Cedar	11"	S21°E	17.16 feet
Cedar	10"	S69°E	10.00 feet
Cedar	10"	N18°E	22.55 feet
Steel Sign Post		Northeast	1.00 foot

Stock No. 26273

Sheet 5 of 10

T 39 N R 12 E, SECTION 18

7. Corner to Sections 7, 8, 17 and 18, T39N R12E

Corner is monumented by a G.L.O. brass cap.

Corner References:

Spruce	3"	N83 ^o E	20.20 feet
Spruce	2"	N13 ^o W	24.90 feet
Spruce	3"	S32 ^o W	36.00 feet
Spruce	3"	S8 ^o W	52.00 feet
Steel Sign Post		East	1.00 foot

8. Witness Corner to the Quarter Corner to Sections 7 and 18, T39N R12E

Corner is monumented by a G.L.O. brass cap.

Corner References:

Red Pine	18"	N20 ^o E	21.89 feet
White Pine	14"	S78 ^o W	22.21 feet
White Pine	10"	S7 ^o E	9.45 feet
Steel Sign Post		South	1.00 foot

Stock No. 26273

6 of 10

T 39 N R 12 E, SECTION 18

CORNERS ESTABLISHED1. South 1/16 Corner between Section 18, T39N R12E and Section 13, T39N R11E

Corner is monumented by a 1"x36" aluminum pipe with a 3" aluminum tablet stamped to identify corner. The corner is set at the mid-point and on line between the corner to Sections 13 and 24, T39N R11E and Sections 18 and 19, T39N R12E and the Quarter Corner between Section 13, T39N R11E and Section 18, T39N R12E.

Corner References:

Poplar	5"	S88°E	32.20 feet
Poplar	13"	S58°W	4.74 feet
Poplar	5"	N30°E	18.15 feet
Steel Sign Post		South	1.00 foot

2. West 1/16 Corner between Sections 18 and 19, T39N R12E

Corner is monumented by a 1"x60" aluminum pipe with a 3" aluminum tablet stamped to identify corner. The corner is set at proportionate distance on line between the corner to Sections 13 and 24, T39N R11E and Sections 18 and 19, T39N R12E and the Quarter Corner between Sections 18 and 19, T39N R12E.

Corner References:

Tamarack	5"	N9°W	55.63 feet
Tamarack	10"	N88°E	23.75 feet
Tamarack	6"	N89°W	23.12 feet
Steel Sign Post		Southeast	1.00 foot

3. Center - South 1/16 Corner Section 18, T39N R12E

Corner is monumented by a 1"x36" aluminum pipe with a 3" aluminum tablet stamped to identify corner. The corner is set at the mid-point and on line between the Quarter Corner to Sections 18 and 19 and the Center Quarter Corner of Section 18.

Corner References:

Spruce	7"	S21°E	10.00 feet
Spruce	8"	S75°E	9.09 feet
Spruce	5"	N70°W	5.79 feet
Steel Sign Post		South East	1.00 foot

Stock No. 26273

7 of 10

T 39 N R 12 E, SECTION 18

4. Center - West 1/16 Corner Section 18, T39N R12E

Corner is monumented by a 1"x36" aluminum pipe with a 3" aluminum tablet stamped to identify corner. The corner is set at proportionate distance on line between the Quarter Corner to Section 18, T39N R12E and Section 13, T39N R11E and the Center Quarter Corner, Section 18, T39N R11E.

Corner References:

Red Pine	6"	N65°E	21.13 feet
Poplar	8"	N66°W	8.83 feet
Red Pine	11"	S24°W	19.38 feet
Steel Sign Post		Southeast	1.00 foot

5. Center 1/4 Corner of Section 18, T39N R12E

Corner is monumented by a 1"x36" aluminum pipe with a 3" aluminum tablet stamped to identify corner. The corner is set at the intersections of the lines connecting the Quarter Corners on the exterior of Section 18.

Corner References:

Red Pine	10"	S26°W	26.96 feet
Maple	4"	S38°E	8.60 feet
Red Pine	8"	S67°W	16.16 feet
Red Pine	8"	N61°E	25.17 feet
Steel Sign Post		East	1.00 foot

6. Center - East 1/16 Corner Section 18, T39N R12E

Corner is monumented by a 1"x36" aluminum pipe with a 3" aluminum tablet stamped to identify corner. The corner is set at the mid-point and on line between the Quarter Corner to Sections 18 and 17 and the Center Quarter Corner, Section 18, T39N R12E.

Corner References:

Maple	6"	N43°E	28.51 feet
Maple	8"	West	15.05 feet
White Birch	12"	North	37.34 feet
Steel Sign Post		South	1.00 foot

7. East 1/16 Corner between Sections 18 and 19

Corner is monumented by a 1"x36" aluminum pipe with a 3" aluminum tablet stamped to identify corner. The corner is set at the mid-point and on line between the Quarter Corner to Sections 18 and 19, and the corner to Sections 17, 18, 19 and 20.

Corner References:

Balsam	7"	N20°E	13.51 feet
Balsam	9"	N74°W	15.62 feet
Maple	7"	N63°E	6.68 feet
Steel Sign Post		Southwest	1.00 foot

Stock No. 26273

8 of 10

T 39 N R 12 E, SECTION 18

8. Southwest 1/16 Corner, Section 18, T39NR12E

Corner is monumented by a 1"x36" aluminum pipe with a 3" aluminum tablet stamped to identify corner. The corner is set at the intersection of the lines connecting the 1/6 corners on the exterior of the Southwest Quarter of Section 18.

Corner References:

White Pine	24"	S44 ^o W	36.00 feet
Maple	8"	S67 ^o W	41.00 feet
Maple	10"	N51 ^o W	23.18 feet
Steel Sign Post		South	1.00 feet ±

9. Property Corner Number 1

Corner is monumented by a 1"x36" aluminum pipe with a 3" aluminum tablet stamped to identify corner. The corner is set at the intersection of the centerline of Backtracker Road and the west line of the Northeast Quarter of the Southwest Quarter, Section 18, T39N R12E.

Corner References:

White Pine	18"	N79 ^o W	49.15 feet
Poplar	11"	S32 ^o W	32.76 feet
Cherry	6"	West	100.81 feet

10. Property Corner Number 2

Corner is monumented by a 1"x36" aluminum pipe with a 3" aluminum tablet stamped to identify corner. The corner is set at the intersection of the centerline of Backtracker Road and the east line of the Northeast Quarter of the Southwest Quarter, Section 18, T39N R12E.

Corner References:

White Pine	10"	N7 ^o E	29.42 feet
White Pine	10"	S77 ^o E	54.86 feet
White Pine	10"	N05 ^o W	60.30 feet

11. Curve Point Number 1

Corner is monumented by a 1"x36" aluminum pipe with a 3" aluminum tablet stamped to identify corner. The corner is set at the intersection of the centerlines of Backtracker Road.

Corner References:

White Oak	15"	S85 ^o E	39.48 feet
Norway Pine	5"	S41 ^o W	14.07 feet
Poplar	6"	S9 ^o E	56.40 feet
Steel Sign Post		North	1.00 foot

Stock No. 26273

9 of 10

T 39 N R 12 E, SECTION 18

12. Curve Point Number 2

Corner is monumented by a 1"x36" aluminum pipe with a 3" aluminum tablet stamped to identify corner. The corner is set at the intersections of the centerlines of Backtracker Road.

Corner References:

Red Pine	12"	N52 ^o E	11.00 feet
Red Pine	14"	S32 ^o E	28.12 feet
White Pine	16"	N29 ^o W	24.10 feet
Steel Sign Post		South	1.00 foot

13. Curve Point Number 3

Corner is monumented by a 1"x36" aluminum pipe with a 3" aluminum tablet stamped to identify corner. The corner is set at the intersections of the centerlines of Backtracker Road.

Corner References:

Red Pine	10"	S80 ^o E	12.15 feet
Red Pine	16"	N24 ^o W	51.79 feet
Red Pine	17"	S23 ^o E	68.42 feet
Steel Sign Post		North	2.00 feet

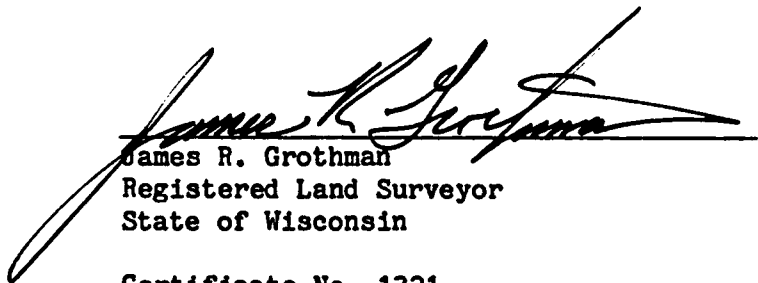
Stock No. 26273

T 39 N R 12 E, SECTION 18

SURVEYOR'S AFFIDAVIT

State of Wisconsin)
 ss
County of Columbia)

I, James R. Grothman, Land Surveyor, Registered in the State of Wisconsin, hereby certify: That I have surveyed and subdivided Section 18, T39N, R12E, Fourth Principal Meridian, County of Forest, State of Wisconsin, in accordance with the rules of the survey of public lands and with the statutes of the State of Wisconsin. The plat map and survey notes are an accurate representation of the corners recovered and established.

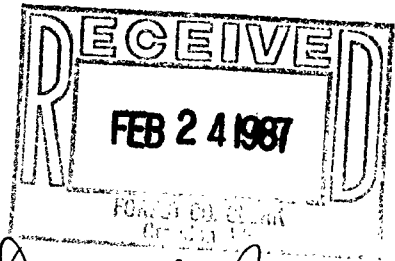

James R. Grothman
Registered Land Surveyor
State of Wisconsin

Certificate No. 1321

Date of Survey: June-September 1986



Plat ready for filing:  1/6/87
District Ranger Date



Dora C. James
Forest Co. Clerk