

Stock No. 26273

FOREST CO SURVEYOR

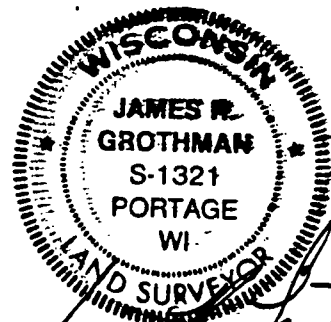
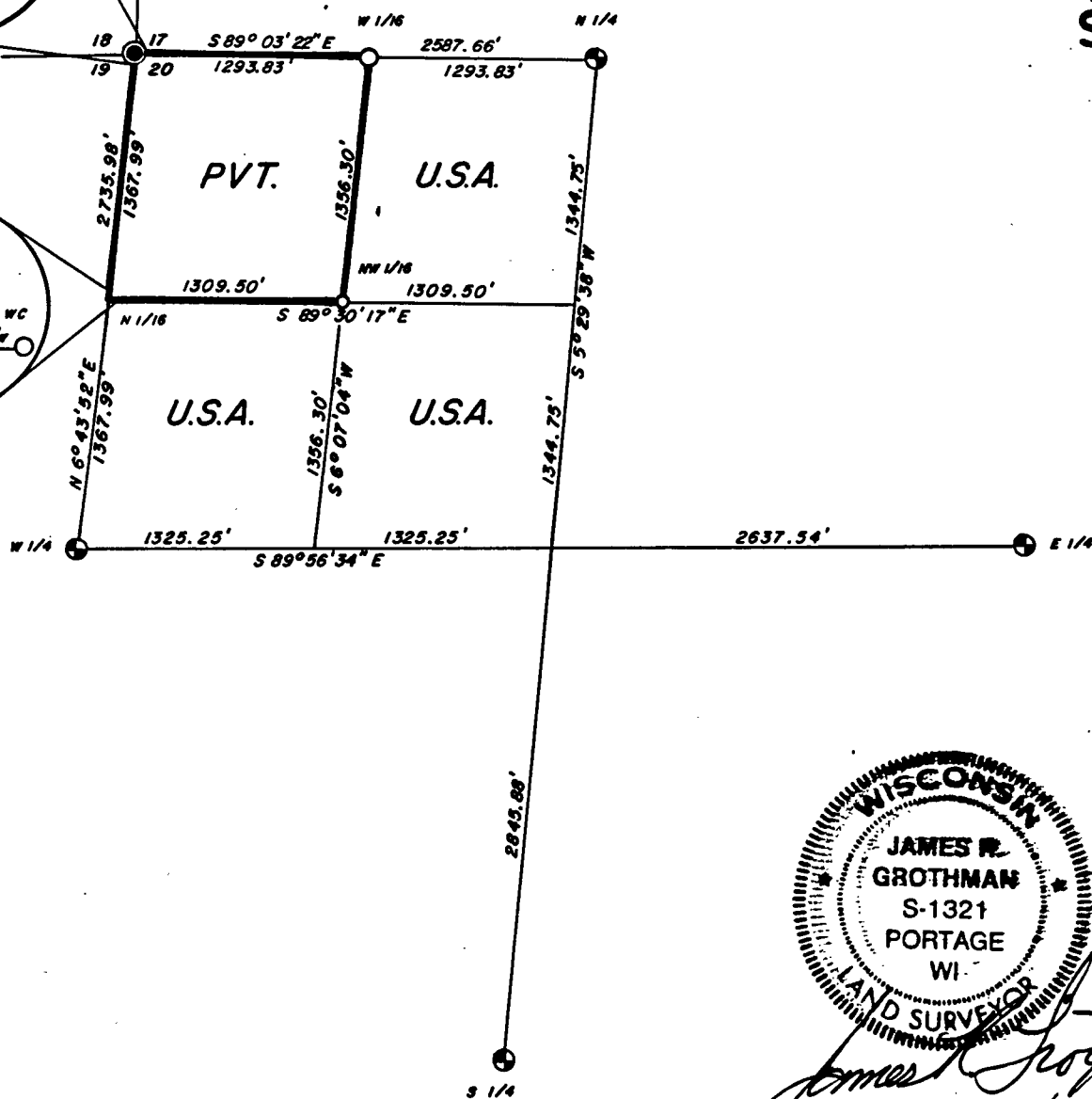
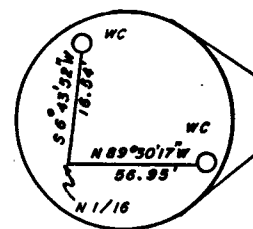
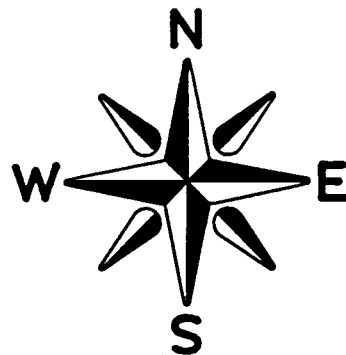
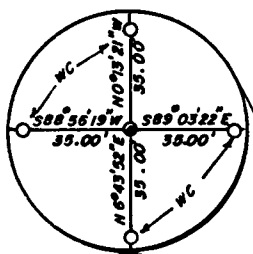
FILE # 391220-19861010

DATE _____ BY _____

PLAT OF SURVEY U.S. GOVERNMENT LAND

Sheet 1 of 5

BEING THE NW 1/4 EXCEPT THE NW 1/4 OF THE NW 1/4, SECTION 20,
TOWNSHIP 39 NORTH, RANGE 12 EAST, FOURTH PRINCIPAL MERIDIAN,
FOREST COUNTY, WISCONSIN.



James R. Grothman
10/10/86

LEGEND

- FOUND, 6" DIA. G.L.O. CONCRETE MONUMENT w/ BRASS CAP & EMBEDDED IRON ROD.
- ⊕ FOUND, 2" DIA. G.L.O. IRON PIPE w/ BRASS CAP.
- SET, 1" DIA. X 60" LONG BERNTSEN ALUMINUM PIPE MONUMENT w/ ALUM. CAP.
- ◊ SET, 1" DIA. X 36" LONG BERNTSEN ALUMINUM PIPE MONUMENT w/ ALUM. CAP.
- U.S. GOVERNMENT LAND BOUNDARY LINE, MARKED AND POSTED TO USFS STANDARDS.

Stock No. 26273

Sheet 2 of 5

T 39 N R 12 E, SECTION 20

SURVEY NOTES

This survey is made by GENERAL ENGINEERING COMPANY, INC. pursuant to United States Department of Agriculture, Forest Service Contract "No. 53-56A6-6-00020, Cadastral Survey" for the purpose of recovering, restoring, establishing, marking and perpetuating the corners and boundary lines of the U.S. Government land on the perimeter and within Section 20, T39N, R12E, Fourth Principal Meridian, Forest County, Wisconsin as shown on the plat herewith.

The original government survey of the township was made in 1859, by William E. Daugherty.

The U.S. Government acquired title to the lands in Section 20, in 1931, 1934 and 1952.

This township was resurveyed by the General Land Office in 1941.

Bearings between corner positions are true bearings by reference to a solar observation. All distances shown thereon are in feet and hundredths of feet. The control traverse was measured by use of electronic distance measuring equipment to an accuracy of one part in 20,000. Corners recovered, restored and established by this survey are marked by the monument described in the map legend. Each monumented corner position is referenced to blazed and scribed bearing trees and described reference objects.

CORNERS RECOVERED1. Corner to Sections 17-18-19-20

Corner is monumented by a G.L.O. brass cap.

Corner References:

1"x36" Alum Monument w/Alum Cap Set	S89°03'22"E	35.00 feet
1"x36" Alum Monument w/Alum Cap Set	S6°43'52"W	35.00 feet
1"x36" Alum Monument w/Alum Cap Set	S88°56'19"W	35.00 feet
1"x36" Alum Monument w/Alum Cap Set	N0°13'21"W	35.00 feet
Sign Post	Southwest	1.00 foot

2. Quarter Corner to Sections 17 & 20

Corner is monumented by a G.L.O. brass cap.

Corner References:

Birch	5"	West	51.00 feet
Maple	6"	N42°E	15.04 feet
Maple	4"	S67°E	18.86 feet
White Oak	8"	S5°W	32.33 feet
Sign Post		West	1.00 foot

Stock No. 26273

Sheet 3 of 5

T 39 N R 12 E, SECTION 20

3. Quarter Corner to Sections 19-20

Corner is monumented by a G.L.O. brass cap.

Corner References:

Maple	14"	North	7.60 feet
Hemlock	13"	N54°W	27.02 feet
Maple	15"	S49°E	40.25 feet
Maple	6"	S12°W	38.12 feet
Steel Sign Post		West	1.00 foot

4. Quarter Corner to Sections 20-29

Corner is monumented by a G.L.O. brass cap.

Corner References:

Hemlock	12"	N65°W	12.77 feet
Maple	10"	N15°E	37.87 feet
Hemlock	7"	S77°E	27.19 feet
Maple	24"	S27°E	10.46 feet
Steel Sign Post		South	1.00 foot

5. Quarter Corner to Sections 20-21

Corner is monumented by a G.L.O. brass cap.

Corner References:

Cedar	10"	N88°E	19.55 feet
Cedar	8"	S10°E	36.12 feet
Cedar	9"	S73°W	26.90 feet
Yellow Birch	12"	N33°W	23.76 feet
Steel Sign Post		North	1.00 foot

Stock No. 26273

Sheet 4 of 5

N 39 N R 12 E, SECTION 20

CORNERS ESTABLISHED1. West 1/16 to Sections 17-20

Corner is monumented by a 1"x60" aluminum pipe with a 3" aluminum tablet stamped to identify corner. The corner is set at the midpoint and on line between the Corner to Sections 17-18-19-20 and the Quarter Corner to Sections 17 and 20.

Corner References:

Cedar	7"	S86°W	40.22 feet
Balsam	5"	S39°W	6.42 feet
Balsam	5"	S83°E	11.83 feet
Steel Sign Post		Northeasterly	2.00 feet

2. Northwest 1/16 Corner, Section 20

Corner is monumented by a 1"x36" aluminum pipe with a 3" aluminum tablet stamped to identify corner. The corner is set at the intersection of the North-South 1/16 line and the East-West 1/16 line, Northwest Quarter, Section 20.

Corner References:

White Birch	13"	N23°E	28.74 feet
Maple	16"	S73°W	41.16 feet
Maple	4"	S75°E	60.20 feet
Steel Sign Post		East	1.00 foot

3. Witness Corner for the North 1/16 Corner to Sections 19-20

Corner is monumented by a 1"x60" aluminum pipe with a 3" aluminum tablet stamped to identify corner. The corner is set on line and 16.54 feet North of the midpoint between the Corner to Sections 17-18-19-20 and the Quarter Corner to Sections 19-20.

Corner References:

Tamarack	5"	N53°W	65.63 feet
Tamarack	5"	N30°E	5.74 feet
Tamarack	5"	N4°W	53.88 feet

Stock No. 26273

Sheet 5 of 5

T 39 N R 12 E, SECTION 20

4. Witness Corner for the North 1/16 Corner to Sections 19-20

Corner is monumented by a 1"x60" aluminum pipe with a 3" aluminum tablet stamped to identify corner. The corner is set on line and 56.95 feet East of the midpoint between the corner to Sections 17-18-19-20 and the Quarter Corner to Sections 19 and 20 and the center of Section 20.

Corner References:

Tamarack	4"	S15°E	35.28 feet
Tamarack	5"	S72°E	30.29 feet
Tamarack	5"	N81°E	76.39 feet
Steel Sign Post		South	1.00 foot

SURVEYOR'S AFFIDAVIT

State of Wisconsin)
 County of Columbia) SS

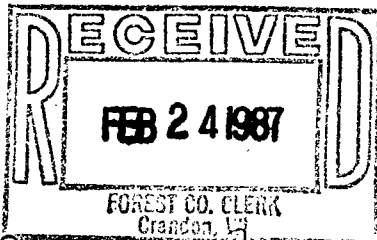
I, James R. Grothman, Land Surveyor, Registered in the State of Wisconsin, hereby certify: That I have surveyed and subdivided Section 20, T39N, R12E, Fourth Principal Meridian, County of Forest, State of Wisconsin, in accordance with the rules of the survey of public lands and with the statutes of the State of Wisconsin. The plat map and survey notes are an accurate representation of the corners recovered and established.



James R. Grothman
 James R. Grothman
 Registered Land Surveyor
 State of Wisconsin
 Certificate No. 1321

Date of Survey: June-September 1986

Plat ready for filing:

N. Frank Hubby
District Ranger*1/6/87*
Date

Dora C. James
 Forest Co. Clerk