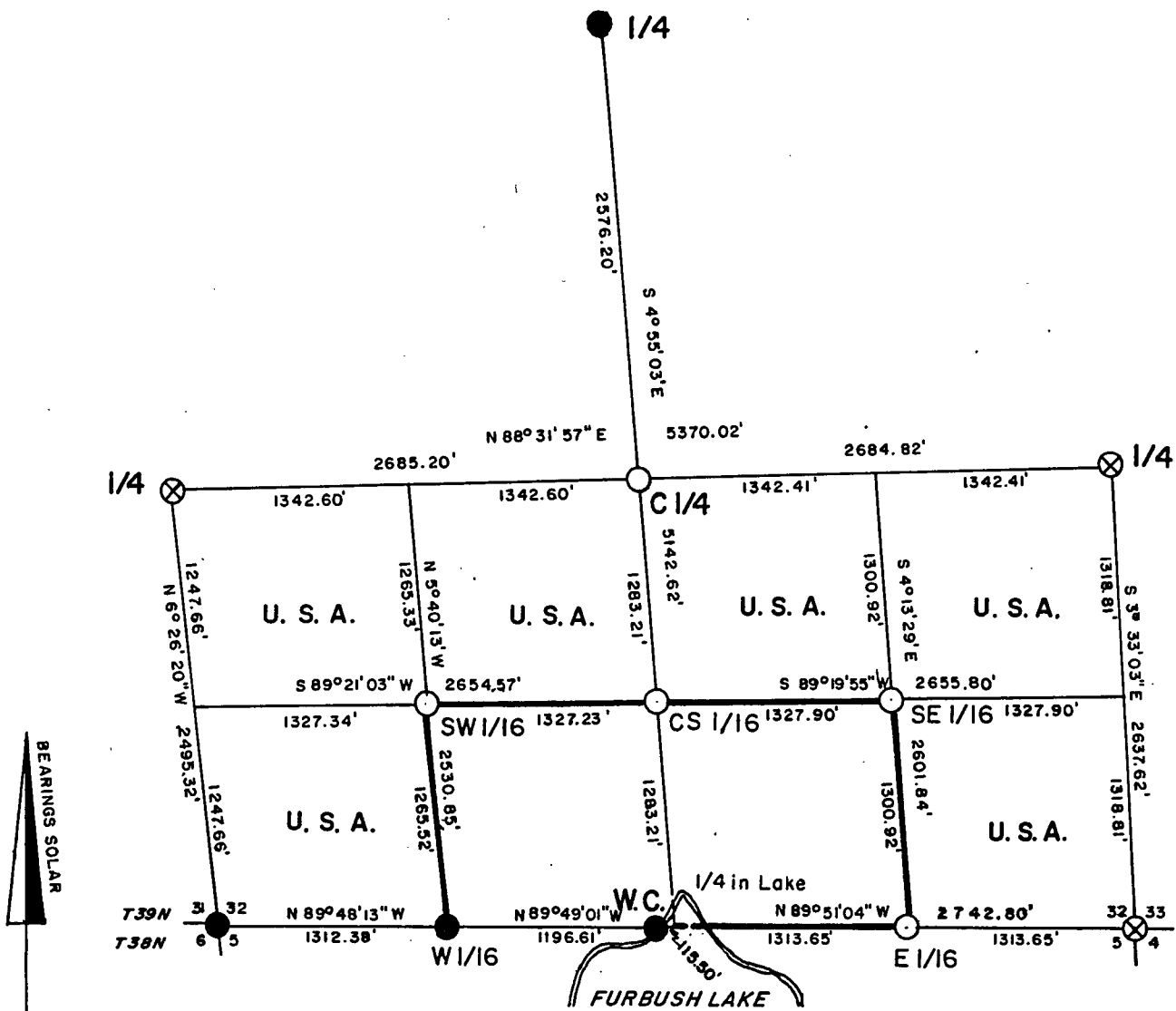
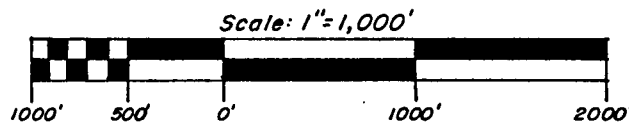


Stock No. 26273

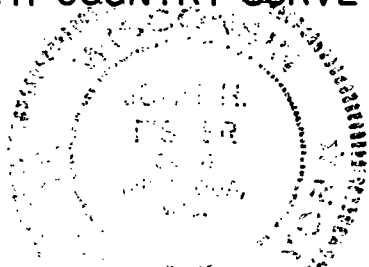
FOREST CO SURVEYOR  
FILE # 391232-19850318  
DATE \_\_\_\_\_ BY \_\_\_\_\_

# PLAT OF SURVEY U. S. GOVERNMENT LAND

Section 32  
Township 39 North, Range 12 East, Fourth Principal Meridian  
County of Forest, State of Wisconsin



NORTH COUNTRY SURVEYORS



*John H. Fisher*  
John H. Fisher R.L.S. S-836

Dated: March 18, 1985

### LEGEND

- = 2" iron pipe with brass tablet found in place.
- ⊗ = 6" diameter concrete monument with brass tablet found in place.
- = Corner position marked by a 2" aluminum pipe with a 3" aluminum tablet set this survey.
- = Boundary of U. S. Government Land.

Stock No. 26273

SURVEY NOTES

This survey was made by North Country Surveyors pursuant to United States Department of Agriculture, Forest Service Contract "No. 53-56A6-4-00035, Cadastral Survey" for the purpose of recovering, restoring, establishing, marking and perpetuating the corners and boundary lines of the U.S. Government land on the perimeter and within Section 32, T39N, R12E, Fourth Principal Meridian, Forest County, Wisconsin as shown on the plat herewith.

The original Government Survey of the Township lines was completed by Alfred Millard in 1858. The subdivision of the Township was surveyed by William E. Daugherty in 1859.

Two Dependent Resurveys have been made in the Township which control the location of various corners. These surveys, both conducted by the Bureau of Land Management Surveyor, were conducted in 1937 and 1941. The records of both surveys have been used in this survey.

Bearings between corner positions are true bearings by reference to a solar observation. All distances shown thereon are in feet and hundredths of feet. The control traverse was measured by use of electronic distance measuring equipment. Corners recovered, restored and established by this survey are marked by the monument described in the map legend. Each monumented corner position is referenced to blazed and scribed bearing trees and described reference objects.

CORNERS RECOVERED

## 1. Corner to Sections 31-32-5-6

Corner is monumented by a Forest Service 2" iron pipe with a brass cap as restored by Jean F. Resvick in 1979 and based on the 1937 B.L.M. resurvey.

## Corner References:

Nail in Sugar Maple	25"	S87°E	92.1 feet
Nail in Sugar Maple	26"	S52°W	56.2 feet
Nail in Sugar Maple	16"	N68°W	132.5 feet
Nail in Spruce	14"	N69°E	125.7 feet

Corner falls in ski trail so no post was set.

Stock No. 26273

## 2. Quarter Corner to Sections 31-32

Corner is monumented by a 6" diameter concrete monument with a brass tablet as established by the General Land Office in 1941.

## Corner References:

Nail in Red Pine	9"	S63°W	38.5 feet
Nail in Maple	9"	N28°E	22.0 feet
Nail in Red Pine	8"	S27°W	38.1 feet
Nail in Spruce	8"	S80°E	11.7 feet
Wood Post		S30°E	1.4 feet

## 3. Quarter Corner to Sections 29-32

Corner is monumented by a 2" iron pipe with a United States General Land Office brass cap set in 1941.

## Corner References:

Nail in Red Pine	15"	N76°W	44.3 feet
Nail in Red Pine	12"	N17°E	48.3 feet
Nail in Red Pine	14"	S74°W	21.3 feet
Nail in Red Pine	13"	S14°E	15.5 feet
Steel Post		N10°E	1.1 feet

## 4. Quarter Corner to Sections 32-33

Corner is monumented by a 6" diameter concrete monument with a brass tablet as established by the General Land Office in 1941.

## Corner References:

Nail in Red Pine	14"	S29°E	40.0 feet
Nail in Red Pine	7"	S31°W	23.5 feet
Nail in White Pine	7"	N43°W	41.5 feet
Nail in Sugar Maple	8"	N13°E	25.7 feet
Wood Post		S20°W	1.2 feet

Stock No. 26273

## 5. Corner to Sections 32-33-4-5

Corner is monumented by a 6" diameter concrete monument with a brass tablet as established by the General Land Office in 1937.

## Corner References:

Nail in White Spruce	20"	N41°E	216.0 feet
Nail in White Spruce	10"	N6°E	172.5 feet
Nail in Red Pine	12"	N21°W	211.5 feet
Nail in Tamarack	10"	N52°W	153.0 feet
Wood Post		S60°W	1.1 feet

## 6. Witness Corner to Quarter Corner to Sections 32-5

Corner is monumented by a 2" iron pipe with a United States General Land Office brass cap set in 1937.

## Corner References:

Nail in Maple	9"	N38°E	107.1 feet
Nail in White Birch	12"	N46°W	74.3 feet
Nail in Maple	9"	N24°W	61.1 feet
Nail in Balsam	8"	S3°E	107.9 feet
Steel post		WEST	0.7 feet

## 7. West 1/16 Corner to Sections 32-5

Corner is monumented by a Forest Service 2" iron pipe with a brass cap as established by Jean F. Resvick in 1979.

## Corner References:

Nail in Maple	7"	S13°W	28.3 feet
Nail in Maple	11"	N32°W	4.6 feet
Nail in Maple	6"	S73°E	28.6 feet
Steel post		NORTH	0.9 feet

Stock No. 26273

CORNERS ESTABLISHED

## 1. East 1/16 Corner to Sections 32-5

Corner is monumented by a 2" aluminum pipe 5' long with a 3" diameter aluminum tablet stamped to identify the corner. Corner is placed on line and at the mid point between the Corner to Sections 32-33-4-5 and the Quarter Corner to Sections 32-5 in Furbush Lake.

## Corner References:

Nail in Spruce	9"	N38°W	45.8 feet
Nail in Cedar	7"	S32°E	39.8 feet
Nail in Cedar	17"	N16°E	47.0 feet
Steel post		NORTH	0.7 feet

## 2. Southeast 1/16 Corner

Corner is monumented by a 2" aluminum pipe 3' long with a 3" diameter aluminum tablet stamped to identify the corner. Corner is set at the intersection of the lines connecting the 1/16 Corners on the exterior of the Southeast Quarter of Section 32.

## Corner References:

Nail in Red Pine	8"	S46°E	63.0 feet
Nail in White Birch	10"	N80°E	50.0 feet
Nail in Maple	6"	N10°E	51.7 feet
Steel post		WEST	0.8 feet

## 3. Center 1/4 Corner

Corner is monumented by a 2" aluminum pipe 3' long with a 3" diameter aluminum tablet stamped to identify the corner. Corner is placed at the intersection of the lines connecting the opposite Quarter Corners on the exterior of Section 32.

## Corner References:

Nail in Red Pine	6"	S44°E	19.9 feet
Nail in Red Pine	5"	S33°W	21.2 feet
Nail in Red Pine	7"	N1°E	44.1 feet
Steel Post		NORTH	0.9 feet

Stock No. 26273

## 4. Center-South 1/16 Corner

Corner is monumented by a 2" aluminum pipe 3' long with a 3" diameter aluminum tablet stamped to identify the corner. Corner is set on line and at the mid point between the Center 1/4 Corner and the Quarter Corner to Sections 32-5 in Furbush Lake.

## Corner References:

Nail in White Birch	9"	N8°E	29.8 feet
Nail in Ironwood	6"	N86°E	38.5 feet
Nail in Maple	6"	S39°W	10.4 feet
Steel Post		EAST	0.7 feet

## 5. Southwest 1/16 Corner

Corner is monumented by a 2" aluminum pipe 3' long with a 3" diameter aluminum tablet stamped to identify the corner. Corner is set at the intersection of the lines connecting the 1/16 Corners on the exterior of the Southwest Quarter of Section 32.

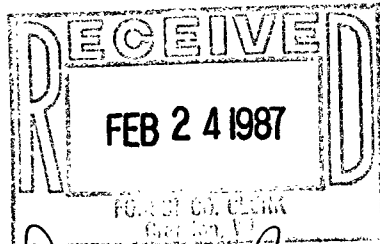
## Corner References:

Nail in Red Pine	9"	S7°E	23.2 feet
Nail in Red Pine	10"	S72°E	36.0 feet
Nail in Red Pine	11"	N39°E	95.9 feet
Steel Post		EAST	0.9 feet

SURVEYORS AFFIDAVIT

State of Wisconsin)  
County of Forest )ss

I, John H. Fisher, Land Surveyor, Registered in the State of Wisconsin, hereby certify: That I have surveyed and subdivided Section 32, T39N, R12E, Fourth Principal Meridian, County of Forest, State of Wisconsin, in accordance with the rules of the survey of the public lands and with the statutes of the State of Wisconsin. The plat map and survey notes are an accurate representation of the corners recovered and established.



*Dora C. James*  
Forest Co. Clerk

Date of Survey: January-March, 1985

*John H. Fisher*  
Registered Land Surveyor,  
State of Wisconsin

Certificate No. S-836

Plat ready for filing:

*Frank Hauberg*  
District Ranger

