

Stock No. 26273

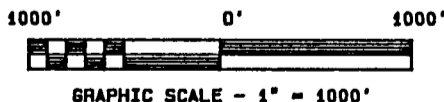
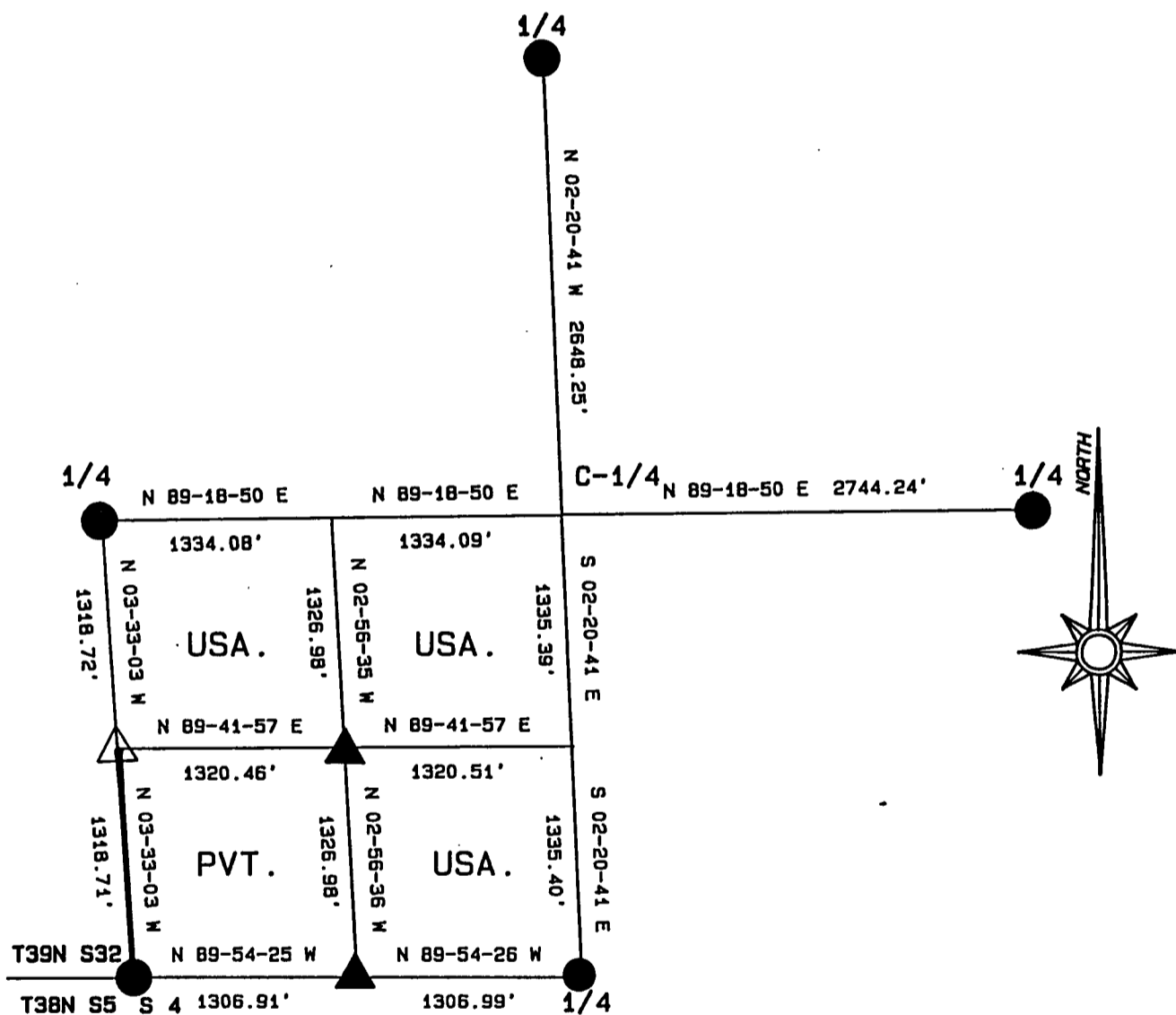
FOREST CO SURVEYOR
 FILE # 391233-1990000
 DATE _____ BY _____

PLAT OF SURVEY FOR CERTIFIED LAND CORNER
 RESTORATION AND ESTABLISHMENT





BEING THE CORNERS FOR THE SW 1/4 OF THE SW 1/4
 AND THE 1/4 CORNERS ON THE PERIMETER OF THE SECTION

SECTION 33, TOWNSHIP 39 NORTH, RANGE 12 EAST.

COUNTY OF FOREST, STATE OF WISCONSIN.



LEGEND

-  6 INCH DIAMETER CONCRETE MONUMENT FROM G.L.O. DEPENDENT RESURVEY
-  1 INCH DIAMETER ALUMINUM PIPE MONUMENT 36 INCHES LONG WITH AN ALUMINUM CAP.
-  1 INCH DIAMETER ALUMINUM PIPE MONUMENT 60 INCHES LONG WITH AN ALUMINUM CAP.
-  BOUNDARY LINE MARKED TO FOREST SERVICE STANDARD

Stock No. 26273

T39N R12E - SECTION 33

Page 2 of 4

SURVEY NOTES

This survey was made by the U.S. Department of Agriculture, Forest Service for the purpose of recovering, restoring, establishing, marking, and perpetuating the corners and boundary line of U.S. Government land on the perimeter and within Section 33, Township 39 North, Range 12 East, Fourth Principal Meridian, Forest County, State of Wisconsin as shown on the plat map herewith.

The Original Government Sub-division of this township was done in 1859 by William E. Daugherty. In 1937 the General Land Office made a Dependent Resurvey of the South township line and in 1941 the General Land Office made a Dependent Resurvey of the township sub-division.

The U.S. Government land within Section 33 was acquired in 1931, 1932 and 1985.

The bearings between corner positions are referenced to the East line of Section 32 as previously surveyed by John Fisher, RLS under contract with the U.S. Forest Service in 1985. No curvature corrections have been applied to the bearings in Section 33. The accuracy of this survey exceeds the State of Wisconsin requirement for closure of 1 part in 3000. Corners recovered or established by this survey are marked as described in the map legend. Each monumented corner is referenced to blazed, scribed, painted and tagged bearing trees. Tie bearings to the bearing trees are magnetic and are not corrected for declination.

The field notes and a copy of the plat of survey are on file in the Forest Service Supervisor's Office at Rhinelander, Wisconsin and the District Ranger's Office at Laona, Wisconsin.

CORNERS RECOVERED AND RESTORED1. North Quarter Corner

Corner position restored by proportionate measurement in 1941 by a General Land Office Dependent Resurvey.

1941 Corner References Recovered:

Maple	14"	S 37° E	29.70 feet
Maple	10"	N 35° W	20.13 feet

2. East Quarter Corner

Corner position restored from an original survey post point in 1941 by a General Land Office Dependent Resurvey. Jean Resvick, RLS with the U.S. Forest Service recovered this corner in 1972 and made new bearing trees.

1972 Corner References Recovered:

Spruce	5"	N 61° W	67.90 feet
Spruce (Down)	6"	S 64° W	83.40 feet

New Corner References:

No new bearing trees available.			
Steel Sign Post		South	1.00 feet

3. South Quarter Corner

Corner position restored from the remains of the original bearing trees in 1937 by a General Land Office Dependent Resurvey. Jean Resvick, RLS with the U.S. Forest Service recovered this corner in 1972.

1941 Corner References Recovered:

White Pine Stump		S 30° E	14.52 feet
Hemlock	12"	S 23° W	56.10 feet
Cedar	12"	N 22° W	44.88 feet
White Pine Stump		N 52° W	16.50 feet

Stock No. 26273

T39N R12E - SECTION 33

Page 3 of 4

4. Southwest Section Corner

Corner position was restored from the remains of the original bearing trees in 1937 by a General Land Office Dependent Resurvey. Corner was recovered and restored in 1985 by John Fisher, RLS under contract with the U.S. Forest Service. Corner documentation is recorded on a U.S Public Land Survey Monument Record filed in the Forest County Registrar of Deeds Office as Document No. 128457.

1985 Corner References Recovered:

Spruce	10"	N 6° E	172.50 feet
Spruce	20"	N 41° E	216.00 feet
Tamarack	10"	N 52° W	153.00 feet
Red Pine	12"	N 21° W	211.50 feet
4 x 4 Wood Post		Southwest	1.00 feet

5. West Quarter Corner

Corner position was restored at proportionate measurement in 1941 by a General Land Office Dependent Resurvey. The corner was recovered in 1968 by Jean Resvick, RLS with the U.S. Forest Service and recorded on a Certified Land Corner Restoration Certificate filed in the Forest County Registrar of Deeds Office as Document No. 94231. The corner was also recovered in 1985 by John Fisher, RLS under contract with the U.S Forest Service and recorded on a U.S Public Land Survey Monument Record filed in the Forest County Registrar of Deeds Office as Document No. 128454.

1941 Corner References Recovered:

Red Pine	16"	S 29° E	39.70 feet
Red Pine	12"	S 18° W	20.60 feet

1968 Corner References Recovered:

4 x 4 Wood Post		Southeast	1.00 feet
-----------------	--	-----------	-----------

1985 Corner References Recovered:

Maple	8"	N 13° E	25.70 feet
White Pine	7"	N 43° W	41.50 feet

CORNERS ESTABLISHED1. North Sixteenth Corner

Corner position established at midpoint and on line between the Southwest section corner and the West quarter corner in 1986 by James R. Grothman, RLS under contract with the U.S. Forest Service.

1986 Corner References:

Cherry	4"	N 61° E	17.45 feet
White Birch	10"	S 26° E	12.00 feet
Hemlock	6"	N 30° W	15.45 feet
Steel sign post		East	0.50 feet

2. Southwest Sixteenth Corner

Corner position established at the intersection of straight lines between opposing sixteenth corners on the perimeter of the Southwest quarter of section 33.

Corner References:

Spruce	24"	S 68° E	68.20 feet
No Other Bearing Trees Available			
Steel Sign Post		Northeast	0.75 feet

3. West Sixteenth Corner Between Sections 5 and 33

Corner position established at midpoint and on line between the South quarter corner and the Southwest section corner.

Corner References:

Cedar	7"	S 80° E	3.18 feet
Cedar	10"	S 9° W	3.76 feet
Steel Sign Post		Northwest	0.50 feet

Stock No. 26273

T39N R12E - SECTION 33

SURVEYOR'S AFFIDAVIT

State of Wisconsin)
)ss
County of Forest)

I, William B. Cochrane, Land Surveyor, U.S.D.A. Forest Service and a Registered Land Surveyor in the State of Wisconsin, hereby certify that I have surveyed and sub-divided Section 33, Township 39 North Range 12 East, Fourth Principal Meridian, Forest County, State of Wisconsin.

The plat map and survey notes herewith are a correct representation of the land surveyed and sub-divided. I have surveyed and sub-divided said section in accordance with the rules for the Survey of Public Lands and the Statutes of the State of Wisconsin.



William B. Cochrane
Land Surveyor, U.S.D.A. Forest Service
R.L.S. State of Wisconsin
Certificate S-1107

Date of Survey: 1990

Survey requested by: *Jan Gordon*
District Ranger

4/9/92
Date

