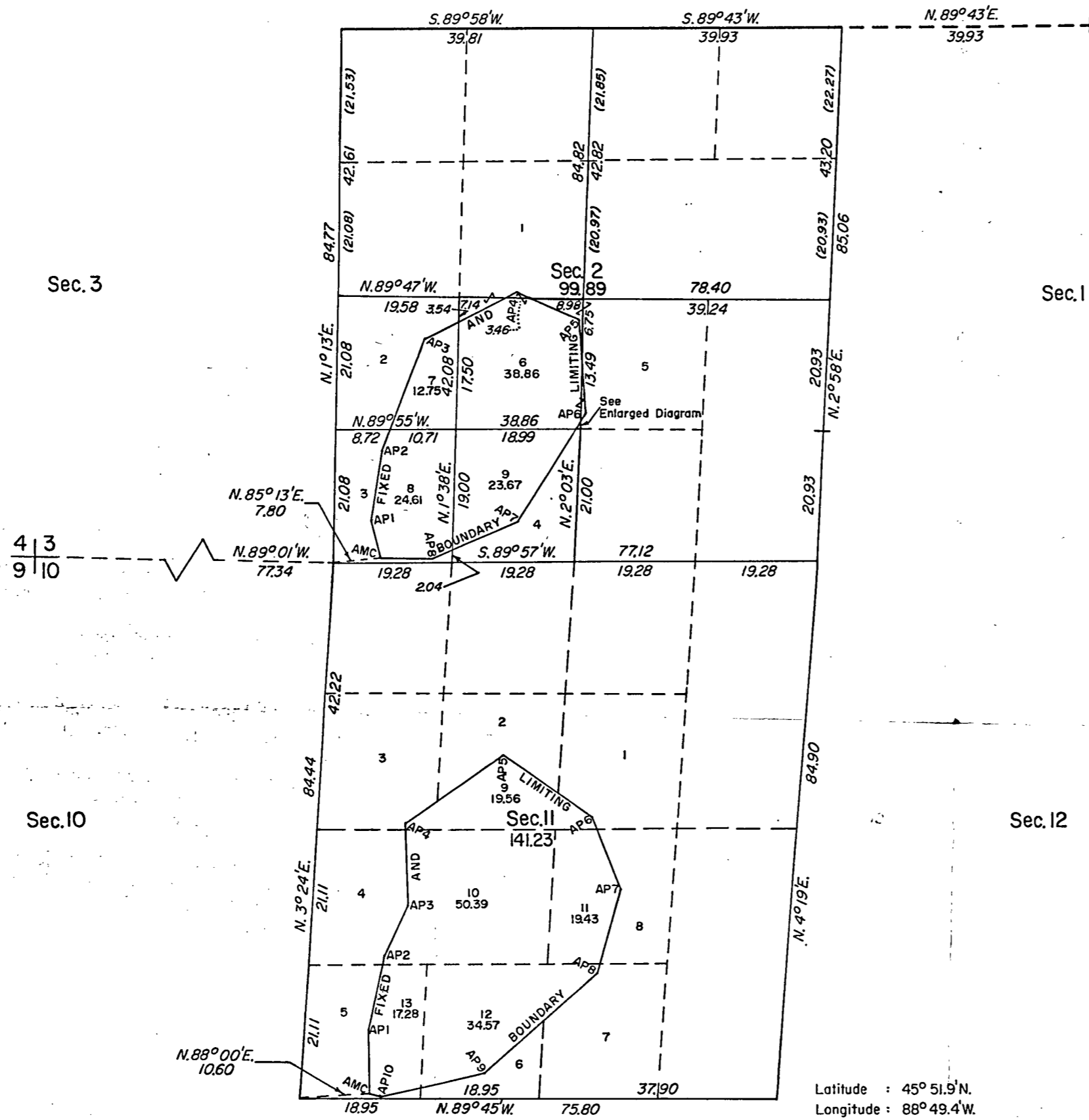
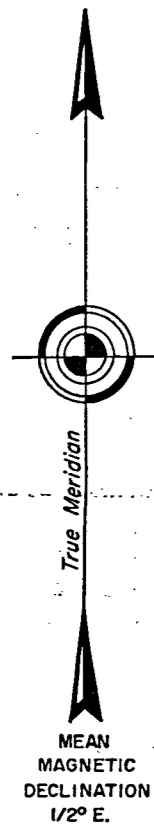
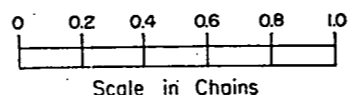
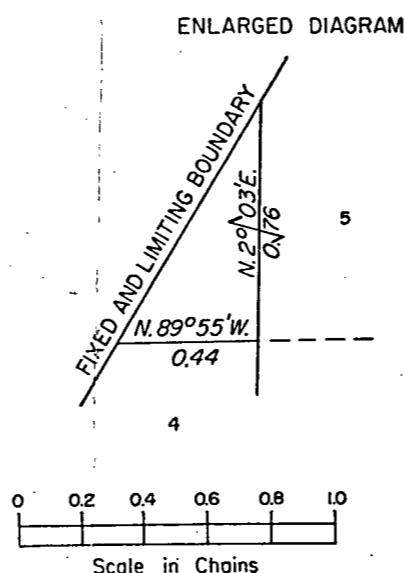
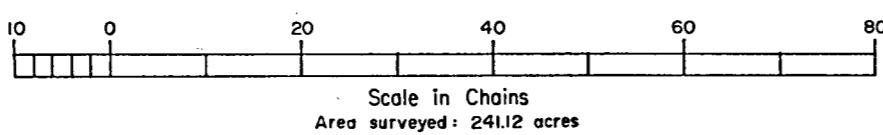


TOWNSHIP 39 NORTH, RANGE 13 EAST, OF THE FOURTH PRINCIPAL MERIDIAN, WISCONSIN.

DEPENDENT RESURVEY AND SURVEY OF OMITTED LANDS



Latitude : 45° 51.5' N.  
Longitude : 88° 49.4' W.



A history of surveys is contained in the field notes.

This plat represents the dependent resurvey of a portion of the north boundary, a portion of the subdivisional lines designed to restore the corners in their true original locations according to the best available evidence, and the reestablishment of the record meander lines to include lands omitted from the original survey in secs. 2 and 11, and a partial subdivision of sec. 2, T. 39 N., R. 13 E., Fourth Principal Meridian, Wisconsin.

Except as indicated hereon, the lottings and areas are as shown on the plat approved October 4, 1865.

The position of the original meander courses in secs. 2 and 11 are shown by irregular lines with numbered angle points. These lines, as originally surveyed, were grossly in error and now function as a fixed and limiting boundary. The directions and lengths of the several courses have been adjusted to the record of the original survey.

Survey executed by Gary L. Kratz and Michael J. Avery, Cadastral Surveyors, beginning May 17, 1978, and completed May 18, 1981, pursuant to Special Instructions dated May 20, 1969, for Group No. 89, Wisconsin.

UNITED STATES DEPARTMENT OF THE INTERIOR  
BUREAU OF LAND MANAGEMENT  
Denver, Colorado March 11, 1982

This plat is strictly conformable to the approved field notes, and the survey, having been correctly executed in accordance with the requirements of law and the regulations of this Bureau, is hereby accepted.

For the Director

*Gary S. Speight*

Acting Chief, Cadastral Survey  
Examination and Approval Staff

FOREST CO SURVEYOR  
FILE # 391202-19820311  
DATE \_\_\_\_\_ BY \_\_\_\_\_