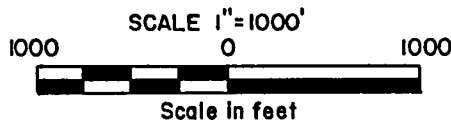
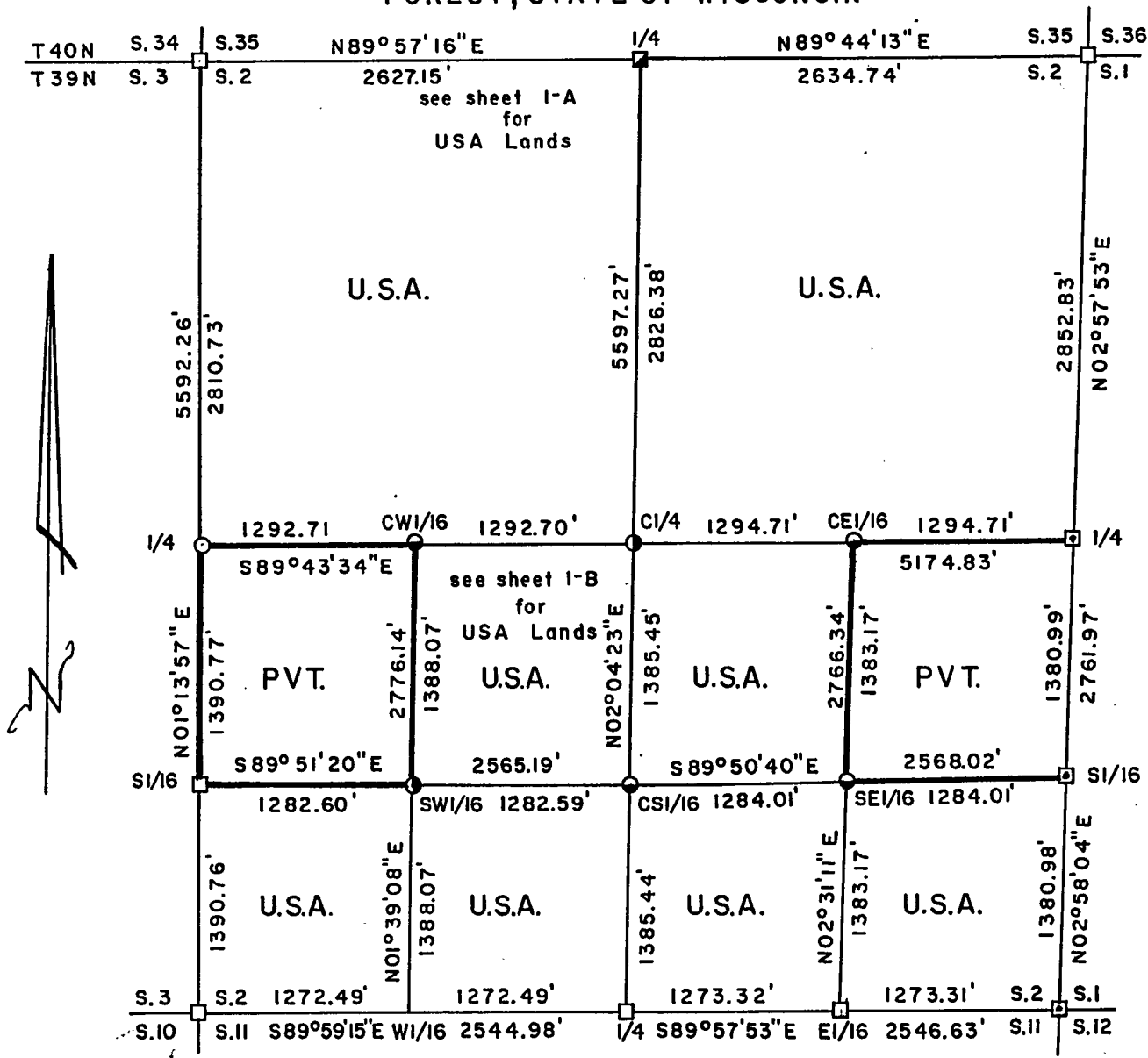


Stock No. 26273

PLAT OF SURVEY FOR CERTIFIED LAND CORNER RESTORATION AND ESTABLISHMENT
 BEING THE CORNERS FOR THE NE 1/4, NW 1/4, S 1/2 - SE 1/4, NW 1/4 - SE 1/4, E 1/2 - SW 1/4 AND SW 1/4 - SW 1/4 OF SECTION 2 T. 39 N. R. 13 E., FOURTH PRINCIPAL MERIDIAN, COUNTY OF FOREST, STATE OF WISCONSIN

Sheet 1 of 7



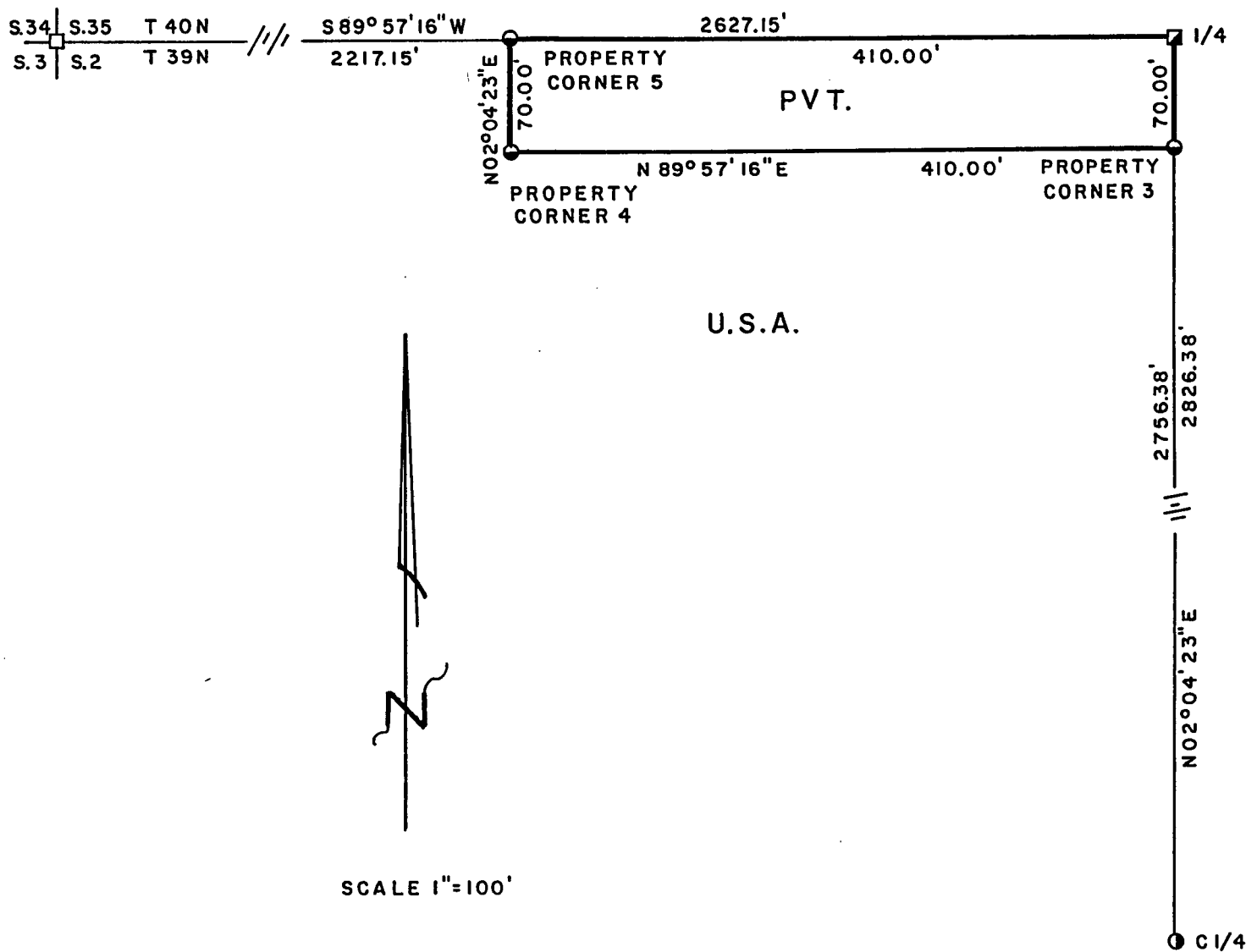
LEGEND

- BLM Copperweld Monument
- 2 1/2 inch diameter aluminum pipe monument 30 inches long with an aluminum cap
- ◻ 2 inch I.D. iron pipe monument with a brass cap
- 2 1/2 inch diameter aluminum pipe monument 36 inches long with an aluminum cap
- 1 inch diameter aluminum pipe monument 36 inches long with an aluminum cap
- 1 inch diameter aluminum pipe monument 60 inches long with an aluminum cap
- Boundary line marked to Forest Service standards

Note: Bearings are true bearings as referenced to a solar observation taken at the intersection of State Highway 55 and Jones Creek located near the Southwest corner of Section 13.

FOREST CO SURVEYOR
 FILE # 391362-19930903
 DATE _____ BY _____

DETAILED SURVEY MAP

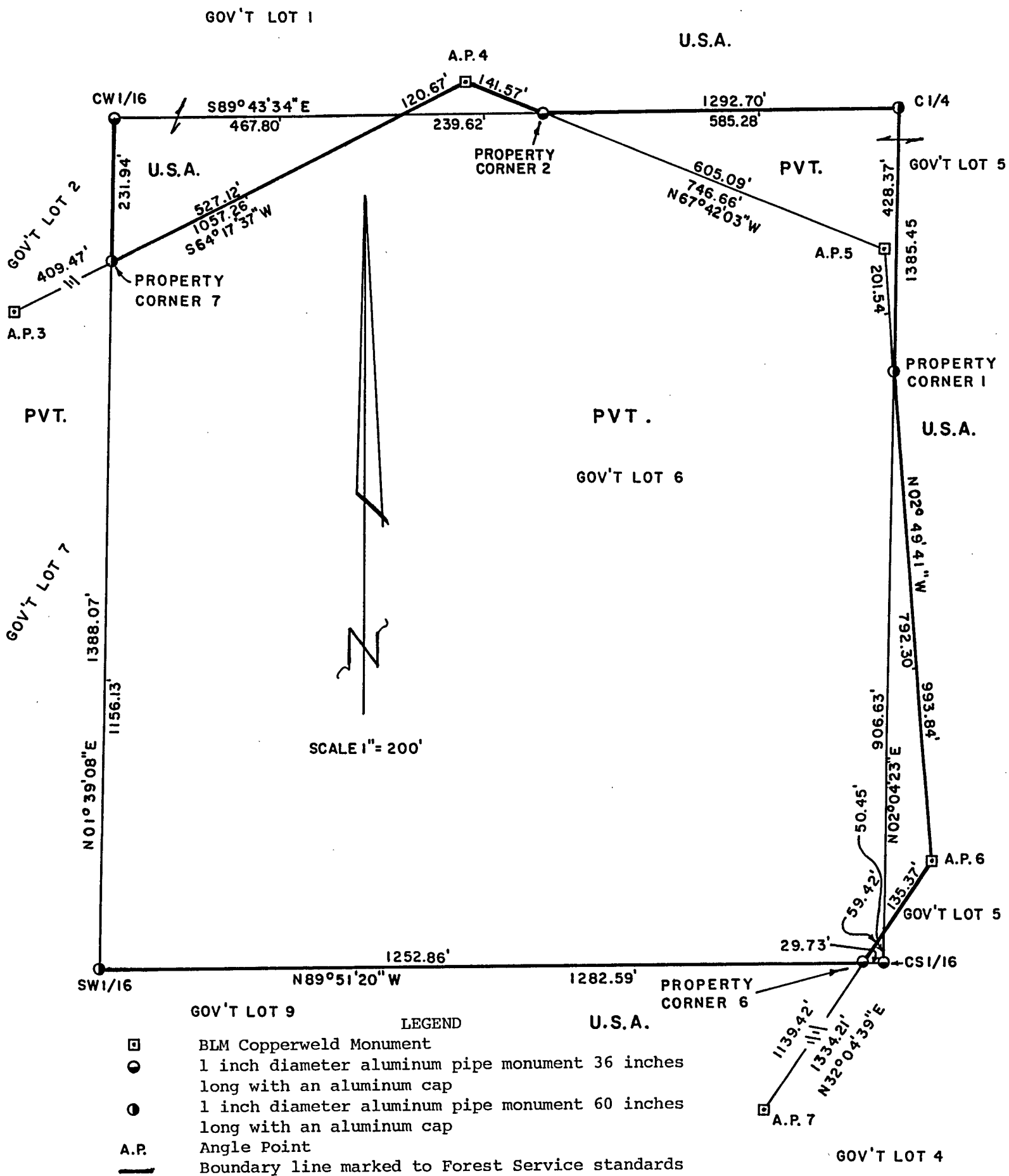


LEGEND

- 2½ inch diameter aluminum pipe monument 30 inches long with an aluminum cap
- 1 inch diameter aluminum pipe monument 36 inches long with an aluminum cap
- 2 inch I.D. iron pipe monument with a brass cap
- 1 inch diameter aluminum pipe monument 60 inches long with an aluminum cap
- Boundary line marked to Forest Service Standards

Note: Bearings are true bearings as referenced to a solar observation taken at the intersection of State Highway 55 and Jones Creek located near the Southwest corner of Section 13.

DETAILED SURVEY MAP



- LEGEND
- BLM Copperweld Monument
 - 1 inch diameter aluminum pipe monument 36 inches long with an aluminum cap
 - 1 inch diameter aluminum pipe monument 60 inches long with an aluminum cap
 - A.P. Angle Point
 - Boundary line marked to Forest Service standards

Stock No. 26273

Sheet 2 of 7

SURVEY NOTES

This survey was made by Gary L. Pisoni, a Registered Land Surveyor in the State of Wisconsin, for the U.S.D.A., Forest Service, for the purpose of recovering, restoring, establishing, marking, and perpetuating the corners and boundary lines of U.S. Government Land on the perimeter and within Section 2, Township 39 North, Range 13 East, Fourth Principal Meridian, Forest County, State of Wisconsin, as shown on the plat map herewith.

The Original Government Sub-division of this township was done in 1865 by William E. Daugherty and Alex McGill. The North township line was done in 1858 by Alfred Millard. Dependent resurvey was done in 1978-1981 by Gary L. Kratz and Michael J. Avery.

The bearings between corner positions are true bearings referenced to a solar observation which was taken at the intersection of State Highway 55 and Jones Creek located near the Southwest corner of Section 13. All distances shown thereon are in feet and hundredths of feet. The control traverse was measured by use of electronic distance measuring equipment.

The accuracy of this survey exceeds the State requirements of 1 in 3000.

The field notes and a copy of the Plat of Survey are on file in the Forest Supervisor's Office at Rhinelander, Wisconsin.

CORNERS RECOVERED AND RESTORED1. Northwest Section Corner

Corner position restored from a Dependent resurvey in 1978-1981 by Gary L. Kratz and Michael J. Avery from acceptance of a 2 1/2" diameter iron pipe which is locally accepted as the corner position.

1978 Corner References Recovered:

Basswood	14"	N 81°E	18.80 feet
Basswood	13"	S 25°E	23.72 feet
Basswood	13"	S 45°W	48.85 feet
Sugar Maple	12"	N 71°W	42.81 feet
Steel sign post		S 26°W	1.0 feet

2. North Quarter Corner

In 1964, Jean Resvick RLS U.S.F.S. found the original bearing tree stumps and set a 2 inch diameter iron pipe with brass cap.

1964 Corner References Recovered:

Tamarack	9"	S 18°E	14.26 feet
Tamarack	10"	N 45°E	28.90 feet
Wood sign post		N 78°E	0.70 feet

New Corner References:

Tamarack	7"	S 60°W	24.28 feet
Steel sign post		N 17°W	0.70 feet

3. Northeast Section Corner

Corner position restored from a Dependent resurvey in 1978-1981 by Gary L. Kratz and Michael J. Avery.

1978 Corner References Recovered:

Sugar Maple	13"	S 58°W	53.24 feet
Sugar Maple	8"	N 65°W	70.58 feet

New Corner References:

Sugar Maple	7"	N 52°E	35.82 feet
Sugar Maple	6"	S 56°E	39.92 feet

4. East Quarter Corner

Corner position restored from a Dependent resurvey in 1978-1981 by Gary L. Kratz and Michael J. Avery.

1978 Corner Reference:

Sugar Maple	13"	N 87°E	27.51 feet
-------------	-----	--------	------------

New Corner References:

Sugar Maple	9"	N 33°E	73.91 feet
Sugar Maple	8"	S 77°W	42.84 feet
Sugar Maple	9"	N 47°W	67.56 feet

5. South Sixteenth Corner Between Sections 1 and 2

Corner position was established from a Dependent resurvey in 1978-1981 by Gary L. Kratz and Michael J. Avery.

1978 Corner Reference:

Sugar Maple	12"	S 67°W	60.26 feet
-------------	-----	--------	------------

New Corner References:

Sugar Maple	9"	S 63°E	61.69 feet
Steel sign post		East	26.25 feet

6. Southeast Section Corner

Corner position restored from a Dependent resurvey in 1978-1981 by Gary L. Kratz and Michael J. Avery. Corner position determined at the intersection of State Highway 55 and Zepp Road extending East.

1978 Corner References:

White Spruce	10"	N 46°E	40.92 feet
Cedar	10"	S 61°E	114.18 feet
Cedar	10"	S 54°W	66.66 feet
Maple	5"	N 73°W	36.30 feet

1990 Corner References:

White Spruce	11"	N 42°E	41.21 feet
Cedar	11"	S 60°E	114.08 feet
Cedar	10"	S 47°W	66.21 feet
Red Maple	5"	N 73°W	36.54 feet

7. East Sixteenth Corner Between Sections 2 and 11

Corner position at midpoint and on line between the South quarter corner and the Southeast Section corner. Corner established from a Dependent Resurvey in 1978-1981 by Gary L. Kratz and Michael J. Avery.

1978 Corner References:

Sugar Maple	10"	S 32°W	21.12 feet
Balsam	5"	N 08°W	20.46 feet

8. South Quarter Corner

Corner position restored from a Dependent resurvey in 1978-1981 by Gary L. Kratz and Michael J. Avery at proportionate distance and no remaining evidence of the original corner.

1978 Corner References:

Cedar	8"	S 59°E	47.52 feet
Sugar Maple	6"	N 45°W	33.66 feet

Corner References Recovered and Set:

Cedar	8"	S 59°E	47.52 feet
Sugar Maple	8"	N 45°W	33.85 feet
Black Spruce	6"	S 12°E	19.02 feet
Steel sign post		N 80°E	1.2 feet

Stock No. 26273

Sheet 4 of 7

9. Southwest Section Corner

Corner position restored from a Dependent resurvey in 1978-1981 by Gary L. Kratz and Michael J. Avery at proportionate distance and no remaining evidence of the original corner.

1978 Corner Reference Recovered:

Red Maple	16"	S 84°W	36.53 feet
-----------	-----	--------	------------

New Corner References:

Popple	7"	N 86°E	29.41 feet
Popple	7"	N 51°W	8.08 feet
Steel sign post		South	0.75 feet

10. South Sixteenth Corner Between Sections 2 and 3

Corner position was established from a Dependent resurvey in 1978-1981 by Gary L. Kratz and Michael J. Avery at midpoint and on line between the West quarter corner and the Southwest Section corner.

1978 Corner Reference Recovered:

Black Spruce	8"	S 35°W	25.26 feet
--------------	----	--------	------------

New Corner References:

Black Spruce	7"	N 65°W	9.73 feet
Steel sign post		East	0.70 feet

11. West Quarter Corner

Corner position restored by single proportionate measurement and on line between the Northwest and Southwest Section corners of Section 2.

Corner References:

Balsam	7"	N 18°W	14.45 feet
Balsam	7"	S 49°E	15.09 feet
Balsam	4"	S 24°W	14.07 feet
White Spruce	13"	N 88°W	4.19 feet
Erroneous BLM Monument		S 65°14'20"E	31.40 feet
Steel sign post		N 49°E	0.83 feet

12. Center West Sixteenth Corner

Corner position was established from a Dependent resurvey in 1978-1981 by Gary L. Kratz and Michael J. Avery at midpoint and on line between the West quarter corner and the Center quarter corner.

Corner References:

Black Cherry	8"	N 78°E	42.98 feet
Black Cherry	7"	S 41°E	36.38 feet
Erroneous BLM Monument		N 56°21'25"E	3.38 feet
Steel sign post		North	0.75 feet

13. Center Quarter Corner

Corner position was established from a Dependent resurvey in 1978-1981 by Gary L. Kratz and Michael J. Avery at the intersection of the straight lines between opposing quarter corner positions on the perimeter of Section 2.

Corner References:

Cedar	10"	N 12°E	13.63 feet
Cedar	11"	S 06°E	23.14 feet
Erroneous BLM Monument		N 59°46'53"E	4.30 feet
Steel sign post		East	0.60 feet

14. Center South Sixteenth Corner

Corner position was established from a Dependent resurvey in 1978-1981 by Gary L. Kratz and Michael J. Avery at midpoint and on line between the South quarter corner and the Center quarter corner.

Corner References:

Sugar Maple	12"	N 69°E	38.28 feet
Red Maple	8"	N 76°W	44.24 feet
Erroneous BLM Monument		N 22°32'35"E	2.87 feet
Steel sign post		South	0.85 feet

Stock No. 26273

Sheet 5 of 7

15. Angle Point No. 3

Corner position was established from a Dependent resurvey in 1978-1981 by Gary L. Kratz and Michael J. Avery.

1981 Corner Reference Recovered:

Black Cherry	14"	S 39°W	31.30 feet
--------------	-----	--------	------------

New Corner References:

Black Cherry	14"	S 04°E	44.53 feet
Steel sign post		S 70°E	0.55 feet

16. Angle Point No. 4

Corner position was established from a Dependent resurvey in 1978-1981 by Gary L. Kratz and Michael J. Avery.

Corner References:

Steel sign post		North	0.85 feet
Steel sign post		S 67°E	1.18 feet

17. Angle Point No. 5

Corner position was established from a Dependent resurvey in 1978-1981 by Gary L. Kratz and Michael J. Avery.

1981 Corner Reference Recovered:

Cedar	16"	S 53°W	8.65 feet
-------	-----	--------	-----------

New Corner References:

Black Spruce	6"	N 68°E	5.97 feet
Steel sign post		South	0.75 feet

18. Angle Point No. 6

Corner position was established from a Dependent resurvey in 1978-1981 by Gary L. Kratz and Michael J. Avery.

1981 Corner References Recovered:

Cedar	9"	N 41°E	15.79 feet
White Birch	13"	S 75°E	10.79 feet

New Corner Reference:

Steel sign post		S 20°E	0.5 feet
-----------------	--	--------	----------

19. Angle Point No. 7

Corner position was established from a Dependent resurvey in 1978-1981 by Gary L. Kratz and Michael J. Avery.

1981 Corner References Recovered:

Red Maple	10"	S 75°W	5.05 feet
Sugar Maple	14"	N 58°E	27.72 feet

New Corner References:

Sugar Maple	6"	N 15°W	10.34 feet
Steel sign post		N 69°W	0.70 feet

20. Property Corner No. 2

Corner position was established from a Dependent resurvey in 1978-1981 by Gary L. Kratz and Michael J. Avery.

Corner References:

Black Spruce	6"	N 77°E	3.36 feet
Black Spruce	9"	N 89°W	9.03 feet
Erroneous BLM monument		N 67°34'06"W	7.26 feet
Steel sign post		S 17°E	0.65 feet

CORNERS ESTABLISHED1. Center East Sixteenth Corner

Corner position established at midpoint and on line between the East quarter corner and the Center quarter corner.

Corner References:

Sugar Maple	8"	S 63°E	16.34 feet
Sugar Maple	8"	N 26°E	16.74 feet
Steel sign post		West	0.46 feet

Stock No. 26273

Page 6 of 7

2. Southeast Sixteenth Corner

Corner position established at the intersection of the straight lines between opposing sixteenth corner positions on the perimeter of the Southeast quarter of Section 2.

Corner References:

Sugar Maple	16"	S 26°W	16.04 feet
Sugar Maple	8"	N 86°W	18.08 feet
Steel sign post		North	0.40 feet

3. Southwest Sixteenth Corner

Corner position established at the intersection of the straight lines between opposing sixteenth corner positions on the perimeter of the Southwest quarter of Section 2.

Corner references:

Spruce	11"	S 50°E	65.41 feet
Tamarack	11"	S 01°W	64.47 feet
Steel sign post		S 13°E	0.70 feet

4. Property Corner No. 1

Corner position established at the intersection of the North/South one-quarter line and between Angle Point No. 5 and Angle Point No. 6

Corner References:

Black Spruce	4"	N 88°E	15.08 feet
Black Spruce	3"	S 06°E	11.56 feet
Steel sign post		S 40°W	0.75 feet

5. Property Corner No. 3

Corner position established on line between the North quarter corner and the Center quarter corner and 70 feet South of the North quarter corner.

Corner References:

Tamarack	9"	N 27°E	16.53 feet
Black Spruce	6"	S 38°W	14.50 feet
Steel sign post		West	1.50 feet

6. Property Corner No. 4

Corner position established 410 feet West along the North boundary line of Section 2 from the North quarter corner and 70 feet South and parallel with the North/South one-quarter line.

Corner References:

White Spruce	16"	S 28°W	61.23 feet
White Spruce	17"	S 64°W	41.14 feet
Steel sign post		East	0.48 feet

7. Property Corner No. 5

Corner position established 410 feet West along the North boundary line of Section 2 from the North quarter corner.

Corner References:

White Spruce	20"	N 65°E	25.75 feet
White Spruce	16"	N 31°W	12.58 feet
Steel sign post		South	0.55 feet

8. Property Corner No. 6

Corner position established at the intersection of the South boundary line of Gov't Lot 6 and between Angle Point No. 6 and Angle Point No. 7.

Corner References:

Red Maple	13"	S 78°W	25.80 feet
Red Maple (dbl)	7"	N 07°30'E	34.18 feet
Steel sign post		S 50°W	0.90 feet

Stock No. 26273

Sheet 7 of 7

9. Property Corner No. 7

Corner position established at the intersection of the West boundary line of Gov't Lot 6 and between Angle Point No. 3 and Angle Point No. 4.

Corner References:

Steel sign post	North	0.91 feet
Steel sign post	S 64°W	0.88 feet

SURVEYOR'S CERTIFICATE

State of Wisconsin)ss
County of Forest)

I, Gary L. Pisoni, a Cadastral Surveyor, and a Registered Land Surveyor in the State of Wisconsin, hereby certify that I have surveyed and sub-divided Section 2, Township 39 North, Range 13 East, Fourth Principal Meridian, State of Wisconsin.

The plat map and survey notes herewith are a correct representation of the land surveyed and divided. I have surveyed and sub-divided said section in accordance with the rules for the survey of public lands and with the statutes of the State of Wisconsin.

Date of Survey: 1990-91, 1993

Gary L. Pisoni
Cadastral Surveyor
R.L.S. State of Wisconsin
Certificate S-1634

Survey requested by:

Camille Gardner
District Ranger

9/3/93
Date

