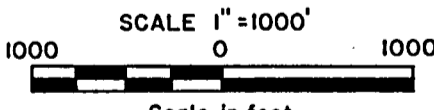
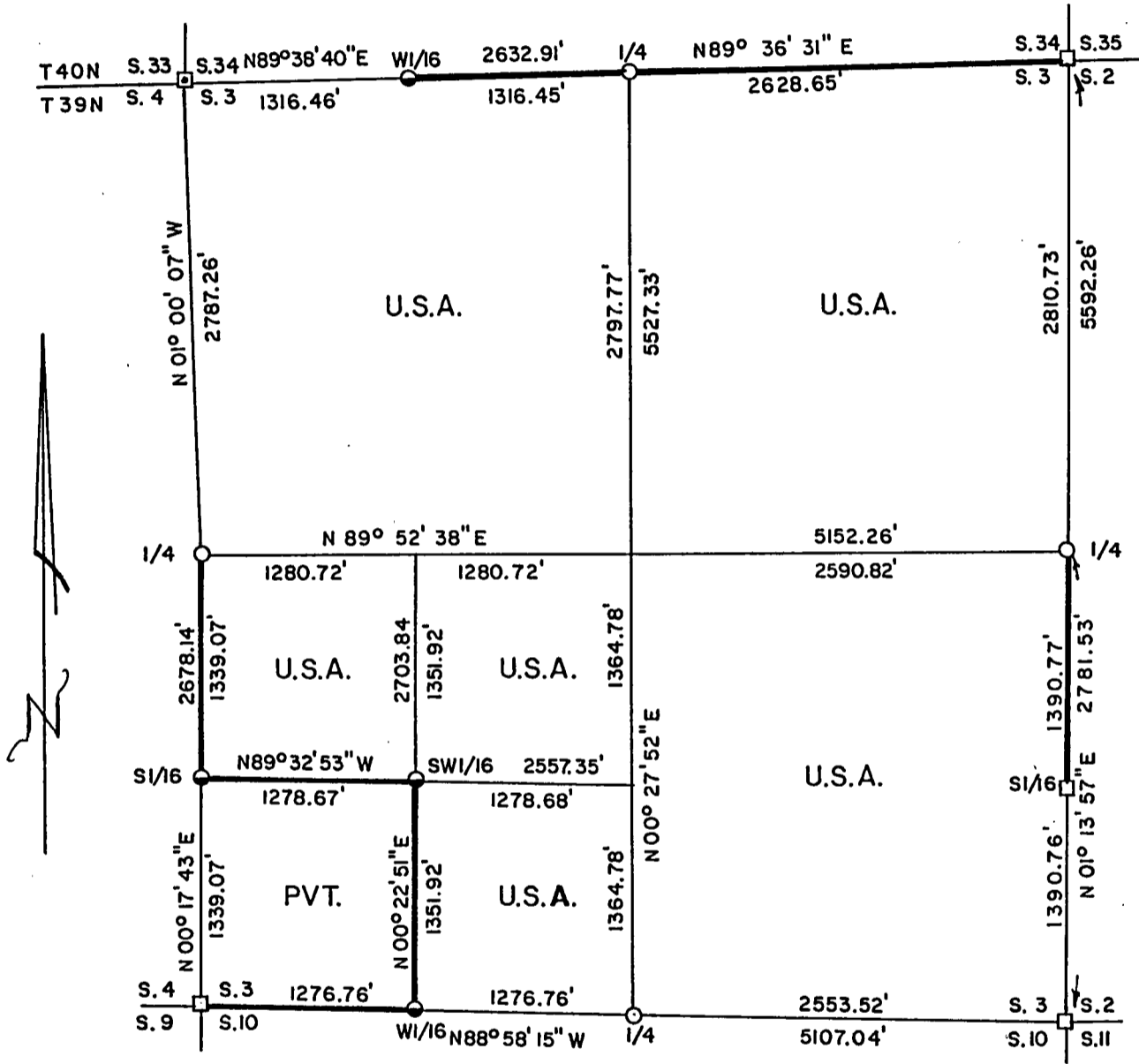


PLAT OF SURVEY FOR CERTIFIED LAND CORNER RESTORATION AND ESTABLISHMENT

BEING THE CORNERS FOR THE NE 1/4, SE 1/4, E 1/2 - SW 1/4, NW 1/4-SW 1/4 AND NW 1/4 OF SECTION 3, T. 39N. R. 13E., FOURTH PRINCIPAL MERIDIAN COUNTY OF FOREST, STATE OF WISCONSIN



Scale in feet
LEGEND

- 2 inch I.D. iron pipe monument with a brass cap
 - 1 inch diameter aluminum pipe monument 36 inches long with an aluminum cap
 - 2½ inch diameter aluminum pipe monument 36 inches long with an aluminum cap
 - 2½ inch diameter aluminum pipe monument 30 inches long with an aluminum cap
 - Boundary line marked to Forest Service standards
- Note: Bearings are true bearings as referenced to a solar observation taken at the intersection of State Highway 55 and Jones Creek located near the Southwest corner of Section 13.

FOREST CO SURVEYOR
 FILE # 391303-19921217
 DATE _____ BY _____

Stock No. 26273

Sheet 2 of 5

SURVEY NOTES

This survey was made by Gary L. Pisoni, a Registered Land Surveyor in the State of Wisconsin, for the U.S.D.A., Forest Service, for the purpose of recovering, restoring, establishing, marking, and perpetuating the corners and boundary lines of U.S. Government Land on the perimeter and within Section 3, Township 39 North, Range 13 East, Fourth Principal Meridian, Forest County, State of Wisconsin, as shown on the plat map herewith.

The Original Government Sub-division of this township was done in 1865 by William E. Daugherty and Alex McDill. The North township line was done in 1858 by Alfred Millard. Dependent resurvey was done in 1978 by Gary L. Kratz and Michael J. Avery.

The bearings between corner positions are true bearings referenced to a solar observation which was taken at the intersection of State Highway 55 and Jones Creek located near the Southwest corner of Section 13. All distances shown thereon are in feet and hundredths of feet. The control traverse was measured by use of electronic distance measuring equipment.

The accuracy of this survey exceeds the State requirements of 1 in 3000.

The field notes and a copy of the Plat of Survey are on file in the Forest Supervisor's Office at Rhinelander, Wisconsin.

CORNERS RECOVERED AND RESTORED1. Northwest Section Corner

In 1977, Jean Resvick RLS U.S.F.S. found a post point and the original bearing trees.

1977 Corner References:

Cedar	7"	N 47°E	6.63 feet
Cedar	7"	S 66°E	6.70 feet
Cedar	12"	S 52°W	13.64 feet
Cedar	7"	N 61°W	17.70 feet
Steel sign post		Northwest	0.50 feet

2. North Quarter Corner

Corner position restored from acceptance of a wood post lying on ground marking corner position.

Corner References:

Spruce	16"	N 84°E	21.96 feet
Ash	4"	S 58°E	19.50 feet
Spruce	9"	West	21.93 feet
Steel sign post		N 32°E	1.20 feet

3. Northeast Section Corner

Corner position restored from a Dependent resurvey in 1978 by Gary L. Kratz and Michael J. Avery from acceptance of a 2 1/2" diameter iron pipe which is locally accepted as the corner position.

1978 Corner References Recovered:

Basswood	14"	N 81°E	18.80 feet
Basswood	13"	S 25°E	23.72 feet
Basswood	13"	S 45°W	48.85 feet
Sugar Maple	12"	N 71°W	42.81 feet
Steel sign post		S 26°W	1.0 feet

4. East Quarter Corner

Corner position restored by single proportionate measurement and on line between the Northeast and Southeast Section corners of Section 3.

Corner References:

Balsam	7"	N 18°W	14.45 feet
Balsam	7"	S 49°E	15.09 feet
Balsam	4"	S 24°W	14.07 feet
White Spruce	13"	N 88°W	4.19 feet
Erroneous BLM monument		S 65°14'20"E	31.40 feet
Steel sign post		N 49°E	0.83 feet

5. South Sixteenth Corner Between Sections 2 and 3

Corner position restored from a Dependent Resurvey in 1978 by Gary L. Kratz and Michael J. Avery at midpoint and on line between the East quarter corner and the Southeast Section corner.

1978 Corner Reference Recovered:

Black Spruce	8"	S 35°W	25.26 feet
--------------	----	--------	------------

New Corner References:

Black Spruce	7"	N 65°W	9.73 feet
Steel sign post		East	0.70 feet

6. Southeast Section Corner

Corner position restored from a Dependent Resurvey in 1978 by Gary L. Kratz and Michael J. Avery at proportionate distance and no remaining evidence of the original corner.

1978 Corner Reference Recovered:

Red Maple	16"	S 84°W	36.53 feet
-----------	-----	--------	------------

New Corner References:

Popple	7"	N 86°E	29.41 feet
Popple	7"	N 51°W	8.08 feet
Steel sign post		South	0.75 feet

7. South Quarter Corner

Corner position restored at proportionate distance and on line between the Southwest and Southeast Section corners of Section 3.

Corner References:

Red Maple	14"	N 36°E	33.15 feet
Red Maple	8"	S 02°W	22.38 feet
Red Maple	4"	S 65°W	17.92 feet
Red Maple	13"	N 25°W	28.68 feet
Steel sign post		East	0.55 feet

8. Southwest Section Corner

Corner position restored from a Dependent Resurvey in 1978 by Gary L. Kratz and Michael J. Avery. From the remains of the original hemlock bearing tree stump, set an aluminum monument.

1978 Corner Reference:

Aspen	13"	S 16°E	20.46 feet
-------	-----	--------	------------

1987 Corner References by William Cochrane RLS:

Aspen	10"	N 80°E	45.70 feet
Spruce	11"	S 84°W	23.29 feet
Aspen	8"	N 32°W	46.36 feet
Steel sign post		Southwest	3.70 feet

Stock No. 26273

Sheet 4 of 5

9. West Quarter Corner

Corner position restored from acceptance of a 1"x 48" iron pipe marking corner position.

Corner References:

Sugar Maple	4"	N 28°E	18.91 feet
Red Maple	9"	S 70°E	20.23 feet
Red Maple	11"	S 17°W	27.84 feet
Cedar	12"	S 84°W	37.48 feet
Steel sign post		N 70°E	0.85 feet

CORNERS ESTABLISHED1. West Sixteenth Corner Between Sections 34 and 3, T40N, T39N

Corner position established at midpoint and on line between the Northwest Section corner and the North quarter corner.

Corner References:

Sugar Maple	7"	N 72°E	39.90 feet
Sugar Maple	8"	N 10°W	32.57 feet
Steel sign post		S 20°W	0.71 feet

2. South Sixteenth Corner Between Sections 3 and 4

Corner position established at midpoint and on line between the West quarter corner and the Southwest Section corner.

Corner References:

Steel sign post		North	0.82 feet
Steel sign post		East	0.90 feet
Steel sign post		South	0.82 feet
Iron Pipe	1" dia.	S 25°E	10.33 feet

3. Southwest Sixteenth Corner

Corner position established at the intersection of the straight lines between opposing sixteenth corner positions on the perimeter of the Southwest quarter of Section 3.

Corner References:

Sugar Maple	12"	N 45°E	26.55 feet
Sugar Maple	8"	S 05°W	12.95 feet
Steel sign post		East	0.90 feet

4. West Sixteenth Corner Between Sections 3 and 10

Corner position established at midpoint and on line between the Southwest Section corner and the South quarter corner.

Corner References:

Red Maple	3"	S 23°W	16.08 feet
Spruce	7"	N 57°W	49.21 feet
Steel sign post		East	0.62 feet

Stock No. 26273

Sheet 5 of 5

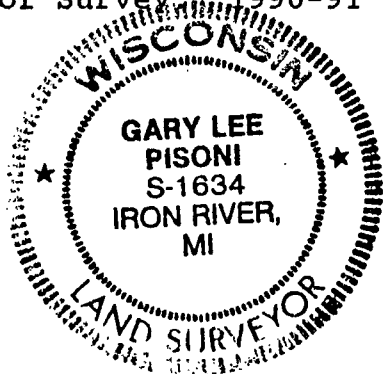
SURVEYOR'S CERTIFICATE

State of Wisconsin)ss
County of Forest)

I, Gary L. Pisoni, a Cadastral Surveyor, and a Registered Land Surveyor in the State of Wisconsin, hereby certify that I have surveyed and sub-divided Section 3, Township 39 North, Range 13 East, Fourth Principal Meridian, State of Wisconsin.

The plat map and survey notes herewith are a correct representation of the land surveyed and divided. I have surveyed and sub-divided said section in accordance with the rules for the survey of public lands and with the statutes of the State of Wisconsin.

Date of Survey: 1990-91



Gary L. Pisoni

Cadastral Surveyor
R.L.S. State of Wisconsin
Certificate S-1634

Survey requested by: *Tom Gardi* 12/17/92
District Ranger Date

