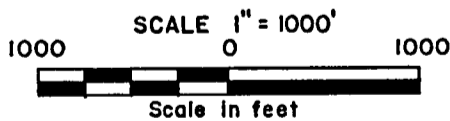
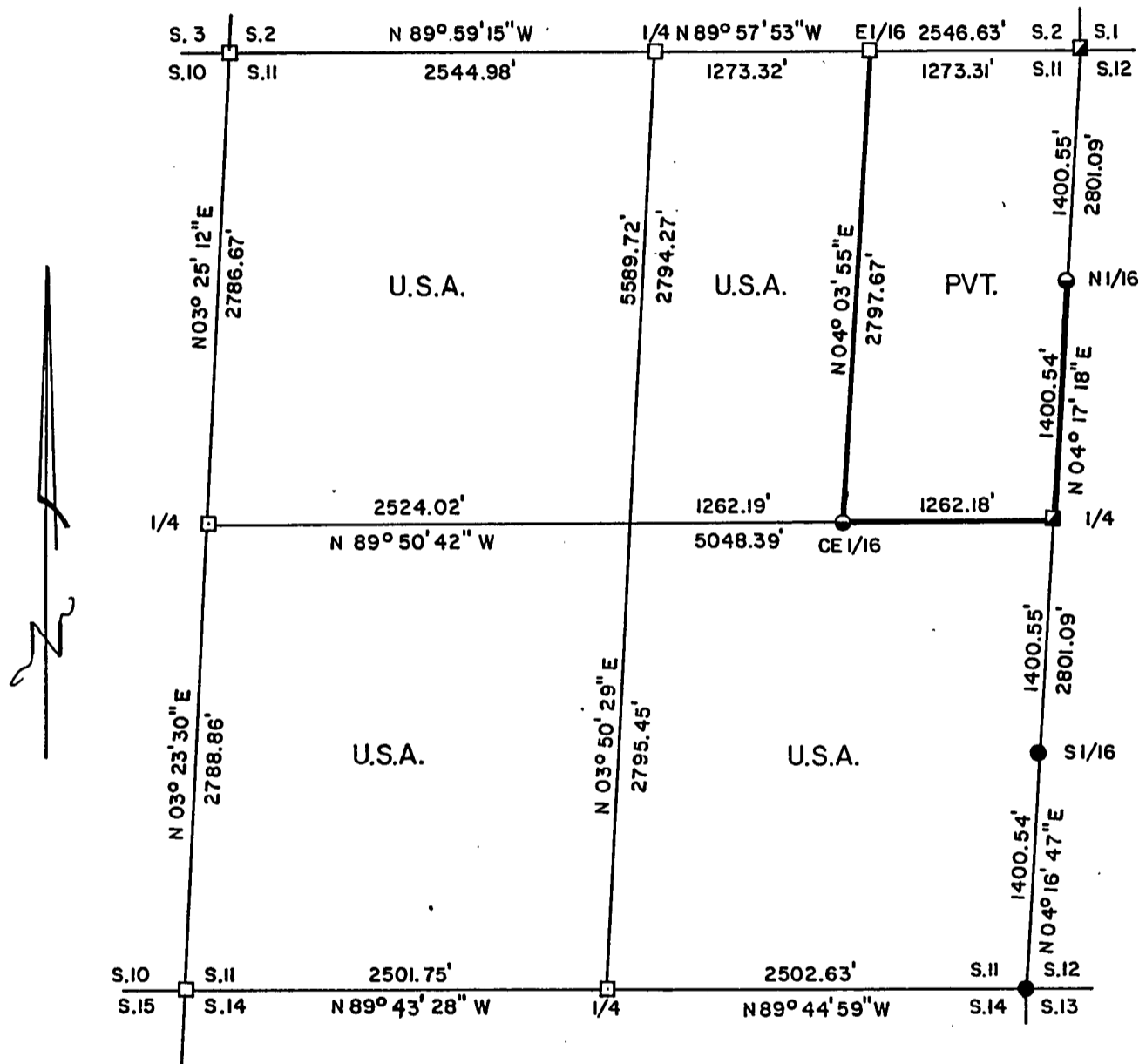


PLAT OF SURVEY FOR CERTIFIED LAND CORNER RESTORATION AND ESTABLISHMENT  
 BEING THE CORNERS FOR THE W1/2-NE1/4, SE1/4, SW1/4, AND NW1/4 OF SECTION II, T.39N. R.13E., FOURTH PRINCIPAL MERIDIAN  
 COUNTY OF FOREST, STATE OF WISCONSIN



LEGEND

- 2 1/2 inch diameter aluminum pipe monument 30 inches long with aluminum cap
- 1 inch diameter aluminum pipe monument 36 inches long with aluminum cap
- Railroad Spike
- BLM Copperweld monument
- Boundary line marked to Forest Service standards

NOTE: Bearings are true bearings as referenced to a solar observation taken at the intersection of State Highway 55 and Jones Creek located near the Southwest corner of Section 13.

FOREST CO SURVEYOR  
 FILE # 391311-1992/217  
 DATE \_\_\_\_\_ BY \_\_\_\_\_

Stock No. 26273

Sheet 2 of 5

SURVEY NOTES

This survey was made by Gary L. Pisoni, a Registered Land Surveyor in the State of Wisconsin, for the U.S.D.A., Forest Service, for the purpose of recovering, restoring, establishing, marking, and perpetuating the corners and boundary lines of U.S. Government Land on the perimeter and within Section 11, Township 39 North, Range 13 East, Fourth Principal Meridian, Forest County, State of Wisconsin, as shown on the plat map herewith.

The Original Government Sub-division of this township was done in 1865 by William E. Daugherty and Alex McDill. Dependent resurvey was done in 1978 by Gary L. Kratz and Michael J. Avery.

The bearings between corner positions are true bearings referenced to a solar observation which was taken at the intersection of State Highway 55 and Jones Creek located near the Southwest corner of Section 13. All distances shown thereon are in feet and hundredths of feet. The control traverse was measured by use of electronic distance measuring equipment.

The accuracy of this survey exceeds the State requirements of 1 in 3000.

The field notes and a copy of the Plat of Survey are on file in the Forest Supervisor's Office at Rhinelander, Wisconsin.

CORNERS RECOVERED AND RESTORED1. Northwest Section Corner

Corner position restored from a Dependent resurvey in 1978 by Gary L. Kratz and Michael J. Avery at proportionate distance and no remaining evidence of the original corner.

1978 Corner Reference Recovered:

Red Maple	16"	S 84°W	36.53 feet
-----------	-----	--------	------------

New Corner References:

Popple	7"	N 86°E	29.41 feet
--------	----	--------	------------

Popple	7"	N 51°W	8.08 feet
--------	----	--------	-----------

Steel sign post		South	0.75 feet
-----------------	--	-------	-----------

2. North Quarter Corner

Corner position restored from a Dependent Resurvey in 1978 by Gary L. Kratz and Michael J. Avery at proportionate distance and no remaining evidence of the original corner.

1978 Corner References:

Cedar	8"	S 59°E	47.52 feet
-------	----	--------	------------

Sugar Maple	6"	N 45°W	33.66 feet
-------------	----	--------	------------

3. East Sixteenth Corner Between Sections 2 and 11

Corner position at midpoint and on line between the North quarter corner and the Northeast Section corner. Corner established from a Dependent Resurvey in 1978 by Gary L. Kratz and Michael J. Avery.

1978 Corner References:

Sugar Maple	10"	S 32°W	21.12 feet
-------------	-----	--------	------------

Balsam	5"	N 08°W	20.46 feet
--------	----	--------	------------

Stock No. 26273

Sheet 3 of 5

4. Northeast Section Corner

Corner position restored from a Dependent Resurvey in 1978 by Gary L. Kratz and Michael J. Avery. Corner position determined at the intersection of State Highway 55 and Zepp Road extending East.

## 1978 Corner References:

White Spruce	10"	N 46°E	40.92 feet
Cedar	10"	S 61°E	114.18 feet
Cedar	10"	S 54°W	66.66 feet
Maple	5"	N 73°W	36.30 feet

## 1990 Corner References:

White Spruce	11"	N 42°E	41.21 feet
Cedar	11"	S 60°E	114.08 feet
Cedar	10"	S 47°W	66.21 feet
Red Maple	5"	N 73°W	36.54 feet

5. East Quarter Corner

Corner position restored from a Dependent Resurvey in 1978 by Gary L. Kratz and Michael J. Avery by proportionate distance.

## 1978 Corner References:

Yellow Birch	14"	N 64°E	45.57 feet
Red Maple	8"	S 88°W	39.78 feet

## New Corner References:

Sugar Maple	8"	S 66°E	63.20 feet
Sugar Maple	12"	N 34°W	73.07 feet

6. Southeast Section Corner

Corner position restored from a Dependent Resurvey in 1978 by Gary L. Kratz and Michael J. Avery. Corner position determined at the intersection of State Highway 55 and Hartline Road extending East.

## 1978 Corner References:

Ash	6"	N 41°E	54.12 feet
Ash	6"	S 72°E	58.08 feet
Ash	6"	S 54°W	34.32 feet
Ash	7"	N 57°W	40.92 feet

## 1990 Corner References:

Ash	6"	N 41°E	54.11 feet
Ash	6"	S 70°E	58.11 feet
Ash	7"	S 55°W	34.74 feet
Ash	7"	N 39°W	41.50 feet

7. South Quarter Corner

Corner position restored from a Dependent Resurvey in 1978 by Gary L. Kratz and Michael J. Avery at proportionate distance and no remaining evidence of the original corner.

## 1978 Corner References Recovered:

Maple	8"	S 28°E	20.55 feet
Maple	7"	N 57°W	11.00 feet

## New Corner References:

Maple	8"	S 87°E	25.04 feet
Maple	7"	S 54°W	11.60 feet

8. Southwest Section Corner

Corner position restored from a Dependent Resurvey in 1978 by Gary L. Kratz and Michael J. Avery from acceptance of a wooden post found and the remains of the original bearing trees.

## 1978 Corner References Recovered:

Balsam	9"	N 11°E	27.06 feet
Cedar	10"	S 45°E	35.29 feet
Cedar	11"	S 60°W	32.49 feet
Yellow Birch	7"	N 71°W	23.49 feet

Stock No. 26273

Sheet 4 of 5

9. West Quarter Corner

Corner position restored from a Dependent Resurvey in 1978 by Gary L. Kratz and Michael J. Avery at proportionate distance and no remaining evidence of the original corner found.

## 1978 Corner References Recovered:

Sugar Maple	12"	S 87°E	28.66 feet
Sugar Maple	12"	N 73°W	20.42 feet

## New Corner References:

Sugar Maple	12"	N 23°W	18.87 feet
Steel sign post		N 20°E	0.62 feet

CORNERS ESTABLISHED1. North Sixteenth Corner Between Sections 11 and 12

Corner position established at midpoint and on line between the Northeast Section corner and the East quarter corner.

## Corner References:

Cedar	15"	S 25°E	23.35 feet
Sugar Maple	6"	S 82°W	11.98 feet
Wood post	4"x4"	S 10°E	16.0 feet
Steel sign post		N 30°E	0.66 feet

2. South Sixteenth Corner Between Sections 11 and 12

Corner position established at midpoint and on line between the Southeast Section corner and the East quarter corner.

## Corner References:

Sugar Maple	8"	N 60°E	50.88 feet
Sugar Maple	8"	S 55°E	55.63 feet
Witness Corner	1"x36" mon.	N 86°05'13"E	28.80 feet
Steel sign post		N 87°E	29.55 feet

3. Center East Sixteenth Corner

Corner position established at midpoint and on line between the East quarter corner and the Center quarter corner.

## Corner References:

Sugar Maple	6"	S 30°W	39.74 feet
Sugar Maple	10"	N 16°W	22.15 feet
Steel sign post		West	0.51 feet

Stock No. 26273

Sheet 5 of 5

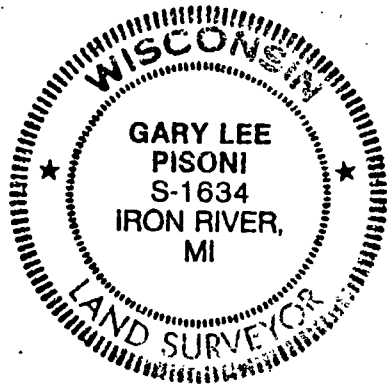
SURVEYOR'S CERTIFICATEState of Wisconsin)ss  
County of Forest

I, Gary L. Pisoni,, a Cadastral Surveyor, and a Registered Land Surveyor in the State of Wisconsin, hereby certify that I have surveyed and sub-divided Section 11, Township 39 North, Range 13 East, Fourth Principal Meridian, State of Wisconsin.

The plat map and survey notes herewith are a correct representation of the land surveyed and divided. I have surveyed and sub-divided said section in accordance with the rules for the survey of public lands and with the statutes of the State of Wisconsin.

Date of Survey: 1990-1991

Gary L. Pisoni  
Cadastral Surveyor  
R.L.S. State of Wisconsin  
Certificate S-1634



Survey requested by; Cam Gardi  
District Ranger

12/17/92  
Date

