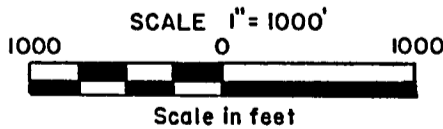
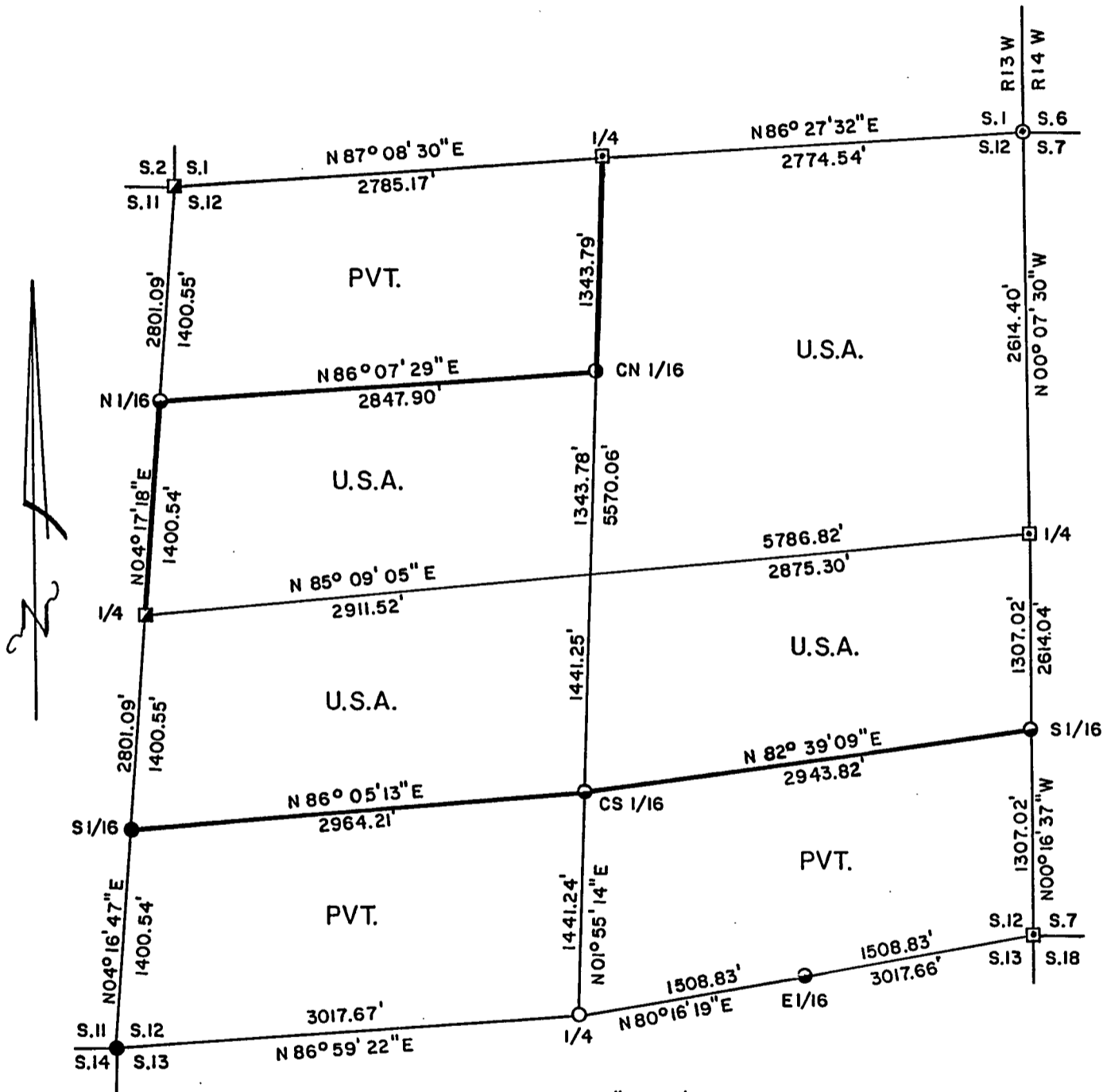


PLAT OF SURVEY FOR CERTIFIED LAND CORNER RESTORATION AND ESTABLISHMENT

BEING THE CORNERS FOR THE NE 1/4, N 1/2-SE 1/4, N 1/2 - SW 1/4, AND S 1/2-NW 1/4 OF SECTION 12, T. 39N. R.13E., FOURTH PRINCIPAL MERIDIAN COUNTY OF FOREST, STATE OF WISCONSIN



LEGEND

- BLM Copperweld Monument
- ⊙ 2½ inch diameter aluminum pipe monument 36 inches long with an aluminum cap U.S.F.S.
- 2 inch I.D. iron pipe monument with a brass cap
- Railroad Spike
- 2½ inch diameter aluminum pipe monument 36 inches long with an aluminum cap
- ◐ 1 inch diameter aluminum pipe monument 36 inches long with an aluminum cap
- ◑ 1 inch diameter aluminum pipe monument 60 inches long with an aluminum cap
- Boundary line marked to Forest Service standards.

Note: Bearings are true bearings as referenced to a solar observation taken at the intersection of State Highway 55 and Jones Creek located near the Southwest corner of Section 13.

FOREST CO SURVEYOR
 FILE # 391312-19921002
 DATE _____ BY _____

Stock No. 26273

Sheet 2 of 5

SURVEY NOTES

This survey was made by Gary L. Pisoni, a Registered Land Surveyor in the State of Wisconsin, for the U.S.D.A., Forest Service, for the purpose of recovering, restoring, establishing, marking, and perpetuating the corners and boundary lines of U.S. Government Land on the perimeter and within Section 12, Township 39 North, Range 13 East, Fourth Principal Meridian, Forest County, State of Wisconsin, as shown on the plat map herewith.

The Original Government Sub-division of this township was done in 1865 by William E. Daugherty and Alex McDill. The East township line was done in 1858 by Artemas Curtis. Dependent resurvey was done in 1978 by Gary L. Kratz and Michael J. Avery.

The bearings between corner positions are true bearings referenced to a solar observation which was taken at the intersection of State Highway 55 and Jones Creek located near the Southwest corner of Section 13. All distances shown thereon are in feet and hundredths of feet. The control traverse was measured by use of electronic distance measuring equipment.

The accuracy of this survey exceeds the State requirements of 1 in 3000.

The field notes and a copy of the Plat of Survey are on file in the Forest Supervisor's Office at Rhinelander, Wisconsin.

CORNERS RECOVERED AND RESTORED1. Northwest Section Corner

Corner restored from a Dependent Resurvey in 1978 by Gary L. Kratz and Michael J. Avery. Corner position determined at the intersection of State Highway 55 and Zepp Road extending East.

1978 Corner References:

White Spruce	10"	N 46°E	40.92 feet
Cedar	10"	S 61°E	114.18 feet
Cedar	10"	S 54°W	66.66 feet
Maple	5"	N 73°W	36.30 feet

1990 Corner References:

White Spruce	11"	N 42°E	41.21 feet
Cedar	11"	S 60°E	114.08 feet
Cedar	10"	S 47°W	66.21 feet
Red maple	5"	N 73°W	36.54 feet

2. North Quarter Corner

Corner restored by Robert Badow RLS in 1959 by acceptance of a wood post, he replaced post with a brass capped iron pipe.

1959 Corner References:

Maple	26"	N 66°E	20.75 feet
Maple	22"	S 26°E	60.60 feet
Yellow Birch	22"	N 80°W	13.17 feet

New Corner References:

Sugar Maple	8"	N 08°W	19.95 feet
Steel sign post		N 33°E	0.4 feet

Stock No. 26273

Sheet 3 of 5

3. Northeast Section Corner

In 1981, William Cochrane RLS U.S.F.S. restored the corner position.

1981 Corner References:

Hemlock	12"	N 56°E	57.00 feet
Hemlock	18"	S 38°E	44.62 feet
Hemlock	14"	S 51°W	83.87 feet
Basswood	8"	N 53°W	36.74 feet

4. East Quarter Corner

In 1971, William Cochrane RLS U.S.F.S. restored the corner position.

1971 Corner References:

Maple	9"	S 49°W	18.30 feet
Maple	11"	N 54°W	16.97 feet
Steel sign post		East	0.50 feet

1985 Corner References by William Cochrane RLS:

Maple	8"	N 10°E	84.45 feet
Maple	9"	S 86°E	62.79 feet
Reset steel sign post		Northwest	2.00 feet

5. South Sixteenth Corner Between Sections 12 and 7

Corner position at midpoint and on line between the East quarter corner and the Southeast Section corner.

1988 Corner References:

Black Ash	7"	N 24°W	19.05 feet
Black Ash	6"	N 89°W	7.23 feet
Wood Post	4"x4"	N 55°W	2.60 feet
Steel sign post		N 45°E	1.06 feet

6. Southeast Section Corner

In 1975, Jean Resvick RLS U.S.F.S. restored the corner position.

1985 Corner References by William Cochrane RLS:

Spruce	16"	N 29°E	51.62 feet
Aspen	12"	South	66.74 feet
Aspen	14"	N 32°W	54.18 feet
Steel sign post		Northeast	3.50 feet

7. South Quarter Corner

Corner position restored by using the centerline of Forest Road No. 3854 and at midpoint between the Southwest and Southeast Section corners of Section 12.

Corner References:

Basswood	10"	N 50°E	44.84 feet
Sugar Maple	6"	S 52°E	64.01 feet
Basswood	11"	S 09°W	60.45 feet
Ash	9"(dbl)	N 62°W	72.37 feet
Steel sign post		North	18.75 feet

Stock No. 26273

Sheet 4 of 5

8. Southwest Section Corner

Corner restored from a Dependent Resurvey in 1978 by Gary L. Kratz and Michael J. Avery. Corner position determined at the intersection of State Highway 55 and Hartline Road extending East.

1978 Corner References:

Ash	6"	N 41 E	54.12 feet
Ash	6"	S 72 E	58.08 feet
Ash	6"	S 54 W	34.32 feet
Ash	7"	N 57 W	40.92 feet

1990 Corner References:

Ash	6"	N 41 E	54.11 feet
Ash	6"	S 70 E	58.11 feet
Ash	7"	S 55 W	34.74 feet
Ash	7"	N 39 W	41.50 feet

9. West Quarter Corner

Corner restored from a Dependent Resurvey in 1978 by Gary L. Kratz and Michael J. Avery by proportionate distance.

1978 Corner References:

Yellow Birch	14"	N 64 E	45.57 feet
Red Maple	8"	S 88 W	39.78 feet

New Corner References:

Sugar Maple	8"	S 66 E	63.20 feet
Sugar Maple	12"	N 34 W	73.07 feet

CORNERS ESTABLISHED**1. North Sixteenth Corner Between Sections 11 and 12**

Corner position established at midpoint and on line between the Northwest Section corner and the West quarter corner.

Corner References:

Cedar	15"	S 25 E	23.35 feet
Sugar Maple	6"	S 82 W	11.98 feet
Wood post	4"x4"	S 10 E	16.0 feet
Steel sign post		N 30 E	0.66 feet

2. Center North Sixteenth Corner

Corner position established at midpoint and on line between the North quarter corner and the Center quarter corner.

Corner References:

Tamarack	4"	N 68 E	15.26 feet
Black Spruce	3"	S 19 W	18.83 feet
Wood post	4"x4"	S 10 E	4.8 feet
Steel sign post		S 56 E	0.44 feet

3. South Sixteenth Corner Between Sections 11 and 12

Corner position established at midpoint and on line between the Southwest Section corner and the West quarter corner.

Corner References:

Sugar Maple	8"	N 60 E	50.88 feet
Sugar Maple	8"	S 55 E	55.63 feet
Witness Corner	1"x36" mon.	N 86°05'13"E	28.80 feet
Steel sign post		N 87 E	29.55 feet

4. Center South Sixteenth Corner

Corner position established at midpoint and on line between the South quarter corner and the Center quarter corner.

Corner References:

Sugar Maple	7"	S 36 E	35.11 feet
Sugar Maple	8"	S 56 W	33.59 feet
Steel sign post		North	0.43 feet

Stock No. 26273

Sheet 5 of 5

5. East Sixteenth Corner Between Sections 12 and 13
 Corner position established at midpoint and on line between the
 Southeast Section corner and the South quarter corner.

Corner References:

Sugar Maple	7"	N 65°E	33.68 feet
Sugar Maple	12"	N 87°W	34.58 feet
Steel sign post		South	0.64 feet

SURVEYOR'S CERTIFICATE

State of Wisconsin)
 County of Forest)

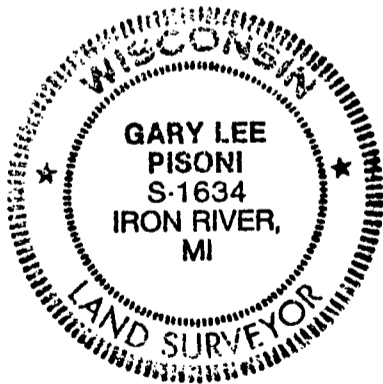
I, Gary L. Pisoni, a Cadastral Surveyor, and a Registered Land Surveyor in the State of Wisconsin, hereby certify that I have surveyed and sub-divided Section 12, Township 39 North, Range 13 East, Fourth Principal Meridian, State of Wisconsin.

The plat map and survey notes herewith are a correct representation of the land surveyed and divided. I have surveyed and sub-divided said section in accordance with the rules for the survey of public lands and with the statutes of the State of Wisconsin.

Date of Survey: 1990

Gary L. Pisoni

 Cadastral Surveyor
 R.L.S. State of Wisconsin
 Certificate S-1634



Survey requested by; _____

Mike Carr
District Ranger*10/2/92*
Date