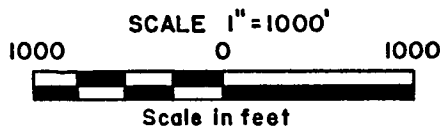
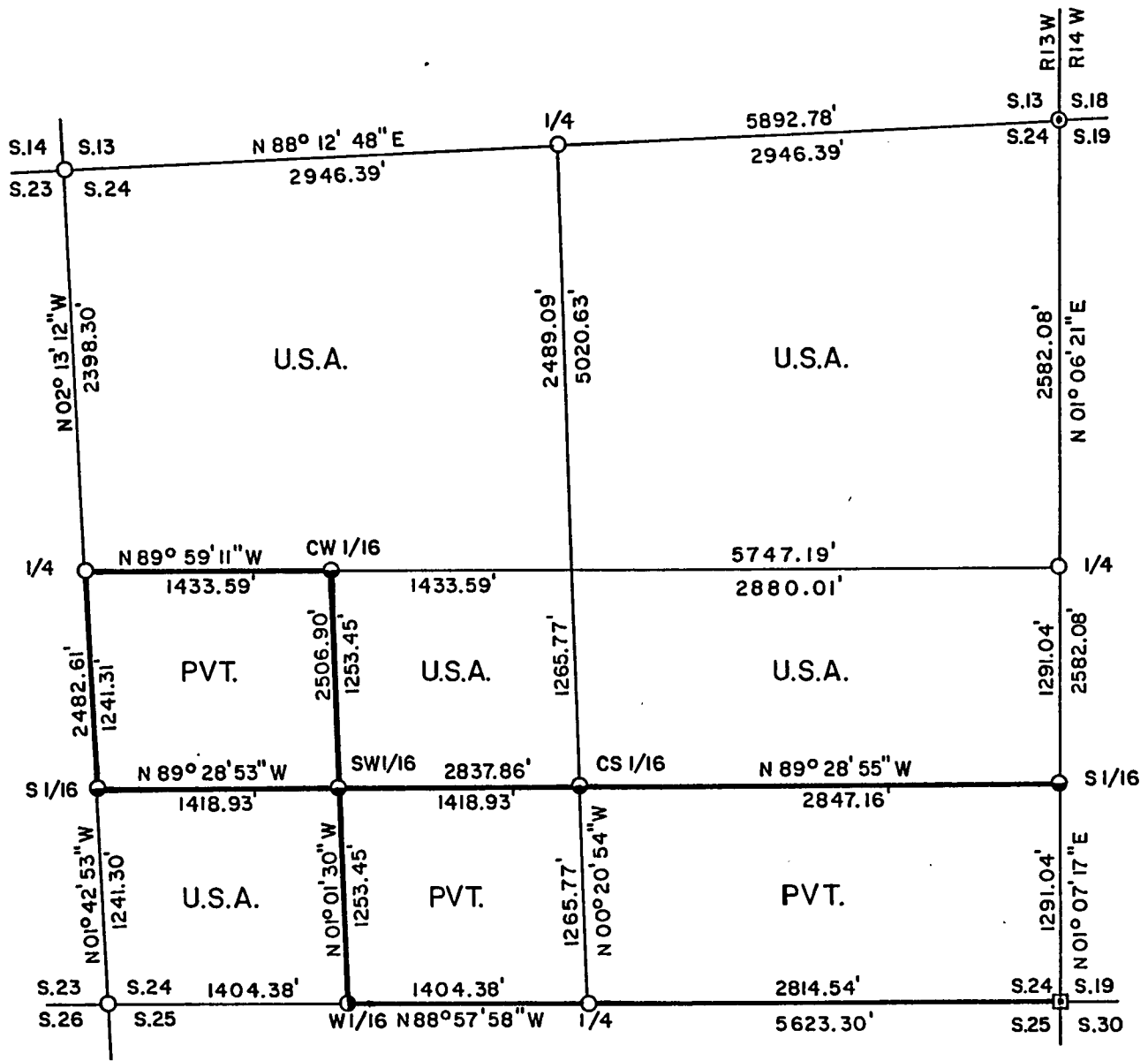


PLAT OF SURVEY FOR CERTIFIED LAND CORNER RESTORATION AND ESTABLISHMENT

BEING THE CORNERS FOR THE NE 1/4, N 1/2 - SE 1/4, NE 1/4 - SW 1/4, SW 1/4 - SW 1/4 AND NW 1/4 OF SECTION 24, T. 39N. R. 13E., FOURTH PRINCIPAL MERIDIAN COUNTY OF FOREST, STATE OF WISCONSIN



LEGEND

- 2 1/2 inch diameter aluminum pipe monument 36 inches long with an aluminum cap
- 2 1/2 inch diameter aluminum pipe monument 60 inches long with an aluminum cap
- ◐ 1 inch diameter aluminum pipe monument 36 inches long with an aluminum cap
- ◑ 1 inch diameter aluminum pipe monument 60 inches long with an aluminum cap
- ◓ 2 inch I.D. iron pipe monument with a brass cap
- Boundary line marked to Forest Service standards

Note: Bearings are true bearings as referenced to a solar observation taken at the intersection of State Highway 55 and Jones Creek located near the Southwest corner of Section 13.

FOREST CO SURVEYOR
 FILE # 391324-19921002
 DATE _____ BY _____

Stock No. 26273

Sheet 2 of 5

SURVEY NOTES

This survey was made by Gary L. Pisoni, a Registered Land Surveyor in the State of Wisconsin, for the U.S.D.A., Forest Service, for the purpose of recovering, restoring, establishing, marking, and perpetuating the corners and boundary lines of U.S. Government Land on the perimeter and within Section 24, Township 39 North, Range 13 East, Fourth Principal Meridian, Forest County, State of Wisconsin, as shown on the plat map herewith.

The Original Government Sub-division of this township was done in 1865 by William E. Daugherty and Alex McDill. The East township line was done in 1858 by Artemas Curtis.

The bearings between corner positions are true bearings referenced to a solar observation which was taken at the intersection of State Highway 55 and Jones Creek located near the Southwest corner of Section 13. All distances shown thereon are in feet and hundredths of feet. The control traverse was measured by use of electronic distance measuring equipment.

The accuracy of this survey exceeds the State requirements of 1 in 3000.

The field notes and a copy of the Plat of Survey are on file in the Forest Supervisor's Office at Rhinelander, Wisconsin.

CORNERS RECOVERED AND RESTORED1. Northwest Section Corner

Corner position restored by single proportionate distance and on line between the Northwest Section corner of Section 13 and the West quarter corner of Section 24.

Corner References:

Cedar	13"	N 49°E	43.29 feet
Red Maple	8"	S 56°E	15.30 feet
Red Maple	8"	S 14°W	37.31 feet
Red Maple	7"	N 58°W	29.22 feet
Steel sign post		North	1.15 feet

2. North Quarter Corner

Corner position restored at proportionate distance and on line between the Northwest and the Northeast Section corners of Section 24.

Corner References:

White Spruce	13"	S 44°W	53.22 feet
White Spruce	11"	N 74°W	39.72 feet
White Spruce	10"	N 27°W	16.75 feet
White Spruce	12"	N 79°E	47.47 feet
Steel sign post		S 35°E	0.66 feet

3. Northeast Section Corner

Corner position restored in 1985 by William Cochrane RLS U.S.F.S. by using Melindy's recorded distance from the East quarter corner witness post of Section 13 on a straight line through the south 1/16 corner post between Sections 13 and 18 by Melindy in 1929.

Corner References:

Tamarack	10"	S 78°E	61.18 feet
Tamarack	16"	S 33°E	68.70 feet
Steel sign post		North	0.50 feet

Stock No. 26273

Sheet 3 of 5

4. East Quarter Corner

Corner position restored in 1986 by William Cochrane RLS U.S.F.S. by resetting the corner position at proportionate distance and on line between the Northeast and Southeast Section corners of Section 24.

1986 Corner References:

Red Maple	8"	N 46°E	16.90 feet
Red Maple	8"	S 30°E	13.05 feet
Steel sign post		Northeast	1.00 feet

5. South Sixteenth Corner Between Sections 24 and 19

Corner position at midpoint and on line between the East quarter corner and the Southeast Section corner.

1988 Corner References:

Cedar	7"	N 08°E	15.42 feet
Cedar	8"	N 87°W	17.00 feet
Steel sign post		Northeast	1.00 feet

6. Southeast Section Corner

In 1978, Jean Resvick RLS U.S.F.S. restored the corner position from acceptance of a 6"x6" scribed post in concurrence with original bearing tree evidence.

1978 Corner References:

Balsam	9"	N 83°E	12.63 feet
Spruce	7"	N 27°W	15.56 feet
High point on rock		S 53°W	30.90 feet

7. South Quarter Corner

Corner position restored from acceptance of an 1 1/4"x 48" iron pipe marking corner position.

Corner References:

Red Pine	7"	N 35°E	5.85 feet
Red Pine	12"	N 83°E	44.20 feet
Red Pine	12"	S 12°E	20.89 feet
Red Pine	12"	S 37°W	5.38 feet
Steel sign post		S 30°E	0.86 feet

8. Southwest Section Corner

Corner position restored by using the projected centerline of Highway 55 to the South and the projection of the East 1/2 of the South Section line of Section 24. Corner position approximately 1 ft. West of the West edge of State Highway 55.

Corner References:

Sugar Maple	7"	S 36°W	53.63 feet
Red Maple	8"	N 81°W	41.81 feet
Sugar Maple	8"	N 44°W	36.95 feet
Balsam	8"	N 89°E	55.22 feet
Steel sign post		West	16.60 feet

9. West Quarter Corner

Corner position restored in 1988 by William Cochrane RLS U.S.F.S. from acceptance of a 3"x3"x36" squared cedar post.

1988 Corner References:

Maple	10"	N 10°E	16.87 feet
Spruce	8"	N 63°W	11.74 feet
Steel sign post		located on West side of monument	

Stock No. 26273

Sheet 4 of 5

1. Center West Sixteenth Corner

Corner position established at midpoint and on line between the West quarter corner and the Center quarter corner.

Corner References:

Balsam	10"	S 45°E	30.68 feet
Balsam	6"	S 01°E	33.47 feet
Steel sign post		N 81°E	1.5 feet

2. South Sixteenth Corner Between Sections 23 and 24

Corner position established at midpoint and on line between the West quarter corner and the Southwest Section corner.

Corner References:

Red Maple	8"	S 61°E	26.48 feet
Red Maple	14"	S 13°W	32.07 feet
Steel sign post		West	0.59 feet

3. Southwest Sixteenth Corner

Corner position established at the intersection of the straight lines between opposing sixteenth corner positions on the perimeter of the Southwest quarter of Section 24.

Corner References:

Ash	14"	S 50°W	35.28 feet
White Spruce	16"	N 28°E	26.60 feet
Steel sign post		N 48°W	0.81 feet

4. West Sixteenth Corner Between Sections 24 and 25

Corner position established at midpoint and on line between the South quarter corner and the Southwest Section corner.

Corner References:

Black Spruce	3"	S 35°E	9.51 feet
Black Spruce	5"	N 68°W	30.63 feet
Steel sign post		South	0.60 feet

5. Center South Sixteenth Corner

Corner position established at midpoint and on line between the South quarter corner and the Center quarter corner.

Corner References:

White Spruce	8"	S 65°E	13.85 feet
Balsam	7"	S 21°W	35.39 feet
Steel sign post		N 70°W	1.0 feet

Stock No. 26273

Sheet 5 of 5

SURVEYOR'S CERTIFICATE

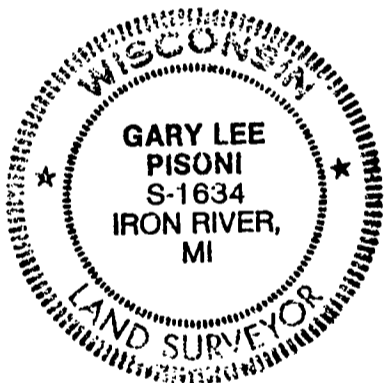
State of Wisconsin)ss
County of Forest)

I, Gary L. Pisoni, a Cadastral Surveyor, and a Registered Land Surveyor in the State of Wisconsin, hereby certify that I have surveyed and sub-divided Section 24, Township 39 North, Range 13 East, Fourth Principal Meridian, State of Wisconsin.

The plat map and survey notes herewith are a correct representation of the land surveyed and divided. I have surveyed and sub-divided said section in accordance with the rules for the survey of public lands and with the statutes of the State of Wisconsin.

Date of Survey: 1990

Gary L. Pisoni
Cadastral Surveyor
R.L.S. State of Wisconsin
Certificate S-1634



Survey requested by;

[Signature]
District Ranger

[Signature]
Date

