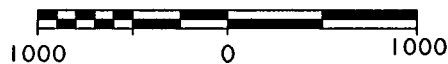
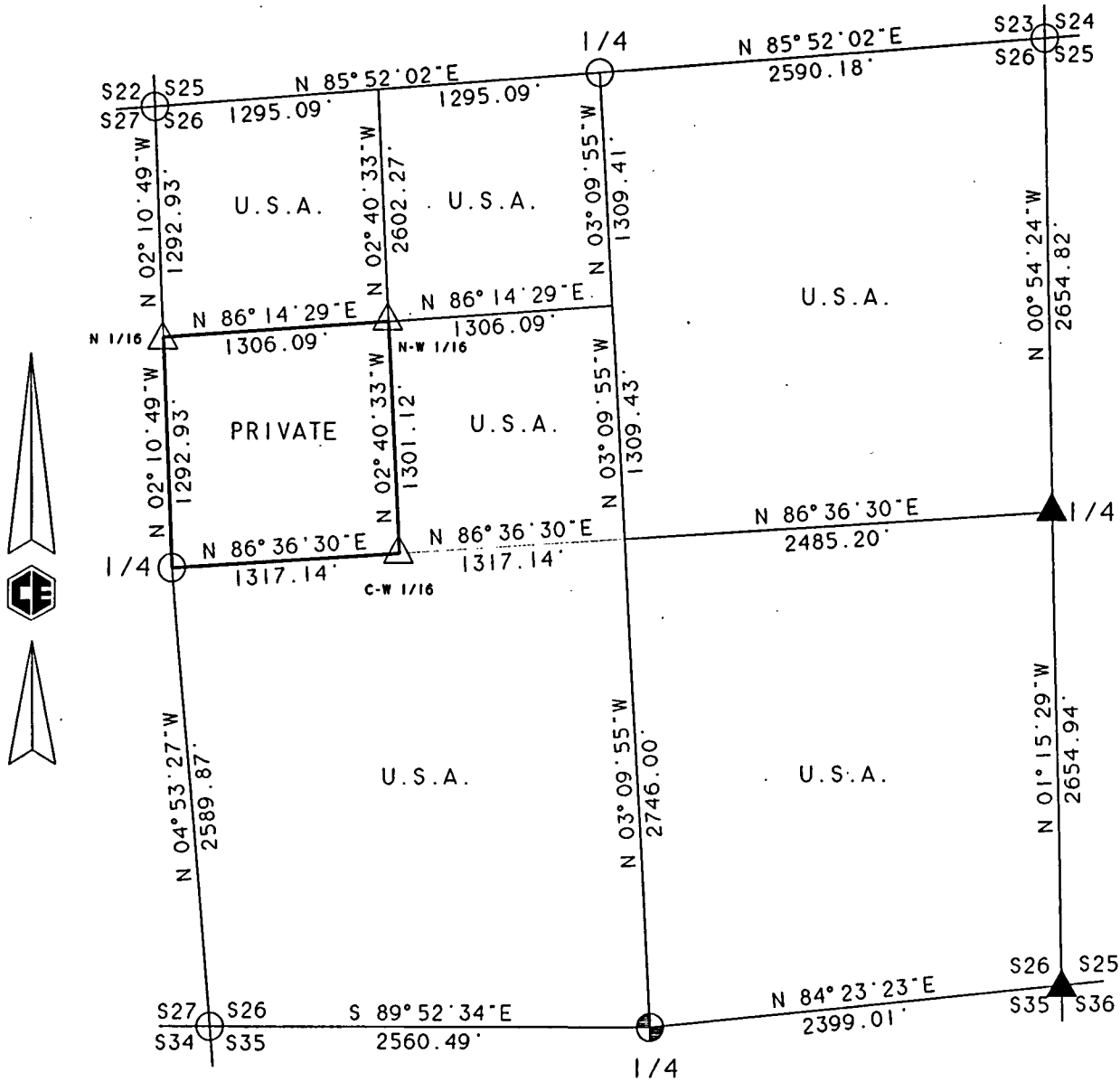


PLAT OF SURVEY FOR CERTIFIED LAND CORNER RESTORATION AND ESTABLISHMENT

BEING THE CORNERS FOR THE SW 1/4 OF THE NW 1/4
AND THE CORNERS ON THE PERIMETER OF THE SECTION.

SECTION 26. TOWNSHIP 39 NORTH. RANGE 13 EAST.

COUNTY OF FOREST. STATE OF WISCONSIN



GRAPHIC SCALE - 1" = 1000'

FOREST CO SURVEYOR
FILE # 391326-19970820
DATE _____ BY _____

LEGEND

- 2 1/2 INCH DIAMETER GALVANIZED IRON PIPE MONUMENT WITH BRASS CAP
- △ 1 INCH DIAMETER ALUMINUM PIPE MONUMENT 36 INCHES LONG WITH AN ALUMINUM CAP.
- ▲ FOUND RAILROAD SPIKE IN PAVEMENT
- 2 1/2 INCH DIAMETER ALUMINUM PIPE MONUMENT 36 INCHES LONG WITH AN ALUMINUM CAP
- ⊕ 2 1/2 INCH DIAMETER ALUMINUM PIPE MONUMENT 60 INCHES LONG WITH AN ALUMINUM CAP
- BOUNDARY LINE MARKED TO FOREST SERVICE STANDARD



Stock No. 26273

SURVEY NOTESSection 26, T39N - R13E

This survey was made by Coleman Engineering Company for the U.S. Department of Agriculture - Forest Service under Contract No. 53-56A6-4-00936 for the purpose of restoring and establishing corners on the perimeter of Section 26 and interior corners for subdivision of Section 26, and for locating and marking boundaries of U.S. Government lands along the perimeter and within Section 26, Township 39 North, Range 13 East, Fourth Principal Meridian, Forest County, State of Wisconsin as shown on the plat map herewith.

The original township subdivision survey of T39N, R13E was completed in 1865 by William E. Daugherty.

The corner positions recovered, restored and established by this survey are marked by the monument described in the map legend. The corner positions established were located to a minimum accuracy of 1 part in 5000. Each monumented corner is referenced to blazed scribed, painted and tagged bearing trees. Tie bearings to the bearing trees are magnetic and are not corrected for declination. The bearings between corner positions are based on a Global Positioning Network provided to Coleman Engineering Company by the U.S. Forest Service.

The field notes and a copy of the Plat of Survey are on file in the Forest Service Supervisor's office in Rhinelander, Wisconsin and the District Ranger's office at Eagle River, Wisconsin.

CORNERS RECOVERED OR RESTORED1. Northeast Section Corner

Corner position restored in 1990 by Gary Pisoni R.L.S. No. 1634; and is on file in Forest County Register of Deeds Office as Document No. 146923.

Corner References:

Sugar Maple	7"	S36°W	53.63 feet
Red Maple	8"	N81°W	41.81 feet
Sugar Maple	8"	N44°W	36.95 feet
Balsam	8"	N89°E	55.22 feet
Steel Sign Post		West	16.60 feet



Stock No. 26273

2. East Quarter Corner

Corner position restored in 1993 by William Cochrane R.L.S. No. 1107 and is on file in Forest County Register of Deeds Office as Document No. 156583.

Corner References:

Aspen	10"	N63°E	38.35 feet
Balsam	6"	S59°E	44.40 feet
Reference Monument		East	41.00 feet

3. Southeast Section Corner

Corner position restored in 1993 by William Cochrane R.L.S. No. 1107 and is on file in Forest County Register of Deeds Office as Document No. 156590.

Corner References:

Aspen	8"	N46°E	60.43 feet
Red Pine	9"	S74°E	70.39 feet
Red Pine	10"	S74°W	53.48 feet
Red Pine	10"	N70°W	53.61 feet
Reference Monument		East	33.00 feet

4. South Quarter Corner

Corner position restored in 1994 by William Cochrane R.L.S. No. 1107 and is on file in Forest County Register of Deeds Office as Document No. 156589.

Corner References:

Black Spruce	8"	N15°E	24.16 feet
Black Spruce	7"	N73°W	17.79 feet
Steel Sign Post		South	1.00 feet

5. Southwest Section Corner

Corner position restored in 1994 by William Cochrane R.L.S. No. 1107 and is on file in Forest County Register of Deeds Office as Document No. 156588.

Corner References:

Spruce	15"	N67°E	4.83 feet
Spruce	12"	S04°E	31.08 feet
White Pine	11"	S65°W	43.41 feet
White Pine	20"	N54°W	39.40 feet
Steel Sign Post		North	1.00 feet



Stock No. 26273

6. West Quarter Corner

Corner position restored in 1994 by William Cochrane R.L.S. No. 1107 and is on file in Forest County Register of Deeds Office as Document No. 156582.

Corner References:

Maple	7"	S63°E	33.18 feet
Maple	9"	S16°W	8.53 feet
Steel Sign Post		South	1.00 feet

7. Northwest Section Corner

Corner position recovered and restored in 1994 by William Cochrane R.L.S. No. 1107 and is on file in Forest County Register of Deeds Office as Document No. 156578.

Corner References:

Maple	9"	N56°E	23.51 feet
Maple	8"	S22°E	25.80 feet
Maple	8"	S45°W	36.41 feet
Maple	8"	N39°W	35.35 feet
Steel Sign Post		West	0.75 feet

8. North Quarter Corner

Corner position restored in 1994 by William Cochrane R.L.S. No. 1107 and is on file in Forest County Register of Deeds Office as Document No. 156579.

Corner References:

Maple	10"	S20°W	42.45 feet
Maple	7"	S59°W	47.28 feet
Steel Sign Post		West	0.50 feet

CORNERS ESTABLISHED1. North One-Sixteenth Corner between Sections 26 and 27

Set 1" x 36" aluminum monument on line and at the mid-point between the West Quarter Corner and the Northwest Corner of Section 26.

Corner References:

Sugar	10"	N38°E	18.18 feet
Sugar	7"	N35°W	23.29 feet
Steel Sign Post		Northwest	1.05 feet



Stock No. 26273

2. Northwest One-Sixteenth Corner

Set 1" x 36" aluminum monument at the intersection of the North and West One-Sixteenth lines.

Corner References:

Black Ash	7"	S39°W	29.06 feet
Cedar	14"	N70°W	8.56 feet
Steel Sign Post		Northeast	1.70 feet

3. Center West One-Sixteenth Corner

Set 1" x 36" aluminum monument on line and at the mid-point between the West Quarter Corner and the Center of Section.

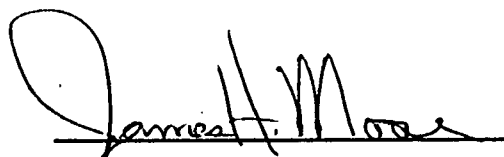
Corner References:

Cedar	7"	S30°E	34.13 feet
Cedar	8"	S77°E	53.36 feet
Steel Sign Post		Southeast	0.92 feet

SURVEYOR'S AFFIDAVIT

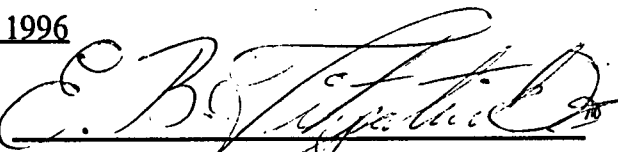
I, James H. Moore, a registered Land Surveyor in the State of Wisconsin, hereby certify that I have surveyed and sub-divided Section 26, Township 39 North, Range 13 East, Fourth Principal Meridian, Forest County, State of Wisconsin.

The plat map and survey notes herewith are a correct representation of the land surveyed and subdivided. I have surveyed and sub-divided said section in accordance with the rules for the Survey of Public Lands and the Statutes of the State of Wisconsin.


 Land Surveyor

R.L.S. State of WisconsinCertificate S-1641Date of Survey April 1996

Survey requested by:


 District Ranger

8/30/97
 Date

