

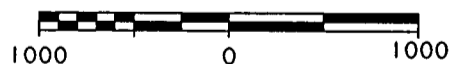
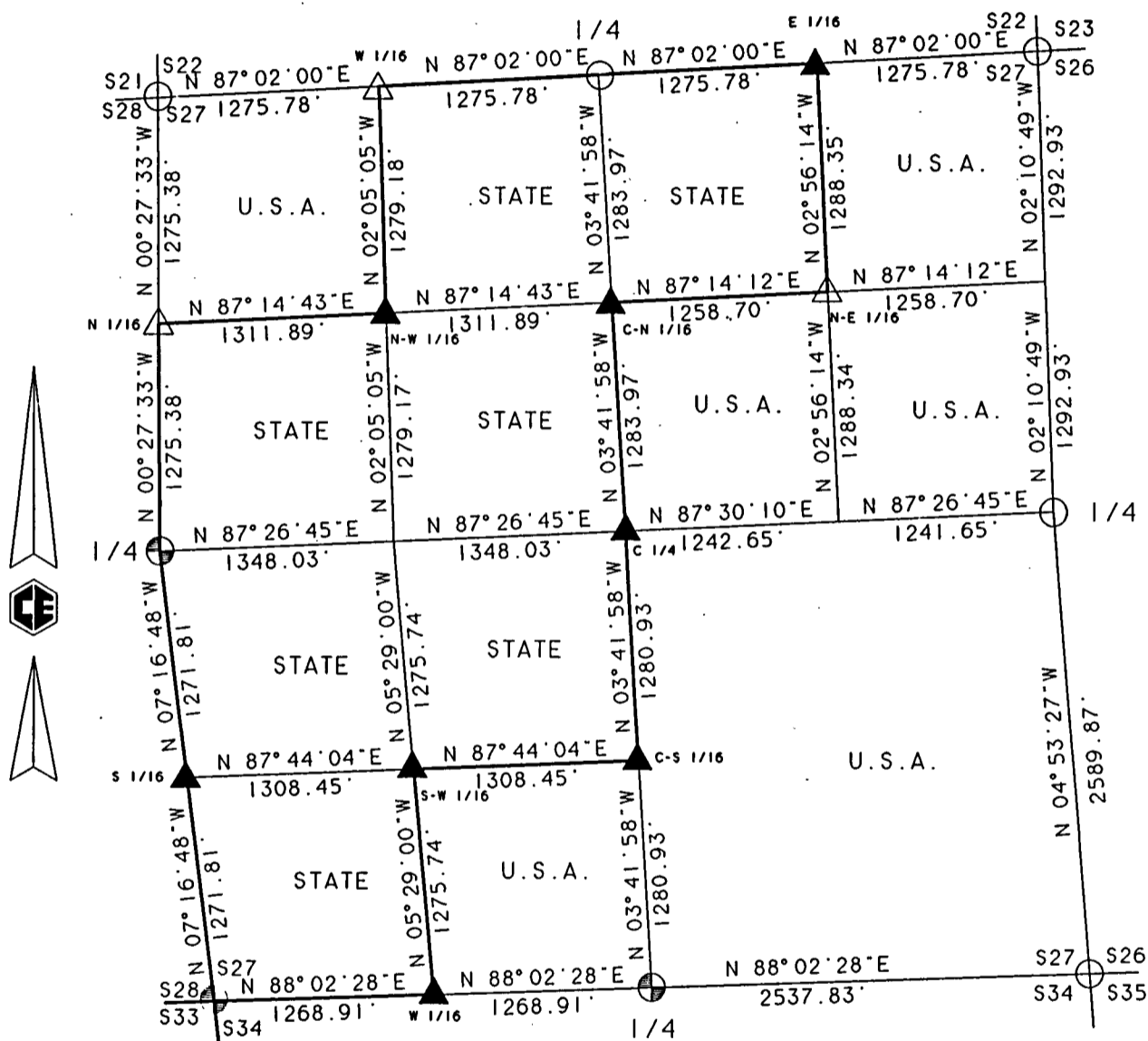
Stock No. 26273

PLAT OF SURVEY FOR CERTIFIED LAND CORNER RESTORATION AND ESTABLISHMENT

BEING THE CORNERS FOR THE SW 1/4 OF THE SW 1/4
AND THE NW 1/4 OF THE SE 1/4 AND THE CORNERS ON
THE PERIMETER OF THE SECTION.

SECTION 27. TOWNSHIP 39 NORTH. RANGE 13 EAST.

COUNTY OF FOREST. STATE OF WISCONSIN



GRAPHIC SCALE - 1" = 1000'

FOREST CO SURVEYOR

FILE # 391327-19970820

DATE _____ BY _____

LEGEND

- 2 1/2 INCH DIAMETER GALVANIZED IRON PIPE MONUMENT WITH BRASS CAP
- △ 1 INCH DIAMETER ALUMINUM PIPE MONUMENT 36 INCHES LONG WITH AN ALUMINUM CAP
- ▲ 1 INCH DIAMETER ALUMINUM PIPE MONUMENT 60 INCHES LONG WITH AN ALUMINUM CAP
- 2 1/2 INCH DIAMETER ALUMINUM PIPE MONUMENT 36 INCHES LONG WITH AN ALUMINUM CAP
- ⊕ 2 1/2 INCH DIAMETER ALUMINUM PIPE MONUMENT 60 INCHES LONG WITH AN ALUMINUM CAP
- BOUNDARY LINE MARKED TO FOREST SERVICE STANDARD



Stock No. 26273

SURVEY NOTESSection 27, T39N - R13E

This survey was made by Coleman Engineering Company for the U.S. Department of Agriculture - Forest Service under Contract No. 53-56A6-4-00936 for the purpose of restoring and establishing corners on the perimeter of Section 27 and interior corners for subdivision of Section 27, and for locating and marking boundaries of U.S. Government lands along the perimeter and within Section 27, Township 39 North, Range 13 East, Fourth Principal Meridian, Forest County, State of Wisconsin as shown on the plat map herewith.

The original township subdivision survey of T39N, R13E was completed in 1865 by William E. Daugherty.

The corner positions recovered, restored and established by this survey are marked by the monument described in the map legend. The corner positions established were located to a minimum accuracy of 1 part in 5000. Each monumented corner is referenced to blazed scribed, painted and tagged bearing trees. Tie bearings to the bearing trees are magnetic and are not corrected for declination. The bearings between corner positions are based on a Global Positioning Network provided to Coleman Engineering Company by the U.S. Forest Service.

The field notes and a copy of the Plat of Survey are on file in the Forest Service Supervisor's office in Rhinelander, Wisconsin and the District Ranger's office at Eagle River, Wisconsin.

CORNERS RECOVERED OR RESTORED1. Northeast Section Corner

Corner position recovered and restored in 1994 by William Cochrane R.L.S. No. 1107; and is on file in Forest County Register of Deeds Office as Document No. 156578.

Corner References:

Maple	9"	N56°E	23.51 feet
Maple	8"	S22°E	25.80 feet
Maple	8"	S45°W	36.41 feet
Maple	8"	N39°W	35.35 feet
Steel Sign Post		West	0.75 feet



Stock No. 26273

2. East Quarter Corner

Corner position restored in 1994 by William Cochrane R.L.S. and is on file in Forest County Register of Deeds Office as Document No. 156582.

Corner References:

Maple	7"	S63°E	33.8 feet
Maple	9"	S16°W	8.53 feet
Steel Sign Post		South	1.00 feet

3. Southeast Section Corner

Corner position restored in 1994 by William Cochrane R.L.S. and is on file in Forest County Register of Deeds Office as Document No. 156588.

Corner References:

Spruce	15"	N67°E	4.83 feet
Spruce	12"	S04°E	31.08 feet
White Pine	11"	S65°W	43.41 feet
White Pine	20"	N54°W	39.40 feet
Steel Sign Post		North	1.00 feet

4. South Quarter Corner

Corner position restored in 1994 by William Cochrane R.L.S. and is on file in Forest County Register of Deeds Office as Document No. 156587.

Corner References:

Cedar	10"	S71°E	11.70 feet
Black Ash	8"	S27°W	17.12 feet
Steel Sign Post		South	1.00 feet

5. Southwest Section Corner

Corner position restored in 1994 by William Cochrane R.L.S. and is on file in Forest County Register of Deeds Office as Document No. 156586.

Corner References:

Cedar	13"	N35°E	25.09 feet
Cedar	13"	S86°E	24.72 feet
Steel Sign Post		North	1.00 feet

No other accessories available.



Stock No. 26273

6. West Quarter Corner

Corner position recovered and restored in 1994 by William Cochrane R.L.S. and is on file in Forest County Register of Deeds Office as Document No. 156581.

Corner References:

Cedar	9"	S73°E	35.60 feet
Cedar	11"	North	30.02 feet
Steel Sign Post		Southwest	1.00 feet

7. Northwest Section Corner

Corner position restored in 1994 by William Cochrane R.L.S. and is on file in Forest County Register of Deeds Office as Document No. 156576.

Corner References:

Maple	12"	N34°E	26.78 feet
Maple	14"	S77°E	20.75 feet
Basswood	11"	S42°W	29.40 feet
Maple	13"	N80°W	18.36 feet
Steel Sign Post		East	1.00 feet

8. North Quarter Corner

Corner position restored in 1994 by William Cochrane R.L.S. and is on file in Forest County Register of Deeds Office as Document No. 156577.

Corner References:

Maple	11"	N03°E	25.93 feet
Maple	12"	N89°W	21.64 feet
Steel Sign Post		West	0.75 feet

9. North One-Sixteenth Corner between Sections 27 and 28

Found stamped aluminum monument set by U.S. Forest Service on line and mid-point between the West Quarter Corner and the Northwest Corner of Section 27.

CORNERS ESTABLISHED1. South One-Sixteenth Corner between Sections 27 and 28

Set 1" x 60" aluminum monument on line and at the mid-point between the West Quarter Corner and the Southwest Corner of Section 27.

Corner References:

Cedar	7"	S06°W	36.34 feet
Cedar	10"	S70°W	45.95 feet
Steel Sign Post		Southwest	0.80 feet



Stock No. 26273

2. West One-Sixteenth Corner between Sections 22 and 27

Set 1" x 36" aluminum monument on line and at the mid-point between the North Quarter Corner and the Northwest Corner of Section 27.

Corner References:

Sugar	8"	N75°E	30.58 feet
Sugar	10"	N43°W	47.07 feet
Steel Sign Post		Northwest	0.89 feet

3. Northwest One-Sixteenth Corner

Set 1" x 60" aluminum monument at the intersection of the North and West One-Sixteenth lines.

Corner References:

Cedar	9"	N68°E	11.00 feet
Cedar	9"	S44°E	11.20 feet
Steel Sign Post		Northwest	0.86 feet

4. Southwest One-Sixteenth Corner

Set 1" x 60" aluminum monument at the intersection of the South and West One-Sixteenth lines.

Corner References:

Cedar	9"	N80°E	19.12 feet
Cedar	8"	S17°W	25.54 feet
Steel Sign Post		Southeast	0.77 feet

5. West One-Sixteenth Corner between Sections 27 and 34

Set 1" x 60" aluminum monument on line and at the mid-point between the South Quarter Corner and the Southwest Corner of Section 27.

Corner References:

Cedar	8"	S22°E	18.62 feet
Cedar	6"	S65°W	7.99 feet
Steel Sign Post		Southeast	0.89 feet

6. Center North One-Sixteenth Corner

Set 1" x 60" aluminum monument on line and at the mid-point between the North Quarter Corner and the Center of Section.

Corner References:

Cedar	11"	S54°E	7.16 feet
Cedar	9"	N60°W	4.00 feet
Steel Sign Post		Southeast	0.90 feet



Stock No. 26273

7. Center of Section

Set 1" x 60" aluminum monument at the intersection of the North-South and East-West Quarter lines.

Corner References:

Balsam	5"	S85°E	30.24 feet
Cedar	9"	S05°W	56.62 feet
Steel Sign Post		South	0.75 feet

8. Center South One-Sixteenth Corner

Set 1" x 60" aluminum monument on line and at the mid-point between the South Quarter Corner and the Center of Section.

Corner References:

Black Ash	6"	N57°E	18.71 feet
Cedar	14"	S19°E	58.88 feet
Steel Sign Post		Southeast	0.69 feet

9. East One-Sixteenth Corner between Sections 22 and 27

Set 1" x 60" aluminum monument on line and at the mid-point between the North Quarter Corner and the Northeast Corner of Section 27.

Corner References:

Cedar	18"	N20°E	60.43 feet
Cedar	13"	N13°E	25.26 feet
Steel Sign Post		Northwest	0.47 feet

10. Northeast One-Sixteenth Corner

Set 1" x 36" aluminum monument at the intersection of the North and East One-Sixteenth lines.

Corner References:

Sugar	10"	N31°E	36.25 feet
Sugar	7"	S43°E	25.10 feet
Steel Sign Post		Southeast	0.90 feet



Stock No. 26273

SURVEYOR'S AFFIDAVIT

I, James H. Moore, a registered Land Surveyor in the State of Wisconsin, hereby certify that I have surveyed and sub-divided Section 27, Township 39 North, Range 13 East, Fourth Principal Meridian, Forest County, State of Wisconsin.

The plat map and survey notes herewith are a correct representation of the land surveyed and subdivided. I have surveyed and sub-divided said section in accordance with the rules for the Survey of Public Lands and the Statutes of the State of Wisconsin.

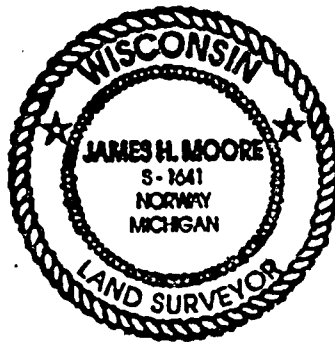
James H. Moore

Land Surveyor

R.L.S. State of Wisconsin

Certificate S-1641

Date of Survey April, 1996



Survey requested by:

[Signature]
District Ranger

8/29/97
Date

