



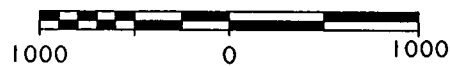
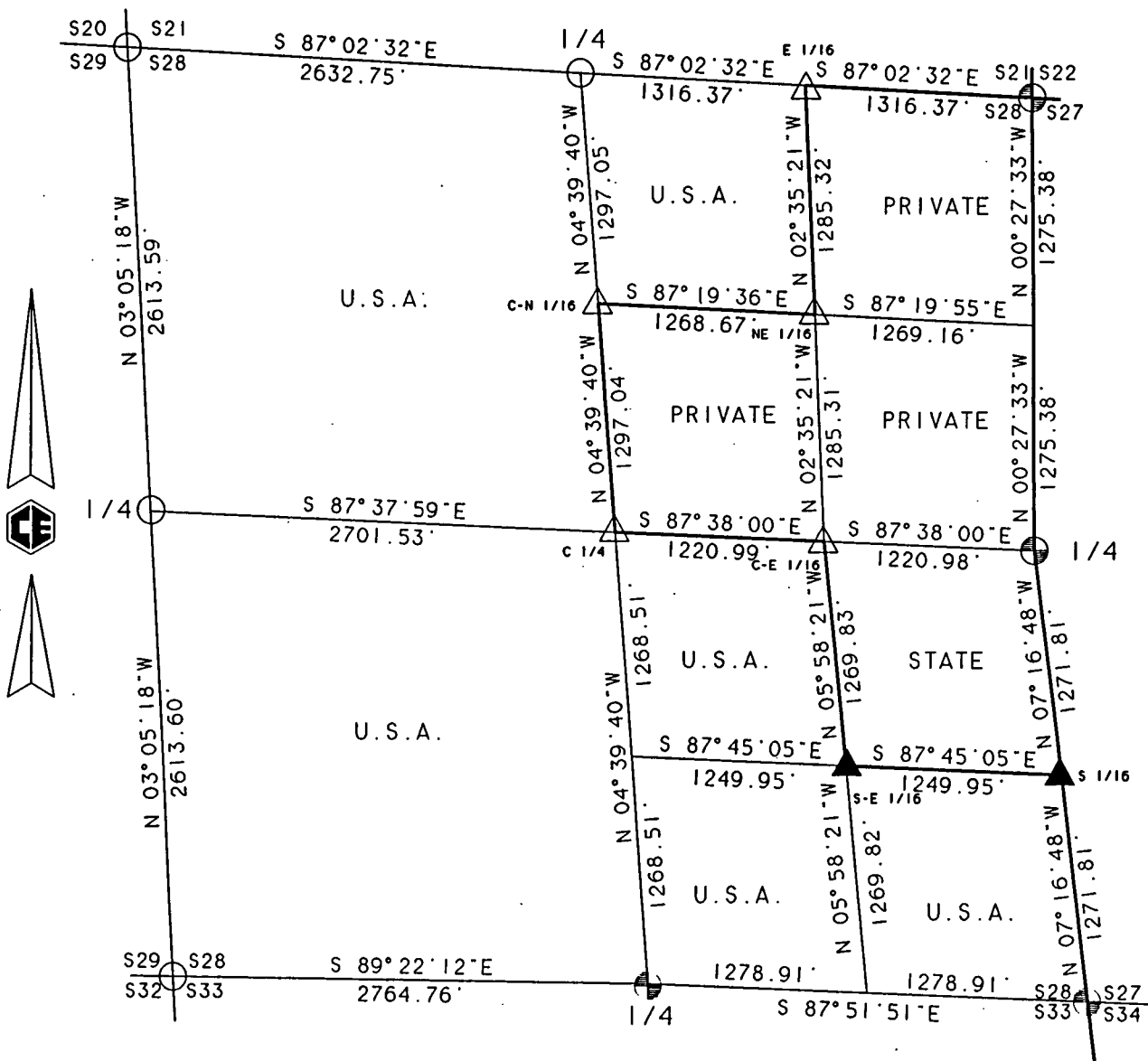
Stock No. 26273

PLAT OF SURVEY FOR CERTIFIED LAND CORNER RESTORATION AND ESTABLISHMENT

BEING THE CORNERS FOR THE E 1/2 OF THE NE 1/4,
THE SW 1/4 OF THE NE 1/4 AND THE NE 1/4 OF THE
SE 1/4 AND THE CORNERS ON THE PERIMETER OF THE SECTION.

SECTION 28. TOWNSHIP 39 NORTH. RANGE 13 EAST.

COUNTY OF FOREST. STATE OF WISCONSIN



GRAPHIC SCALE - 1" = 1000'

FOREST CO SURVEYOR
FILE # 391328-19970800
DATE _____ BY _____

LEGEND

- 2 1/2 INCH DIAMETER GALVANIZED IRON PIPE MONUMENT WITH BRASS CAP
- △ 1 INCH DIAMETER ALUMINUM PIPE MONUMENT 36 INCHES LONG WITH AN ALUMINUM CAP.
- ▲ 1 INCH DIAMETER ALUMINUM PIPE MONUMENT 60 INCHES LONG WITH AN ALUMINUM CAP
- 2 1/2 INCH DIAMETER ALUMINUM PIPE MONUMENT 36 INCHES LONG WITH AN ALUMINUM CAP
- ⊕ 2 1/2 INCH DIAMETER ALUMINUM PIPE MONUMENT 60 INCHES LONG WITH AN ALUMINUM CAP

— BOUNDARY LINE MARKED TO FOREST SERVICE STANDARD



Stock No. 26273

SURVEY NOTES

Section 28, T39N - R13E

This survey was made by Coleman Engineering Company for the U.S. Department of Agriculture - Forest Service under Contract No. 53-56A6-4-00936 for the purpose of restoring and establishing corners on the perimeter of Section 28 and interior corners for subdivision of Section 28, and for locating and marking boundaries of U.S. Government lands along the perimeter and within Section 28, Township 39 North, Range 13 East, Fourth Principal Meridian, Forest County, State of Wisconsin as shown on the plat map herewith.

The original township subdivision survey of T39N, R13E was completed in 1865 by William E. Daugherty.

The corner positions recovered, restored and established by this survey are marked by the monument described in the map legend. The corner positions established were located to a minimum accuracy of 1 part in 5000. Each monumented corner is referenced to blazed scribed, painted and tagged bearing trees. Tie bearings to the bearing trees are magnetic and are not corrected for declination. The bearings between corner positions are based on a Global Positioning Network provided to Coleman Engineering Company by the U.S. Forest Service.

The field notes and a copy of the Plat of Survey are on file in the Forest Service Supervisor's office in Rhinelander, Wisconsin and the District Ranger's office at Eagle River, Wisconsin.

CORNERS RECOVERED OR RESTORED

1. Northeast Section Corner

Corner position restored in 1994 by William Cochrane R.L.S. No. 1107 and is on file in Forest County Register of Deeds Office as Document No. 156576.

Corner References:

Maple	12"	N34°E	26.78 feet
Maple	14"	S77°E	20.75 feet
Basswood	11"	S42°E	29.40 feet
Maple	13"	N80°W	18.36 feet
Steel Sign Post		East	1.00 feet



Stock No. 26273

2. East Quarter Corner

Corner position recovered and restored in 1994 by William Cochrane R.L.S. No. 1107 and is on file in Forest County Register of Deeds Office as Document No. 156581.

Corner References:

Cedar	9"	S73°E	35.60 feet
Cedar	11"	North	30.02 feet
Steel Sign Post		Southwest	1.00 feet

3. Southeast Section Corner

Corner position restored in 1994 by William Cochrane R.L.S. No. 1107 and is on file in Forest County Register of Deeds Office as Document No. 156586.

Corner References:

Cedar	13"	N35°E	25.09 feet
Cedar	13"	S86°E	24.72 feet
Steel Sign Post		Southwest	1.00 feet

No other accessories available.

4. South Quarter Corner

Corner position recovered and restored in 1994 by William Cochrane R.L.S. No. 1107 and is on file in Forest County Register of Deeds Office as Document No. 156585.

Corner References:

Spruce	4"	N62°E	105.50 feet
Spruce	7"	S54°E	77.24 feet
Steel Sign Post		West and alongside	

5. Southwest Section Corner

Corner position recovered and restored in 1994 by William Cochrane R.L.S. No. 1107 and is on file in Forest County Register of Deeds Office as Document No. 156584.

Corner References:

Maple	5"	N66°E	31.08 feet
Maple	3"	N73°W	28.17 feet
Aspen	4"	N03°W	34.90 feet
Steel Sign Post		North	1.00 feet



Stock No. 26273

6. West Quarter Corner

Corner position restored in 1994 by William Cochrane R.L.S. No. 1107 and is on file in Forest County Register of Deeds Office as Document No. 156580.

Corner References:

Aspen	4"	N11°E	19.48 feet
Aspen	4"	N76°W	22.15 feet
Steel Sign Post		South	1.00 feet

7. Northwest Section Corner

Corner position restored in 1995 by William Cochrane R.L.S. No. 1107 and is on file in Forest County Register of Deeds Office as Document No. 158089.

Corner References:

Aspen	4"	N60°E	5.30 feet
Aspen	5"	S70°E	6.58 feet
Aspen	6"	N58°W	6.46 feet
Aspen	4"	N58°W	7.25 feet
Steel Sign Post		South	0.50 feet

8. North Quarter Corner

Corner position restored in 1994 by William Cochrane R.L.S. No. 1107 and is on file in Forest County Register of Deeds Office as Document No. 156575.

Corner References:

Maple	9"	North	11.38 feet
Maple	9"	S48°W	17.25 feet
Steel Sign Post		South	1.00 feet

CORNERS ESTABLISHED1. Center-North One-Sixteenth Corner

Set 1" x 36" aluminum monument on line and at the mid-point between the North Quarter Corner and the Center of Section.

Corner References:

Sugar	6"	S35°W	11.79 feet
Sugar	9"	N53°W	22.62 feet
Steel Sign Post		Northwest	0.58 feet



Stock No. 26273

2. Center of Section

Set 1" x 36" aluminum monument at the intersection of the North-South and East-West Quarter lines.

Corner References:

Sugar	6"	West	25.15 feet
Sugar	8"	N20°W	43.03 feet
Steel Sign Post		Southwest	1.11 feet

3. East One-Sixteenth Corner between Sections 21 and 28

Set 1" x 36" aluminum monument on line and at the mid-point between the North Quarter Corner and the Northeast Corner of Section 28.

Corner References:

Sugar	9"	N67°E	11.50 feet
Sugar	6"	N34°W	12.68 feet
Steel Sign Post		Northwest	0.79 feet

4. Northeast One-Sixteenth Corner

Set 1" x 36" aluminum monument at the intersection of the North and East One-Sixteenth lines.

Corner References:

Cedar	10"	S72°W	36.30 feet
Black Ash	7"	N71°W	35.77 feet
Steel Sign Post		Southeast	1.43 feet

5. Center-East One-Sixteenth Corner

Set 1" x 36" aluminum monument on line and at the mid-point between the East Quarter Corner and the Center of Section.

Corner References:

Maple	10"	N77°E	26.87 feet
Maple Clump	6"	N14°W	31.08 feet
Steel Sign Post		Southwest	1.02 feet

6. Southeast One-Sixteenth Corner

Set 1" x 60" aluminum monument at the intersection of South and East One-Sixteenth lines.

Corner References:

Cedar	10"	S28°E	39.71 feet
Cedar	12"	S25°W	24.59 feet
Steel Sign Post		Southwest	1.00 feet

Stock No. 26273

7. South One-Sixteenth Corner between Sections 27 and 28

Set 1" x 60" aluminum monument on line and at the mid-point between the East Quarter Corner and the Southeast Corner of Section 28.

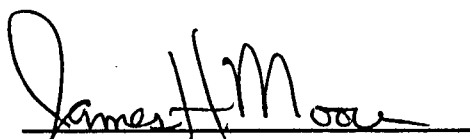
Corner References:

Cedar	7"	S06°W	36.34 feet
Cedar	10"	S70°W	45.95 feet
Steel Sign Post		Southwest	0.80 feet

SURVEYOR'S AFFIDAVIT

I, James H. Moore, a registered Land Surveyor in the State of Wisconsin, hereby certify that I have surveyed and sub-divided Section 28, Township 39 North, Range 13 East, Fourth Principal Meridian, Forest County, State of Wisconsin.

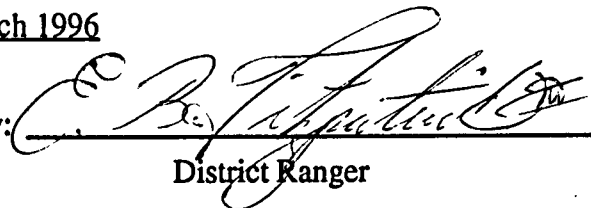
The plat map and survey notes herewith are a correct representation of the land surveyed and subdivided. I have surveyed and sub-divided said section in accordance with the rules for the Survey of Public Lands and the Statutes of the State of Wisconsin.



Land Surveyor

R.L.S. State of WisconsinCertificate S-1641Date of Survey March 1996

Survey requested by:


District Ranger

8/20/97
Date

