



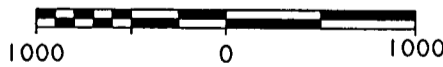
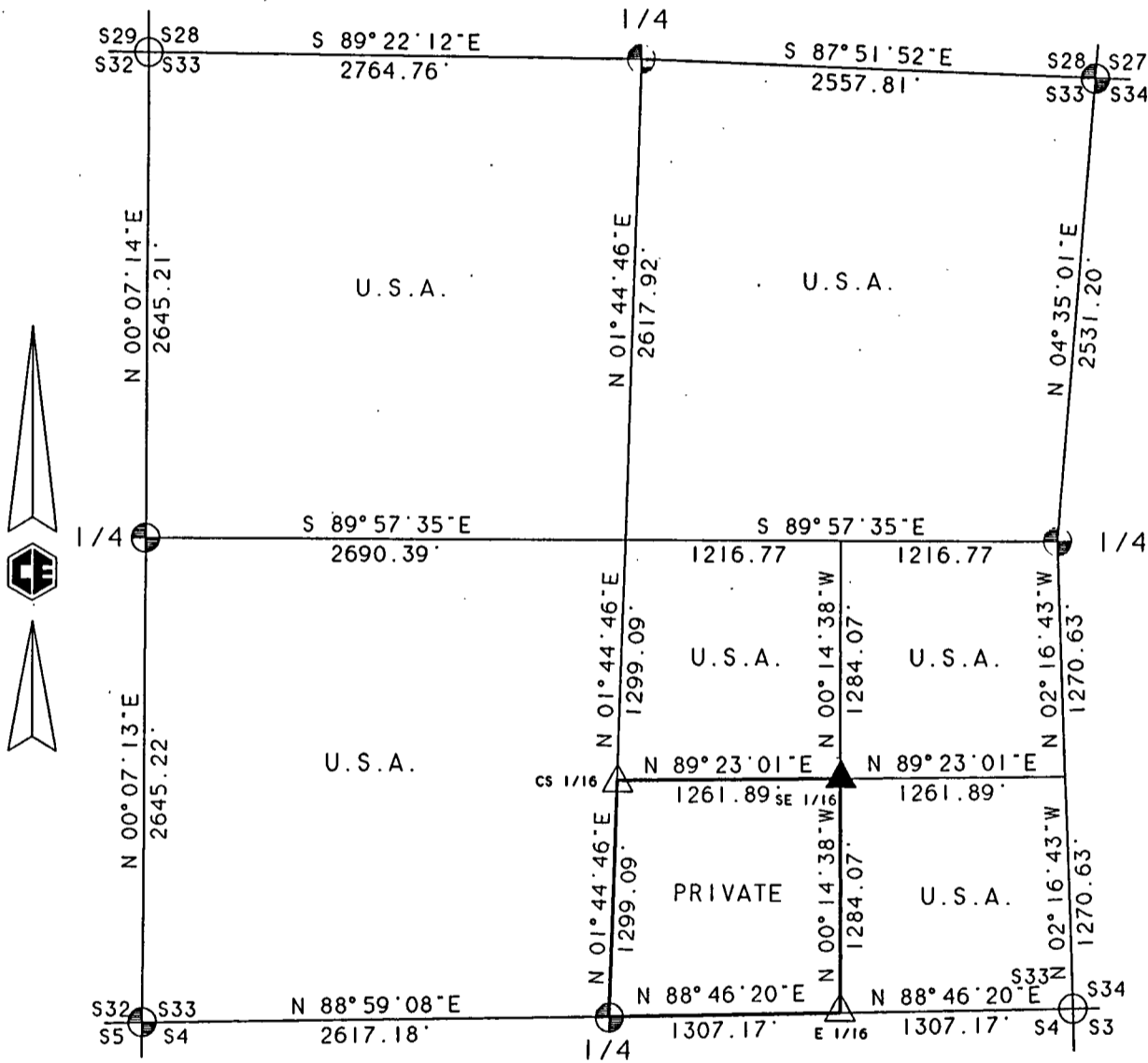
Stock No. 26273

PLAT OF SURVEY FOR CERTIFIED LAND CORNER RESTORATION AND ESTABLISHMENT

BEING THE CORNERS FOR THE SW 1/4 OF THE SE 1/4
AND THE CORNERS ON THE PERIMETER OF THE SECTION.

SECTION 33. TOWNSHIP 39 NORTH. RANGE 13 EAST.

COUNTY OF FOREST. STATE OF WISCONSIN



GRAPHIC SCALE - 1" = 1000'

FOREST CO SURVEYOR
FILE # 391333-19970820
DATE _____ BY _____

LEGEND

- 2 1/2 INCH DIAMETER GALVANIZED IRON PIPE MONUMENT WITH BRASS CAP
- △ 1 INCH DIAMETER ALUMINUM PIPE MONUMENT 36 INCHES LONG WITH AN ALUMINUM CAP
- ▲ 1 INCH DIAMETER ALUMINUM PIPE MONUMENT 60 INCHES LONG WITH AN ALUMINUM CAP
- 2 1/2 INCH DIAMETER ALUMINUM PIPE MONUMENT 36 INCHES LONG WITH AN ALUMINUM CAP
- ⊕ 2 1/2 INCH DIAMETER ALUMINUM PIPE MONUMENT 60 INCHES LONG WITH AN ALUMINUM CAP
- BOUNDARY LINE MARKED TO FOREST SERVICE STANDARD



Stock No. 26273

SURVEY NOTES

Section 33, T39N - R13E

This survey was made by Coleman Engineering Company for the U.S. Department of Agriculture - Forest Service under Contract No. 53-56A6-4-00936 for the purpose of restoring and establishing corners on the perimeter of Section 33 and interior corners for subdivision of Section 33, and for locating and marking boundaries of U.S. Government lands along the perimeter and within Section 33, Township 39 North, Range 13 East, Fourth Principal Meridian, Forest County, State of Wisconsin as shown on the plat map herewith.

The original Government Survey of the township line was done by Alfred Millard in June 1858. The subdivision survey of T39N, R13E was completed in 1865 by William E. Daugherty.

The corner positions recovered, restored and established by this survey are marked by the monument described in the map legend. The corner positions established were located to a minimum accuracy of 1 part in 5000. Each monumented corner is referenced to blazed scribed, painted and tagged bearing trees. Tie bearings to the bearing trees are magnetic and are not corrected for declination. The bearings between corner positions are based on a Global Positioning Network provided to Coleman Engineering Company by the U.S. Forest Service.

The field notes and a copy of the Plat of Survey are on file in the Forest Service Supervisor's office in Rhinelander, Wisconsin and the District Ranger's office at Eagle River, Wisconsin.

CORNERS RECOVERED OR RESTORED

1. Northeast Section Corner

Corner position restored in 1994 by William Cochrane R.L.S. 1107, and is on file in Forest County Register of Deeds office as Document No. 156586.

Corner References:

Cedar	13"	N35°E	25.09 feet
Cedar	13"	S86°E	24.72 feet
Steel Sign Post		North	1.00 feet



Stock No. 26273

2. East Quarter Corner

Corner position recovered in 1994 by William Cochrane R.L.S. 1107, and is on file in Forest County Register of Deeds office as Document No. 156593.

Corner References:

Tamarack	2"	N71°E	37.33 feet
Spruce	3"	S16°W	41.47 feet
Steel Sign Post		Southwest	0.25 feet

3. Southeast Section Corner

Corner position recovered in 1994 by William Cochrane R.L.S. 1107, and is on file in Forest County Register of Deeds office as Document No. 156598.

Existing Corner References:

Cedar	12"	S52°E	32.00 feet
Cedar	15"	N23°W	29.40 feet

New Corner References:

Yellow Birch	7"	N80°E	44.39 feet
Maple	7"	S32°W	41.63 feet
Steel Sign Post		Southeast	Alongside

4. South Quarter Corner

Corner position recovered in 1994 by William Cochrane R.L.S. 1107, and is on file in Forest County Register of Deeds office as Document No. 156597.

Existing Corner References:

Cedar	9"	N32°E	29.30 feet
-------	----	-------	------------

New Corner References:

Cedar	9"	S60°E	35.04 feet
Steel Sign Post		South	0.50 feet

5. East One-Sixteenth Corner between Sections 33 and 4

I, James Moore R.L.S. 1641 recovered a 1" stamped aluminum monument set by the U.S. Forest Service on line and at the mid-point between the Southeast Section Corner and the South Quarter Corner.

6. Southwest Section Corner

Corner position recovered and restored in 1994 by William Cochrane R.L.S. 1107, and is on file in Forest County Register of Deeds office as Document No. 156596.

Corner References:

Cedar	13"	N32°E	14.15 feet
Cedar	8"	S40°E	34.41 feet
Cedar	10"	S63°W	27.62 feet
Cedar	13"	N43°W	22.68 feet
Steel Sign Post		South	1.00 feet



Stock No. 26273

7. West Quarter Corner

Corner position restored in 1994 by William Cochrane R.L.S. 1107, and is on file in Forest County Register of Deeds office as Document No. 156592.

Corner References:

Spruce	14"	N73°W	76.75 feet
Spruce	6"	N32°W	61.30 feet
Springhole (Pond)		East	12.00 feet
Steel Sign Post		Southwest	1.00 feet

8. Northwest Section Corner

Corner position recovered and restored in 1988 by William Cochrane R.L.S. 1107, and is on file in Forest County Register of Deeds office as Document No. 156585.

Corner References:

Maple	5"	N66°E	31.08 feet
Maple	3"	N73°W	28.17 feet
Aspen	4"	N03°W	34.90 feet
Steel Sign Post		North	1.00 feet

9. North Quarter Corner

Corner position recovered and restored in 1994 by William Cochrane R.L.S. 1107, and is on file in Forest County Register of Deeds office as Document No. 156584.

Corner References:

Spruce	4"	N62°E	105.50 feet
Spruce	7"	S54°E	77.24 feet
Steel Sign Post		West	Alongside

CORNERS ESTABLISHED1. Center-South One-Sixteenth Corner of Section 33

Set a stamped 1" x 36" aluminum monument online and at the mid-point between the Center of Section and the South Quarter Corner.

Corner References:

Sugar	4"	S65°E	25.75 feet
Sugar	4"	S06°E	24.75 feet
Steel Sign Post		Northwest	0.92 feet



Stock No. 26273

2. Southeast One-Sixteenth Corner of Section 33

Set a stamped 1" x 60" aluminum monument at the intersection of the South and East One-Sixteenth lines.

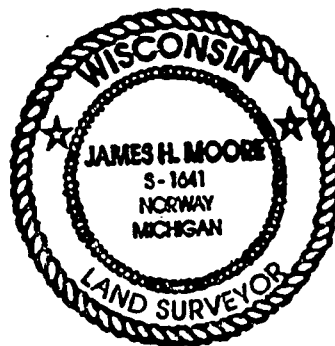
Corner References:

Cedar	5"	S80°E	38.53 feet
Cedar	7"	N22°W	70.10 feet
Steel Sign Post		Northeast	1.13 feet

SURVEYOR'S AFFIDAVIT

I, James H. Moore, a registered Land Surveyor in the State of Wisconsin, hereby certify that I have surveyed and sub-divided Section 33, Township 39 North, Range 13 East, Fourth Principal Meridian, Forest County, State of Wisconsin.

The plat map and survey notes herewith are a correct representation of the land surveyed and subdivided. I have surveyed and sub-divided said section in accordance with the rules for the Survey of Public Lands and the Statutes of the State of Wisconsin.



James H. Moore

Land Surveyor

R.L.S. State of WisconsinCertificate S-1641Date of Survey March 1996

Survey requested by

E. B. T. [Signature]
District Ranger

8/20/97

Date

