



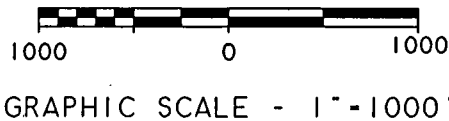
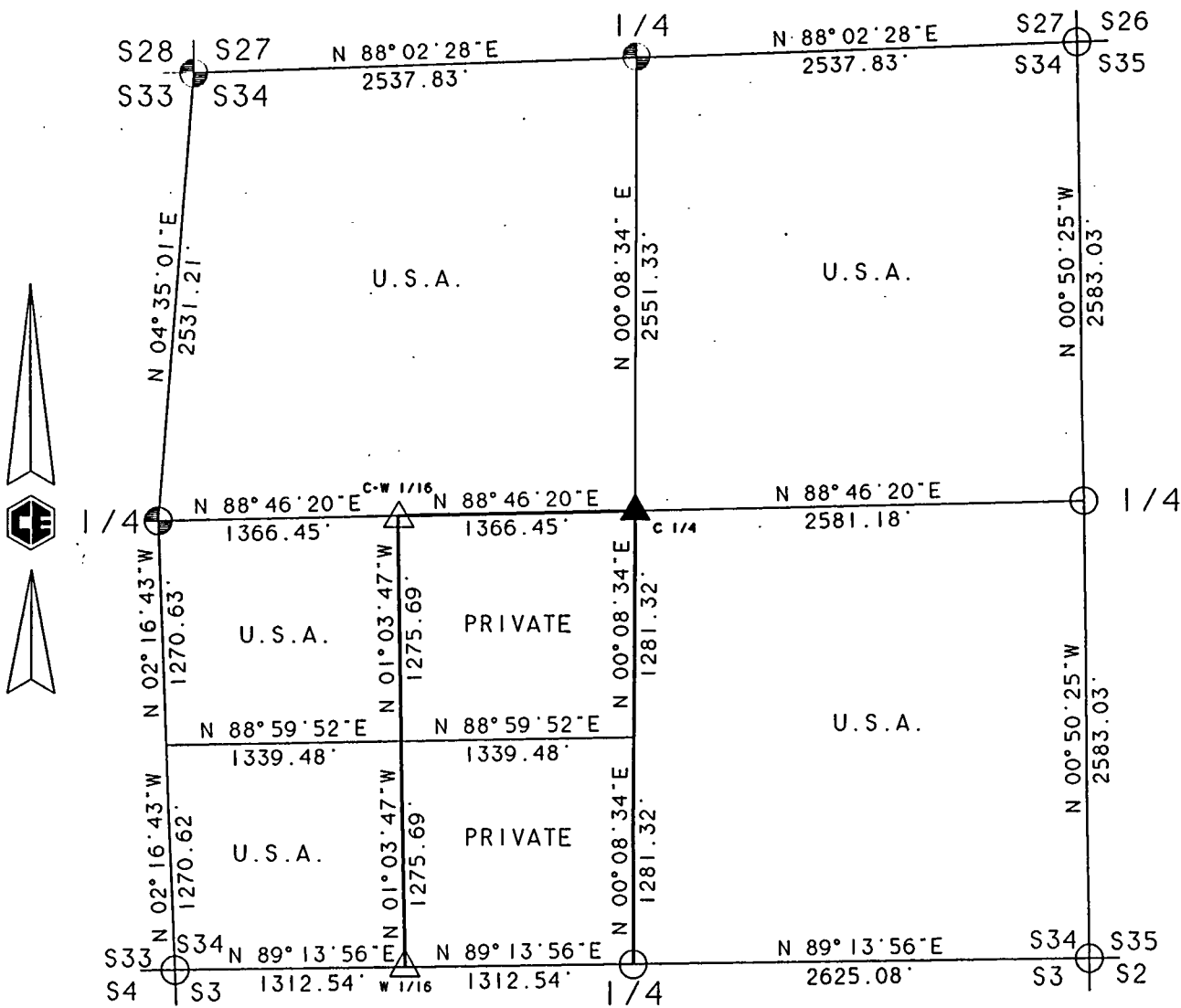
Stock No. 26273

PLAT OF SURVEY FOR CERTIFIED LAND CORNER RESTORATION AND ESTABLISHMENT

BEING THE CORNERS FOR THE E 1/2 OF THE SW 1/4
AND THE CORNERS ON THE PERIMETER OF THE SECTION

SECTION 34. TOWNSHIP 39 NORTH. RANGE 13 EAST.

COUNTY OF FOREST. STATE OF WISCONSIN



FOREST CO SURVEYOR
FILE # 391334-19970820
DATE _____ BY _____

LEGEND

- 2 1/2 INCH DIAMETER GALVANIZED IRON PIPE MONUMENT WITH BRASS CAP
- △ 1 INCH DIAMETER ALUMINUM PIPE MONUMENT 36 INCHES LONG WITH AN ALUMINUM CAP.
- ▲ 1 INCH DIAMETER ALUMINUM PIPE MONUMENT 60 INCHES LONG WITH AN ALUMINUM CAP
- 2 1/2 INCH DIAMETER ALUMINUM PIPE MONUMENT 36 INCHES LONG WITH AN ALUMINUM CAP
- ⊕ 2 1/2 INCH DIAMETER ALUMINUM PIPE MONUMENT 60 INCHES LONG WITH AN ALUMINUM CAP
- BOUNDARY LINE MARKED TO FOREST SERVICE STANDARD



Stock No. 26273

SURVEY NOTESSection 34, T39N - R13E

This survey was made by Coleman Engineering Company for the U.S. Department of Agriculture - Forest Service as Contract No. 53-56A6-4-00936 for the purpose of restoring and establishing corners on the perimeter of Section 34 and interior corners for subdivision of Section 34, and for locating and marking boundaries of U.S. Government lands along the perimeter and within Section 34, Township 39 North, Range 13 East, Fourth Principal Meridian, Forest County, State of Wisconsin as shown on the plat map herewith.

The original Government Survey of the township line was done by Alfred Millard in June 1858 and the subdivision of T39N, R13E was completed in 1865 by William E. Daugherty.

The corner positions recovered, restored and established by this survey are marked by the monument described in the map legend. The corner positions established were located to a minimum accuracy of 1 part in 5000. Each monumented corner is referenced to blazed scribed, painted and tagged bearing trees. Tie bearings to the bearing trees are magnetic and are not corrected for declination. The bearings between corner positions are based on a Global Positioning Network provided to Coleman Engineering Company by the U.S. Forest Service.

The field notes and a copy of the Plat of Survey are on file in the Forest Service Supervisor's office in Rhinelander, Wisconsin and the District Ranger's office at Eagle River, Wisconsin.

CORNERS RECOVERED OR RESTORED1. Northeast Section Corner

Corner position restored in 1994 by William Cochrane R.L.S. 1107 and is on file in the Forest County Register of Deeds office as Document #156588.

Corner References:

Spruce	15"	N67°E	4.83 feet
Spruce	12"	S04°E	31.08 feet
White Pine	11"	S65°W	43.41 feet
White Pine	20"	N54°W	39.40 feet
Steel Sign Post		North	1.00 feet



Stock No. 26273

2. East Quarter Corner

Corner position restored in 1994 by William Cochrane R.L.S. 1107 and is on file in the Forest County Register of Deeds office as Document #156594.

Corner References:

Balsam	9"	S80°E	31.10 feet
Spruce	7"	S07°W	24.11 feet
Steel Sign Post		North	1.00 feet

3. Southeast Section Corner

Corner position recovered in 1994 by William Cochrane R.L.S. 1107 and is on file in the Forest County Register of Deeds office as Document #156600.

New Corner References:

Balsam	9"	N74°E	65.70 feet
Maple	9"	S34°E	28.87 feet
Maple	12"	S30°W	59.69 feet
Maple	13"	N70°W	43.68 feet
Steel Sign Post		Northwest	0.25 feet

4. South Quarter Corner

Corner position restored in 1994 by William Cochrane R.L.S. 1107 and is on file in the Forest County Register of Deeds office as Document #156599.

Corner References:

Hemlock	12"	S63°E	24.07 feet
Hemlock	14"	S35°W	26.42 feet
Steel Sign Post		North	1.00 feet

5. Southwest Section Corner

Corner position recovered in 1994 by William Cochrane R.L.S. 1107 and is on file in the Forest County Register of Deeds office as Document #156598.

Existing Corner References:

Cedar	12"	S52°E	32.00 feet
Cedar	15"	N23°W	29.40 feet

New Corner References:

Yellow Birch	7"	N80°E	44.39 feet
Maple	7"	S32°W	41.63 feet
Steel Sign Post		Southeast	Alongside



Stock No. 26273

6. West Quarter Corner

Corner position recovered in 1994 by William Cochrane R.L.S. 1107 and is on file in the Forest County Register of Deeds office as Document #156593.

New Corner References:

Tamarack	2"	N71°E	37.83 feet
Spruce	3"	S16°W	41.47 feet
Steel Sign Post		Southwest	0.25 feet

7. Northwest Section Corner

Corner position restored in 1994 by William Cochrane R.L.S. 1107 and is on file in the Forest County Register of Deeds office as Document #156586.

Corner References:

Cedar	13"	N35°E	25.09 feet
Cedar	13"	S86°E	24.72 feet
Steel Sign Post		North	1.00 feet

No other accessories available.

8. North Quarter Corner

Corner position restored in 1994 by William Cochrane R.L.S. 1107 and is on file in the Forest County Register of Deeds office as Document #156587.

Corner References:

Cedar	10"	S71°E	11.70 feet
Black Ash	8"	S27°W	17.12 feet
Steel Sign Post		South	1.00 feet

CORNERS ESTABLISHED1. Center-West One-Sixteenth Corner

Set a stamped 1" x 36" aluminum monument on line and at the mid-point between the West Quarter Corner and Center of Section.

Corner References:

Cedar	6"	N24°E	20.01 feet
Cedar	7"	N49°W	38.40 feet
Steel Sign Post		Northwest	1.25 feet



Stock No. 26273

2. West One-Sixteenth Corner between Sections 34 and 3

Set a stamped 1" x 36" aluminum monument on line and at the mid-point between the Southwest Section Corner and the South Quarter Corner.

Corner References:

Cedar	6"	S80°W	20.47 feet
Maple	8"	S17°E	11.94 feet
Steel Sign Post		South	1.19 feet

3. Center of Section 34

Set a stamped 1" x 60" aluminum monument at the intersection of the North-South and East-West Quarter lines.

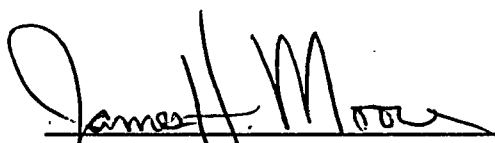
Corner References:

Black Ash	4"	N06°E	18.51 feet
Cedar	7"	S87°W	48.90 feet
Steel Sign Post		Northeast	1.40 feet

SURVEYOR'S AFFIDAVIT

I, James H. Moore, a registered Land Surveyor in the State of Wisconsin, hereby certify that I have surveyed and sub-divided Section 34, Township 39 North, Range 13 East, Fourth Principal Meridian, Forest County, State of Wisconsin.

The plat map and survey notes herewith are a correct representation of the land surveyed and subdivided. I have surveyed and sub-divided said section in accordance with the rules for the Survey of Public Lands and the Statutes of the State of Wisconsin.


Land Surveyor

R.L.S. State of Wisconsin

Certificate S-1641

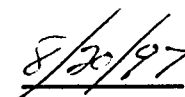
Date of Survey March 1996

Survey requested by:


District Ranger

Date




8/20/97

Sheet 5 of 5

