

Stock No. 26273

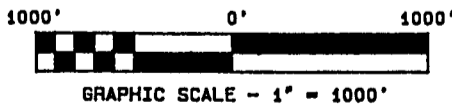
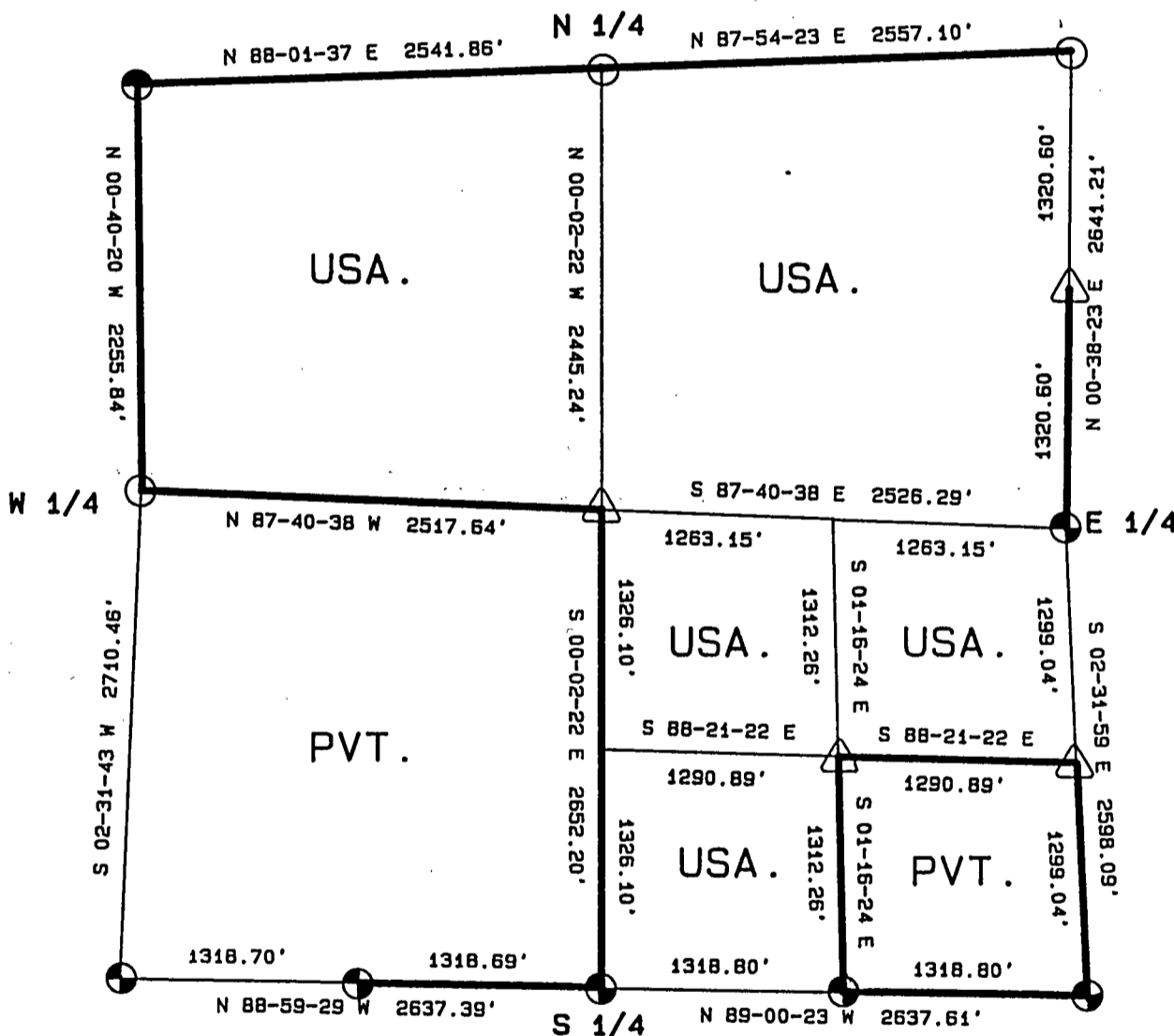
FOREST CO SURVEYOR  
FILE # 391413-19890504  
DATE \_\_\_\_\_ BY \_\_\_\_\_

# PLAT OF SURVEY FOR CERTIFIED LAND CORNER RESTORATION AND ESTABLISHMENT

BEING THE CORNERS FOR THE N 1/2 OF THE SECTION  
THE N 1/2 OF THE SE 1/4 AND THE SW 1/4 OF THE SE 1/4.

## SECTION 13, TOWNSHIP 39 NORTH, RANGE 14 EAST

COUNTY OF FOREST, STATE OF WISCONSIN



### LEGEND

- 2 1/2 INCH DIAMETER ALUMINUM PIPE MONUMENT 36 INCHES LONG WITH AN ALUMINUM CAP.
- △ 1 INCH DIAMETER ALUMINUM PIPE MONUMENT 36 INCHES LONG WITH AN ALUMINUM CAP.
- 2 1/2 INCH DIAMETER GALVANIZED IRON PIPE MONUMENT 60 INCHES LONG WITH BRASS CAP.
- ⊕ 2 1/2 INCH DIAMETER GALVANIZED IRON PIPE MONUMENT 36 INCHES LONG WITH BRASS CAP.
- BOUNDARY LINE MARKED TO FOREST SERVICE STANDARD.

Stock No. 26273

T39N R14E - SECTION 13

page 2 of 5

SURVEY NOTES

This plat of survey for Section 13, Township 39 North, Range 14 East is the product of a Photogrammetric Project linked with Global Satellite Positioning procedures to establish the co-ordinate values used as control to recover and restore lost Section and Quarter Section Corners and to establish positions for Sixteenth and Property Corners within the Sections in this project area.

The 10 G.P.S. Stations were assigned State Plane Co-ordinate Values. The values were then transferred to the target locations for ground control through photogrammetric bridging.

All bearings are geodetic bearings based on the Wisconsin North Zone Lambert Projection and have been transferred to the boundary lines within this project using a Wild North Seeking Gyro. All distances are geodetic grid distances.

This Survey was made by the U.S. Department of Agriculture, Forest Service, for the purpose of recovering, restoring, establishing, marking and perpetuating the corners and boundary lines of U.S. Government Land on the sections within this project area.

The Original Government Survey of this township was made in 1865 by William E. Daugherty.

The field notes of this survey and a copy of this and the remaining sections in this project area are on file in the Forest Supervisor's Office at Rhinelander, Wisconsin, and the District Ranger's Office at Florence, Wisconsin.

CORNERS RECOVERED AND RESTORED1. Southeast Section Corner

In 1975, Jean Resvick restored the corner position using natural feature calls and the line between the Meander Corner to the South and the Quarter Corner to the North.

1975 Corner References recovered:

B. Spruce	11"	S29°E	45.16 feet
Balsam(Blowdown)	8"	S03°E	43.65 feet

The above bearing trees were cut down for the Air Photo Project.

New Corner References:

W. Birch	10"	S40°E	78.30 feet
W. Birch	10"	S03°E	55.95 feet
Tamarack	8"	N28°W	85.36 feet
Steel Sign Post		SW	1.00 feet

2. South Quarter Corner

In 1975, Jean Resvick restored the corner position at mid-point and on line between the Southwest Section Corner and the Southeast Section Corner.

1975 Corner References recovered:

R. Pine	8"	S19°E	38.38 feet
R. Pine	6"	S38°W	36.13 feet
Center Line of Road		North	10.00 feet

Monument is 0.80 feet below the surface of the road.

3. Southwest Section Corner

In 1975, Jean Resvick accepted the intersection of a T-Road South as the best available evidence for restoring the corner position.

1975 Corner References recovered:

B. Spruce	6"	N65°E	65.42 feet
R. Pine	12"	S40°W	91.28 feet
USGS Bench Mark		N36°E	25.99 feet

New Corner Reference:

Spruce	10"	N25°W	44.23 feet
--------	-----	-------	------------

Monument is 0.50 feet below the surface of the road.

Stock No. 26273

T39N R14E - SECTION 13

page 3 of 5

4. West Quarter Corner

In 1975, Jean Resvick restored the corner position in error. The corner position is now restored using bearing tree evidence of a 1929 survey by Melindy, and a fence corner. Melindy had restored the corner using original evidence.

## Corner References:

Basswood	12"	S03°E	32.30 feet
Y. Birch	4"	S38°E	27.00 feet
Resvick Monument		S50°W	98.29 feet
Steel Sign Post		NE	0.75 feet

5. Northwest Section Corner

In 1967, Jean Resvick restored the corner position by accepting a post point and original bearing tree evidence.

## 1967 Corner References recovered:

Spruce	6"	N63°E	22.75 feet
Spruce	4"	S03°W	9.65 feet

Both of the above bearing trees were cut down for the Air Photo Project.

Tamarack	4"	S69°E	40.40 feet
W. Birch	10"	N77°W	91.71 feet

## New Corner References:

Tamarack	3"	N68°E	47.95 feet
Maple	5"	N28°W	64.80 feet

6. North Quarter Corner

In 1970, Thomas Arnott, a local surveyor, restored the corner position at mid-point and on line between the Northwest and Northeast Section Corners.

## 1970 Corner References recovered:

Sugar	7"	S66°E	22.95 feet
Sugar	8"	S29°W	46.38 feet

Both of the above bearing trees were cut down for the Air Photo Project.

## New Corner References:

Ash	12"	N82°W	39.92 feet
Ash	10"	N43°E	51.41 feet
Steel Sign Post		NW	2.00 feet

7. Northeast Section Corner

In 1970, Thomas Arnott, a local surveyor, restored the corner position by accepting a fence corner and original bearing tree evidence.

## 1970 Corner References recovered:

Balsam	5"	S57°E	51.83 feet
B. Spruce(Dead)	6"	S60°W	34.49 feet
B. Spruce	6"	N85°W	39.41 feet

## New Corner References:

Balsam	5"	S04°E	49.87 feet
Steel Sign Post		NW	2.00 feet

8. East Quarter Corner

In 1974, William B. Cochrane restored the corner position from original bearing tree evidence.

## 1974 Corner References recovered:

R. Pine	20"	S23°E	11.52 feet
R. Pine	28"	S87°W	16.00 feet
Steel Sign Post		SW	0.50 feet

9. East Sixteenth Corner between Sections 13 and 24

In 1975, Jean Resvick established the corner position at mid-point and on line between the South Quarter Corner and the Southeast Section Corner.

## 1975 Corner References recovered:

R. Pine	6"	S17°E	21.24 feet
R. Pine	10"	S49°W	32.46 feet

Monument is 0.80 feet below the surface of the road.

Stock No. 26273

T39N R14E - SECTION 13

page 4 of 5

10. West Sixteenth Corner between Sections 13 and 24

In 1975, Jean Resvick established the corner position at mid-point and on line between the South Quarter Corner and the Southwest Section Corner.

1975 Corner References recovered:

Maple (Cut-down)	8"	N04°E	47.64 feet
Maple	6"	N33°W	54.62 feet

New Corner Reference:

Maple	6"	N05°E	62.88 feet
-------	----	-------	------------

Monument is 0.80 feet below the surface of the road.

CORNERS ESTABLISHED1. Center Quarter Corner

Corner position is established at the intersection of straight lines between opposing quarter corners on the perimeter of the section.

Corner References:

R. Pine	7"	N09°E	31.93 feet
Balsam	18"	N68°E	16.96 feet
Steel Sign Post		S42°E	1.05 feet

2. North Sixteenth Corner between Sections 13 and 18, Ranges 14 and 15 East

Corner position is established at mid-point and on line between the Northeast Section Corner and the East Quarter Corner.

Corner References:

Balsam	7"	N04°W	6.59 feet
Balsam	5"	N80°E	8.01 feet
Steel Sign Post		S45°W	0.95 feet

3. South Sixteenth Corner between Sections 13 and 18, Ranges 14 and 15 East

Corner position is established at mid-point and on line between the Southeast Section Corner and the East Quarter Corner.

Corner References:

R. Pine	6"	S60°E	7.91 feet
R. Pine	5"	S10°W	4.60 feet
Steel Sign Post		West	0.85 feet

4. Southeast Sixteenth Corner

Corner position is established at the intersection of straight lines between the opposing sixteenth corners on the perimeter of the Southeast Quarter of the Section.

Corner References:

W. Pine	7"	N16°W	16.91 feet
W. Spruce	7"	N49°E	36.00 feet
Steel Sign Post		East	1.10 feet

Stock No. 26273

T39N R14E - SECTION 13

page 5 of 5

SURVEYOR'S AFFIDAVIT

State of Wisconsin)  
County of Forest ) ss

I, William B. Cochrane, Land Surveyor, U.S.D.A. Forest Service, and a Registered Land Surveyor in the State of Wisconsin, hereby certify that I have surveyed and sub-divided Section 13, Township 39 North, Range 14 East, Fourth Principal Meridian, State of Wisconsin.

The plat map and survey notes herewith are a correct representation of the land surveyed and sub-divided. I have surveyed and sub-divided said section in accordance with the rules for the Survey of Public Lands and the Statutes of the State of Wisconsin.



William B. Cochrane  
Land Surveyor, U.S.D.A. Forest Service  
R.L.S. State of Wisconsin  
Certificate #S-1107

SURVEYOR'S AFFIDAVIT

State of Wisconsin)  
County of Forest ) ss

I, Gary L. Pisoni, Contract Land Surveyor for the U.S.D.A. Forest Service, and a Registered Land Surveyor in the State of Wisconsin, hereby certify that I have surveyed the boundary lines and monumented the Sixteenth Corners of Section 13, Township 39 North, Range 14 East, Fourth Principal Meridian, State of Wisconsin.

I have surveyed and monumented said Section in accordance with the rules for the Survey of Public Lands, the Statutes of the State of Wisconsin and the subdivision field notes computed by William B. Cochrane, Land Surveyor, U.S.D.A. Forest Service.

Gary L. Pisoni  
Land Surveyor  
R.L.S. State of Wisconsin  
Certificate #S-1634

Survey requested by; Edward [Signature] 3-22-88

District Ranger

Date

Date of Survey: 1988

