

Stock No. 26273

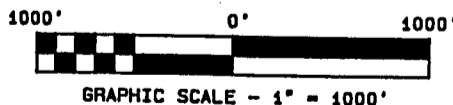
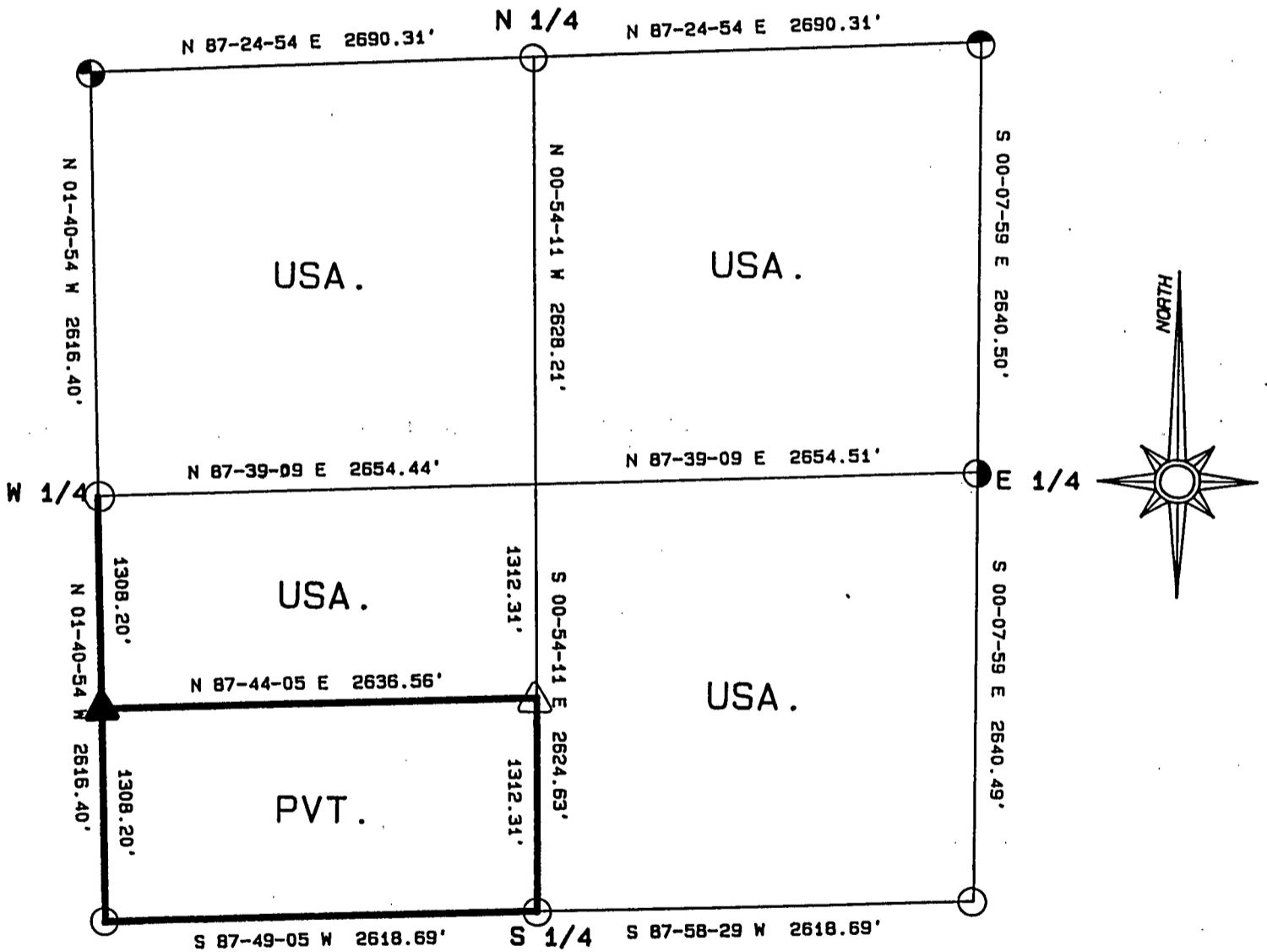
FOREST CO SURVEYOR  
FILE # 391416-19890504  
DATE \_\_\_\_\_ BY \_\_\_\_\_

PLAT OF SURVEY FOR CERTIFIED LAND CORNER  
RESTORATION AND ESTABLISHMENT

BEING THE CORNERS FOR THE N 1/2 OF THE SECTION, THE  
N 1/2 OF THE SW 1/4 AND THE SE 1/4 OF THE SECTION

SECTION 16, TOWNSHIP 39 NORTH, RANGE 14 EAST

COUNTY OF FOREST, STATE OF WISCONSIN



LEGEND

- 2 1/2 INCH DIAMETER ALUMINUM PIPE MONUMENT 36 INCHES LONG WITH AN ALUMINUM CAP.
- ◐ 2 1/2 INCH DIAMETER ALUMINUM PIPE MONUMENT 60 INCHES LONG WITH AN ALUMINUM CAP.
- △ 1 INCH DIAMETER ALUMINUM PIPE MONUMENT 36 INCHES LONG WITH AN ALUMINUM CAP.
- ▲ 1 INCH DIAMETER ALUMINUM PIPE MONUMENT 60 INCHES LONG WITH AN ALUMINUM CAP.
- ◑ 2 1/2 INCH DIAMETER GALVANIZED IRON PIPE MONUMENT 36 INCHES LONG WITH BRASS CAP.
- BOUNDARY LINE MARKED TO FOREST SERVICE STANDARD.
- ◒ 2 1/2 INCH DIAMETER GALVANIZED IRON PIPE MONUMENT 60 INCHES LONG WITH BRASS CAP.

Stock No. 26273

T39N R14E - SECTION 16

page 2 of 4

SURVEY NOTES

This plat of survey for Section 16, Township 39 North, Range 14 East is the product of a Photogrammetric Project linked with Global Satellite Positioning procedures to establish the co-ordinate values used as control to recover and restore lost Section and Quarter Section Corners and to establish positions for Sixteenth and Property Corners within the Sections in this project area.

The 10 G.P.S. Stations were assigned State Plane Co-ordinate Values. The values were then transferred to the target locations for ground control through photogrammetric bridging.

All bearings are geodetic bearings based on the Wisconsin North Zone Lambert Projection and have been transferred to the boundary lines within this project using a Wild North Seeking Gyro. All distances are geodetic grid distances.

This Survey was made by the U.S. Department of Agriculture, Forest Service, for the purpose of recovering, restoring, establishing, marking and perpetuating the corners and boundary lines of U.S. Government Land on the sections within this project area.

The Original Government Survey of this township was made in 1865 by William E. Daugherty.

The field notes of this survey and a copy of this and the remaining sections in this project area are on file in the Forest Supervisor's Office at Rhinelander, Wisconsin, and the District Ranger's Office at Florence, Wisconsin.

CORNERS RECOVERED AND RESTORED1. Northeast Section Corner.

Corner position recovered as restored by William Cochrane in 1977 using a 6"x6" wood post and original bearing tree evidence.

The 1977 corner references were cut down for the air photo project.

New Corner references:

Cedar	10"	North	53.50 feet
Cedar	11"	S48°E	37.53 feet
Cedar	12"	S84°W	50.57 feet
Cedar	11"	N30°W	36.01 feet
Steel Sign post		Northeast	2.00 feet

2. East Quarter Corner.

Corner position restored at midpoint and on line between the Northeast and Southeast Section Corners.

Note: Corner falls in beaver pond we set reference monument.

Corner references:

Aluminum monument		S60°E	188.21 feet
-------------------	--	-------	-------------

References to reference monument:

Tamarack	13"	N43°E	36.29 feet
Tamarack	12"	N35°W	65.05 feet
Steel sign post		Southwest	1.00 feet

3. Southeast Section Corner.

Corner position restored in center of Forest Road 2168 and creek calls to the East.

Corner references:

Spruce	10"	S33°E	28.71 feet
Spruce	9"	S52°W	36.56 feet
Steel sign post		North	24.00 feet

Stock No. 26273

## T39N R14E SECTION 16

page 3 of 4

4. South Quarter Corner.

Corner position restored at midpoint between the Southeast and Southwest Section Corners and in the center line of Forest Road 2168.

Corner references:

R. Pine	7"	S20°E	30.05 feet
R. Pine	7"	S63°W	64.13 feet
Steel sign post		North	23.50 feet

5. Southwest Section Corner.

Corner position restored at single proportionate measurement between the Section Corners to the East and West and center line of Forest Road 2168.

Corner references:

R. Pine	18"	N37°E	38.08 feet
R. Pine	6"	S06°E	39.33 feet
R. Pine	6"	S37°W	26.53 feet
Steel sign post		South	20.00 feet

6. West Quarter Corner.

Corner position restored at midpoint and on line between the Northwest and Southwest Section Corners.

Corner references:

Cherry	8"	N30°E	10.70 feet
Basswood	13"	N52°W	27.08 feet
Steel sign post		North	1.00 feet

7. North Quarter Corner.

Corner position restored at midpoint and on line between the Southwest and Southeast Section Corners.

Corner References:

High point on NE side of 10' high ledge rock outcropping 28'x36'		N10°E	267.62 feet
River Bank		East	40.00 feet
Steel sign post		South	1.00 feet

8. Northwest Section Corner.

Corner position recovered as restored by William Cochrane in 1976 using a 4"x4" wood post with two older post alongside.

Corner references recovered:

Cedar	12"	S48½E	62.18 feet
Maple	8"	N51°W	22.76 feet

New Corner references:

Aspen	4"	S05°W	36.81 feet
Maple	8*	N73°E	48.51 feet
Steel sign post		Northwest	0.50 feet

## CORNERS ESTABLISHED

1. Center-South Sixteenth Corner.

Corner position established at midpoint and on line between the Center-Quarter and the South Quarter Corners.

Corner references:

Cedar	15"	N18°W	82.49 feet
Spruce	11"	N50°E	22.50 feet
Steel sign post		West	1.90 feet

2. South Sixteenth Corner between Sections 16 and 17.

Corner position established at midpoint and on line between the West Quarter Corner and the Southwest Section Corner.

Corner references:

Cedar	8"	S66°E	41.12 feet
Cedar	8"	N08°W	40.38 feet
wood post		S71°E	33.90 feet
Steel sign post		West	1.35 feet

Stock No. 26273

T39N R14E SECTION 16

page 4 of 4

SURVEYOR'S AFFIDAVIT

State of Wisconsin)  
County of Forest ) ss

I, William B. Cochrane, Land Surveyor, U.S.D.A. Forest Service, and a Registered Land Surveyor in the State of Wisconsin, hereby certify that I have surveyed and sub-divided Section 16, Township 39 North, Range 14 East, Fourth Principal Meridian, State of Wisconsin.

The plat map and survey notes herewith are a correct representation of the land surveyed and sub-divided. I have surveyed and sub-divided said section in accordance with the rules for the Survey of Public Lands and the Statutes of the State of Wisconsin.



*William B. Cochrane*  
Land Surveyor, U.S.D.A. Forest Service  
R.L.S. State of Wisconsin  
Certificate #S-1107

SURVEYOR'S AFFIDAVIT

State of Wisconsin)  
County of Forest ) ss

I, Gary L. Pisoni, Contract Land Surveyor for the U.S.D.A. Forest Service, and a Registered Land Surveyor in the State of Wisconsin, hereby certify that I have surveyed the boundary lines and monumented the Sixteenth Corners of Section 16, Township 39 North, Range 14 East, Fourth Principal Meridian, State of Wisconsin.

I have surveyed and monumented said Section in accordance with the rules for the Survey of Public Lands, the Statutes of the State of Wisconsin and the subdivision field notes computed by William B. Cochrane, Land Surveyor, U.S.D.A. Forest Service.

*Gary L. Pisoni*  
Land Surveyor  
R.L.S. State of Wisconsin  
Certificate #S-1634

Survey requested by: *Edward [Signature]* District Ranger  
Date: *3-22-89*

Date of Survey: 1988

