

Stock No. 26273

FOREST CO SURVEYOR
 FILE # 391419-19890412
 DATE _____ BY _____

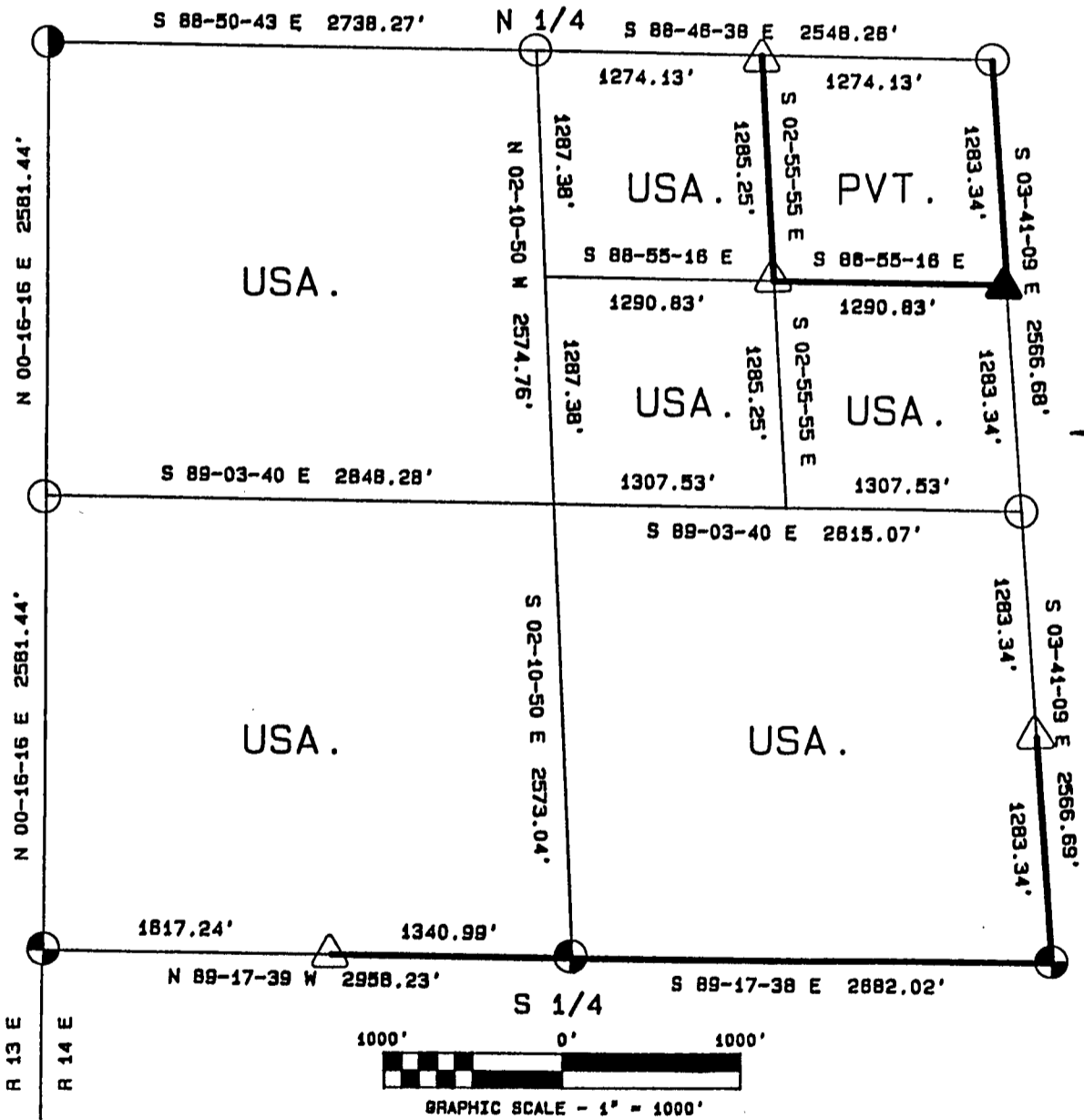
page 1 of 5

PLAT OF SURVEY FOR CERTIFIED LAND CORNER
 RESTORATION AND ESTABLISHMENT

BEING THE CORNERS FOR THE NW 1/4, THE NW 1/4 AND S 1/2 OF THE NE 1/4,
 AND THE SOUTH HALF OF THE SECTION

SECTION 19, TOWNSHIP 39 NORTH, RANGE 14 EAST

COUNTY OF FOREST, STATE OF WISCONSIN



LEGEND

- 2 1/2 INCH DIAMETER ALUMINUM PIPE MONUMENT 36 INCHES LONG WITH AN ALUMINUM CAP.
- ◐ 2 1/2 INCH DIAMETER ALUMINUM PIPE MONUMENT 60 INCHES LONG WITH AN ALUMINUM CAP.
- △ 1 INCH DIAMETER ALUMINUM PIPE MONUMENT 36 INCHES LONG WITH AN ALUMINUM CAP.
- ▲ 1 INCH DIAMETER ALUMINUM PIPE MONUMENT 60 INCHES LONG WITH AN ALUMINUM CAP.
- ◑ 2 1/2 INCH DIAMETER GALVANIZED IRON PIPE MONUMENT 36 INCHES LONG WITH BRASS CAP.
- BOUNDARY LINE MARKED TO FOREST SERVICE STANDARD.

Stock No. 26273

T39N R14E - SECTION 19

page 2 of 5

SURVEY NOTES

This plat of survey for Section 19, Township 39 North, Range 14 East is the product of a Photogrammetric Project linked with Global Satellite Positioning procedures to establish the co-ordinate values used as control to recover and restore lost Section and Quarter Section Corners and to establish positions for Sixteenth and Property Corners within the Sections in this project area.

The 10 G.P.S. Stations were assigned State Plane Co-ordinate Values. The values were then transferred to the target locations for ground control through photogrammetric bridging.

All bearings are geodetic bearings based on the Wisconsin North Zone Lambert Projection and have been transferred to the boundary lines within this project using a Wild North Seeking Gyro. All distances are geodetic grid distances.

This Survey was made by the U.S. Department of Agriculture, Forest Service, for the purpose of recovering, restoring, establishing, marking and perpetuating the corners and boundary lines of U.S. Government Land on the sections within this project area.

The Original Government Survey of this township was made in 1865 by William E. Daugherty.

The field notes of this survey and a copy of this and the remaining sections in this project area are on file in the Forest Supervisor's Office at Rhinelander, Wisconsin, and the District Ranger's Office at Florence, Wisconsin.

CORNERS RECOVERED AND RESTORED1. Northeast Section Corner

Corner position is restored at the intersection of F.R.#2168 and F.R.#2444.

Corner References:

Maple	10"	N54°E	61.80 feet
Ash	14"	S70°E	56.02 feet
Hemlock	9"	S 1°E	60.80 feet
Maple	3"	N60°W	58.22 feet
Steel Sign Post		South	20.00 feet

2. East Quarter Corner

Corner position is restored at proportionate distance and on line between the Northeast and Southeast Section Corners.

Corner References:

Aspen	14"	N40°W	23.38 feet
Aspen	16"	N78°E	9.94 feet
Steel Sign Post		South	1.00 feet

3. Southeast Section Corner

In 1965, Jean Resvick restored the corner position from original bearing tree evidence.

1965 Corner References Recovered:

Sugar	16"	N36°E	32.39 feet
Sugar	8"	S12°E	11.55 feet
Sugar	8"	S71°W	23.04 feet
Sugar(snag)		N20°W	31.00 feet
Steel Sign Post		South	2.00 feet

New Corner Reference;

Maple	13"	N 2°W	23.57 feet
-------	-----	-------	------------

Stock No. 26273

T39N R14E - SECTION 19

page 3 of 5

4. South Quarter Corner

In 1982, William B. Cochrane restored the corner position at proportionate distance and on line between the Southeast and Southwest Section Corners.

1982 Corner References Recovered;

R. Maple	10"	S16°E	65.25 feet
Sugar	8"	S36°W	57.65 feet
Steel Sign Post		North	0.82 feet

5. Southwest Section Corner

In 1978, Jean Resvick restored the corner position from acceptance of a 6"x6" scribed post in concurrence with original bearing tree evidence.

1978 Corner References Recovered;

Balsam	9"	N83°E	12.63 feet
Spruce	7"	N27°W	15.56 feet
High Point on Rock		S53°W	30.90 feet

Both of the above bearing trees were cut down for the Aerial Photo Project and the following new bearing trees were made.

Maple	7"	N86°E	62.64 feet
Balsam	6"	N26°W	45.35 feet
Steel Sign Post		NE	±3.00 feet

6. West Quarter Corner

The corner position is restored at proportionate distance and on line between the Southwest and Northwest Section Corners.

Corner References;

R. Maple	8"	N46°E	16.90 feet
R. Maple	8"	S30°E	13.05 feet
Steel Sign Post		NE	±1.00 feet

7. Northwest Section Corner

Corner position is restored from accepted evidence of George Melindy's survey of Section 18 which was done in 1928.

Corner References;

Tamarack	10"	S78°E	61.18 feet
Tamarack	16"	S33°E	68.70 feet
Steel Sign Post		North	±0.50 feet

8. North Quarter Corner

Corner position is restored from accepted evidence of George Melindy's survey of Section 18 which was done in 1928.

Corner References;

Spruce	4"	S12°E	10.58 feet
Balsam	7"	N79°W	37.73 feet
Steel Sign Post		NW	±1.00 feet

9. East Sixteenth Corner between Sections 19 and 30

In 1982, William B. Cochrane established the corner position at mid-point and on line between the Southeast Section Corner and the South Quarter Corner.

1982 Corner References Recovered;

Maple	9"	N34°E	47.14 feet
Maple	7"	N89°E	67.39 feet
Steel Sign Post		West	+1.30 feet

10. West Sixteenth Corner between Sections 19 and 30

In 1982, William B. Cochrane established the corner position at proportionate distance and on line between the Southwest Section Corner and the South Quarter Corner.

1982 Corner References Recovered;

B. Cherry	10"	S78°E	56.81 feet
Balsam	11"	S82°W	37.66 feet
Steel Sign Post		SE	±1.60 feet

Stock No. 26273

T39N R14E - SECTION 19

page 4 of 5

CORNERS ESTABLISHED1. South Sixteenth Corner between Sections 19 and 20

Corner position is established at mid-point and on line between the Southeast Section Corner and the East Quarter Corner.

Corner References;

S. Maple	7"	S84°W	8.11 feet
S. Maple	9"	N25°W	6.86 feet
Steel Sign Post		N45°E	0.87 feet

2. South Sixteenth Corner between Sections 19 and 24, Ranges 13 and 14 East

Corner position is established at mid-point and on line between the Southwest Section Corner and the West Quarter Corner.

Corner References;

Cedar	7"	N 8°E	15.42 feet
Cedar	8"	N87°W	17.00 feet
Steel Sign Post		NE	±1.00 feet

3. North Sixteenth Corner between Sections 19 and 20

Corner position is established at mid-point and on line between the Northeast Section Corner and the East Quarter Corner.

Corner References;

Y. Birch	13"	N60°E	10.09 feet
B. Ash	12"	S17°E	11.83 feet
Steel Sign Post		SE	±1.00 feet

4. East Sixteenth Corner between Sections 18 and 19

Corner position is established at mid-point and on line between the Northeast Section Corner and the North Quarter Corner.

Corner References;

Maple	7"	N49°E	31.70 feet
Maple	10"	N40°W	9.49 feet
Steel Sign Post		NW	±1.00 feet

5. Northeast Sixteenth Corner

Corner position is established at the intersection of straight lines between opposing Sixteenth Corner positions on the perimeter of the Northeast Quarter of the Section.

Corner References;

Maple	6"	S52°W	26.64 feet
Maple	11"	N54°W	5.75 feet
Steel Sign Post		South	±1.00 feet

Stock No. 26273

T39N R14E - SECTION 19

page 5 of 5

SURVEYOR'S AFFIDAVIT

State of Wisconsin)
County of Forest) ss

I, William B. Cochrane, Land Surveyor, U.S. Forest Service, and a Registered Land Surveyor in the State of Wisconsin, hereby certify that I have surveyed and sub-divided Section 19, Township 39 North, Range 14 East, Fourth Principal Meridian, State of Wisconsin.

The plat map and survey notes herewith are a correct representation of the land surveyed and sub-divided. I have surveyed and sub-divided said section in accordance with the rules for the Survey of Public Lands and the Statutes of the State of Wisconsin.



William B. Cochrane

Land Surveyor, U.S. Forest Service
R.L.S. State of Wisconsin
Certificate #S-1107

Survey requested by;

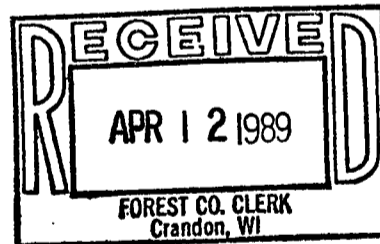
Edward [Signature]

3-22-89

District Ranger

Date

Date of Survey: 1988



Dora C. James